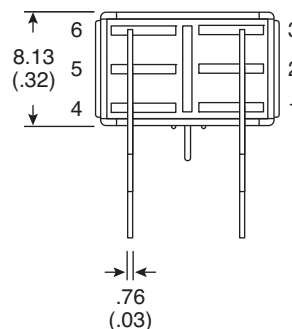
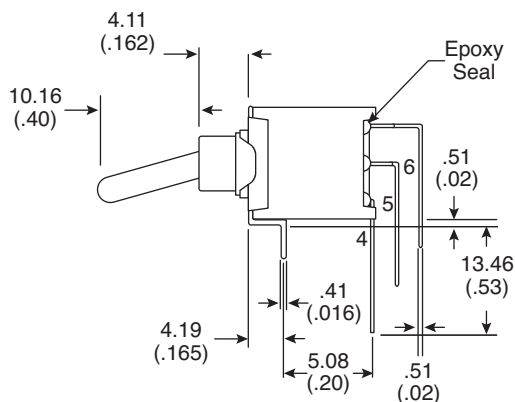
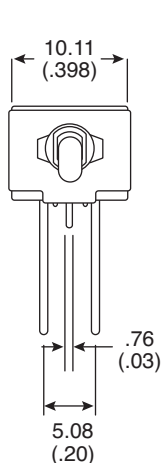
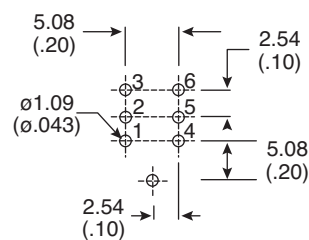


## Dimensions: mm (in)



## Switch Function

POS.1	POS.2
ON	ON
2-3,5-6	2-1,5-4



## P.C. Mounting

## Electrical Specifications:

- Contact Resistance: 20mΩ max. initial @ 2-4VDC 100mA
- Insulation Resistance: 1,000MΩ min.
- Dielectric Strength: 1,000 V RMS@ sea level.
- Rating:
  - 1A/250 VAC
  - 3A/120 VAC or 28 VDC

## Mechanical Specifications:

- Operating Temperature: -30° C to +85° C.
- Mechanical Life: 50,000 make-and-break cycles

## Soldering Process:

- Manual Soldering: Use soldering iron of 30 watts, controlled at 350°C approximately 5 sec. while applying solder.
- Wave Soldering: Recommended Soldering Temperature: 260±5°C  
Duration of Solder Immersion: 5±1sec. (PCB is 1.6mm in thickness)

## Note:

- RoHS compliant by exemption.

**Toggle Switch**  
108-2AD1T1718-EVX

**Mountain**  
**Switch**

# Mouser Electronics

Authorized Distributor

Click to View Pricing, Inventory, Delivery & Lifecycle Information:

[Mountain Switch:](#)

[108-2AD1T1718-EVX](#)