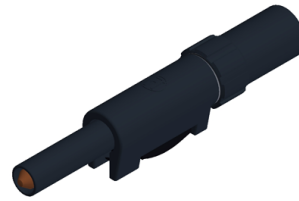






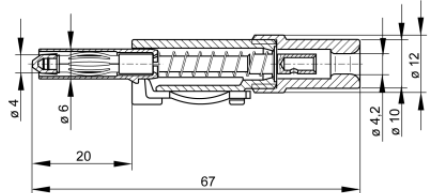


Plugs

SLS 10 B



4 mm sliding sleeve system

Product	SLS 10 B
description	Touch protected plug to assemble with solder connection for cables up to 2.5mm ² . Insulated by latching and sprung insulating sleeve, to be released by pressure on the lateral locking spring. plug with contact spring, 4mm diameter.
operating instruction	BA414
article-no. / *colour	9318241xx <div style="display: flex; justify-content: space-around; align-items: center;"> <div style="text-align: center;"> 00 black</div> <div style="text-align: center;"> 01 red</div> <div style="text-align: center;"> 02 blue</div> <div style="text-align: center;"> 03 yellow</div> <div style="text-align: center;"> 04 green</div> <div style="text-align: center;"> 07 white</div> </div> <div style="text-align: right; margin-top: 5px;">Ni</div>
drawing	
technical data	
connection	solder connection
rated voltage ⁽¹⁾	30 VAC / 60 VDC
measurement cat. acc. to IEC 61010	O ⁽³⁾
rated current ⁽¹⁾ (consider derating curve)	30 A
material plug	brass, nickel plated
housing material	POM
temperature range acc. To IEC61010 ⁽²⁾	-25 °C to +80 °C
standard	IEC 61010

⁽¹⁾ for normal environmental conditions -5°C to +40°C

⁽²⁾ contact the manufacturer for applications at deviating temperature ranges

⁽³⁾ without rated measurement category, for other circuits that are not directly connected to mains

stand: 07.05.2019