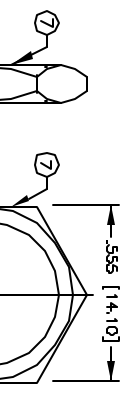
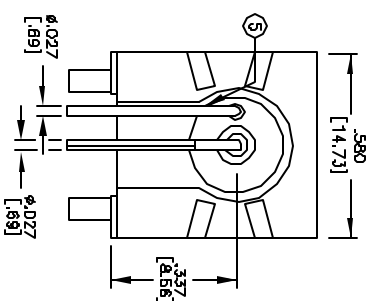
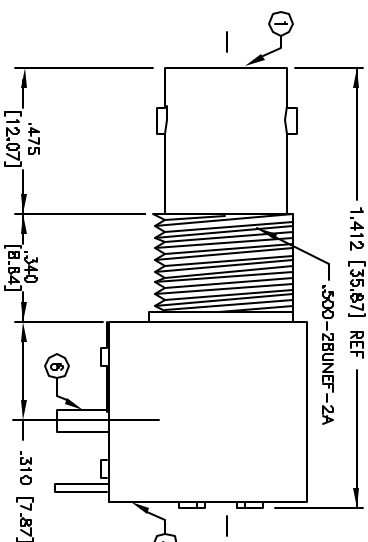
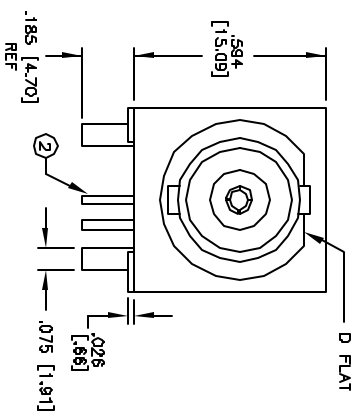


ALL RIGHTS RESERVED. NO PORTION OF THIS PUBLICATION, WHETHER IN WHOLE OR IN PART CAN BE REPRODUCED WITHOUT THE EXPRESS WRITTEN CONSENT OF SPC TECHNOLOGY.

REVISIONS				DOC. NO. SPC-FD05 + Effective 12/21/98 + DCP No. 480			
DCP #	REV	DESCRIPTION	DRAWN	DATE	CHECKD	DATE	APPRVD
129	A	RELEASED	DJC	2/25/98	JC	7/15/98	JWM
987	B	Was two pages	JWM	6/15/01	JC	6/15/01	JC

ALL DIMENSIONS ARE REFERENCE ONLY

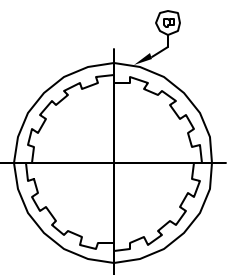
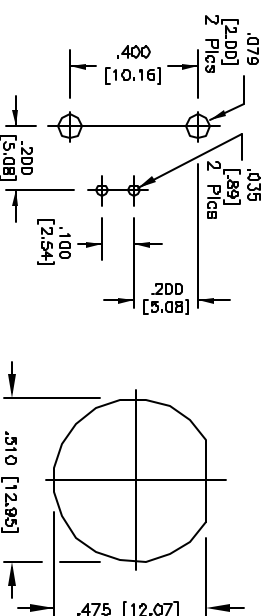


### SPECIFICATIONS:

IMPEDANCE: 50 OHMS  
WORKING VOLTAGE: 500 VRMS @ SEA LEVEL  
FREQUENCY RANGE: 0-1 GHz  
\* CONTACT GOLD PLATING AT BNC END - TIN/LEAD  
PLATING AT CIRCUIT BOARD END

ITEM	DESCRIPTION	QTY	MATERIAL	FINISH
8	LOCK WASHER [LKW-505]	1	PHOS BRONZE	NICKEL
7	NUT [HEX-500]	1	BRASS	NICKEL
6	MOUNTING POSTS	2	BRASS	NICKEL
5	GROUNDING TERMINAL	1	COPPER	TIN
4	HOUSING	1	PBT	WHITE
3	DIELECTRIC	1	POLYPROPYLENE	NONE
2	CONTACT	1	BRASS	*
1	BODY	1	ZINC	NICKEL

SUGGESTED MOUNTING CONFIGURATION



SPC TECHNOLOGY

DISCLAIMER  
ALL DIMENSIONS AND TECHNICAL INFORMATION CONTAINED HEREIN ARE BASED UPON INFORMATION AND/OR TESTS WE BELIEVE TO BE ACCURATE AND RELIABLE. SINCE CONDITIONS OF USE ARE BEYOND OUR CONTROL, THE USER SHALL DETERMINE THE SUITABILITY OF THE PRODUCT FOR THE INTENDED USE AND ASSUME ALL RISK AND LIABILITY WHATSOEVER IN CONNECTION THEREWITH.

UNLESS OTHERWISE SPECIFIED, DIMENSIONS ARE FOR REFERENCE PURPOSES ONLY.

DRAWN BY:	DATE:
Daniel Carey	2/25/98
CHECKED BY:	DATE:
JOHN COLE	7/15/98
APPROVED BY:	DATE:
Jeff McVicker	7/15/98

DRAWING TITLE:			
BNC Female right Angle PCB Mount			
SIZE	DWG. NO.	ELECTRONIC FILE	
A	1552	92N3398.dwg	
SCALE:	NTS	U.O.M.: INCHES [mm]	SHEET: 1 OF 1