

EMC Components

EMC Filters for AC Power Line

Inlet-socket Type

ZUB.U-22, ZUB.D-22 Series

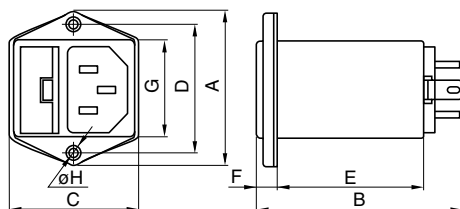
FEATURES

- Either single fuse filters(U type) or double fuse filters(D type).
- Internal fuse simplifies maintenance(Without spare fuse).
- Leakage current is maintained below 0.01mA.
- Uses Faston® #250 output terminals, simplifying handling and maintenance, and permitting soldering.

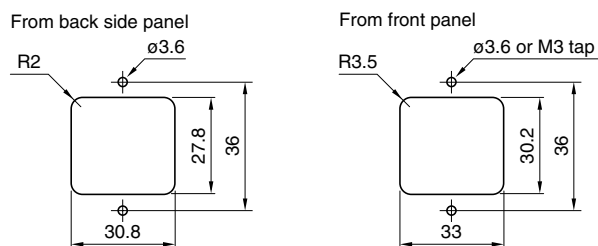
APPLICATIONS

Computer terminals, various types of office automation equipment, digital devices(ECRs, etc.), measurement equipment, medical equipment, etc.

SHAPES AND DIMENSIONS



Typical dimensions for installation



- Tighten the panel mounting M3 dia. bolt with the torque under 5.88X10⁻¹N • m.

Dimensions in mm								
Series	A	B	C	D	E	F	G	øH
ZUB-U-22	44	59	37	36	41	6	27	3.5
ZUB-D-22	44	68	37	36	41	15	27	3.5

- Case:metal, input terminal:inlet-socket(EN60320), output terminal: Faston® #250(t:0.8mm)

ELECTRICAL CHARACTERISTICS

Part No.	ZUB2203U-22	ZUB2206U-22	ZUB2210U-22
Rated voltage Eac (V)	250	250	250
Rated current (A)	3	6	10
Test voltage Eac (V) [Between terminal and ground terminal]	2000	2000	2000
Insulation resistance (MΩ)	100min.	100min.	100min.
[DC.500V, 1min/between terminal and ground terminal]			
Leakage current (mA) [250V • 60Hz]	0.01max.	0.01max.	0.01max.
DC resistance (mΩ)	150max.	100max.	70max.
Operating temperature range (°C)[Including self-temperature rise]	-25 to +85	-25 to +85	-25 to +85
With derating over(°C)	55	55	55
Temperature rise (°C)	30max.	30max.	30max.
Attenuation frequency range (MHz) [+5 to +35°C]	Differential mode Common mode	0.6 to 8[20dB] 0.4 to 4[20dB]	0.6 to 10[20dB] 0.8 to 4[20dB]
Weight (g)	71	71	71

Part No.	ZUB2203D-22	ZUB2206D-22	ZUB2210D-22
Rated voltage Eac (V)	250	250	250
Rated current (A)	3	6	10
Test voltage Eac (V) [Between terminal and ground terminal]	2000	2000	2000
Insulation resistance (MΩ)	100min.	100min.	100min.
[DC.500V, 1min/between terminal and ground terminal]			
Leakage current (mA) [250V • 60Hz]	0.01max.	0.01max.	0.01max.
DC resistance (mΩ)	150max.	100max.	70max.
Operating temperature range (°C)[Including self-temperature rise]	-25 to +85	-25 to +85	-25 to +85
With derating over(°C)	55	55	55
Temperature rise (°C)	30max.	30max.	30max.
Attenuation frequency range (MHz) [+5 to +35°C]	Differential mode Common mode	0.6 to 8[20dB] 0.4 to 4[20dB]	0.6 to 10[15dB] 1 to 20[10dB]
Weight (g)	76	76	76

- Faston® is a registered trademark of Tyco Electronics AMP Corp. Incorporated.

- All specifications are subject to change without notice.

EMC Components

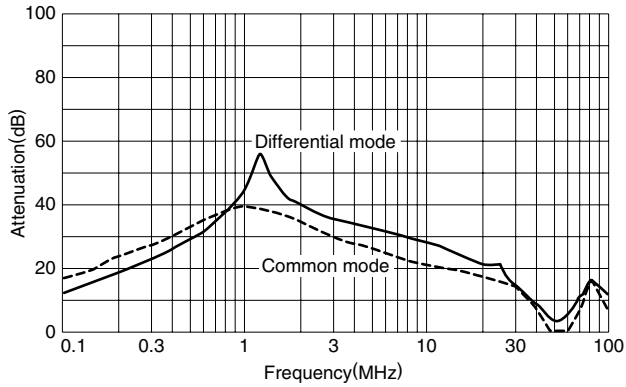
EMC Filters for AC Power Line Inlet-socket Type

ZUB.U-22, ZUB.D-22 Series

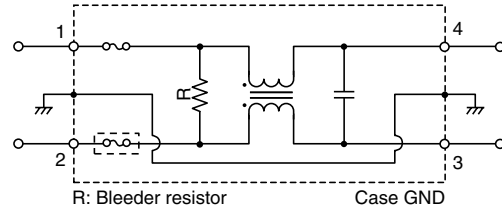
TYPICAL ELECTRICAL CHARACTERISTICS

ATTENUATION vs. FREQUENCY CHARACTERISTICS

ZUB2203U-22/D-22

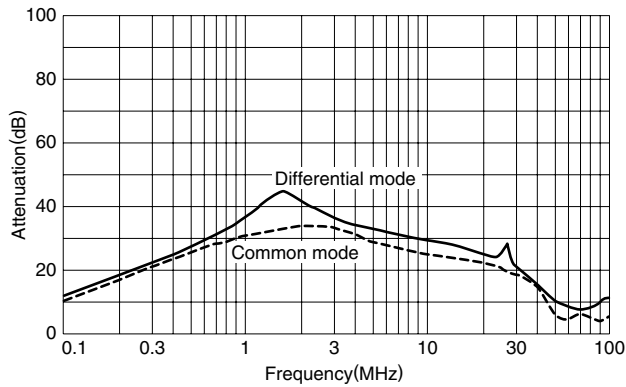


CIRCUIT DIAGRAM



- The U type lacks a fuse within the circuit region indicated by the dashed line.

ZUB2206U-22/D-22



ZUB2210U-22/D-22

