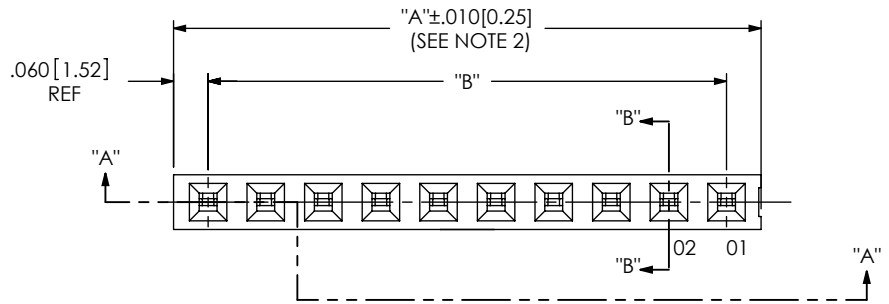


DO NOT
SCALE FROM
THIS PRINT

DESIGNED & DIMENSIONED
IN INCHES[MILLIMETERS]



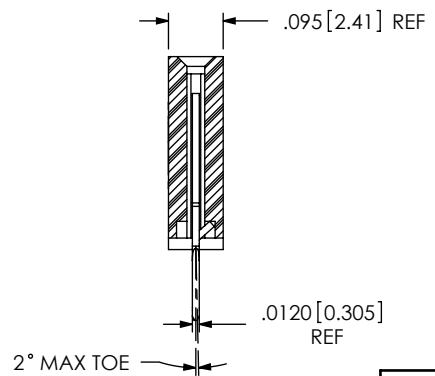
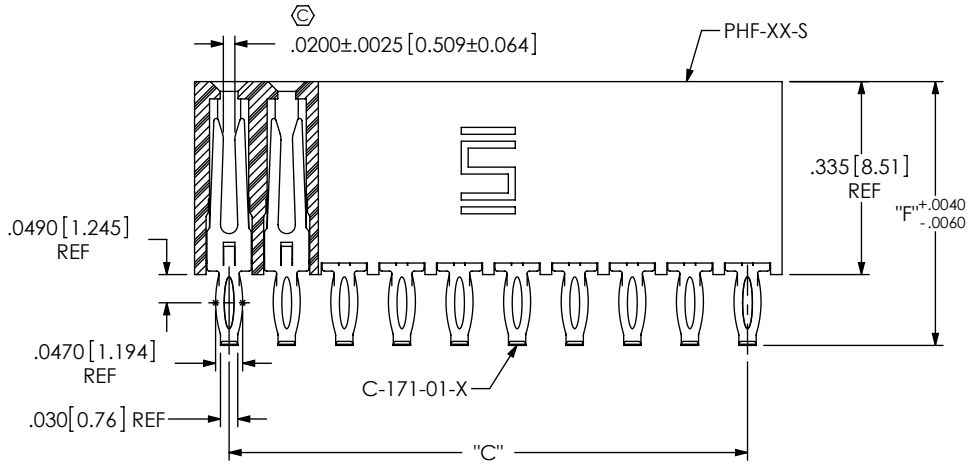
PHF-1XX-XX-X-X-XXX

No OF POSITIONS
-01 (SINGLE ROW ONLY)
-02 THRU -50
(PER ROW)
LEAD STYLE
-01: (USE C-171-01-X)
-02: (USE C-171-02-X)
-03: (USE C-171-03-X)
-04: (USE C-171-04-X)

POLARIZATION OPTION
-XXX INDICATES POSITION
(USE PK-06-N)

ROW SPECIFICATION
-S: SINGLE
-D: DOUBLE

PLATING SPECIFICATION
-S: SELECTIVE, .000030 GOLD
ON POST, TIN ON TAIL
-L: SELECTIVE, .000010 GOLD
ON POST, TIN ON TAIL



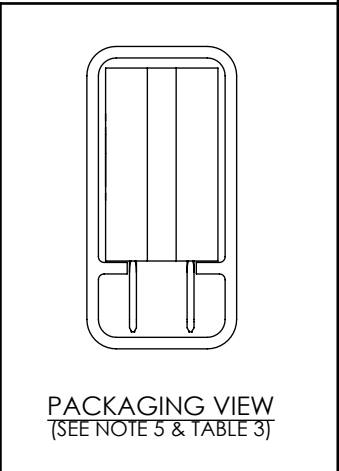
SECTION "A"- "A"

SECTION "B"- "B"

FIG 1
(PHF-1XX-01-X-S SHOWN)

TABLE 1		
LEAD STYLE	"E"	"F"
-01	N/A	.4580 [11.633]
-02	.4350 [11.049]	.5580 [14.173]
-03	.5350 [13.589]	.6580 [16.713]
-04	.6350 [16.129]	.7580 [19.253]

TABLE 3 - PACKAGING			
LEAD STYLE	ROW SPEC.	TUBE	PLUG
-01	-S	PT-1-24-01-24	TP-24
	-D	PT-1-24-01-22	TP-03
-02	-S	PT-1-24-01-46	TP-24
	-D	PT-1-24-06-29	TP-03
-03	-S	PT-1-24-10-03	TP-24
	-D	PT-1-24-07T-109	TP-29
-04	-S	PT-1-24-10-03	TP-24
	-D	PT-1-24-01-71	TP-03



PACKAGING VIEW
(SEE NOTE 5 & TABLE 3)

- NOTES:
1. Ⓢ REPRESENTS A CRITICAL DIMENSION.
 2. MAXIMUM CUT FLASH: .020 [0.51].
 3. MINIMUM CONTACT RETENTION: .5 LB PER PIN.
 4. PARTS MAY BE CUT TO POS. ONE POS LOST PER CUT.
 5. BULK PACKAGED TO BE USED FOR 4 POSITION AND BELOW, TUBE TO BE USED FOR 5 POSITION AND ABOVE.
 6. MAX ALLOWABLE BOW .002[0.05] INCH/INCH AFTER ASSEMBLY.
 7. PHEF BODY IS NOT TO BE MORE THAN +/- .01 [0.25] FROM PLANE SET BY PHF BODY.

UNLESS OTHERWISE SPECIFIED,
DIMENSIONS ARE IN
INCHES [MILLIMETERS].
TOLERANCES ARE:
DECIMALS ANGLES
.XX: ± .01 [.3] 2°
.XXX: ± .005 [.13]
.XXXX: ± .0020 [.051]

PROPRIETARY NOTE
THIS DOCUMENT CONTAINS INFORMATION
CONFIDENTIAL AND PROPRIETARY TO
SAMTEC, INC. AND SHALL NOT BE REPRODUCED
OR TRANSFERRED TO OTHER DOCUMENTS OR
DISCLOSED TO OTHERS OR USED FOR ANY
PURPOSE OTHER THAN THAT WHICH IT WAS
OBTAINED WITHOUT THE EXPRESSED WRITTEN
CONSENT OF SAMTEC, INC.

MATERIAL: DO NOT SCALE DRAWING SHEET SCALE: 3:1

INSULATOR: LCP, UL 94 VO
COLOR: BLACK
CONTACT: PHOS BRONZE

F:\DWG\MISC\MKTG\PHF-1XX-XX-X-X-XXX-MKT.SLDDRW

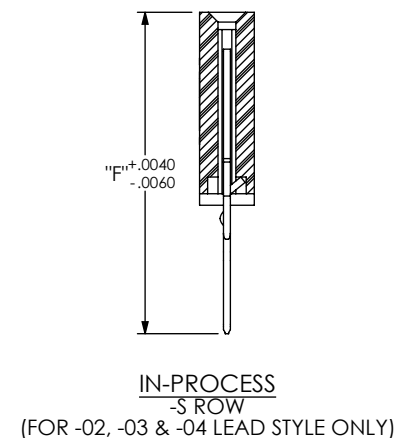
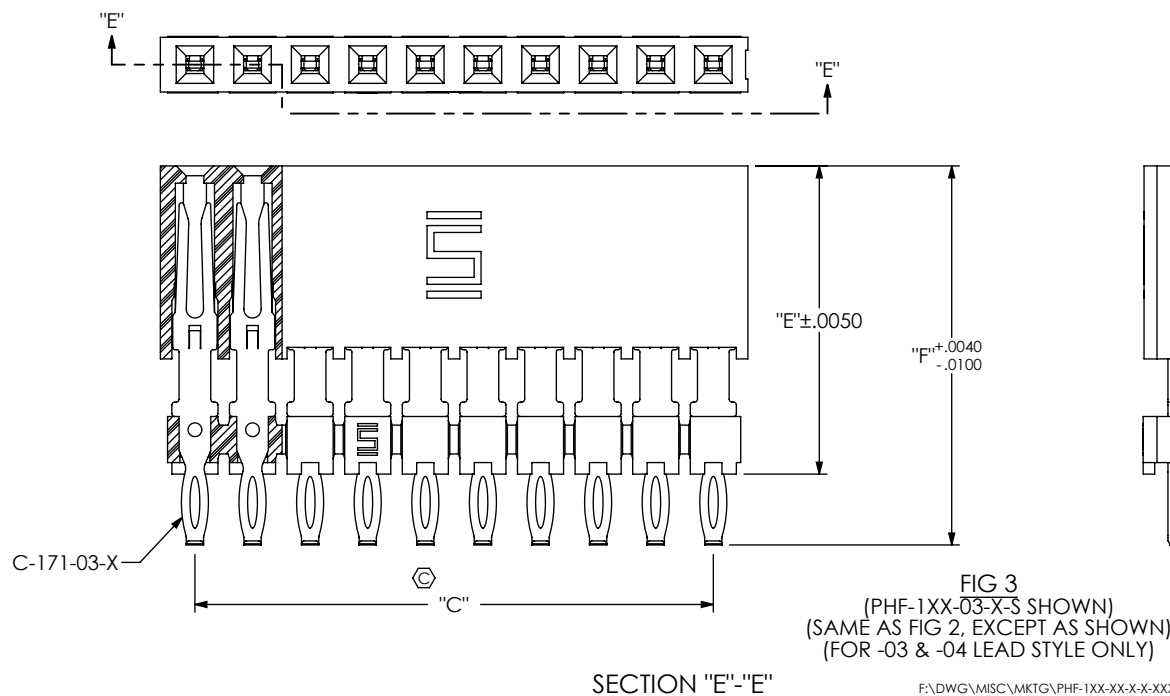
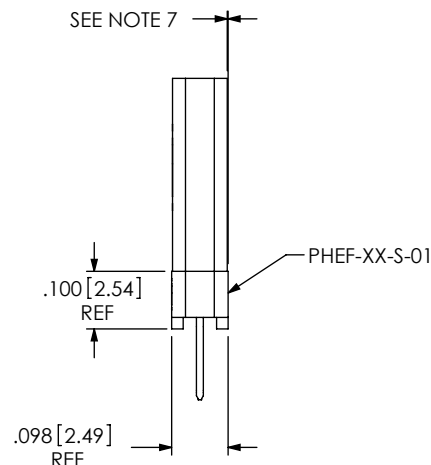
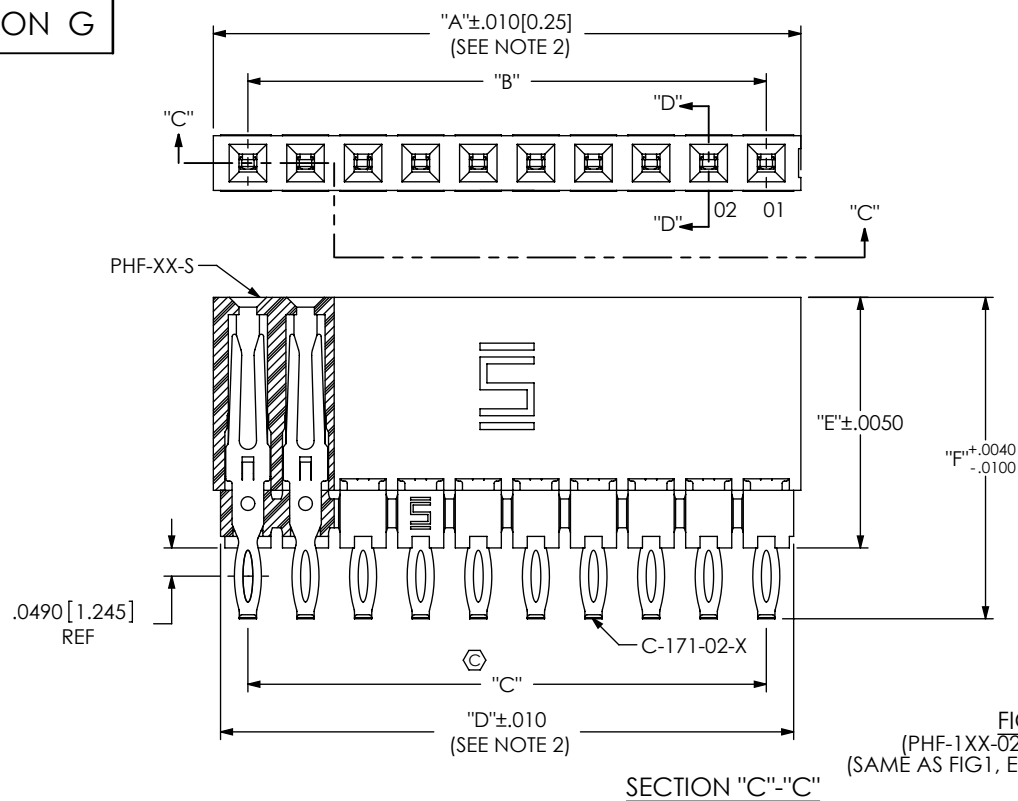


520 PARK EAST BLVD, NEW ALBANY, IN 47150
PHONE: 812-944-6733 FAX: 812-948-5047
e-Mail: info@SAMTEC.com code 55322

DESCRIPTION:
.100 PRESS FIT SOCKET ASSEMBLY

DWG. NO.
PHF-1XX-XX-X-X-XXX

BY: ROY LUO 9/3/2009 SHEET 1 OF 4



PROPRIETARY NOTE
THIS DOCUMENT CONTAINS INFORMATION
CONFIDENTIAL AND PROPRIETARY TO
SAMTEC, INC. AND SHALL NOT BE REPRODUCED
OR TRANSFERRED TO OTHER DOCUMENTS OR
DISCLOSED TO OTHERS OR USED FOR ANY
PURPOSE OTHER THAN THAT WHICH IT WAS
OBTAINED WITHOUT THE EXPRESSED WRITTEN
CONSENT OF SAMTEC, INC.

DO NOT SCALE DRAWING

SHEET SCALE: 3:1

samtec

520 PARK EAST BLVD, NEW ALBANY, IN 47150
PHONE: 812-944-6733 FAX: 812-948-5047
e-Mail: info@SAMTEC.com code 55322

DESCRIPTION:
.100 PRESS FIT SOCKET ASSEMBLY

DWG. NO.
PHF-1XX-XX-X-X-XXX

BY: ROY LUO 9/3/2009 SHEET 2 OF 4

TABLE 2

No. OF POS	"A"		"B"		"C"		"D"	
-01	0.120	[3.05]	N/A		N/A		0.095	[2.41]
-02	0.220	[5.59]	0.100	[2.54]	0.100	[2.54]	0.195	[4.95]
-03	0.320	[8.13]	0.200	[5.08]	0.200	[5.08]	0.295	[7.49]
-04	0.420	[10.67]	0.300	[7.62]	0.300	[7.62]	0.395	[10.03]
-05	0.520	[13.21]	0.400	[10.16]	0.400	[10.16]	0.495	[12.57]
-06	0.620	[15.75]	0.500	[12.70]	0.500	[12.70]	0.595	[15.11]
-07	0.720	[18.29]	0.600	[15.24]	0.600	[15.24]	0.695	[17.65]
-08	0.820	[20.83]	0.700	[17.78]	0.700	[17.78]	0.795	[20.19]
-09	0.920	[23.37]	0.800	[20.32]	0.800	[20.32]	0.895	[22.73]
-10	1.020	[25.91]	0.900	[22.86]	0.900	[22.86]	0.995	[25.27]
-11	1.120	[28.45]	1.000	[25.40]	1.000	[25.40]	1.095	[27.81]
-12	1.220	[30.99]	1.100	[27.94]	1.100	[27.94]	1.195	[30.35]
-13	1.320	[33.53]	1.200	[30.48]	1.200	[30.48]	1.295	[32.89]
-14	1.420	[36.07]	1.300	[33.02]	1.300	[33.02]	1.395	[35.43]
-15	1.520	[38.61]	1.400	[35.56]	1.400	[35.56]	1.495	[37.97]
-16	1.620	[41.15]	1.500	[38.10]	1.500	[38.10]	1.595	[40.51]
-17	1.720	[43.69]	1.600	[40.64]	1.600	[40.64]	1.695	[43.05]
-18	1.820	[46.23]	1.700	[43.18]	1.700	[43.18]	1.795	[45.59]
-19	1.920	[48.77]	1.800	[45.72]	1.800	[45.72]	1.895	[48.13]
-20	2.020	[51.31]	1.900	[48.26]	1.900	[48.26]	1.995	[50.67]
-21	2.120	[53.85]	2.000	[50.80]	2.000	[50.80]	2.095	[53.21]
-22	2.220	[56.39]	2.100	[53.34]	2.100	[53.34]	2.195	[55.75]
-23	2.320	[58.93]	2.200	[55.88]	2.200	[55.88]	2.295	[58.29]
-24	2.420	[61.47]	2.300	[58.42]	2.300	[58.42]	2.395	[60.83]
-25	2.520	[64.01]	2.400	[60.96]	2.400	[60.96]	2.495	[63.37]
-26	2.620	[66.55]	2.500	[63.50]	2.500	[63.50]	2.595	[65.91]
-27	2.720	[69.09]	2.600	[66.04]	2.600	[66.04]	2.695	[68.45]
-28	2.820	[71.63]	2.700	[68.58]	2.700	[68.58]	2.795	[70.99]
-29	2.920	[74.17]	2.800	[71.12]	2.800	[71.12]	2.895	[73.53]
-30	3.020	[76.71]	2.900	[73.66]	2.900	[73.66]	2.995	[76.07]
-31	3.120	[79.25]	3.000	[76.20]	3.000	[76.20]	3.095	[78.61]
-32	3.220	[81.79]	3.100	[78.74]	3.100	[78.74]	3.195	[81.15]
-33	3.320	[84.33]	3.200	[81.28]	3.200	[81.28]	3.295	[83.69]
-34	3.420	[86.87]	3.300	[83.82]	3.300	[83.82]	3.395	[86.23]
-35	3.520	[89.41]	3.400	[86.36]	3.400	[86.36]	3.495	[88.77]
-36	3.620	[91.95]	3.500	[88.90]	3.500	[88.90]	3.595	[91.31]
-37	3.720	[94.49]	3.600	[91.44]	3.600	[91.44]	3.695	[93.85]
-38	3.820	[97.03]	3.700	[93.98]	3.700	[93.98]	3.795	[96.39]
-39	3.920	[99.57]	3.800	[96.52]	3.800	[96.52]	3.895	[98.93]
-40	4.020	[102.11]	3.900	[99.06]	3.900	[99.06]	3.995	[101.47]
-41	4.120	[104.65]	4.000	[101.60]	4.000	[101.60]	4.095	[104.01]
-42	4.220	[107.19]	4.100	[104.14]	4.100	[104.14]	4.195	[106.55]
-43	4.320	[109.73]	4.200	[106.68]	4.200	[106.68]	4.295	[109.09]
-44	4.420	[112.27]	4.300	[109.22]	4.300	[109.22]	4.395	[111.63]
-45	4.520	[114.81]	4.400	[111.76]	4.400	[111.76]	4.495	[114.17]
-46	4.620	[117.35]	4.500	[114.30]	4.500	[114.30]	4.595	[116.71]
-47	4.720	[119.89]	4.600	[116.84]	4.600	[116.84]	4.695	[119.25]
-48	4.820	[122.43]	4.700	[119.38]	4.700	[119.38]	4.795	[121.79]
-49	4.920	[124.97]	4.800	[121.92]	4.800	[121.92]	4.895	[124.33]
-50	5.020	[127.51]	4.900	[124.46]	4.900	[124.46]	4.995	[126.87]

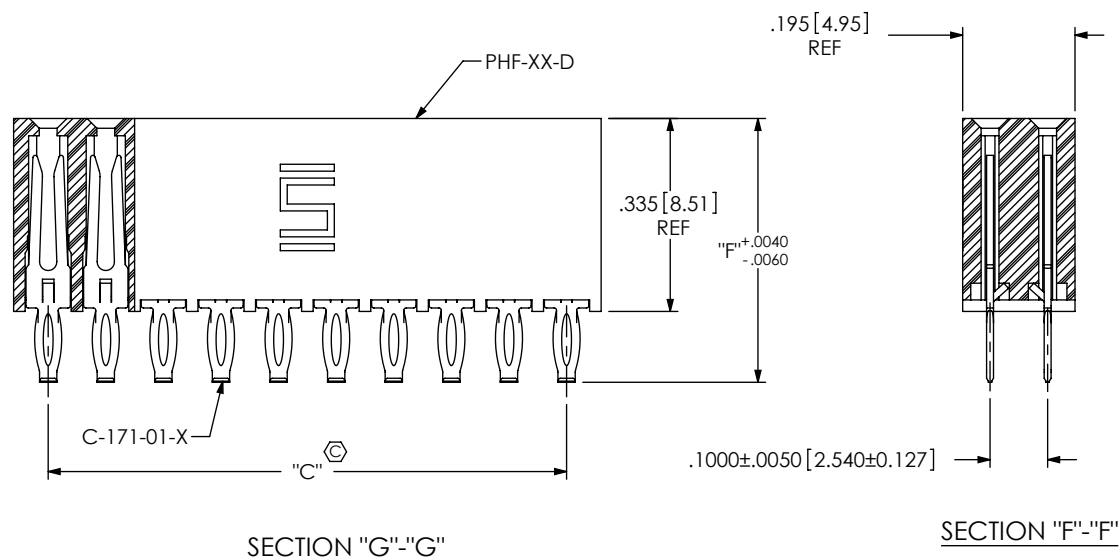
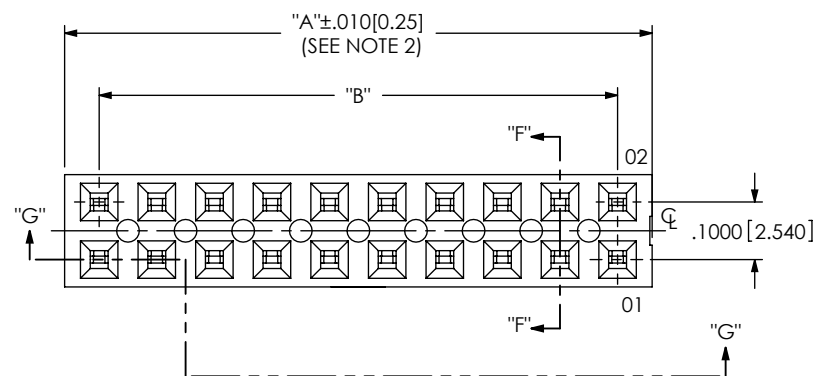


FIG 4
(PHF-1XX-0T-X-D SHOWN)
(SAME AS FIG 1, EXCEPT AS SHOWN)

PROPRIETARY NOTE

THIS DOCUMENT CONTAINS INFORMATION
CONFIDENTIAL AND PROPRIETARY TO
SAMTEC, INC. AND SHALL NOT BE REPRODUCED
OR TRANSFERRED TO OTHER DOCUMENTS OR
DISCLOSED TO OTHERS OR USED FOR ANY
PURPOSE OTHER THAN THAT WHICH IT WAS
OBTAINED WITHOUT THE EXPRESSED WRITTEN
CONSENT OF SAMTEC, INC.

DO NOT SCALE DRAWING

SHEET SCALE: 3:1

samtec

520 PARK EAST BLVD, NEW ALBANY, IN 47150
PHONE: 812-944-6733 FAX: 812-948-5047
e-Mail: info@SAMTEC.com code 55322

DESCRIPTION:

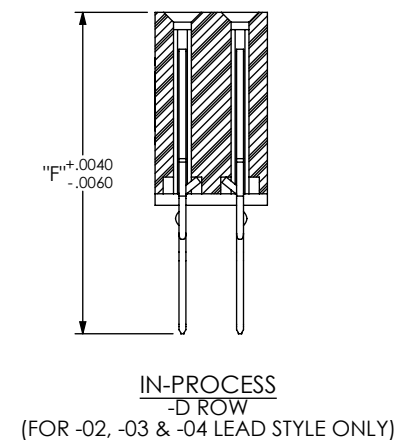
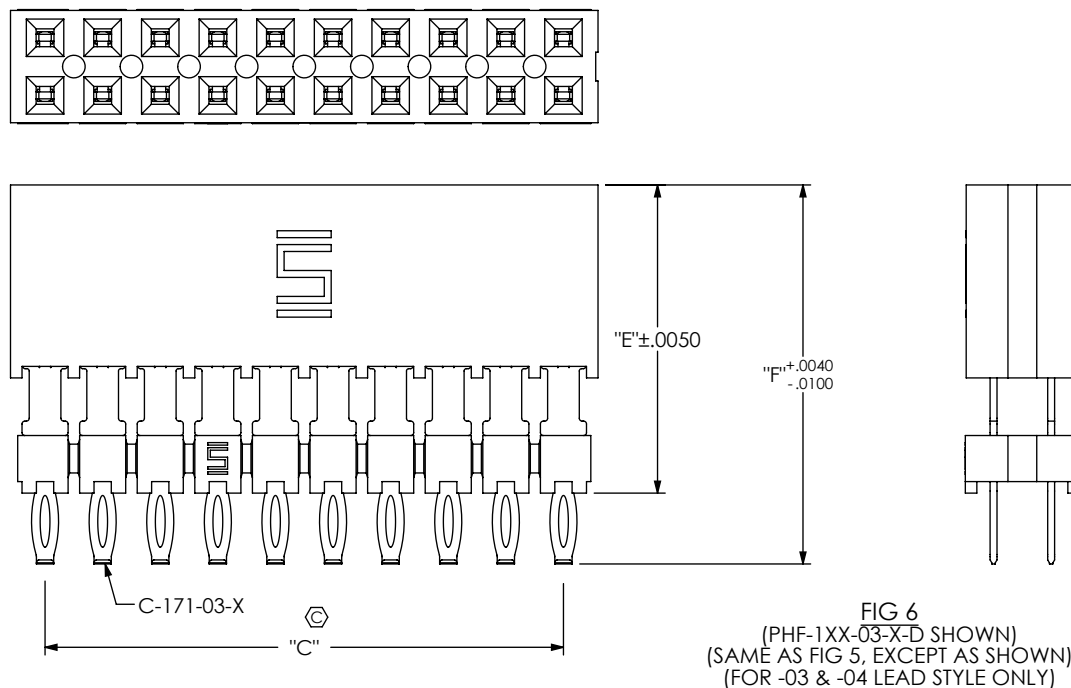
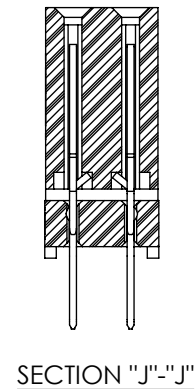
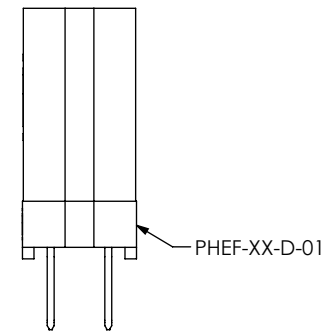
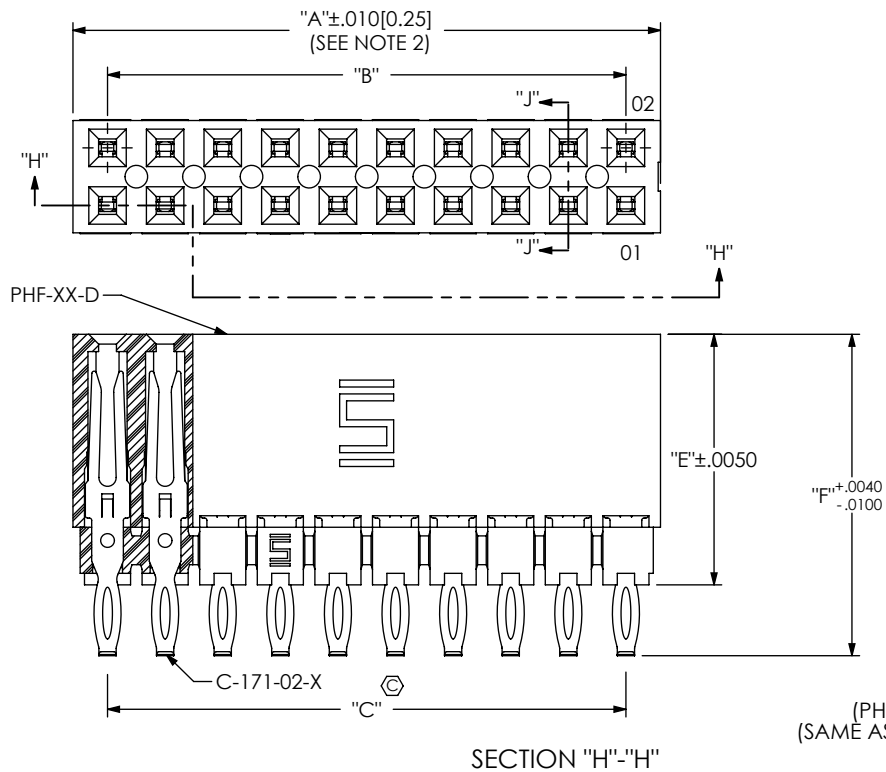
.100 PRESS FIT SOCKET ASSEMBLY

DWG. NO.

PHF-1XX-XX-X-X-XXX

BY: ROY LUO 9/3/2009

SHEET 3 OF 4



PROPRIETARY NOTE
THIS DOCUMENT CONTAINS INFORMATION
CONFIDENTIAL AND PROPRIETARY TO
SAMTEC, INC. AND SHALL NOT BE REPRODUCED
OR TRANSFERRED TO OTHER DOCUMENTS OR
DISCLOSED TO OTHERS OR USED FOR ANY
PURPOSE OTHER THAN THAT WHICH IT WAS
OBTAINED WITHOUT THE EXPRESSED WRITTEN
CONSENT OF SAMTEC, INC.

DO NOT SCALE DRAWING

SHEET SCALE: 3:1

samtec

520 PARK EAST BLVD, NEW ALBANY, IN 47150
PHONE: 812-944-6733 FAX: 812-948-5047
e-Mail: info@SAMTEC.com code 55322

DESCRIPTION:
.100 PRESS FIT SOCKET ASSEMBLY

DWG. NO.
PHF-1XX-XX-X-X-XXX

BY: ROY LUO 9/3/2009 SHEET 4 OF 4