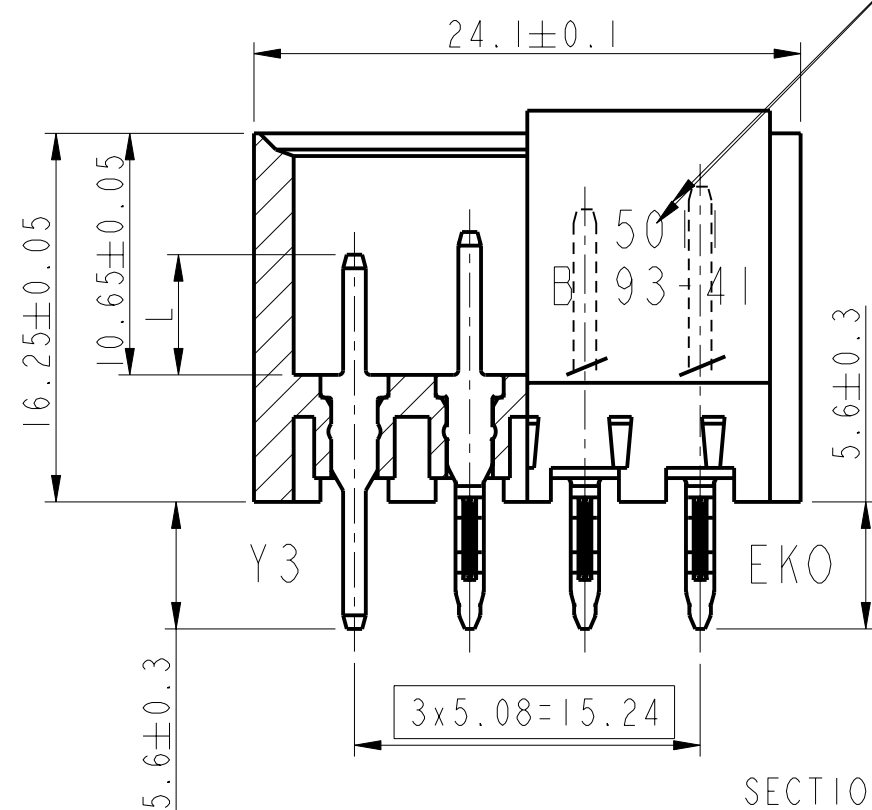
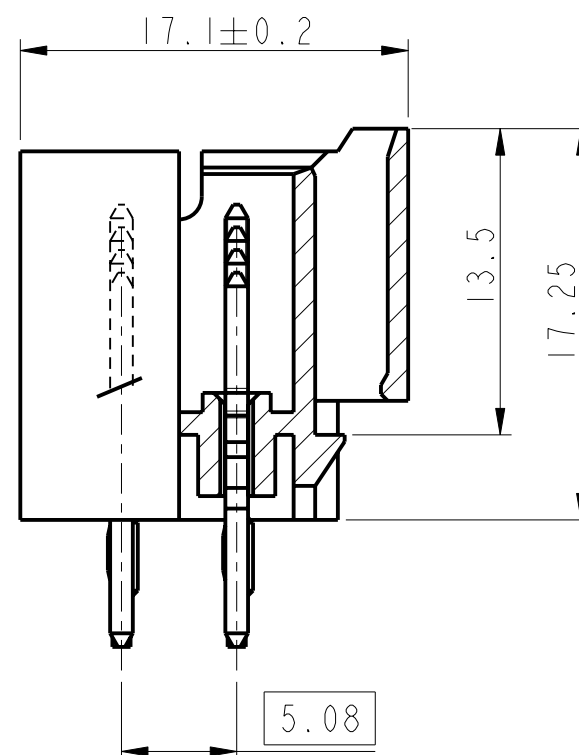


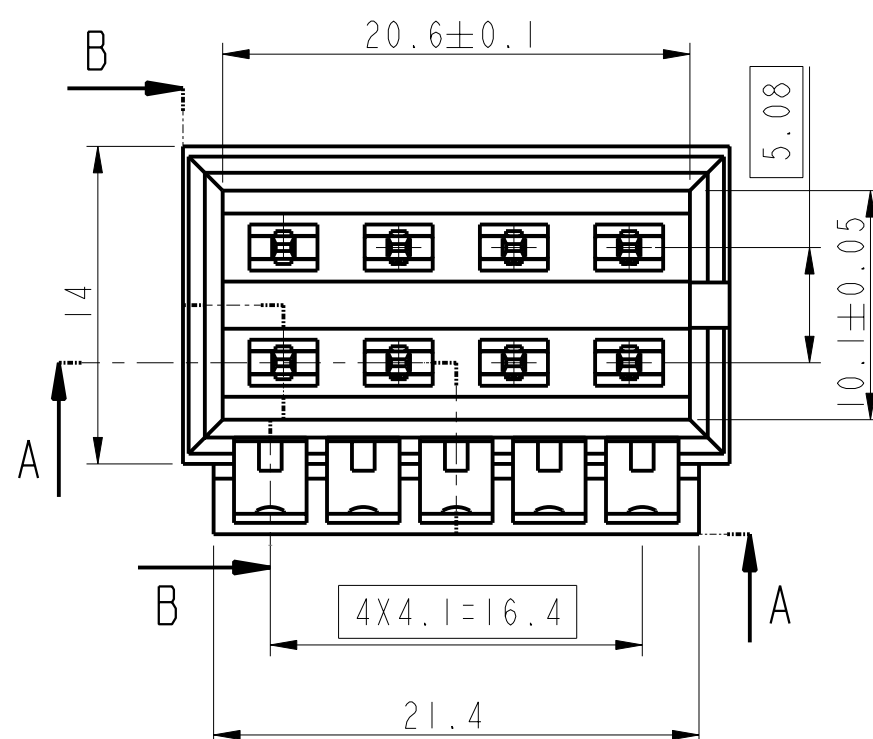
Marquage st codification commercial  
Marking according to commercial codification



SECTION A-A  
SCALE 3:1



SECTION B-B



General Data  
- In accordance with DGN08939-J and DIN 41612  
- Ends: - Pressfit for 1.37/1.54mm holes in PCB with thickness 2.4-3.2mm  
- straight pins for 1.6 to 1.8mm holes in PCB  
- Special breaking contact implantation refer drawing VJW11981 (Consult us)  
- Removable locating pins 50IIP

#### Technical Data:

##### Electrical

1. Initial contact resistance <10mΩ
2. Insulation resistance after test >10<sup>3</sup>MΩ
3. Withstanding voltage: >1000Vrms mini  
measured between 1 contact and all others
4. Operating Voltage: 250Vac
5. Operating current: 15A at 20°C

##### Mechanical

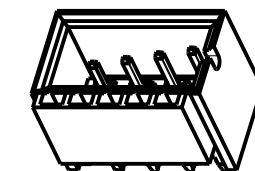
1. Insertion force (each contact) <4N
2. Withdrawal force (each contact) >0.625N
3. Endurance Class1 >500cycles  
Class2 >400cycles
4. Pressfit Insertion force (each contact) <250N
5. Pressfit withdrawal force (each contact) >45N

##### Material

Body: Fibreglass reinforced thermoplastic UL94 V0

Contacts: Phosphor bronze(EKO)-Brass(Y3)

Plating: Gold over Nickel on working area



SCALE 1:1

#### NOTE:RoHS INFORMATIONS

- The "LF" product meets European union Directives and other country regulations as described in GS-22-008.
- The product is not intended to be exposed to a manufacturing solder process.
- Packaging spec: see GS-14-920.

#### EUROPEN PROJECTION

litr	ecn no	dr	date
A	F03056	DLE	03.03.12
B	LS05-0063	NPM	05.07.27
C	LS05-0117	MRA	10/01/06
D	LS07-0249	HLE	2007/10/12
-	-	-	-
-	-	-	-
-	-	-	-

www.fciconnect.com		surface - <input checked="" type="checkbox"/> ISO 1302	tolerance std <input checked="" type="checkbox"/> ISO 406 <input checked="" type="checkbox"/> ISO 1101	projection	mm
TOLERANCES UNLESS OTHERWISE SPECIFIED					
Dr	D LEGRAND	03.03.12	ANGULAR	size A3	Scale 3:1
Eng	F TISSERAND	03.03.12	LINEAR	ECN LS07-0249	
Chr	JF NOTTEAU	03.03.12	0° ±2°	Spec ref	
Appr	F TI	03.03.12	Product family	DIN	
FCi		POWER BASE		dwg no VJW11977	Rev. D
		50IIE68EKO.4- VXXI4692		CUSTOMER	sheet 1 of 2
		catalog no			

1

2

3

4

A

B

C

D

A

B

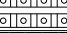
C

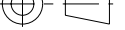


D



Copyright FCI.

Codification LF commerciale. Modèles standard/ Catalogue numbers for ordering. Standard items

Nb de contacts <i>Nr of contacts</i>	Equipement <i>Arrangement</i>	Cote 'L'(mm) <i>'L' Dimension(mm)</i>	Protection zone contact <i>Plating of contact area</i>			Protection zone raccordement <i>Plating of end area</i>		Code du connecteur <i>Connectors number</i>
8		L=5.3 L=6.3 L=7.3 L=8.3 L=9.3	1-LF	Norme HE 1202	DIN Class 2	3-LF	Sn sur nickel (Y3 standard) <i>Lead-Free over Nickel(Standard plating Y3)</i>	5011E68EK0.4LF
			2-LF	Norme HE 1203	DIN Class 1	4-LF	Nickelé (CIF standard) <i>Nickel (Standard Plating prssfit)</i>	
Autres équipements remplacer- par code implantation(Nous consuter) <i>Other arrangements:replace by implantation code (Consult us)</i>			Remplacer: par code protection <i>Replace : by plating code</i>			Autres protections Nous consulter <i>Other plating consult us</i>		

www.fciconnect.com			surface - <input checked="" type="checkbox"/>		tolerance std		projection 	mm 
			ISO 1302		ISO 406 ISO 1101			
TOLERANCES UNLESS OTHERWISE SPECIFIED								
Dr	D LEGRAND	03.03.12	ANGULAR	LINEAR	0.X	±0.3	size A3	Scale 3:1
Eng	F TISSERAND	03.03.12			0.XX	±0.1		
Chr	JF NOTTEAU	03.03.12	0° ±2°		0.XXX	±0.05		
Appr	F TI	03.03.12	Product family			DIN	Spec ref ECN LS07-0249	
		title POWER BASE 5011E68EK0.4- VXXI4692	dwg no VJWI1977				Rev. D	
		catalog no		-	CUSTOMER		sheet 2 of 2	

1

2

3