

Customer Information Sheet

DRAWING No.: M80-820XXXX

SHEET 2 OF 2

IF IN DOUBT - ASK

©

NOT TO SCALE

THIRD ANGLE PROJECTION

ALL DIMENSIONS IN mm

ORDER CODE:

M80-820XXXXTOTAL No. OF WAYS
02-07, 17, 22FINISH
05 - GOLD
22 - SELECTIVE GOLD

NOTES:

- 2-OFF STRAIN RELIEF STRAPS M80-0030006
CAN BE ORDERED SEPARATELY IF REQUIRED.

SPECIFICATIONS:

MATERIAL:

MOULDING = GLASS-FILLED POLYESTER UL94V-0, BLACK

CONTACTS = PHOSPHOR BRONZE

LATCH = BERYLLIUM COPPER

FINISH:

CONTACTS:

05 = 0.75µ GOLD

22 = 0.75µ GOLD ON CONTACT AREA, 3.0µ 90/10 TIN/LEAD ON TAILS

LATCH = 1.25µ NICKEL

ELECTRICAL:

CURRENT RATING AT 25°C = 3.0A MAX

CURRENT RATING AT 85°C = 2.2A MAX

WORKING VOLTAGE = 120V AC/DC

VOLTAGE PROOF = 360V AC/DC

CONTACT RESISTANCE (INITIAL) = 20 mΩ MAX

CONTACT RESISTANCE (AFTER CONDITIONING) = 25 mΩ MAX

INSULATION RESISTANCE (INITIAL) = 1,000 MΩ MIN

INSULATION RESISTANCE (AFTER CONDITIONING) = 100 MΩ MIN

MECHANICAL:

DURABILITY = 500 OPERATIONS

ENVIRONMENTAL:

TEMPERATURE RANGE = -55°C TO +125°C

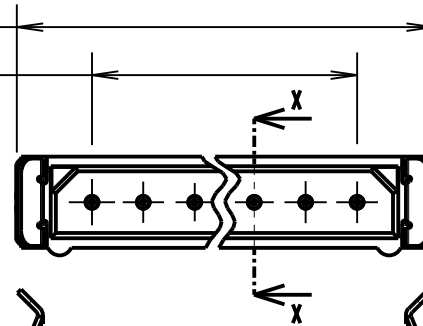
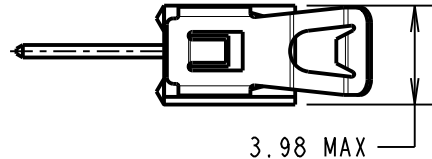
PACKING:

TUBE

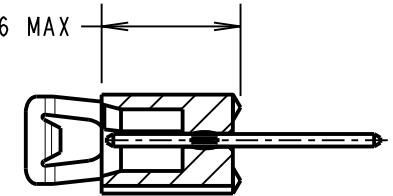
FOR COMPLETE SPECIFICATION, SEE COMPONENT
SPECIFICATION C005XX (LATEST ISSUE)

2.00 x No. OF WAYS + 4.10 MAX

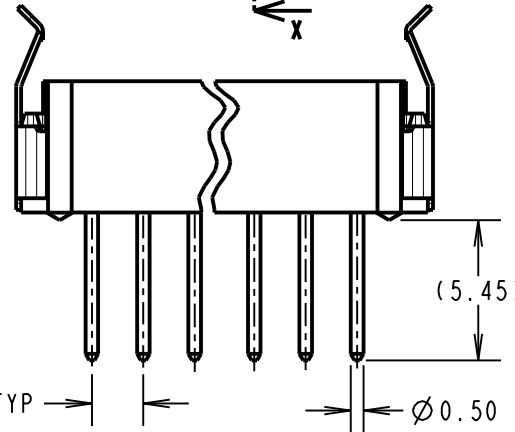
2.00 x No. OF PITCHES



5.56 MAX



SECTION X-X



2.00 x No. OF PITCHES

2.25 TYP

Ø0.90 MIN TYP
STRAIN RELIEF STRAP HOLES
(OPTIONAL)

RECOMMENDED PCB LAYOUT

Ø0.80 MAX TYP

2.375 TYP

4.75

2.00 TYP

BRITISH STANDARD ORDER CODE:

B5743-1XX-M-T-XTOTAL No. OF WAYS
02-07, 17, 22

FINISH:

A = GOLD

T = SELECTIVE GOLD

| | | | |
|------------------------|------|----------|--------|
| SM | 5 | 07.06.11 | 10832 |
| NAME | ISS. | DATE | C/NOTE |
| APPROVED: S. MCCULLAGH | | | |
| CHECKED: M. G. PLESTED | | | |
| DRAWN: A. LIOTTA | | | |
| CUSTOMER REF.: | | | |
| ASSEMBLY DRG: | | | |

HARWIN

| | | |
|--|--|--|
| HARWIN USA TEL: 603 893 5376 FAX: 603 893 5396 mis@harwin.com | HARWIN Europe (UK) TEL: 023 9231 4545 FAX: 023 9231 4590 mis@harwin.co.uk | HARWIN Asia TEL: +65 6 779 4909 FAX: +65 6 779 3868 mis@harwin.com.sg |
|--|--|--|

THIS DRAWING AND ANY
INFORMATION OR DESCRIPTIVE
MATTER SET OUT HEREON ARE
CONFIDENTIAL AND COPYRIGHT
PROPERTY OF THE HARWIN
GROUP AND MUST NOT BE
DISCLOSED, LOANED, COPIED
OR USED FOR MANUFACTURING,
TENDERING OR FOR ANY
OTHER PURPOSE WITHOUT
THEIR WRITTEN PERMISSION.

TOLERANCES

X. = ±1mm
X.X = ±0.25mm
X.XX = ±0.10mm
X.XXX = ±0.01mm

ANGLES = ±5°

UNLESS STATED

MATERIAL:

SEE ABOVE

FINISH:

S/AREA:

mm²TITLE: DATAMATE 2mm PITCH
VERTICAL PC TAIL SIL PLUG
ASSEMBLY - LATCHED

DRAWING NUMBER:

M80-820XXXXSHT
2
OF
2

Mouser Electronics

Authorized Distributor

Click to View Pricing, Inventory, Delivery & Lifecycle Information:

Harwin:

[B5743-103-M-T-A](#) [B5743-103-M-T-T](#)