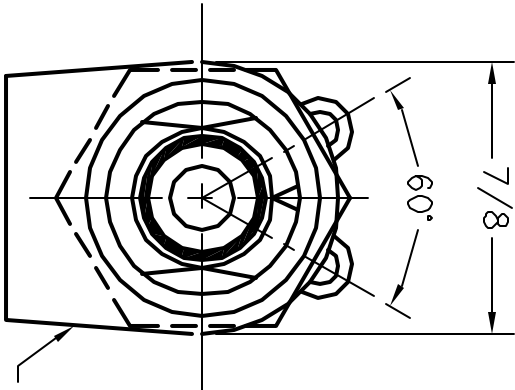




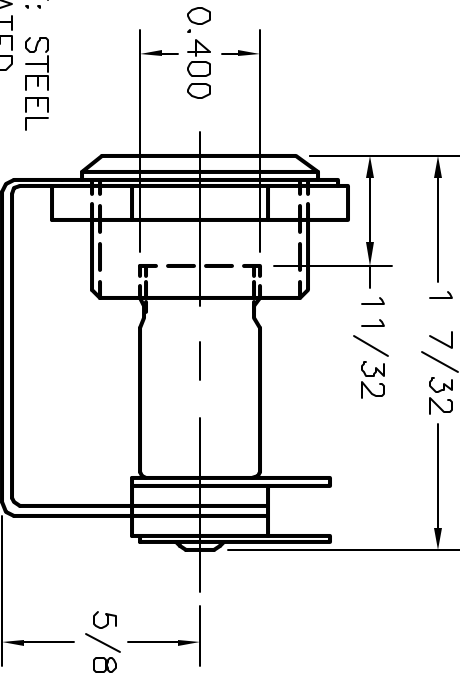
**RoHS
Compliant**

SPECIFICATIONS

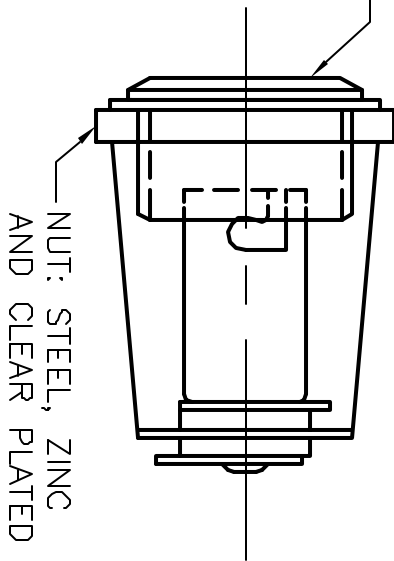
1. REQUIRES 11/16" MOUNTING HOLE.
2. PANEL THICKNESS: 0 to 1/4"
3. LAMP REPLACEMENT FROM FRONT OF PANEL.



SHELL & BRACKET: STEEL
ZINC & CLEAR PLATED



BUSHING: BRASS
NICKEL PLATED



NUT: STEEL, ZINC
AND CLEAR PLATED

REVISIONS				DOC. NO. SPC-F005, Total Pages: 2			
DCP #	REV	DESCRIPTION	DRAWN	DATE	CHECKD	DATE	APPRVD
1946	A	RELEASED	SA	1/10/07	JNM	3/19/07	TL

DISCLAIMER:
ALL STATEMENTS AND TECHNICAL INFORMATION CONTAINED HEREIN ARE BASED UPON INFORMATION AND/OR TESTS WE BELIEVE TO BE ACCURATE AND RELIABLE. SINCE CONDITIONS OF USE ARE BEYOND OUR CONTROL, THE USER SHALL DETERMINE THE SUITABILITY OF THE PRODUCT FOR THE INTENDED USE AND ASSUME ALL RISK AND LIABILITY WHATSOEVER IN CONNECTION THEREWITH.



SPC TECHNOLOGY

Tolerances Unless
Otherwise Specified
Fractional $\pm 1/64$
Angular $\pm 1^\circ$
Decimal .XXX $\pm .005$

DRAWN BY:	DATE:
SAMI ALNADI	1/10/07
CHECKED BY:	DATE:
JEFF MCVICKER	3/19/07
APPROVED BY:	DATE:
THOMAS LEE	3/19/07

DRAWING TITLE:
T 3-1/4 MINIATURE BAYONET LAMPHOLDER

SIZE	DWG. NO.	ELECTRONIC FILE
A	SPC21780	16M1271.DWG
SCALE:	NTS	U.O.M.: INCHES [mm]

REV
A