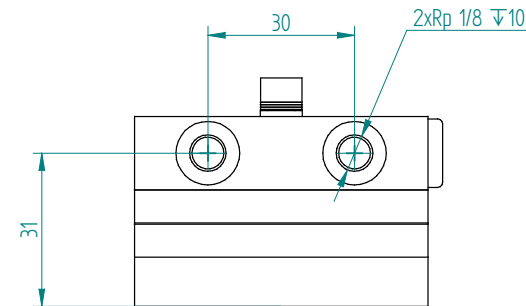


Specification (Ta=32°C)	Code	Description
Heat transfer, cold side:	D	Direct
Heat transfer, warm side:	L	Liquid
Cascade:	-	
Cooling power: [W]	120	Calculated 135 W at dT=0°C. Tolerance: ±10%.
Voltage, nominal: [VDC]	24	24 VDC.
TEM Voltage: [VDC]		Nominal: 24 VDC, Max: 30 VDC.
TEM Current: [A]		Nominal: 4.7 A, Initial: 5.2 A. All at dT=0°C. Tolerance: ±10%.
Fan(s), cold side:	0	None.
Fan(s), warm side:	0	None.
Temperature controller, sensor:	0	None.
Temperature control settings, trim options:	0	-
Additional controller information		
Temperature control position:	0	-
Options:	0	-
Overheating thermostat:		75°C ±5°C on hot side heat sink surface. Not wired in series with TEMs. Use it to control a relay.
Operating temperature:		Max. 62°C at nominal voltage.
TE-Module(s) temperature specification:		Max. surface temperature: 80°C.
Enclosed:		Turbulators fitted in liquid channels. 2 x L-PNPP-6-1/8
Packing:		Individual cardboard box.

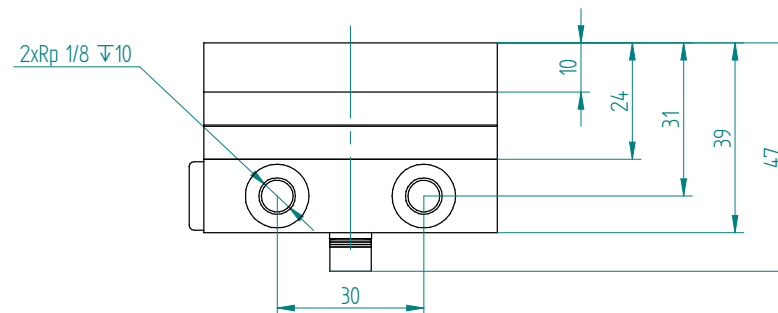
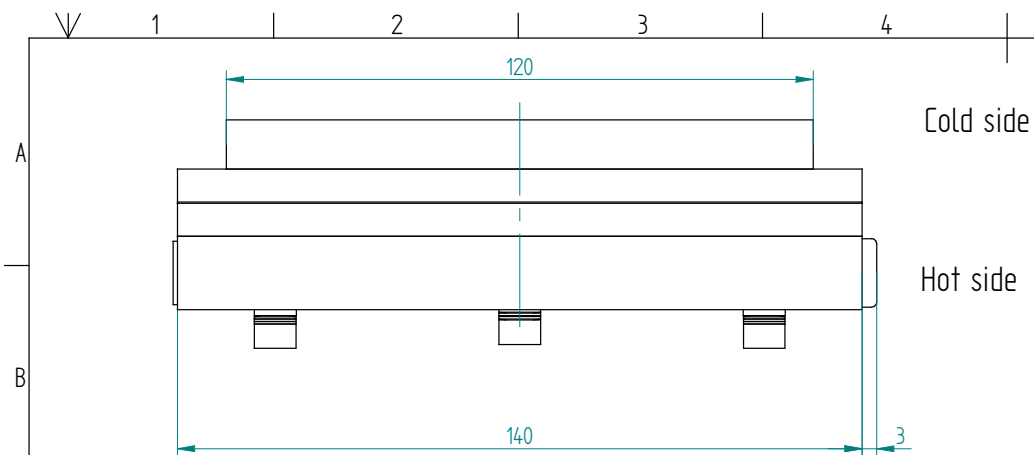


For overheating protection the cooler is equipped with a bimetal thermostat. The maximum rating for the thermostat is 8 A DC. For systems with 8 A or less the thermostat can be connected directly in series with the ThermoElectric Modules (TEMs). Otherwise connect the TEMs to the power source through a relay of suitable rating which state is controlled with the bimetal thermostat.

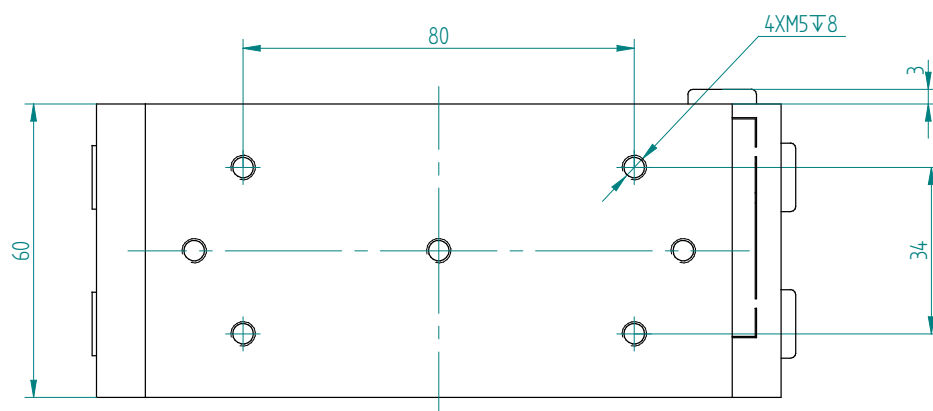
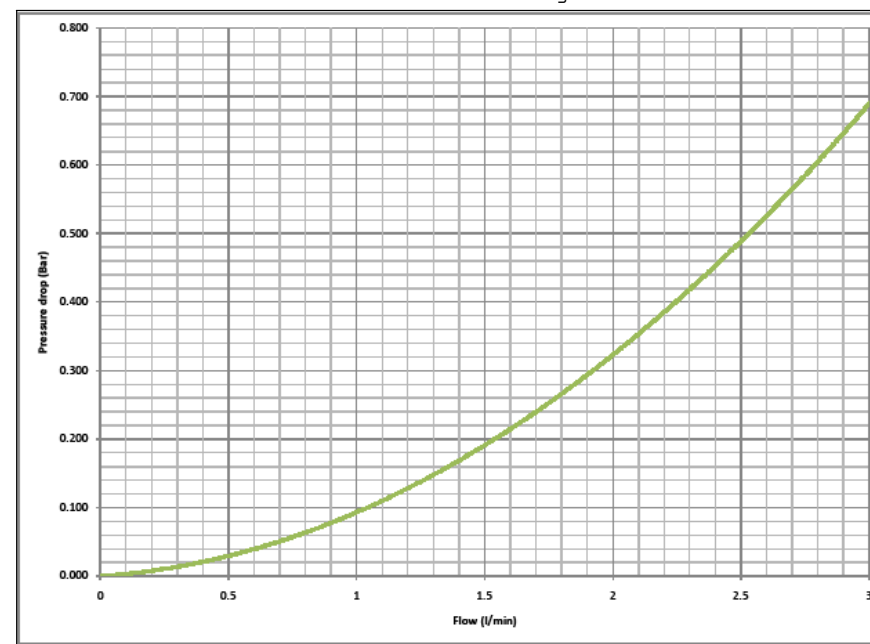
General tolerances: SS-ISO 2768-1 v	First angle projection:	Dimension units: Metric [mm]
--	----------------------------	---------------------------------

Note:
Cooled liquid block needs to be isolated from air humidity to minimize risk for condensation and thermally insulated for best performance.

Comment / Deviations: Heat sinks and, if applicable, D-plates and shrouds in anodized aluminium. RoHS. Hi-Pot tested 750VDC					
Designed by: M. Nyman	Checked by: C. Johansson	Approved by: C. Johansson	Release date: 2011-10-20	Project: Standard	Customer:
Laird Technologies S-43153 Mölndal, Sweden tfn: +46 31 420530, fax: +46 31 247909 e-mail: info@lairdtech.com Web: www.lairdtech.com			Title: TE ASSEMBLY 24VDC DIRECT-LIQUID		
Part nr: DL-120-24-00-00-00			Rev: 05	Version: -	Scale: 1:1
			Size, sheet A3, 1/5		



Typical Pressure - Flow behavior of liquid block assembly.
(for more information contact Laird Technologies customer service)



D-Plate tolerances:

Flatness: $\square 0.1/100$

Roughness: $\sqrt{3.2}$

General tolerances: SS-ISO 2768-1 v
First angle projection: \triangle
Dimension units: Metric: [mm]

Comment / Deviations:
Heat sinks and, if applicable, D-plates and shrouds in anodised aluminium. RoHS. Hi-Pot tested 750VDC

Designed by: M. Nyman
Checked by: C. Johansson
Approved by: C. Johansson
Release date: 2011-10-20
Project: Standard
Customer:

Laird Technologies
S-43153 Molndal, Sweden
tfn: +46 31 420530, fax: +46 31 247909
e-mail: info@lairdtech.com
Web: www.lairdtech.com

Title: TE ASSEMBLY 24VDC DIRECT-LIQUID

Part nr: DL-120-24-00-00-00
Rev: 05
Version: -
Scale: 1:1
Size, sheet: A3, 215

Mouser Electronics

Authorized Distributor

Click to View Pricing, Inventory, Delivery & Lifecycle Information:

[Laird Technologies:](#)

[DL-120-24-00-00-00](#)