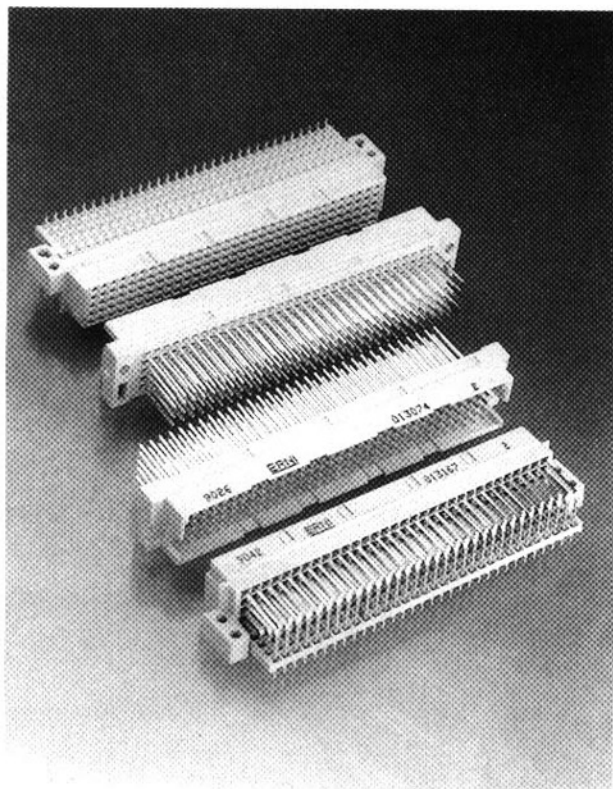


Size TE 160

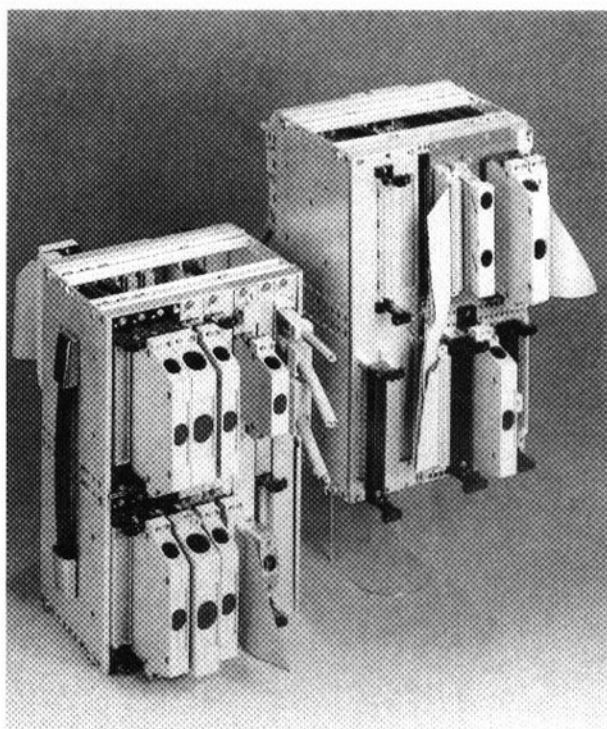
reversed style of size E 160



Size TE 160 female connectors are fitted with a locating strip. This plastic component is attached to the extended mounting flanges and serves to guide the pins accurately.

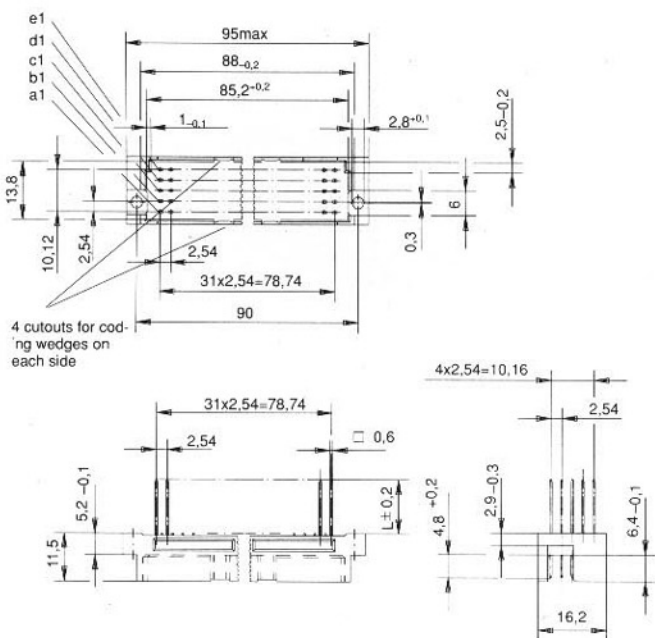
The extended mounting flanges have two mounting holes at a pitch of 5.08 mm.

The length of the mounting flanges provides improved support for the connector on the PC board.

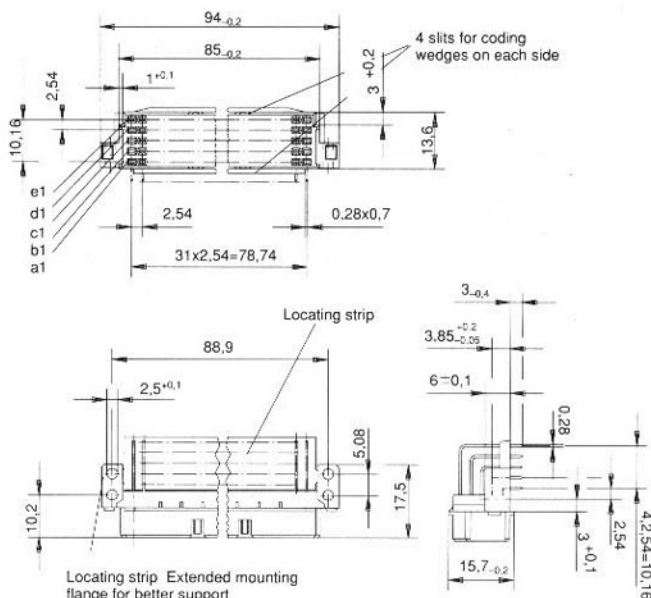


Dimensional drawings for size TE 160

Male connector



Female connector



Ordering details for size TE160

Male connector

STV-TE 160-M-abcde			
	107	207	307
	PBTP 013 073	013 074	013 075

STV-TE 160-M-abcde			
	107	207	307
	PBTP 013 070	013 071	013 072

Female connector

STV-TE 160-F-abcde			
	107	207	
	PBTP 013 166	013 167	

To make assembly of the female connectors on the PC board more simple and more reliable a locating strip and extended mounting flanges are supplied.

For ordering details for male connectors with press-fit pins please refer to the "ERNIPRESS" data sheet.

Male connectors with early make / last break contacts in rows a, b, c, d or e are available on request.

Further versions on request.

<u>Part-No.</u>	<u>Page</u>
013070	2
013071	2
013072	2
013073	2
013074	2
013075	2
013166	2
013167	2