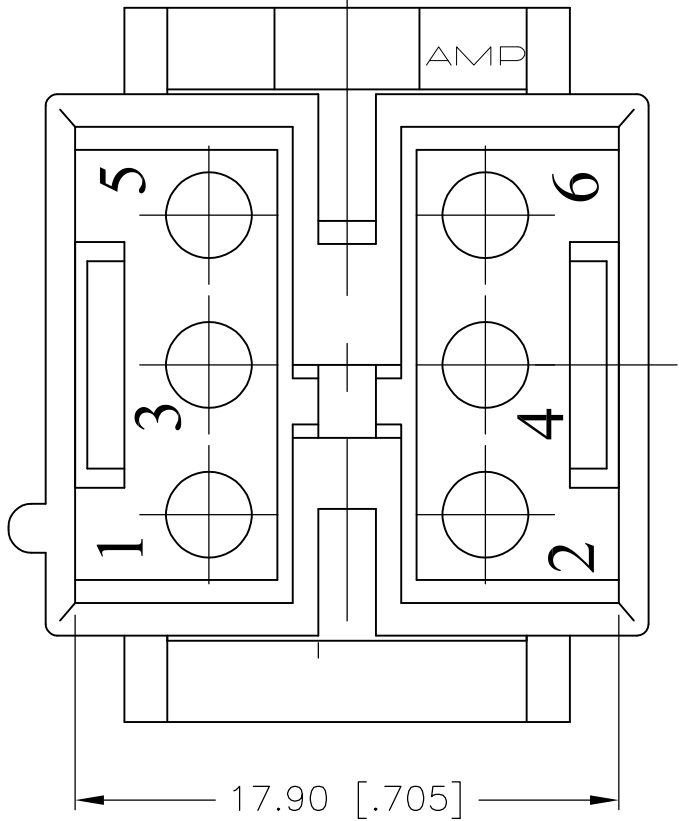
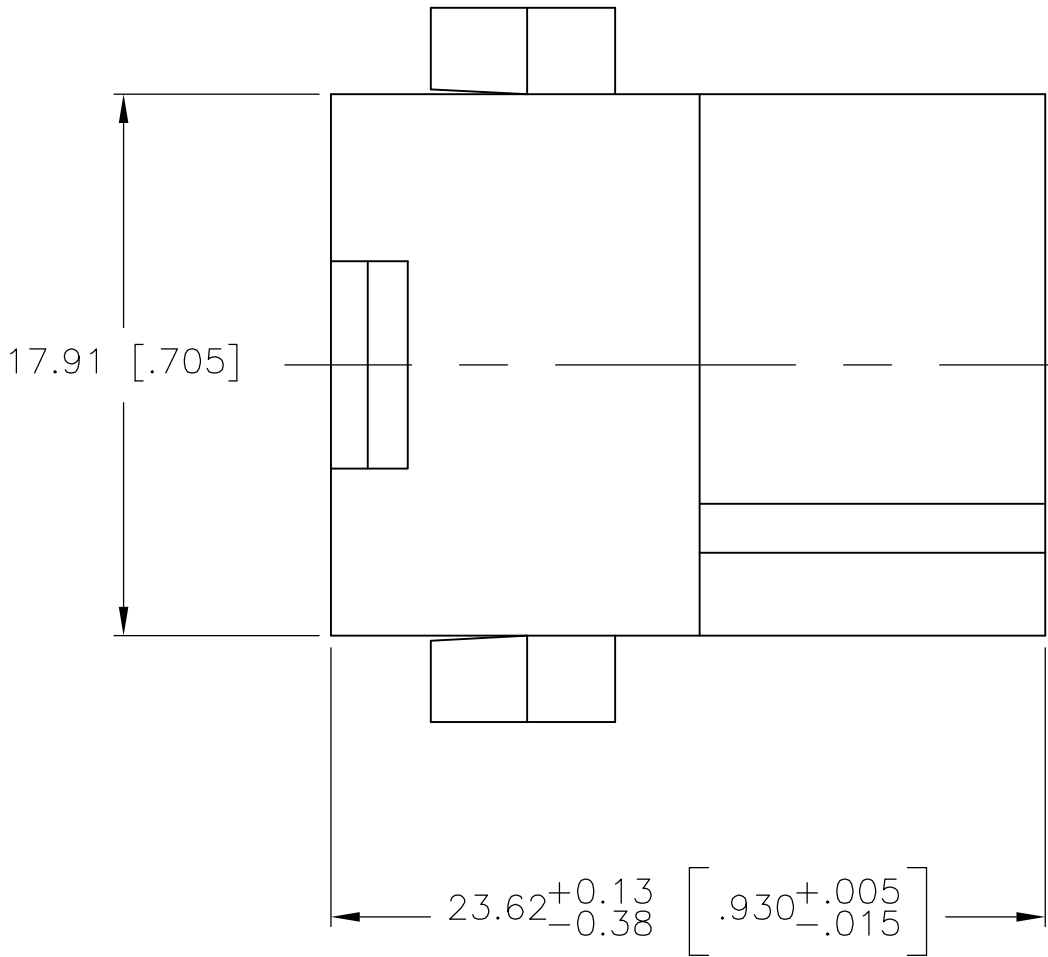
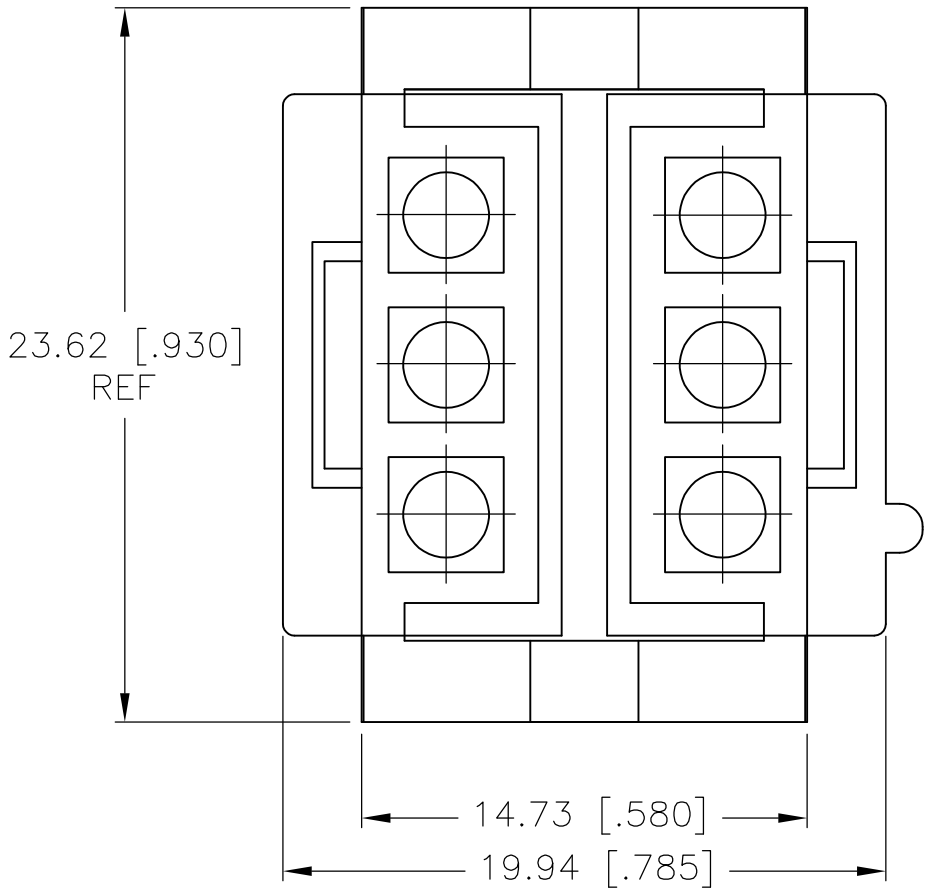
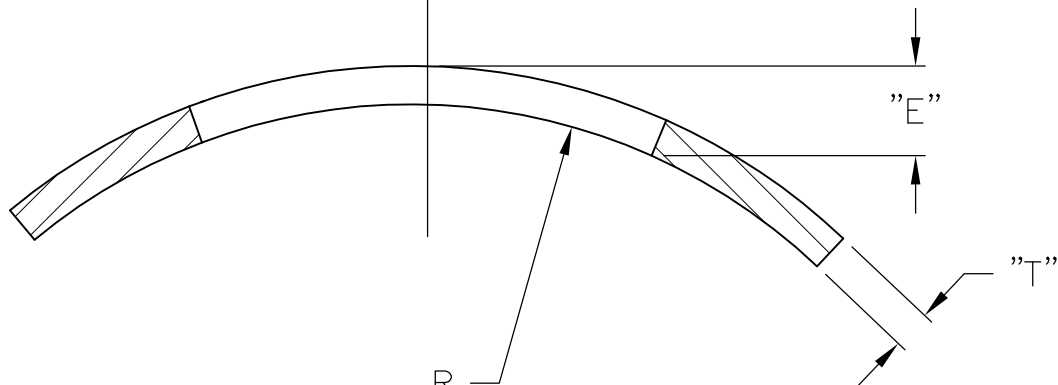
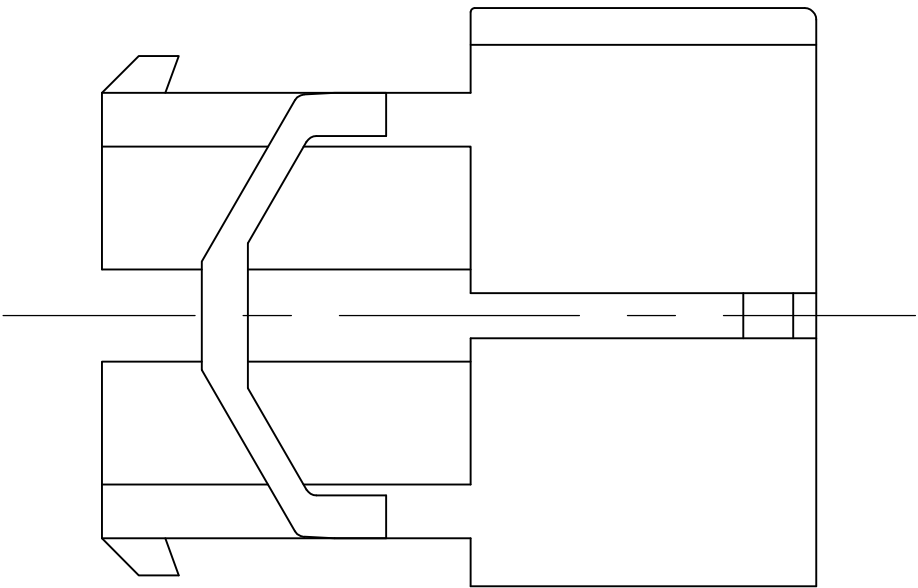
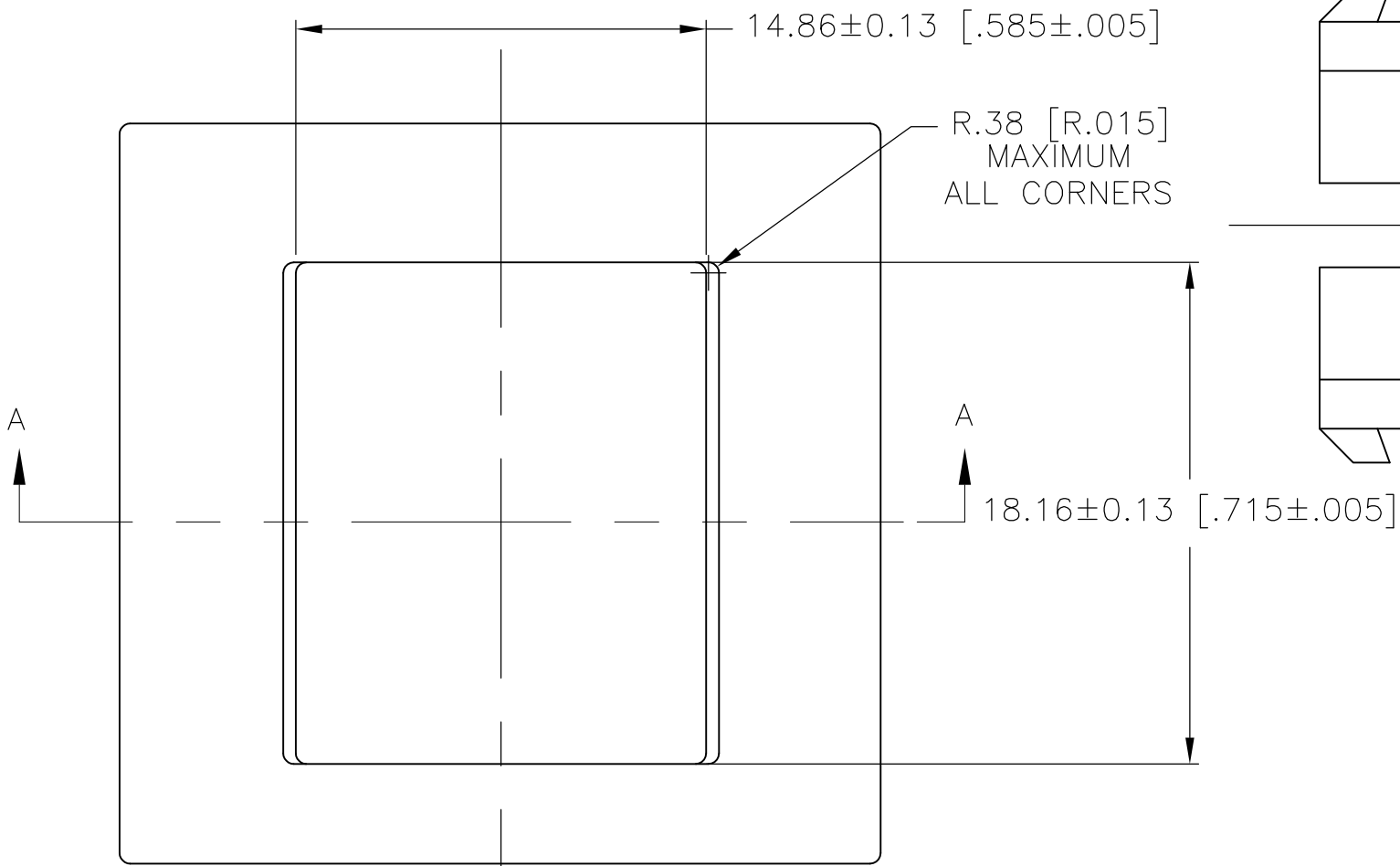


LOC	DIST	REVISIONS					
		P	LTR	DESCRIPTION	DATE	DWN	APVD
CM	00		N	ECO-07-028188	06DEC07	KW	CC



- TO BE USED WITH MATE-N-LOK(TM) DUAL LANCE PINS.
- TO BE USED WITH PLUG 480696.
- EFFECTIVE PANEL THICKNESS "E" IS 1.02 [.040]–2.54 [.100] AND IS DEPENDENT ON "T" & "R".
- CAP MUST BE INSERTED IN A ROCKING MANNER.
- HOUSING MUST ENTER PANEL IN THE SAME DIRECTION AS THE PUNCH.
- PANEL MUST NOT HAVE ANY MATERIAL (PAINT, PORCELAIN, ETC.) APPLIED IN THE MOUNTING HOLE AREA THAT WOULD DECREASE RETENTION OF THE HOUSING IN THE PANEL.



SECTION A-A
RECOMMENDED PANEL CUTOUT FOR 6 CIRCUIT MOTOR MOUNT CAP

GREEN	NYLON	1-480697-5
RED	NYLON	1-480697-2
NATURAL	NYLON	1-480697-0
COLOR	MATERIAL	PART NO.

THIS DRAWING IS A CONTROLLED DOCUMENT.		DWN S. HOOVER 22-MAY-2003	Tyco Electronics Corporation Harrisburg, PA 17105-3608			
DIMENSIONS: mm [INCHES]		CHK D. COLEY 22-MAY-2003				
TOLERANCES UNLESS OTHERWISE SPECIFIED:		APVD D. COLEY 22-MAY-2003	NAME CAP, MATE-N-LOK(TM), 6 CIRCUIT			
0 PLC ± 1 PLC ± 2 PLC ± 0.13 [.005] 3 PLC ± 4 PLC ±		PRODUCT SPEC	SIZE A2			
ANGLES ± 0°30'		APPLICATION SPEC	CAGE CODE 00779			
FINISH		WEIGHT	DRAWING NO C=480697			
MATERIAL		CUSTOMER DRAWING	RESTRICTED TO			
		SCALE 4:1	SHEET 1 OF 1			
			REV N			