

Specifications

Insulation Resistance:	500MΩ at 150V DC
Withstanding Voltage:	700V AC for 1 minute
Contact Resistance:	30mΩ max. at 10mA and 20mV
Operating Temp. Range:	-25°C to +85°C
Reflow-soldering Temp.:	220°C for 60 seconds
Mating Cycles:	20 insertions maximum
Allowable Torque (max.):	- for 1-time screw connection = max 0.147 Nm - for repetitive screw connection = min 0.078 Nm max 0.098 Nm

Adapter Part Number

ICP-100-4-1 (with 2 x M2.5 - 12.0)

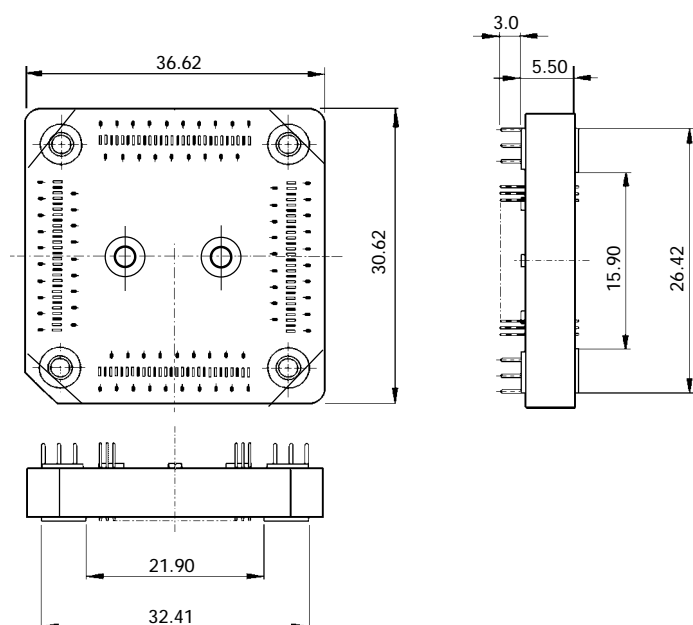
Compatible Socket (Part No.)

IC149-100-KS11113-0 (w/o pos. pins)
IC149-100-KS11113-1 (with pos. pins)

Materials and Finish

Housing: PTFE, glass filled UL94V-0
Contact: Phosphor Bronze
Plating: Au 0.3µm min. over 2.5 ~ 4.5µm Ni

Outline Adapter Dimensions (Reference Only)

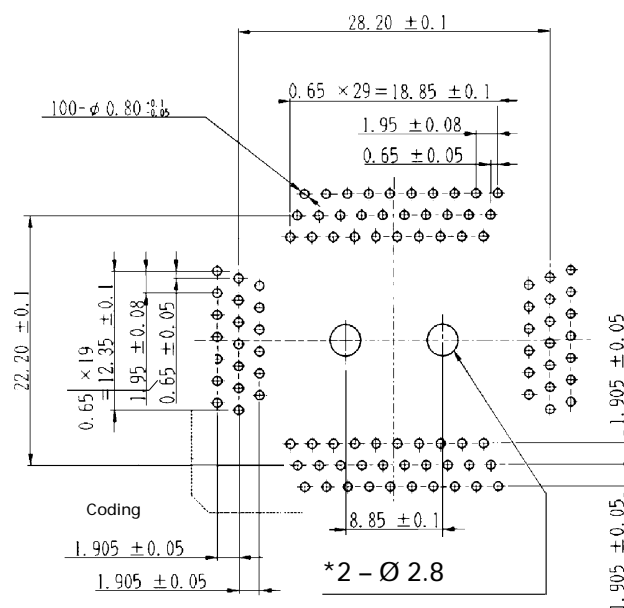


Remarks

1. Ensure a clean contact area. Fluxes, dust and other impurities may cause corrosion and contact problems.
2. Careful attention must be taken when fixing the Adapter, since it is made from thermoplastic material.
By exceeding the maximum torque a perfect performance can no longer be guaranteed.

Adapter PCB-Layout (IC149-100-KS1113-*)

Top View from Soldering Side



* PCB thickness from 1.2 - 3.4mm

Specifications

Insulation Resistance:	500MΩ at 150V DC
Withstanding Voltage:	700V AC for 1 minute
Contact Resistance:	30mΩ max. at 10mA and 20mV
Operating Temp. Range:	-25°C to +85°C
Reflow-soldering Temp.:	220°C for 60 seconds
Mating Cycles:	20 insertions maximum
Allowable Torque (max.):	- for 1-time screw connection = max 0.147 Nm - for repetitive screw connection = min 0.078 Nm max 0.098 Nm

Adapter Part Number

ICP-100-4-4 (with 4 x M2.0 - 12.0)

Compatible Socket (Part No.)

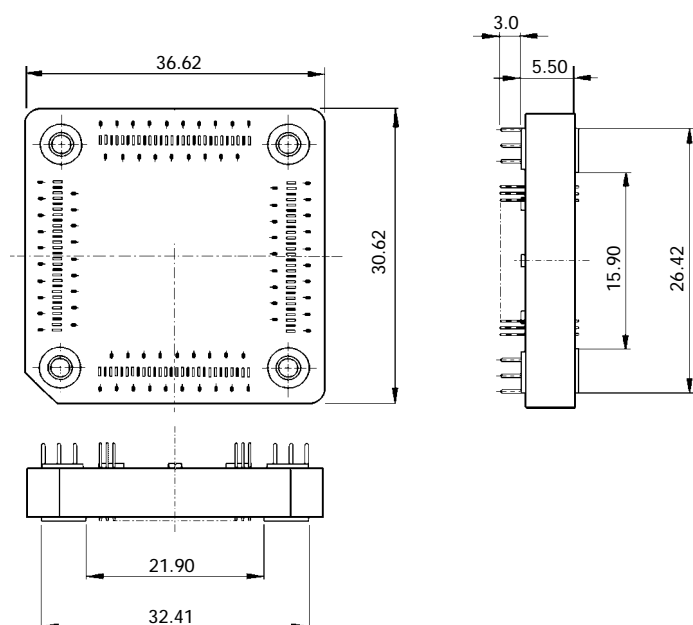
IC149-100-014-B5 (w/o pos. pins)

IC149-100-114-B5 (with pos. pins)

Materials and Finish

Housing: PTFE, glass filled UL94V-0
Contact: Phosphor Bronze
Plating: Au 0.3µm min. over 2.5 ~ 4.5µm Ni

Outline Adapter Dimensions (Reference Only)

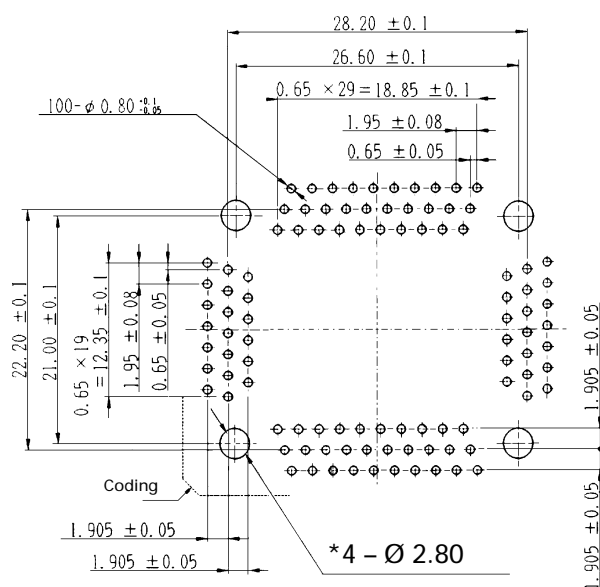


Remarks

1. Ensure a clean contact area. Fluxes, dust and other impurities may cause corrosion and contact problems.
2. Careful attention must be taken when fixing the Adapter, since it is made from thermoplastic material.
By exceeding the maximum torque a perfect performance can no longer be guaranteed.

Adapter PCB-Layout (IC149-100-*14-B5)

Top View from Soldering Side



* PCB thickness from 1.2 - 3.4mm

Specifications

Insulation Resistance:	500MΩ at 150V DC
Withstanding Voltage:	700V AC for 1 minute
Contact Resistance:	30mΩ max. at 10mA and 20mV
Operating Temp. Range:	-25°C to +85°C
Reflow-soldering Temp.:	220°C for 60 seconds
Mating Cycles:	20 insertions maximum
Allowable Torque (max.):	- for 1-time screw connection = max 0.147 Nm - for repetitive screw connection = min 0.078 Nm max 0.098 Nm

Adapter Part Number

ICP-100-5

Compatible Socket (Part No.)

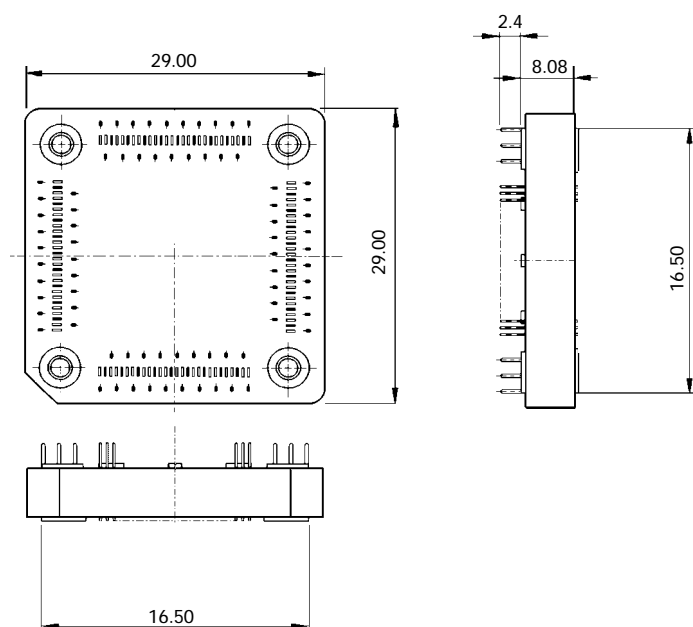
IC149-100-025-B5 (w/o pos. pins)

IC149-100-125-B5 (with pos. pins)

Materials and Finish

Housing: PTFE, glass filled UL94V-0
Contact: Phosphor Bronze
Plating: Au 0.3µm min. over 2.5 ~ 4.5µm Ni

Outline Adapter Dimensions (Reference Only)

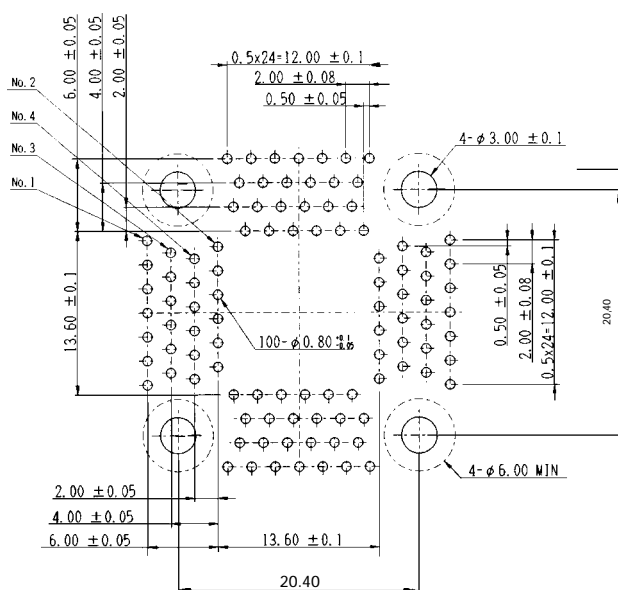


Remarks

1. Ensure a clean contact area. Fluxes, dust and other impurities may cause corrosion and contact problems.
2. Careful attention must be taken when fixing the Adapter, since it is made from thermoplastic material. By exceeding the maximum torque a perfect performance can no longer be guaranteed.

Adapter PCB-Layout (IC149-100-*25-B5)

Top View from Soldering Side



Note: No conduits within this hatched area.

Specifications

Insulation Resistance:	500MΩ at 150V DC
Withstanding Voltage:	700V AC for 1 minute
Contact Resistance:	30mΩ max. at 10mA and 20mV
Operating Temp. Range:	-25°C to +85°C
Reflow-soldering Temp.:	220°C for 60 seconds
Mating Cycles:	20 insertions maximum
Allowable Torque (max.):	- for 1-time screw connection = max 0.147 Nm - for repetitive screw connection = min 0.078 Nm max 0.098 Nm

Adapter Part Number

ICP-100-6

Compatible Socket (Part No.)

IC149-100-028-B5 (w/o pos. pins)

IC149-100-128-B5 (with pos. pins)

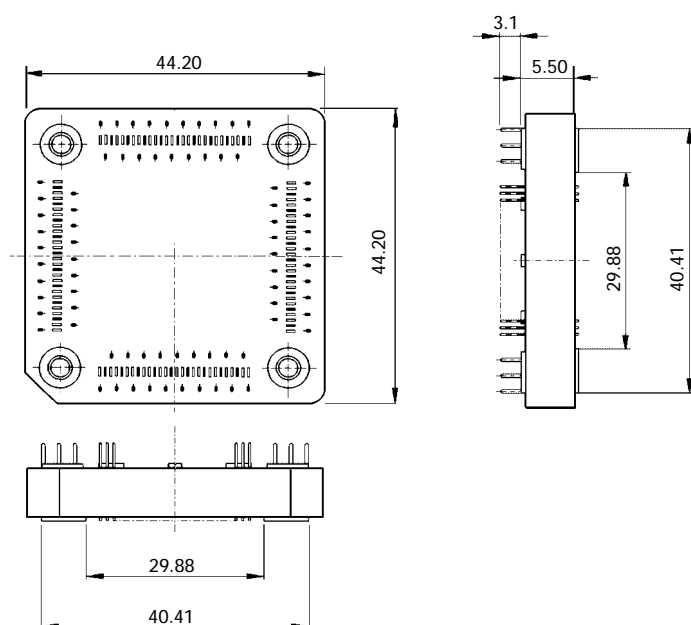
Materials and Finish

Housing: PTES, glass filled UL94V-0

Contact: Phosphor Bronze

Plating: Au 0.3μm min. over 2.5 ~ 4.5μm Ni

Outline Adapter Dimensions (Reference Only)



Remarks

1. Ensure a clean contact area. Fluxes, dust and other impurities may cause corrosion and contact problems.
2. Careful attention must be taken when fixing the Adapter, since it is made from thermoplastic material. By exceeding the maximum torque a perfect performance can no longer be guaranteed.

Adapter PCB-Layout (IC149-100-*28-B5)

Top View from Soldering Side

