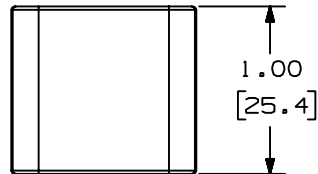


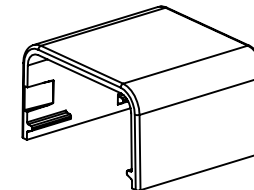
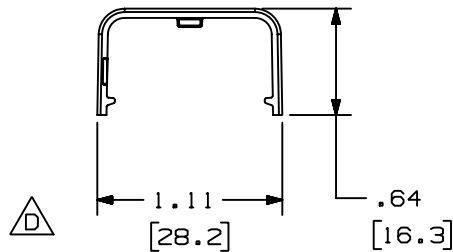
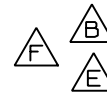
THIS COPY IS PROVIDED ON A RESTRICTED BASIS AND IS NOT TO BE USED IN ANY WAY DETRIMENTAL TO THE INTERESTS OF PANDUIT CORP.



PANDUIT PART NO.	WEIGHT
CFX5	.5 LB/100 PCS (249 g/100 PCS)

NOTES:

1. SEE CURRENT CATALOG FOR ADDITIONAL PART NUMBER SUFFIXES TO INDICATE COLOR AND OR PACKAGE QUANTITY.
2. THIS PRODUCT IS INTENDED TO BE USED WITH PANDUIT TYPE LD5 AND LDP5 RACEWAY.
3. NOMINAL WALL THICKNESSES: .055 [1.4].
4. DIMENSIONS IN PARENTHESIS ARE IN METRIC.



CAD FILENAME/LAYERS D35012BJ\_LD\_CFX5\_03.PRT

PANDUIT CORP. TINLEY PARK, ILLINOIS

COUPLER FITTING COVER (CFX5)  
CUSTOMER DRAWING

3	03-15-04	JHEP	RGRO	F. REMOVED CD5 FROM NOTE 2	35012-10	RGRO	RGRO		
--	-----	-----	-----	E. NOTE 2 WAS LD2P5. D. CORRECTED VIEWS SHOWING 2D PICTURES.	-----	-----	-----		
2	07-06-99	HIW	HIW	C. REVISED MATERIAL WAS PVC.	35012-10	HIW	HIW		
1	09-23-96	JBA	CEF	B. ADDED LD55 TO NOTE #2. A. REV'D P/N: WAS CFC5.	35012-10	CEF	CEF		
R	03-04-96	DW	CEF	RELEASED TO PRODUCTION	35012-10	CEF			
REV	DATE	BY	CHK	DESCRIPTION	ECN	CHK	CUST	SUP	

UNLESS OTHERWISE SPECIFIED,  
DIMENSIONAL TOLERANCES ARE:  
(.X) ± (.XXX) ±.015 [.4]  
(.XX) ±.03 [.8] ANGLES ±

UNLESS OTHERWISE SPECIFIED,  
ALL DIMENSIONS ARE GIVEN  
IN INCHES, THIRD ANGLE PROJECTION.

DRAWN BY  
DW

MAT'L:

SCALE  
NONE

DATE  
03-04-96

ABS/PC

DRAWING NO.

35012-10

DWG  
SIZE  
A

CHECKED BY  
CEF



# Mouser Electronics

Authorized Distributor

Click to View Pricing, Inventory, Delivery & Lifecycle Information:

Panduit:

CFX5IW-X