

THA-19 Flush Ring Handle



Characteristic

A flat type handle with no extrusion on the installed surface.

Application

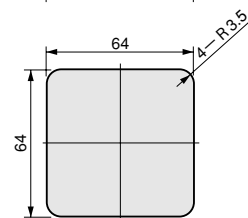
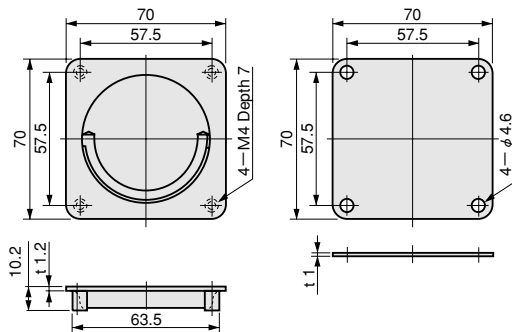
Distribution boards / Distribution panels / Doors for small devices

Specification

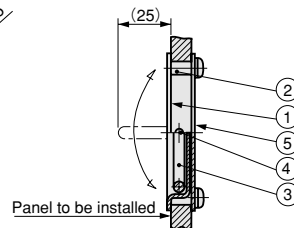
Model No.	Net Weight (g)	Code No.	
THA-19	121.5	3035	

Parts List

No.	Parts Name	Material	Finish	Quantity
1	Cup	BSP	Ni	1
2	Tap Collar	BSBM		4
3	Handle			1
4	Pin			2
5	Rear Panel	BSP		1



Layout of a Hole for Installation



Installation Example