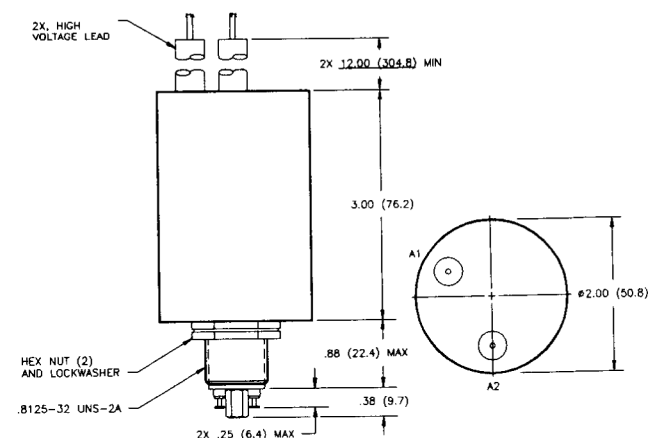
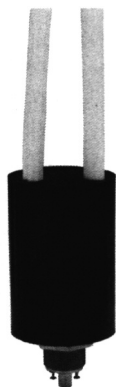


## K70 Series Make Only Load Switching — 70 kV Relays

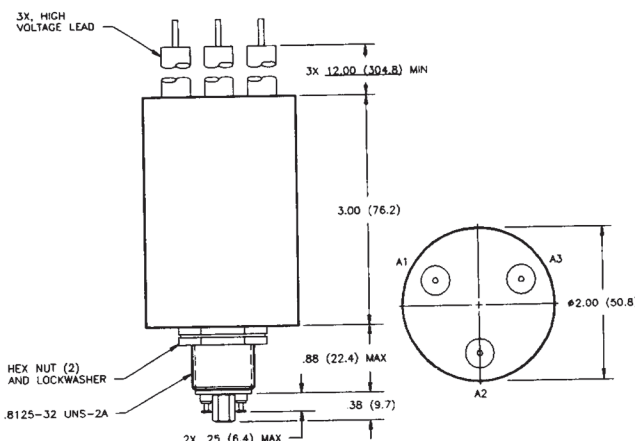
### K70A and K70B Product Facts

- New, small, compact 70 kV relay package
- SF-6 gas-filled for capacitive discharge and high voltage isolation applications
- Suitable for charging and discharging of high voltage capacitors
- Safe for use in adverse environments



### K70C Product Facts

- SPDT version of K70A
- SF-6 gas-filled for capacitive discharge and high voltage isolation applications
- Suitable for charging and discharging of high voltage capacitors



### Product Specifications for K70A, K70B and K70C

#### Contact Arrangement —

K70A — SPST-NO  
K70B — SPST-NC  
K70C — SPDT

#### Contact Form —

K70A — A  
K70B — B  
K70C — C

**Test Voltage, DC or 60 Hz (Peak)** —  
75 kV

**Rated Operating Voltage (Peak)** —  
DC — 70 kV

60 Hz RMS — 30 kV

**Continuous Carry Current, Max.** —  
DC or 60 Hz — 10 A  
Coil Hi-Pot (Vrms, 60 Hz) — 500 A

#### Contact Capacitance —

Between Open Contacts — N/A  
Open Contacts to Ground — N/A

**Contact Resistance, Max.** —  
2.0 ohm\*

For factory-direct application assistance,  
dial 800-253-4560, ext. 2055, or  
805-220-2055.

**Operate Time, Max.** — 20 ms

**Release Time, Max.** — 15 ms

**Shock, 11ms, 1/2 Sine (Peak)** —  
20 g

#### Vibration —

Peak — 10 g (55 to 500 Hz)

#### Operating Ambient Temperature

Range — 0°C to +85°C

**Mechanical Life** — 500,000 cycles

**Weight, Nominal** —

510.3 g (18 oz.)

#### Note:

\*Contact resistance for gas-filled  
relays measured at 28 Vdc, 1 Amp

### Coil Data

<b>Volts, Nominal</b>	<b>26.5 Vdc</b>
<b>Pickup, Max.</b>	<b>22 Vdc</b>
<b>Dropout</b>	<b>1-10 Vdc</b>
<b>Coil Resistance (±10%)</b>	<b>75 Ω</b>

Ratings listed are for 25°C, sea level  
conditions

### Ordering Information

**Sample Part Number** ►

**Series:**

**Contact Form:**

A = SPST-NO      B = SPST-NC      C = SPDT

**Coil Voltage:**

8 = 26.5 Vdc, Turret Terminal

**High Voltage Connections:**

4 = Flying Leads, 12"

7 = Flying Leads, 72"

8 = Flying Leads, 36"

**Mounting:**

1 = Threaded

**K70 A 8 4 1**