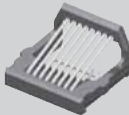




LJRS-8P8C-H-01



CAT-EX-LJRS-01

LJRS, CAT-EX SERIES

REPLACEMENT CONTACTS & TOOLS

FEATURES

- Single and multi-port field replaceable Mod Jacks (See MODM-LJ Series)
- End-user replaceable contact array for 100,000 or more cycles
- Replace contacts in high cycle applications
- Replace damaged contacts
- Replace contacts without desoldering connector or opening box
- Single row of contacts for true serial pinout
- Compression contacts interface with PCB
- LEDs available

SPECIFICATIONS

For complete specifications and recommended PCB layouts see www.samtec.com?LJRS

Insulator Material:

Black LCP

Contact Material:

BeCu

Plating:

Gold on Contacts

Operating Temp Range:

-25°C to +90°C

Voltage Rating:

120 VAC max

Contact Resistance:

20 mΩ

Minimum Cycles:

500

System Applications:

CAT3

RoHS Compliant:

Yes

LJRS**8P8C****PLATING****01****CAT****EX****LJRS****01****LJRS**

= Replacement Contact Array for MODM-LJ Series

-H

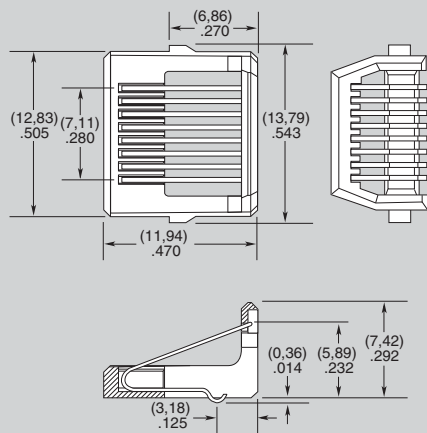
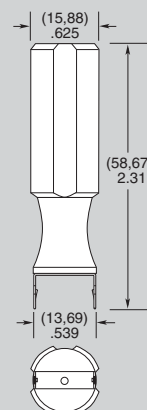
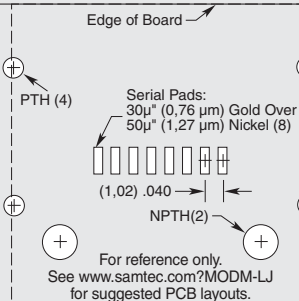
= 30μ" (0,76 μm) Gold

-EX

= Extractor Tool

-LJRS

= LifeJack® Replaceable Sled

**APPLICATION**

For complete specifications see www.samtec.com?CAT-EX

LIFEJACK® CAT5e & CAT5 APPLICATIONS

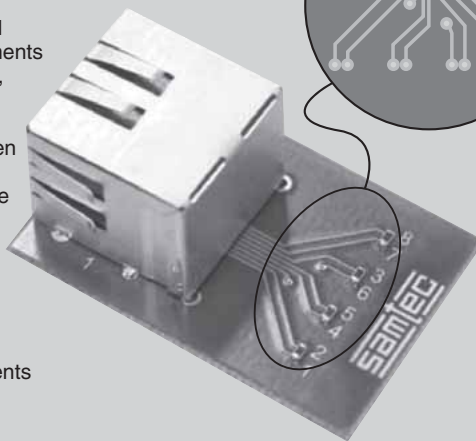
CAT 5e

LifeJack®

met or exceeded TIA/EIA-568-B.2-2001 Category 5e requirements for Insertion Loss (IL), Near-End Crosstalk (NEXT), and Far-End Crosstalk (FEXT) when the proper capacitive compensation scheme was implemented.

CAT5

LifeJack® also met TIA/EIA-568-A Category 5 requirements for Return Loss (RL).



Crosstalk Compensation Scheme

The fundamental idea behind crosstalk compensation is to introduce a capacitive coupling effect between the differential pairs to enhance the crosstalk rejection performance. The technique used is controlled routing and spacing of the PCB traces to create the capacitive coupling effect.

Due to technical progress, all designs, specifications and components are subject to change without notice.

WWW.SAMTEC.COM

SAMTEC USA • Tel: +1-800-SAMTEC-9 or +1-812-944-6733 SAMTEC NORTHERN CALIFORNIA • Tel: +1-408-395-5900 SAMTEC SOUTHERN CALIFORNIA • Tel: +1-800-726-8329
 SAMTEC SOUTH AMERICA • Tel: +55 31 3786 3227 SAMTEC UNITED KINGDOM • Tel: +44 01236 739292 SAMTEC GERMANY • Tel: +49 (0) 89 / 89460-0
 SAMTEC FRANCE • Tel: +33 1 60 95 06 60 SAMTEC ITALY • Tel: +39 039 6890337 SAMTEC NORDIC/BALTIC • Tel: +46 8 4477280 SAMTEC BENELUX • Tel: +44 01236 739292
 SAMTEC ISRAEL • Tel: +972 3 7526600 SAMTEC INDIA • Tel: +91 80 3272 1612 SAMTEC ANZ • Tel: +613 9580 0683 SAMTEC SINGAPORE • Tel: +65 6745 5955 SAMTEC JAPAN • Tel: +81 45 475 1385
 SAMTEC SHANGHAI • Tel: +86 21 6083 3766 SAMTEC SHENZHEN • Tel: +86 755 83776780 SAMTEC TAIWAN • Tel: +886 2 2735 6109 SAMTEC HONG KONG • Tel: +852 26904658 SAMTEC KOREA • Tel: +82 31 717 5685