

92mm sq.

San Ace 92W

25mm thick, 25mm thick(WP type)
25mm thick(WS type), 38mm thick(WV type)



General Specifications With a pulse sensor Specifications for pulse sensors ⇔ Refer to Page 297

With PWM speed control function ⇔ Refer to Page 299

- Material Frame: Plastics (Flammability: UL94V-0),
Impeller: Plastics (Flammability: UL94V-1)
- Expected Life Varies for each model (Indoor, L10: Survival rate: 90% at 60°C ,
rated voltage, and continuously run in a free air state)
- Lead Wire ⊕red ⊖black (Sensor) yellow (Control) brown
- Storage Temperature -30°C to +70°C (Non-condensing)

92×92×38mm (Mass : 265g)

IP 55 Dust resistant device with protection against water jets

WV type

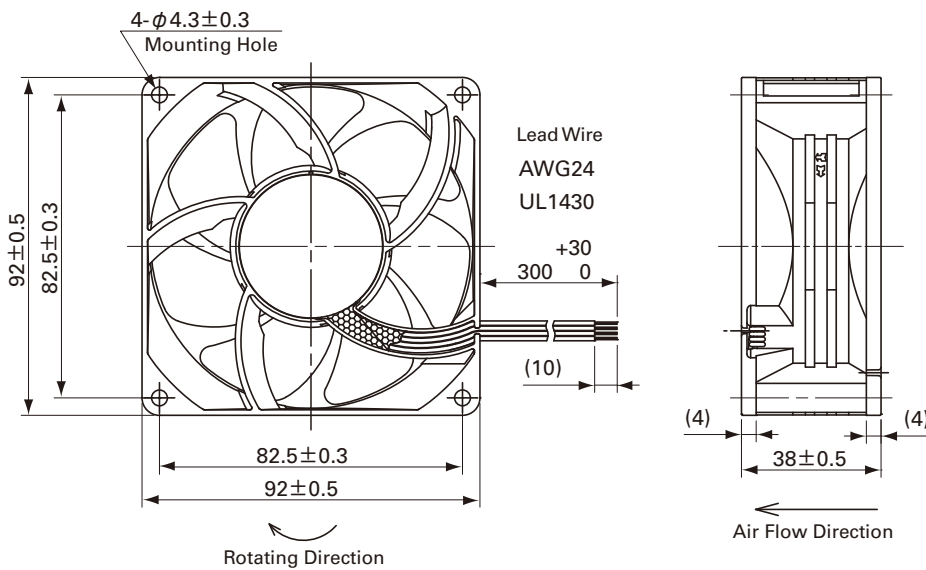
Specifications

Model No.	Rated Voltage [V]	Operating Voltage Range [V]	PWM duty cycle* [%]	Rated Current [A]	Rated Input [W]	Rated Speed [min ⁻¹]	Max. Air Flow [m ³ /min] [CFM]	Max. Static Pressure [Pa] [inchH ₂ O]	SPL [dB(A)]	Operating Temperature [°C]	Expected Life [h]
9WV0948P1H001	48	40.8 to 52.8	100	0.82	39.4	8,500	5.05 178	385 1.55	64	-10 to +70	30,000
			0	0.14	6.7	4,000	2.37 83.7	85.2 0.34	45		

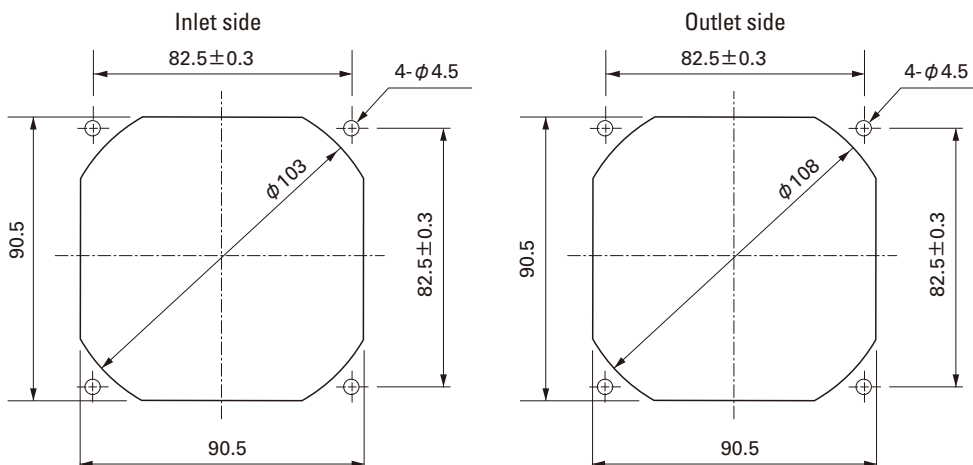
※PWM Frequency : 25kHz

Without Sensor Pulse Sensor PWM Control Available in all models.

Dimensions (Unit : mm)



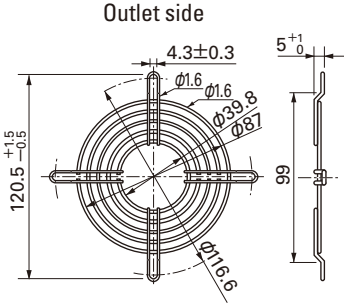
Reference dimension of mounting holes and vent opening (Unit : mm)



Options (Unit : mm)

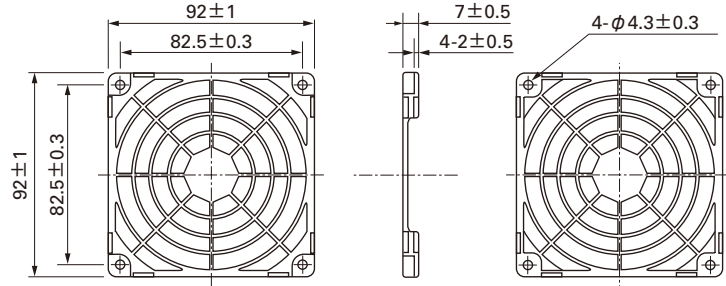
Finger guards

Model : 109-099C Surface treatment : Nickel-chrome plating (silver) Color



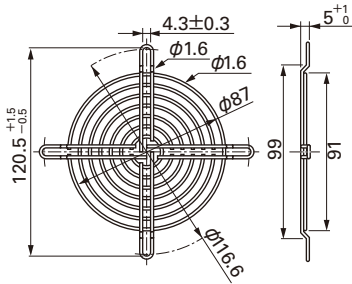
Resin Finger guards

Model : 109-1001G



Model : 109-099E Surface treatment : Nickel-chrome plating (silver) Color
: 109-099H : Cation electropainting (black)

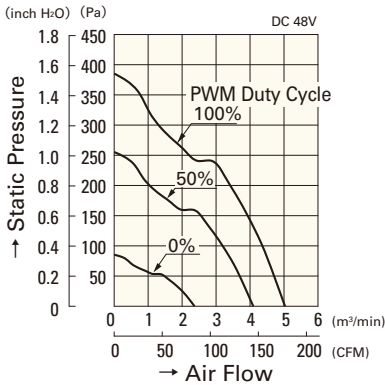
Inlet side, Outlet side



Splash Proof Fan 92mm

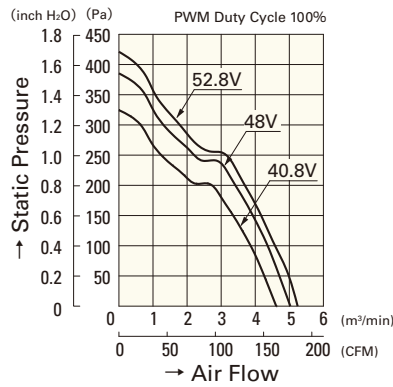
Air Flow - Static Pressure Characteristics

PWM Duty Cycle



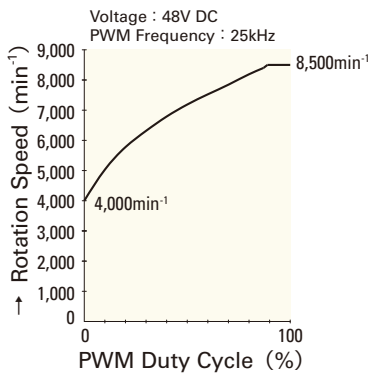
9WV0948P1H001

Operating Voltage Range



9WV0948P1H001

PWM Duty - Speed Characteristics Example



9WV0948P1H001

92mm