

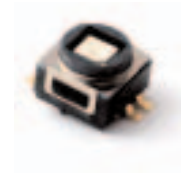
K5AT Lighted SMT Tact Switch

Features

- High bright LED's
- Gold plated dome contact offering superior contact reliability in time
- Excellent ergonomics: sharp tactile feel and audible click
- Reduced space usage on board "2 in 1"
- 40 N overload
- Tape and reel
- RoHS compliant and compatible

Typical Applications

- Application requiring illumination
- Server, storage
- Network infrastructure
- Telecom
- Medical



B

Tactile Switches

Specification

FUNCTION: momentary action

CONTACT ARRANGEMENT: Normally Open

TERMINALS: SMT with positioning pegs as an option

Mechanical

Type	Operating force FA ¹ Newtons (grams)	Operating life (operations)	Travel (total travel) mm(mm)
K5AT WH 43GP	4.0 (400)	100,000	0,5 (0.8)

¹ Tolerances of operating force FA is $\pm 25\%$.

Packaging

180 or 900 pieces per reel
Reel dim. 180mm or 380mm

Electrical

POWER MIN/MAX: 0.02VA / 1.0VA

VOLTAGE MIN/MAX: 20mVdc – 32 Vdc

CURRENT MIN/MAX: 0.1mA – 100mA

CONTACT RESISTANCE: <100m Ω

INSULATION RESISTANCE: >1G Ω initial, >10M Ω after damp heat

BOUNCE TIME: <10ms

Environmental

OPERATING TEMPERATURE: -40°C to 125°C

STORAGE TEMPERATURE: -55°C to 125°C

RELATIVE HUMIDITY: 90 to 96% according to NF EN 60068-2-30

PROTECTION: dust protection and flux tight (IP 40)

OVERLOAD: 40N min

Process

SOLDERING: Compatible with the lead free soldering profile.

No washing

Materials

LEAD FREE

CONTACTS: Au over Ni

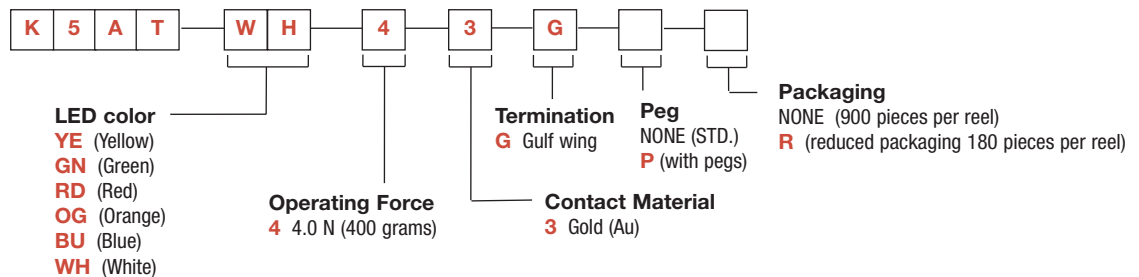
SOLDERING: Au over Ni

HOUSING: Thermoplastic UL94 VO

LED: type P-LCC-2

How To Order

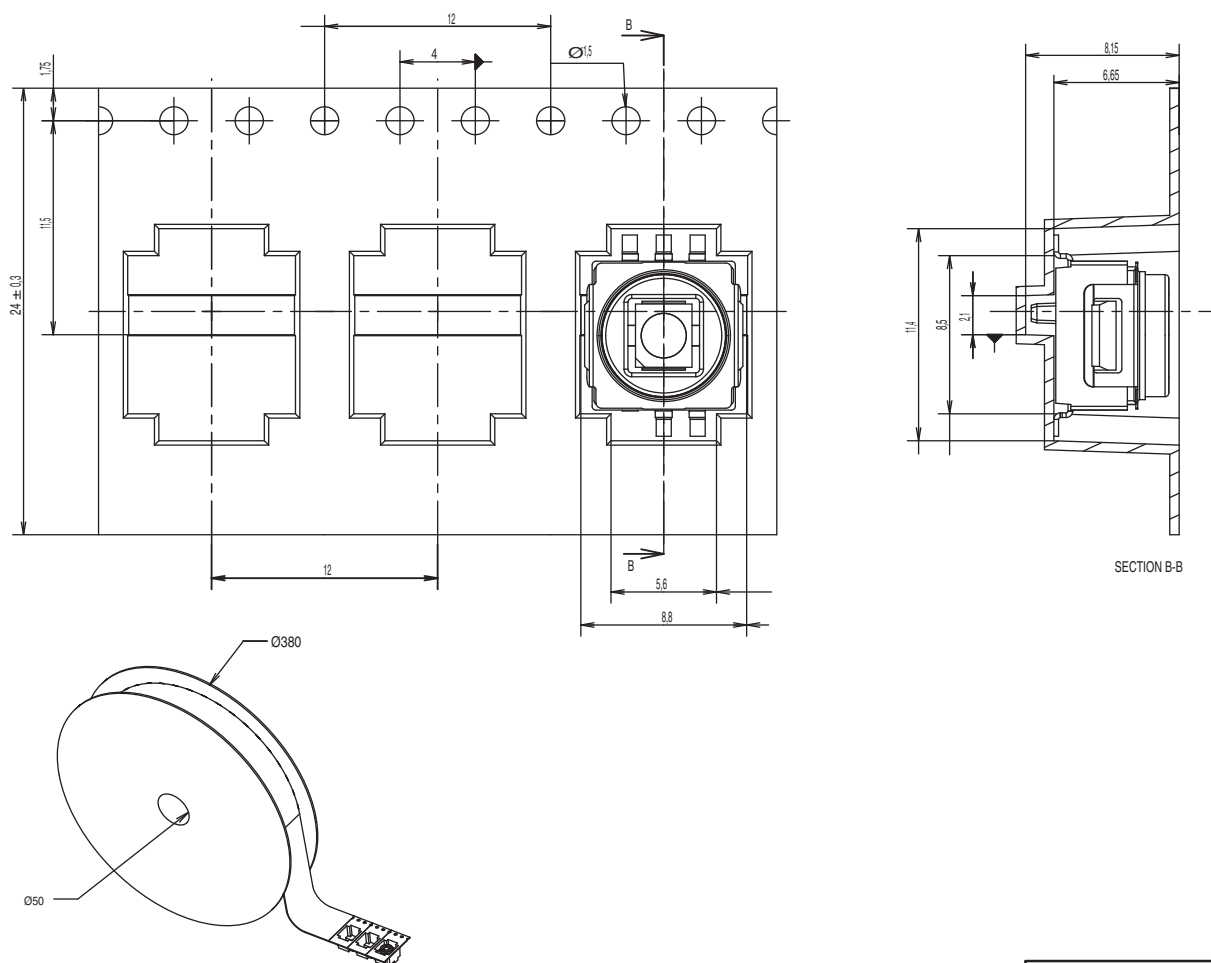
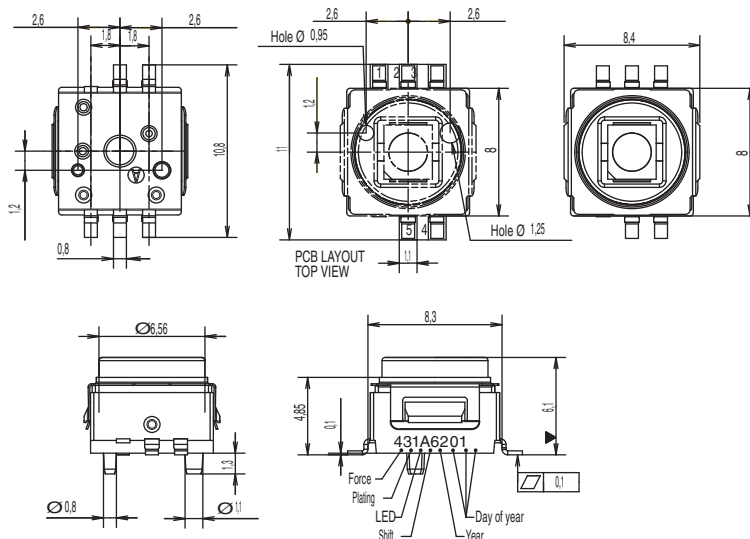
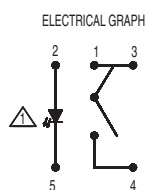
Our easy build-a-switch concept allows you to mix and match options to create the switch you need. To order, select desired option from each category and place it in the appropriate box.



K5AT

Tactile Switches

B



SECTION B-B



Dimensions are shown: Inch (mm)
Specifications and dimensions subject to change