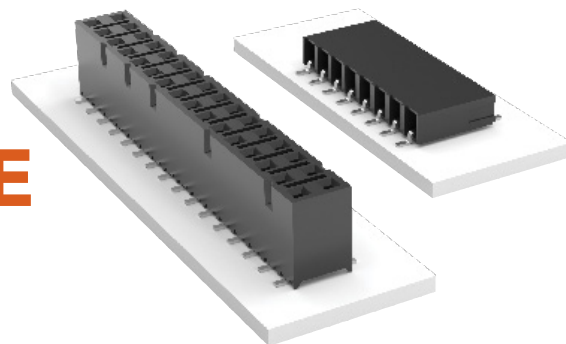


TIGER CLAW™ SURFACE MOUNT SOCKET



(2.54 mm) .100" PITCH • SSM SERIES

SSM

Mates:

TSW, MTSW,
TST, TSS, ZST, ZSS,
DW, EW, ZW, TSM,
HMTSW, HTSW, TSSH,
BST, HTSS, TLW, MTLW

SPECIFICATIONS

Insulator Material:

Black Liquid Crystal Polymer

Contact Material:

Phosphor Bronze

Plating:

Au or Sn over
50 μ" (1.27 μm) Ni

Operating Temp Range:

-55 °C to +125 °C with Gold
-55 °C to +105 °C with Tin

Current Rating (SSM/TSW):

5.2 A per pin
(2 pins powered)

Current Rating (SSM/TSM):

5.6 A per pin
(2 pins powered)

Voltage Rating:

405 VAC/573 VDC

Insertion Depth:

SV/DV = (4.34 mm) .171" to
(7.24 mm) .285" or pass-through
from top; (5.56 mm) .219"
plus board thickness minimum
from bottom;
SH/DH = (4.34 mm) .171" to
(6.35 mm) .250"

PROCESSING

Lead-Free Solderable:

Yes

-DH Coplanarity:

Less than 28 positions
(0.15 mm) .006" max*
More than 27 positions
(0.20 mm) .008" max*

-SH, -SV, -DV Coplanarity:

(0.15 mm) .006" max*
*(.004" stencil solution
may be available; contact
ipg@samtec.com)

ALSO AVAILABLE
Contact Samtec

Alignment pin



Notes:

Severe Environment
Testing qualified; aligns
with MIL-DTL-55302.
Visit samtec.com/set

Some sizes, styles and
options are non-standard,
non-returnable.

SSM	1	NO. PINS PER ROW	PLATING OPTION	ROW OPTION	OTHER OPTION
-----	---	------------------	----------------	------------	--------------

02 thru 36
(-SV, -SH, -DH)

02 thru 40
(-DV)

-F

= Gold flash
on contact,
Matte Tin on tail

-L

= 10 μ" (0.25 μm)
Gold on contact,
Matte Tin on tail

-SV

= Single Row
Vertical Pin

-DV

= Double Row
Vertical Pin

-SH

= Single Row
Horizontal Pin

-DH

= Double Row
Horizontal Pin

-“XXX”

= Polarized Position
(-BE not available)

-BE

= Bottom Entry
(-DV & -SV only)

-LC

= Locking Clip
(-DV & -SV only)
Contact Samtec for
-DH & -SH

-K

= (6.50 mm) .256" DIA
Polyimide film
Pick & Place Pad
(2 positions min.)
-DV & -SV only

-M

= Metal Pick
& Place Pad
(5 positions min.)
-DV only

-P

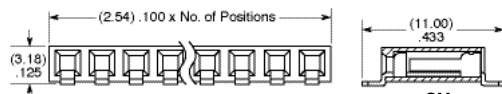
= Plastic Pick
& Place Pad
(-DV & -SV only)
(6 positions min.)
Contact Samtec
for availability on
smaller positions)

-TR

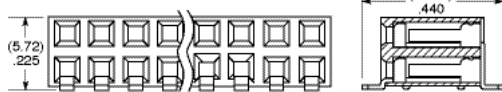
= Tape & Reel
(29 positions max.)

-FR

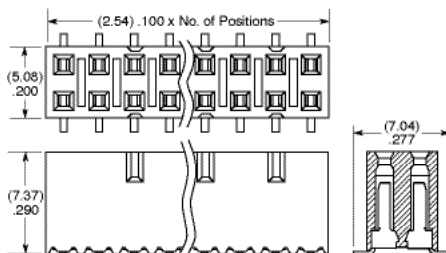
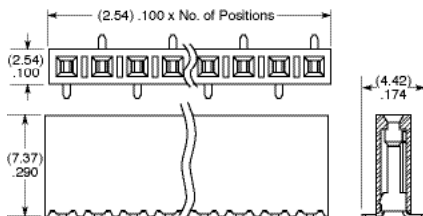
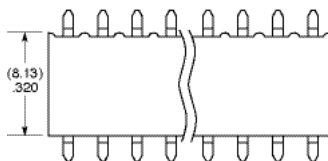
= Full Reel
& Reel
der max.
per reel;
amtec for
'breaks)
ons max.)



-SH



-DH



-DV

-LC

-K

-M