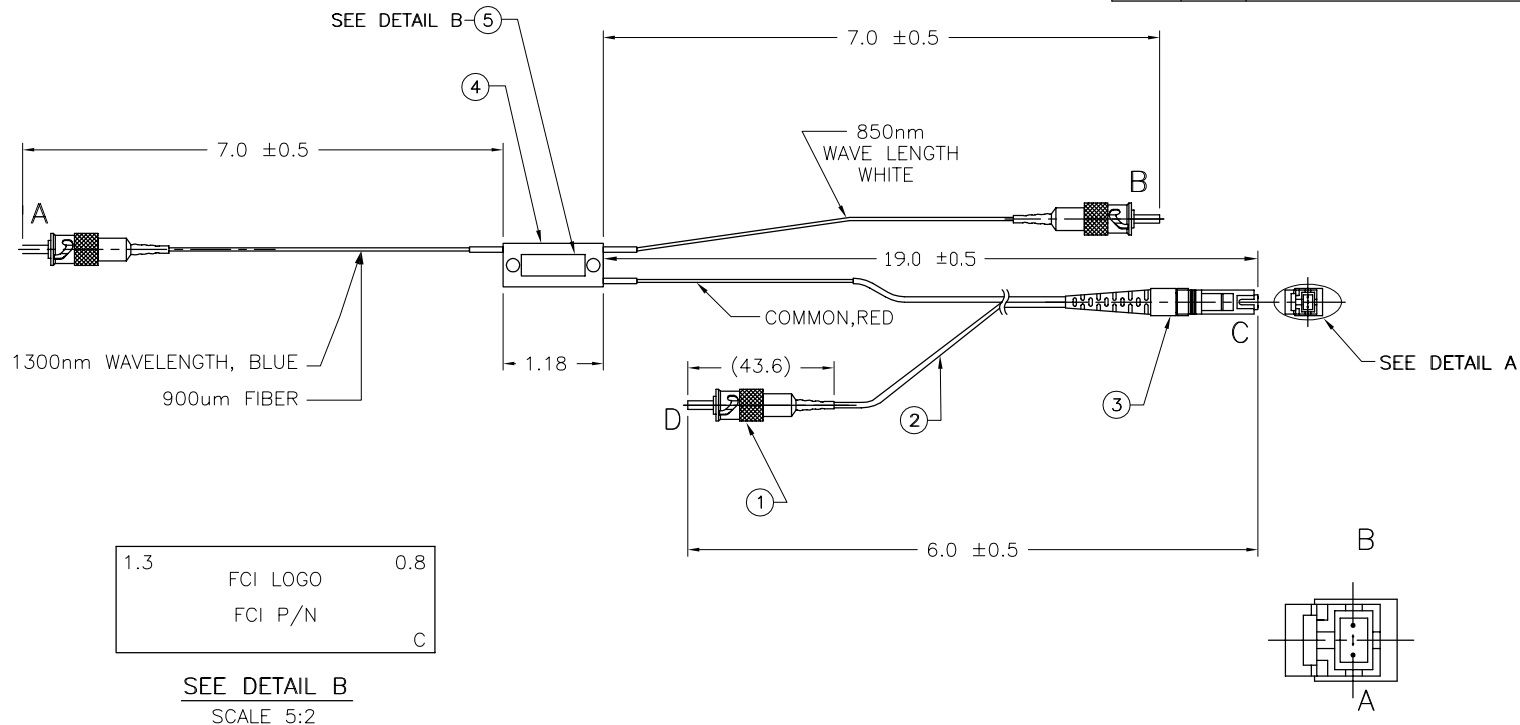
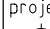
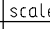


FCI P/N		PATH	PATH LOSS (dB MAX)	ISOLATION (dB MIN)	TESTED @ (nm)	COMPONENTS		
						ITEM	QTY.	DESCRIPTION
10013821-001LF		A-C	1.9	30	1300 ± 60nm	1	3	ST2 CONNECTOR,0.9mm,MM-127
		B-C	2.1	30	850 ± 60nm	2	"L"	CABLE,62.5/125/650
		C-D	1.1	N/A	850 & 1300 ± 60nm	3	1	MTRJ CONNECTOR KIT,MM,MALE
						4	1	WDM,MM,62.5,850/1300,62.5,MED
						5	1	LABEL,BRADY,0.25x0.75



NOTES:

- SEE DWG 55000 FOR SPECIFICATIONS AND TOLERANCES. NO ENDFACE GEOMETRY REQUIRED ON THIS PART.
- ALL FERRULES: THESE AREAS TO BE FREE OF CURED EPOXY AFTER POLISHING. THAT IS, THE OUTER CYLINDRICAL SIDEWALLS, THE DOMED END FACE, AND THE CHAMFER.
- ALL LENGTHS ARE MEASURED IN A LINEAR STATE, BENDS ARE SHOWN FOR DRAWING CLARITY ONLY.
- THIS PRODUCT MEETS EUROPEAN UNION DIRECTIVES AND OTHER COUNTRY REGULATIONS AS DESCRIBED IN GS-22-008.
- THIS PRODUCT IS NOT INTENDED TO BE EXPOSED TO A MANUFACTURING SOLDER PROCESS.
- "LF" INDICATES PRODUCT IS LEAD FREE.
EXAMPLE: 10013821-001LF IS LEAD FREE.

mat'l. code —				surface ASME Y14.5		tolerance ASME Y14.5		projection 		product family FIBRE OPTICS					
ltr ecn no dr date				tolerances unless otherwise specified		title		WDM,ASSM,MTRJ—ST—ST, MM—62.5							
H V06—0398 LP 2006/04/24				angles		NOMINALS ONLY		INCH							
— — — —						UNLESS NOTED									
C V03—0968 DAI 09/02/03								scale 1:2							
D V03—1308 PJ 12/18/03				dr		B.IRWIN 08/27/02				dwg no		sheet 1 of 2		size	
E V04—0173 DAI 02/25/04				engr		B.IRWIN 08/27/02				10013821		A4			
F V04—0458 HTB 05/06/04				chr		E.BOYER 10/03/02									
G V06—0036 DAI 01/17/06				appd		B.IRWIN 08/27/02				type CUSTOMER Drawing					
sheet index		revision sheet		H H		1 2									

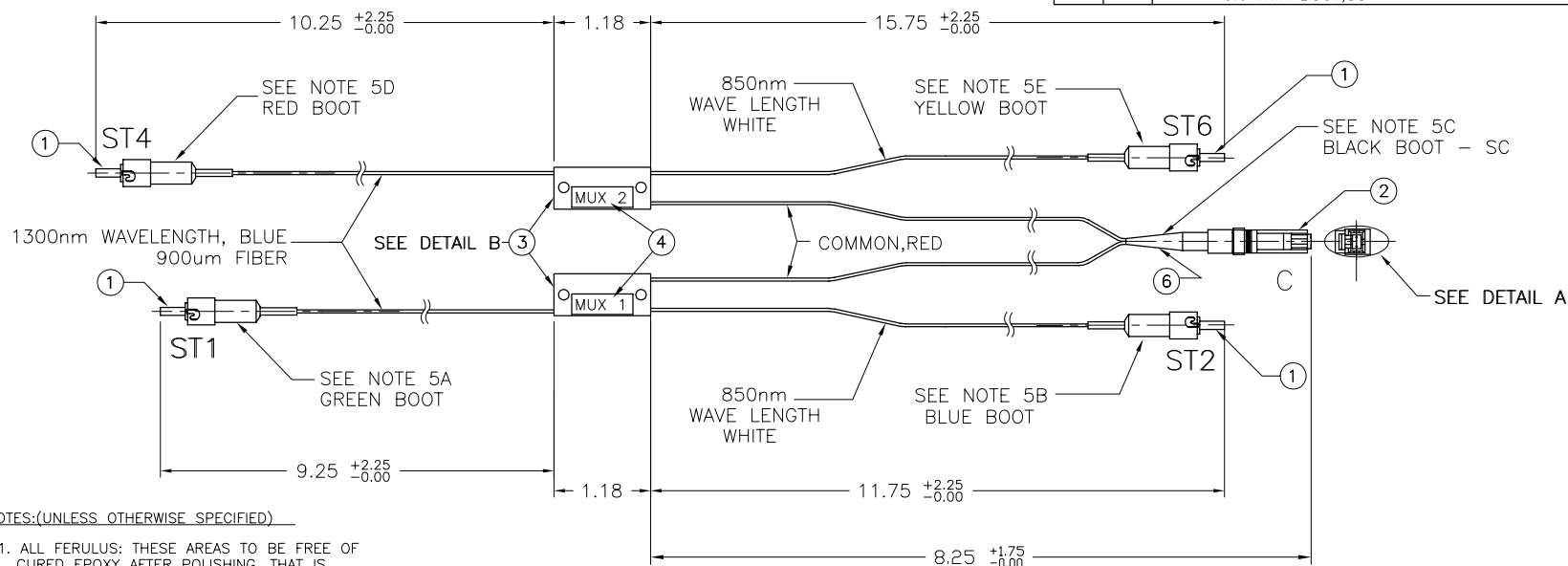
1.3 FCI LOGO 0.8
FCI P/N
C

SEE DETAIL B

SCALE 5:2

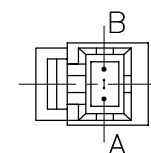
COMPONENTS

ITEM	QTY	DESCRIPTION
1	4	ST2 CONNECTOR,0.9mm,MM-127
2	1	MTRJ CONNECTOR KIT,MM,MALE
3	2	WDM,MM,62.5,850/1300,62.5,MED
4	1	LABEL,BRADY,0.25x0.75
5	4	ST BOOT, .9 mm
6	1	0.9 mm BOOT,SC



NOTES:(UNLESS OTHERWISE SPECIFIED)

- ALL FERULUS: THESE AREAS TO BE FREE OF CURED EPOXY AFTER POLISHING. THAT IS THE OUTER CYLINDRICAL SIDE WALLS, THE DOMED END FACE, AND THE CHAMFER
- BENDS IN CABLE ARE SHOWN FOR CLARITY ONLY. LENGTH MEASUREMENTS SHALL BE MADE BETWEEN COMPONENTS AS SHOWN WITH CABLE PULLED TAUGHT
- WDM SPECIFICATIONS:
WITH CONNECTORS
INSERTION LOSS:
(PER FOTP-34, METHOD A):
MUX 2.2 dB MAX 1.4dB TYP.
DEMUX 2.3dB MAX 1.4dB TYP.
DIRECTIVITY:
TYPICAL: > 55dB
MINIMUM: > 45dB
WAVELENGTH BANDPASS (nm):
TYPICAL: 120nm
MINIMUM: 100nm
ISOLATION:
MUX & DEMUX 35dB MIN (TYP. 42dB)
OPERATING TEMPERATURE: -40°C to +65°C
STORAGE TEMPERATURE: -40°C to +65°C
- ALL FIBRES ARE 62.5 micron FIBRES/ 125 microns CASE
- ALL FIBRES SHALL BE IDENTIFIED WITH COLOR CODED RUBBER BOOTS, COLORS SHALL BE AS FOLLOWS:
5A - GREEN 5C - BLACK 5E - YELLOW
5B - BLUE 5D - RED
- REFERENCE CLEARCUBE DRAWING 061024R2_0
- THIS PRODUCT MEETS EUROPEAN UNION DIRECTIVES AND OTHER COUNTRY REGULATIONS AS DESCRIBED IN GS-22-008.
- THIS PRODUCT IS NOT INTENDED TO BE EXPOSED TO A MANUFACTURING SOLDER PROCESS.
- "LF" INDICATES PRODUCT IS LEAD FREE. EXAMPLE:10013821-002LF IS LEAD FREE.



SEE DETAIL A

SCALE 3:2

mat'l. code				surface	tolerance	projection	product family
-				ASME Y14.5	ASME Y14.5	ASME Y14.5	FIBRE OPTICS
ltr	ecr	no	dr	date	tolerances unless otherwise specified	INCH	title
H					angles	NOMINALS ONLY	WDM,ASSM,MTRJ-ST-ST
					UNLESS NOTED	scale 1:2	MM-62.5
					dr	B.IRWIN	08/27/02
					enr	B.IRWIN	08/27/02
					chr	E.BOYER	10/03/02
					app	B.IRWIN	08/27/02
sheet	revision						dwg no
index	sheet						sheet 2 of 2
							size
							10013821
							A4
							type
							CUSTOMER Drawing