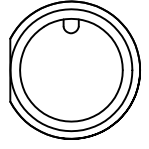


# QUOTATION/SAMPLE DRAWING

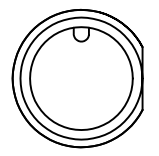
PART NUMBER:

**NOTES & SPECIFICATIONS:**

- EPOXY SEAL: YES/NO
- CUSTOMER PART NO.: \_\_\_\_\_ REV. \_\_\_\_\_

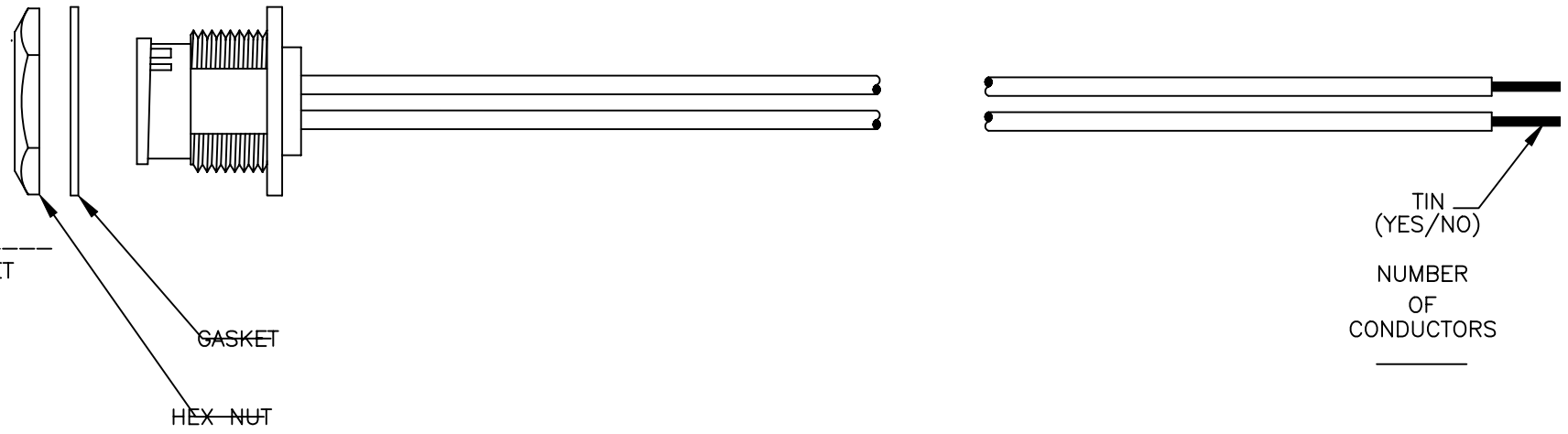


RIGHT FLAT (OPTIONAL)



FACE VIEW

CONTACT SIZE # \_\_\_\_\_  
PIN/SOCKET




TIN \_\_\_\_\_  
(YES/NO)  
  
NUMBER OF CONDUCTORS \_\_\_\_\_

- MEGA-CON-X
- MAXI-CON-X
- MULTI-CON-X
- MINI-CON-X
- MICRO-CON-X

WIRE INFORMATION	
PART NO.:	
WIRE O.D.:	
JKT COLOR:	
JKT MATERIAL:	

STRANDING:	AGENCY APPROVALS	
TINNED:	CABLE/WIRE	ASSEMBLY
SHIELD: NO	UL:	
GAUGE:	CSA:	
OTHER:	OTHER:	

WIRE COLOR CODE									
PIN #1	PIN #2	PIN #3	PIN #4	PIN #5	PIN #6	PIN #7	PIN #8	PIN #9	PIN #10
PIN #11	PIN #12	PIN #13	PIN #14	PIN #15	PIN #16	PIN #17	PIN #18	PIN #19	PIN #20

DO NOT SCALE PRINT		REV.	DATE	DESCRIPTION	INIT.
NOTICE - All information illustrated or revealed on this document is proprietary, and is the exclusive property of the CONXALL CORPORATION. Unauthorized duplication or distribution of the information contained in this document is prohibited.		DRAWN BY: G.A. DATE: 8/10/94		 601 E. WILDWOOD VILLA PARK, IL 60181	
		CHECKED BY:			
		APPROVED BY:		SCALE SIZE SHEET NTS A 1 OF 1	
UNLESS OTHERWISE SPECIFIED ALL UNITS ARE IN FEET, INCHES, AND FRACTIONS OF INCHES.		FILE: QUOTE11		CUSTOMER: MAXI-CON-X	
		DISK:		PART NUMBER: _____ REV. _____	