

MATERIAL NO.	"P" DIMENSION	PIN FINISH CODE	P.C. BOARD THICKNESS
43955-0101	5.10/(.201)	FINISH A	1.57±.20
43955-0201	5.10/(.201)	FINISH B	(.062±.008)
43955-0301	5.90/(.232)	FINISH A	2.36±.20
43955-0401	5.90/(.232)	FINISH B	(.093±.008)
43955-0501	6.70/(.264)	FINISH A	3.18±.20
43955-0601	6.70/(.264)	FINISH B	(.125±.008)

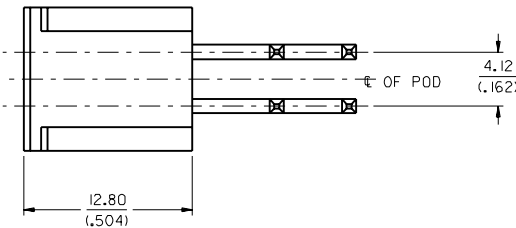
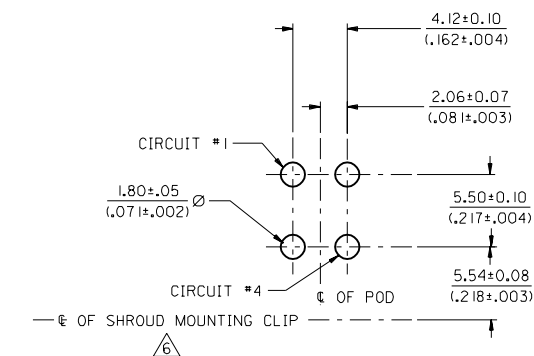
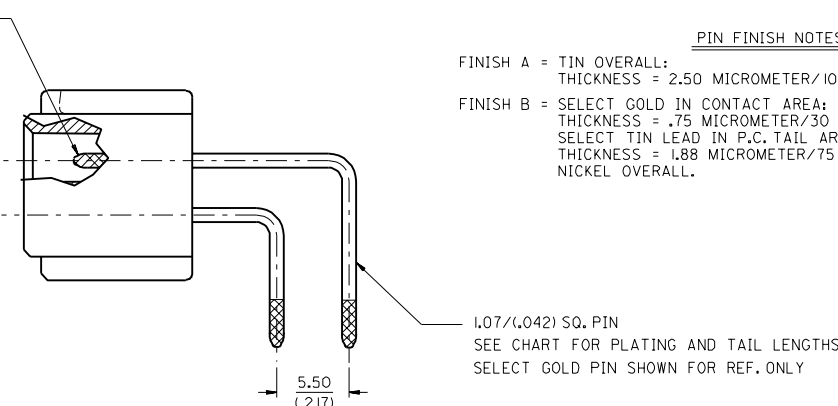
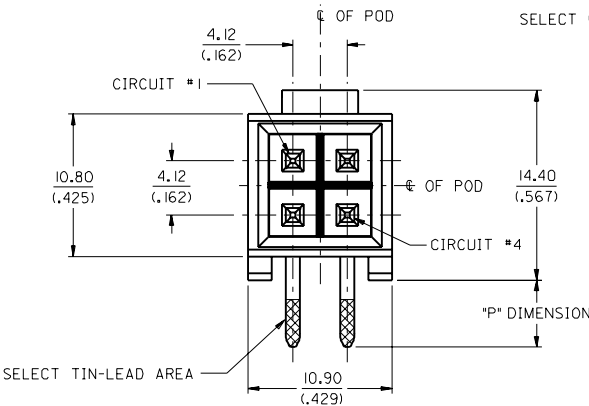
NOTES:

- MATERIAL: HOUSING: NYLON, GLASS FILLED, UL 94V-0.
COLOR: BLACK
PIN: BRASS
- FINISH: SEE PIN FINISH NOTES
- PRODUCT SPEC. : PS-43510-002
- ALL DIMENSIONS ARE REFERENCE ONLY EXCEPT P.C. BOARD LAYOUT DIMENSIONS.
- THIS PART IS DESIGNED TO BE USED WITH 44041 RIGHT ANGLE HEADER SHROUD ASS'Y.
⚠️ SEE DRAWING NO. SD-44041-001 FOR SHROUD MOUNTING CLIP HOLE DIMENSIONS.

PIN FINISH NOTES:

FINISH A = TIN OVERALL;
THICKNESS = 2.50 MICROMETER/100 MICROINCH MINIMUM

FINISH B = SELECT GOLD IN CONTACT AREA;
THICKNESS = .75 MICROMETER/30 MICROINCH MINIMUM;
SELECT TIN LEAD IN P.C. TAIL AREA;
THICKNESS = 1.88 MICROMETER/75 MICROINCH MINIMUM;
NICKEL OVERALL.



REV. PER O.C. REPORT EC NO. UCR 1999-0527 DRW: ELHAG 99/02/18 CHK: COMERC1 99/02/19 APPR: COMERC1 99/02/22	QUALITY SYMBOLS MAJOR $\nabla=0$ CRITICAL $\surd=0$	GENERAL TOLERANCES: (UNLESS SPECIFIED)		SCALE 4 : 1	DESIGN UNITS <input checked="" type="checkbox"/> mm <input type="checkbox"/> INCH	THIRD ANGLE PROJECTION	DIMENSIONS: <input checked="" type="checkbox"/> mm <input type="checkbox"/> INCH <input type="checkbox"/> mm ONLY	SHT REV
		4 PLACES ±0.--- ±.--- 3 PLACES ±0.--- ±.010 2 PLACES ±0.25 ±.016 1 PLACE ±0.40 ±.---	mm	INCH	DRAWN BY & DATE POLGAR 98/01/25	TITLE: RT. ANGLE HEADER POD ASS'Y., 4 CKT. MINI-FIT JR., COMPODRE SYSTEM	REVISION ON CAD ONLY	
2	REV	ANGULAR: ± 1/2°		CAD FILENAME S4395501.DGN	MATERIAL NO. SEE CHART	DRAWING NO. SD-43955-001	SHEET NO. 1 OF 1	SIZE C
		DRAFT WHERE APPLICABLE MUST REMAIN WITHIN DIMENSIONS		THIS DRAWING CONTAINS INFORMATION THAT IS PROPRIETARY TO MOLEX INCORPORATED AND SHOULD NOT BE USED WITHOUT WRITTEN PERMISSION.				