

CATALOG LISTING

HS-1070

PAGE 1 OF 1

REPLACES

PR-24188

RELEASE NO.

CHECK

11 OCT 99

SAV

CHECK

11 OCT 99

JJA

11 OCT 99

RASTER

DRAWN

MICRO SWITCH

a Honeywell Division

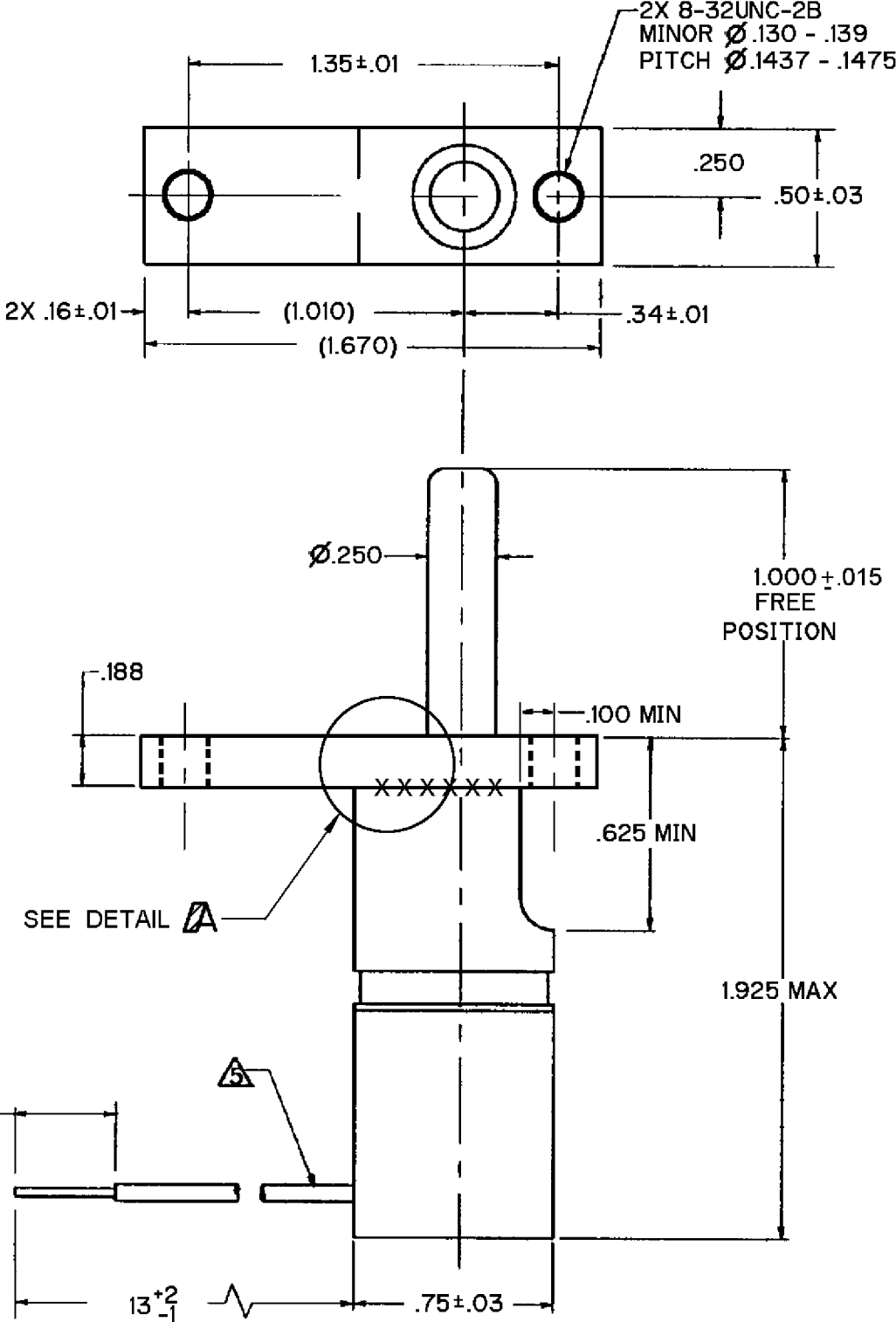
FED. MFG. CODE 91929

SWITCH - ENCLOSED

CATALOG LISTING

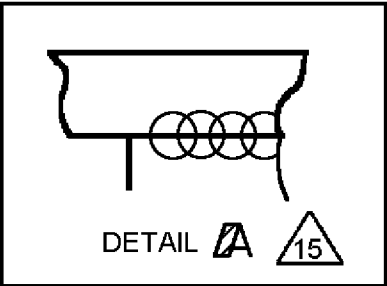
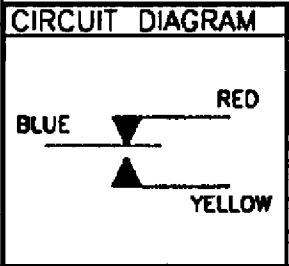
HS-1070

- NOTES
- 1 - SWITCH ASSEMBLY SHALL MEET THE REQUIREMENTS OF MS24331-1 EXCEPT AS NOTED BELOW
 - 2 - STAINLESS STEEL ENCLOSURE AND PLUNGER
 - 3 - SWITCH SEALED WATERTIGHT WITH FLUOROSILICONE O-RING USED FOR PLUNGER SEAL
 - 4 - PLASTIC MATERIAL(S) SHALL CONFORM TO MIL-M-14 OR MIL-M-24519
 - 5 3X NO. 20 WIRE LEAD PER MIL-W-22759/9-20 COLOR CODED: COMMON-BLUE, NORMALLY CLOSED-RED, NORMALLY OPEN-YELLOW, 0.37 STRIP LENGTHS ARE TINNED WITH 60/40 TIN/LEAD SOLDER
 - 6 - TEMPERTURE RANGE: -67°F TO +187°F (-55°C TO +85°C)
 - 7 - PRINT CIRCUIT DIAGRAM, FEDERAL MANUFACTURING CODE, CATALOG LISTING, AND DATE CODE, PERMANENTLY MARKED ON HOUSING
 - 8 - MECHANICAL LIFE: 50,000 CYCLES
 - 9 - SHOCK: MIL-STD-202, METHOD 213, TEST CONDITION 1: 100 g
 - 10 - VIBRATION: MIL-STD-202, METHOD 204, GRADE 1: 10-500 HZ
 - 11 - DESIGNED TO MEET REQUIREMENTS OF 00 - 160C:
ICING TEST: SECTION 24 CATAGORY B
HUMIDITY TEST: SECTION 6.3.2 CATAGORY B
ALTITUDE: SECTION 4.6
 - 12 - UNIT INCLUDES "23SX" TYPE(GOLD CONTACT) BASIC SWITCH (1)
 - 13 - FOR THE FIRST APPLICATION OF THE SWITCH, THE OPERATE POINT WILL OCCUR WHEN PLUNGER TRAVEL IS WITHIN THE PRETRAVEL SPECIFICATION (.040 INCH MAX).
 - 14 - THE RELEASE POINT DURING THE PLUNGER RETURN STROKE WILL DEPEND ON TOTAL PLUNGER DISPLACEMENT FROM FREE POSITION:
 - 1. IF THE TOTAL PLUNGER TRAVEL IS LESS THAN THE CLICK DISTANCE, THE RELEASE POINT WILL BE AT A DISTANCE EQUAL TO THE INITIAL OPERATE POINT LESS THE BASIC DIFFERENTIAL TRAVEL (TYPICALLY .020 MAX)
 - 2. IF THE TOTAL PLUNGER TRAVEL IS GREATER THAN THE SUM OF THE PRETRAVEL AS MEASURED IN NOTE 13 AND THE CLICK DISTANCE, THEN THE RELEASE POINT IS EQUAL TO THE TOTAL PLUNGER TRAVEL MINUS THE CLICK DISTANCE AND BASIC DIFFERENTIAL TRAVEL
 - 15 2X GTAW OVERLAPPING TACK WELDS, .500 INCH IN LENGTH, NO CRACKS ALLOWED VIA VISUAL INSPECTION, MUST WITHSTAND 200 LB SEPARATION FORCE WITHOUT DAMAGE



ANSI Y14.5M-1982 APPLIES

THIS DRAWING COVERS A PROPRIETARY ITEM AND IS THE PROPERTY OF MICRO SWITCH, A DIVISION OF HONEYWELL. THIS DRAWING IS NOT TO BE COPIED OR USED WITHOUT THE APPROVAL OF MICRO SWITCH			THIRD ANGLE PROJECTION	
CHARACTERISTICS			SCALE NONE	
PRETRAVEL ----- .040 MAX			DO NOT SCALE PRINT	
OPERATING FORCE ----- 3 - 17 LBS			UNLESS OTHERWISE SPECIFIED TOLERANCES ARE	
TOTAL TRAVEL ----- .350 MIN			ONE PLACE (.0) ±.030	
CLICK DISTANCE ----- .275 - .325			TWO PLACE (.00) ±.015	
RELEASE FORCE ----- 2 LBS MIN			THREE PLACE (.000) ±.005	
ACTUATION FORCE ----- 17 LBS MAX			ANGLES ±	
			WEIGHT	
ELECTRICAL DATA			CONTACT ARRANGEMENT	
			1X S P D T	
			BASICS PER MS24547-5 (GOLD)	
			28 VDC	
			LOAD	
			SEA LEVEL 50,000 FT	
			RESISTIVE 1.0 1.0	
			INDUCTIVE 0.5 0.5	
			MOTOR	



Mouser Electronics

Authorized Distributor

Click to View Pricing, Inventory, Delivery & Lifecycle Information:

[Honeywell:](#)

[HS-1070](#)