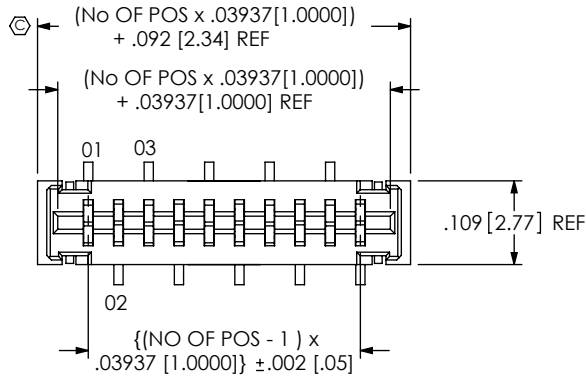
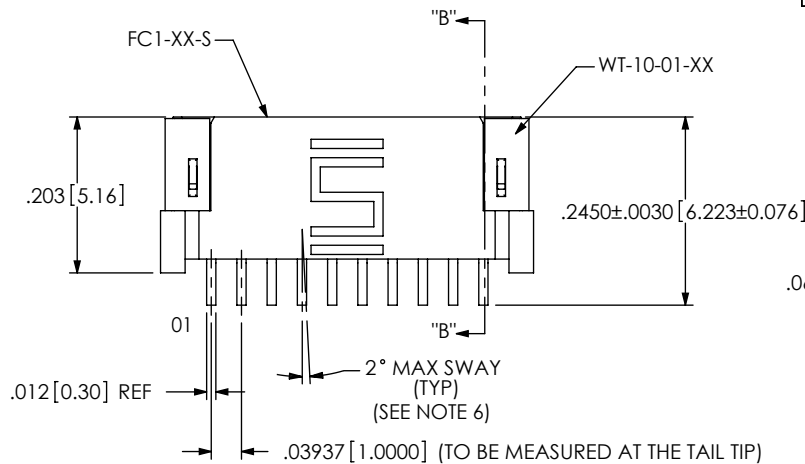


DO NOT
SCALE FROM
THIS PRINT



-01 / -L1 [VERTICAL LEAD STYLES]



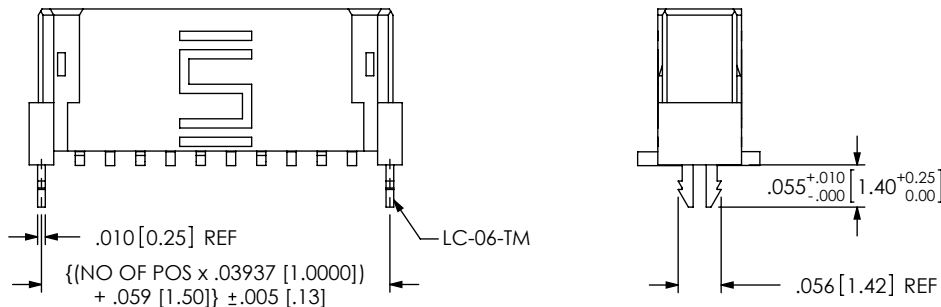
-02 / -L2 [HORIZONTAL LEAD STYLES]

FIG 1

FIG 3

-LC OPTION

SAME AS FIG. 2 EXCEPT AS SHOWN



FC1-XX-XX-XX-XX

No OF POSITIONS
-05 THRU -25
(SEE NOTE 8)

LEAD STYLE

- 01 VERTICAL (SEE FIG 2, C-136-01-X)
- 02 HORIZONTAL (SEE FIG. 1) (C-136-02-X)
- L1 VERTICAL (LOW INSERTION FORCE) (C-136-03-X)
- L2 HORIZONTAL (LOW INSERTION FORCE) (C-136-04-X)

OPTIONS

- WT: WELD TAB (LEAD STYLE -02 & -L2 ONLY)
- LC: LOCKING CLIP (SEE FIG 3) (LEAD STYLE -01 & -L1 ONLY) (SEE NOTE 9)
- K: POLYIMIDE FILM PAD (LEAD STYLE -01 & -L1 ONLY) (USE K-DOT-.157-.250-.005) (SEE NOTE 7)
- TR: TAPE & REEL

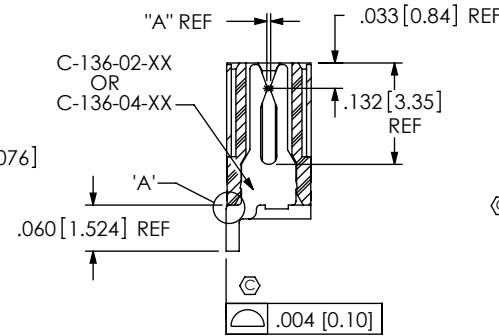
PLATING

- T: MATTE TIN CONTACT AND TAIL
- TM: MATTE TIN CONTACT AND TAIL

RECOMMENDED CABLE WIDTH

{(NO. OF POSITIONS x .03937 [1.0000]) + .040 [1.00] +/- .010 [.25] }

STYLE	"A"
-01	.005 [.13]
-02	.005 [.13]
-L1	.007 [.18]
-L2	.007 [.18]



SECTION "B"-B"

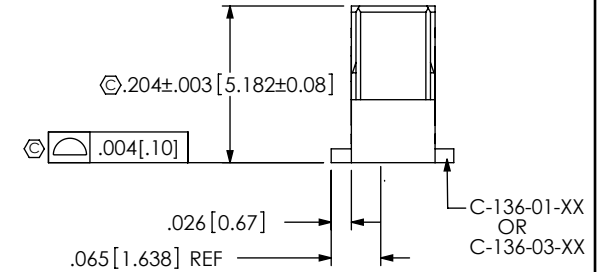
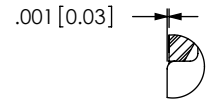


FIG 2

-01 /-L1: VERTICAL
DIFFERENT AS SHOWN, OTHERWISE SAME AS FIG 1



DETAIL 'A'
SCALE 8 : 1

NOTES:

1. Ⓢ REPRESENTS A CRITICAL DIMENSION.
2. NOTE DELETED
3. BURR ALLOWANCE: .0015[.038] MAX.
4. MAXIMUM CUT FLASH: .010 [.25].
5. MINIMUM PUSHOUT FORCE: .5 LB.
6. TAIL SWAY MUST BE IN SAME DIRECTION ON ALL CONTACT TAILS.
7. KAPTON PAD (-K) AVAILABLE ON ALL POSITIONS FOR LEAD STYLE -01 & -L1 (SEE FIG. 4).
8. -05 THRU -10 POSITIONS ARE 2 PARTS PER AND REQUIRE MULTI-CUTTING.
9. DUE TO THE HIGH AMOUNT OF INSERTION FORCE NEEDED, THE -LC OPTION IS NOT COMPATIBLE WITH AUTO PLACEMENT. SAMTEC RECOMMENDS MANUAL PLACEMENT FOR ALL ASSEMBLIES WITH THE -LC OPTION.

UNLESS OTHERWISE SPECIFIED,
DIMENSIONS ARE IN INCHES.

TOLERANCES ARE:

DECIMALS ANGLES
.XX: ±.01 [.3]
.XXX: ±.005 [.13]
.XXXX: ±.0020 [.508]

PROPRIETARY NOTE

THIS DOCUMENT CONTAINS INFORMATION
CONFIDENTIAL AND PROPRIETARY TO
SAMTEC, INC. AND SHALL NOT BE REPRODUCED
OR TRANSFERRED TO OTHER DOCUMENTS OR
DISCLOSED TO OTHERS OR USED FOR ANY
PURPOSE OTHER THAN THAT WHICH IT WAS
OBTAINED WITHOUT THE EXPRESSED WRITTEN
CONSENT OF SAMTEC, INC.

DO NOT SCALE DRAWING

SHEET SCALE: 4:1

HOUSING: BLACK LCP
CONTACT: PHOSPHOR BRONZE
WELD TABS: BRASS

F:\DWG\WISC\MKTG\FC1-XX-XX-XX-MKT.SLDDRW

samtec

520 PARK EAST BLVD, NEW ALBANY, IN 47150
PHONE: 812-944-6733 FAX: 812-948-5047
e-Mail: info@SAMTEC.com code: 55322

DESCRIPTION:

1MM SOCKET

DWG. NO.

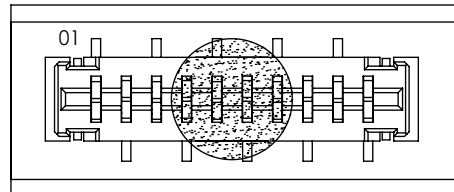
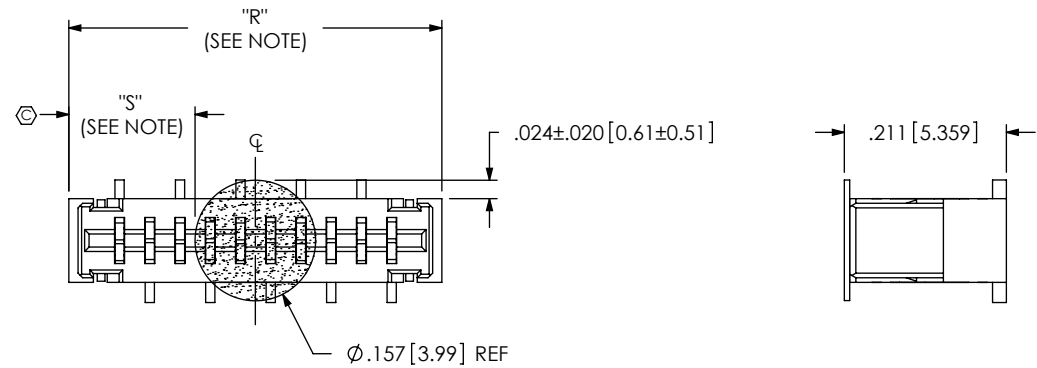
FC1-XX-XX-XX-XX

BY: G. PURVIS 3/1/1999

SHEET 1 OF 2

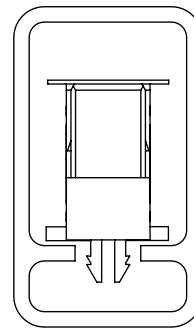
FIG 4
-K: POLYIMIDE FILM PAD
STYLE -01 & -L1 ONLY

NOTE: "R" = USED MEASURED DIMENSION (REF)
"S" = $\{("R" - .1575 [4.00]) / 2\} \pm .020 [.51]$

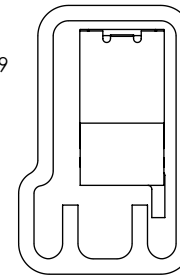


POSITION #01 TO BE LOCATED AS SHOWN
WITH POSITION #01 IN DIRECTION OF ARROW ON TUBE
(PKG. VIEW FOR -01/-L1 SHOWN)

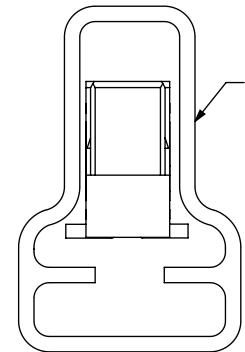
PACKAGING TUBE VIEWS



PT-1-24-11-09



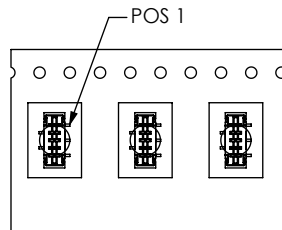
PT-1-24-07-09



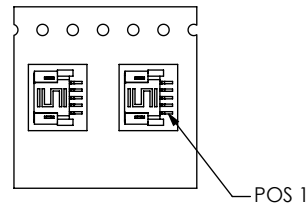
PT-1-24-05-15

TABLE 2

LEAD	OPTION	PACKAGING TUBE	PLUG
-X2	NONE, -WT	PT-1-24-07-09	TP-24-02
-X1	NONE	PT-1-24-05-15	TP-24
-X1	-K, -LC, -K-LC	PT-1-24-11-09	TP-09

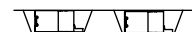
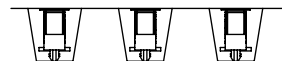


TAPE & REEL VIEW FOR VERTICAL PARTS



TAPE & REEL VIEW FOR HORIZONTAL PARTS

USER DIRECTION OF UNREELING
POCKETS NOT DETAILED



PROPRIETARY NOTE

THIS DOCUMENT CONTAINS INFORMATION
CONFIDENTIAL AND PROPRIETARY TO
SAMTEC, INC. AND SHALL NOT BE REPRODUCED
OR TRANSFERRED TO OTHER DOCUMENTS OR
DISCLOSED TO OTHERS OR USED FOR ANY
PURPOSE OTHER THAN THAT WHICH IT WAS
OBTAINED WITHOUT THE EXPRESSED WRITTEN
CONSENT OF SAMTEC, INC.

DO NOT SCALE DRAWING

SHEET SCALE: 4:1

samtec

520 PARK EAST BLVD, NEW ALBANY, IN 47150
PHONE: 812-944-6733 FAX: 812-948-5047
e-Mail: info@SAMTEC.com code: 55322

DESCRIPTION:

1MM SOCKET

DWG. NO.

FC1-XX-XX-XX-XX

BY: G. PURVIS 3/1/1999

SHEET 2 OF 2