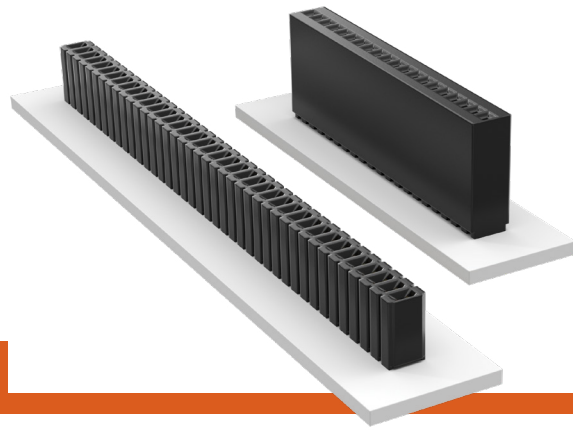


THROUGH-HOLE MICRO SOCKETS

(1.27 mm) .050" PITCH • SLM/SMS SERIES



SLM

Mates:
HTMS, TMS, MTMS, DWM,
HDWM, FTR, HMTMS

SMS

Mates:
HTMS, TMS, MTMS,
DWM, HDWM, FTR, TML,
ZML, HMTM

SPECIFICATIONS

Insulator Material:
SLM: Black Glass Filled Polyester
SMS: Black LCP

Contact Material:
Phosphor Bronze

Plating:
Au or Sn over
50 μ" (1.27 μm) Ni

Operating Temp Range:
-55 °C to +125 °C with Gold
-55 °C to +105 °C with Tin

Current Rating (SLM/TMS):
5.2 A per pin
(2 pins powered)

Current Rating (SMS/TMS):
5.0 A per pin
(2 pins powered)

Voltage Rating:
SLM: 238 VAC/336 VDC
SMS: 300 VAC/424 VDC

Insertion Depth:
SLM: (2.03 mm) .080"
to (3.05 mm) .120"
SMS: (3.43 mm) .135" to
(6.35 mm) .250" with
(0.38 mm) .015" wiper

PROCESSING

Lead-Free Solderable:
SLM: No, Lead Wave Only
SMS: Yes

ALSO AVAILABLE

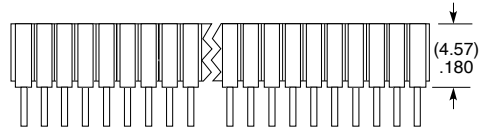
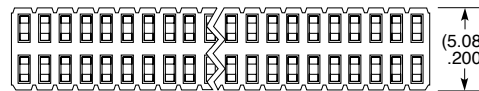
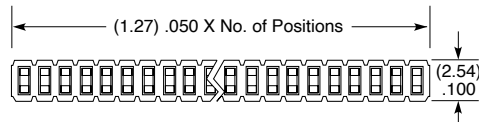
Contact Samtec

Other Platings

Note:
Some lengths, styles and
options are non-standard,
non-returnable.



01 thru 50



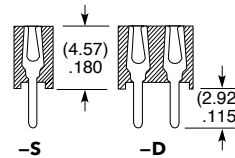
-F
= Gold flash on contact,
Matte Tin on tail

-L
= 10 μ" (0.25 μm) Gold on contact,
Matte Tin on tail

-G
= 20 μ" (0.51 μm) Gold on contact,
Gold flash on balance

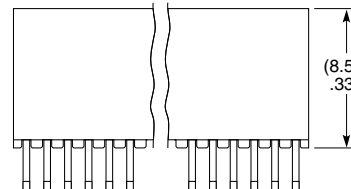
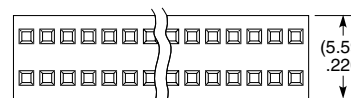
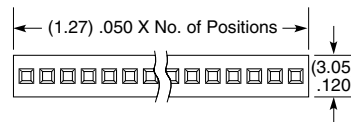
-S
= Single
Row

-D
= Double
Row



01 thru 50

Specify
LEAD
STYLE
from
chart



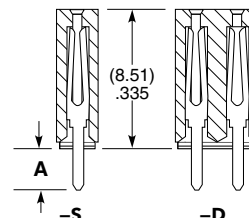
-F
= Gold flash on contact,
Matte Tin on tail

-L
= 10 μ" (0.25 μm) Gold on contact,
Matte Tin on tail

-G
= 20 μ" (0.51 μm) Gold on contact,
Gold flash on balance

-S
= Single
Row

-D
= Double
Row



LEAD STYLE	A
-01	(2.54) .100
-02	(4.83) .190