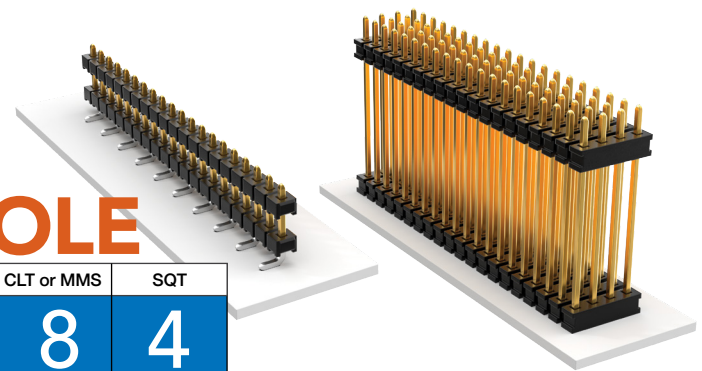


SMT & THROUGH-HOLE BOARD STACKERS

(2.00 mm) .0787" PITCH • TW SERIES

CLT or MMS	SQT
8	4
G b p s	G b p s



TW

Board Mates:

CLT, SQT, SQW, ESQT, TLE, SMM, MMS

Cable Mates:

TCSD

SPECIFICATIONS

Insulator Material:

Black Liquid Crystal Polymer

Terminal Material:

Phosphor Bronze

Plating:

Sn or Au over 50 μ" (1.27 μm) Ni

Operating Temp Range:

-55 °C to +105 °C with Tin;
-55 °C to +125 °C with Gold

Current Rating:

3.9 A per pin (2 pins powered)

Voltage Rating:

350 VAC/495 VDC

PROCESSING

Lead-Free Solderable:

Yes

SMT Lead Coplanarity:

(0.15 mm) .006" max*
*(.004" stencil solution may be available; contact ipg@samtec.com)

TW	NO. PINS PER ROW	LEAD STYLE	PLATING OPTION	ROW OPTION	STACKER HEIGHT	SM	OTHER OPTION
----	------------------	------------	----------------	------------	----------------	----	--------------

02 thru 36

Specify LEAD STYLE from chart

-F = Gold flash on post, Matte Tin on tail

-L = 10 μ" (0.25 μm) Gold on post, Matte Tin on tail

-T = Matte Tin

-S = Single Row

-D = Double Row

-"XXX"
= Stacker Height in inches (0.13 mm) .005" increments

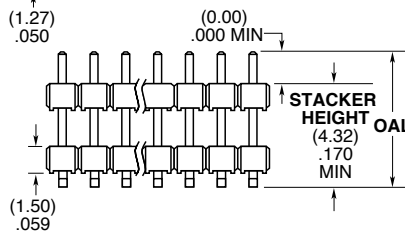
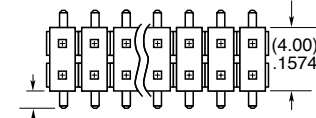
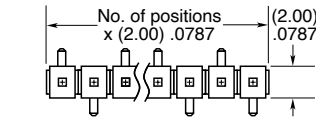
Example: -250 = (6.35 mm) .250"

-"XXX"
= Polarized Position

-A = Alignment Pin (Metal or plastic at Samtec discretion) (4.83 mm) .190" min. board space (-D only)

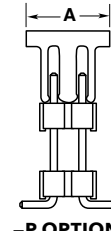
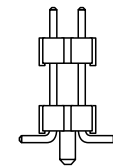
-P = Pick & Place Pad (1.91 mm) .075" min. post height (04-36 only)

-"X"R
Specify "T" for Tape & Reel
Specify "F" for Full Reel Tape & Reel (must order max. quantity per reel; contact Samtec for quantity breaks)
(-07 lead style N/A)
(-06 lead style with -P option N/A as standard)



ROW OPTION	A
-S	(5.08) .200
-D	(6.35) .250

LEAD STYLE	OAL
-02	(7.85) .309
-03	(11.86) .467
-04	(12.37) .487
-06	(15.37) .605
-07	(17.35) .683
-09	(9.86) .388



TW	NO. PINS PER ROW	LEAD STYLE	PLATING OPTION	ROW OPTION	STACKER HEIGHT	TAIL SPEC
----	------------------	------------	----------------	------------	----------------	-----------

02 thru 50

Specify LEAD STYLE from chart

-F = Gold flash on post, Matte Tin on tail

-L = 10 μ" (0.25 μm) Gold on post, Matte Tin on tail

-T = Matte Tin

-S = Single Row

-D = Double Row

-T = Triple Row

-Q = Four Row

-5 = Five Row

-6 = Six Row

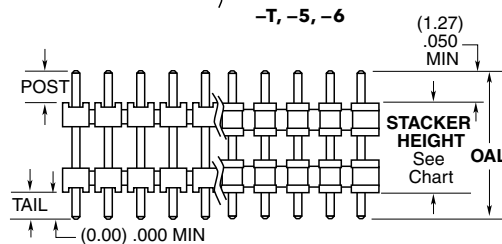
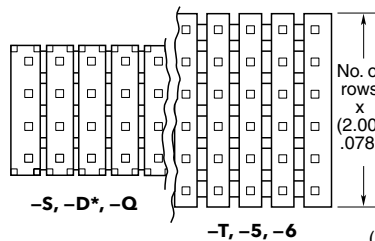
-"XXX"
= Stacker Height in inches (0.13 mm) .005" increments

LEAD STYLE	OAL
-01	(8.20) .323
-02	(9.60) .377
-03	(13.60) .535
-04	(14.10) .555
-05	(15.10) .594
-06	(17.10) .673
-07	(19.10) .751
-08*	(21.10) .830
-09	(11.60) .456
-10	(15.60) .614
-11	(10.08) .397
-12*	(28.19) 1.110

-"XXX"
= Tail Length in inches (0.13 mm) .005" increments

Example: -150 = (3.81 mm) .150"

-"XXX"
= Polarized Position (Specify position to be removed)



ROW OPTION	STACKER HEIGHT
-S, -D*, -Q	(3.05) .120 MIN
-T, -5, -6	(4.06) .160 MIN

*-D with stacker height greater than (4.06 mm) .160" will not have standoffs.

*Style -08 & -12 = S & D only

ALSO AVAILABLE

Contact Samtec

Other Platings

End shrouds with or without guide post

Notes:

For added mechanical stability, Samtec recommends mechanical board spacers be used in applications with gold or selective gold plated connectors. Contact ipg@samtec.com for more information.

This Series is non-standard, non-returnable.