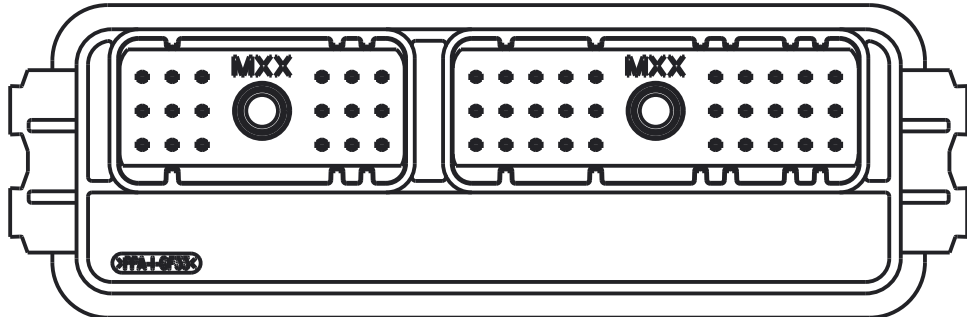
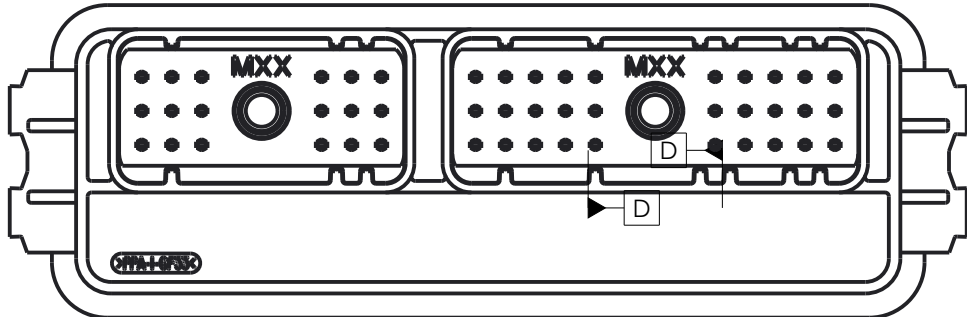
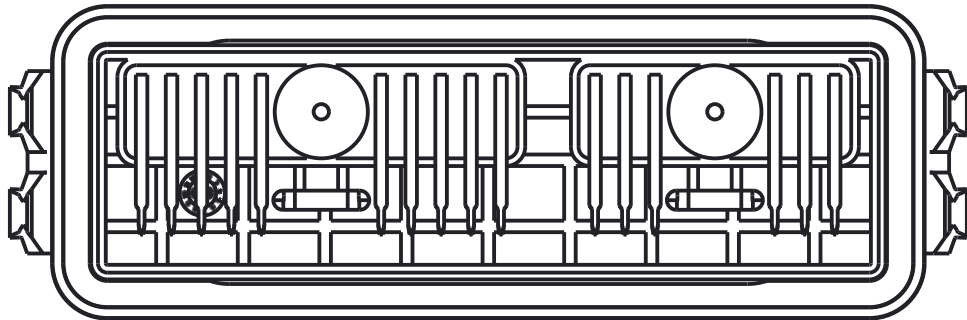
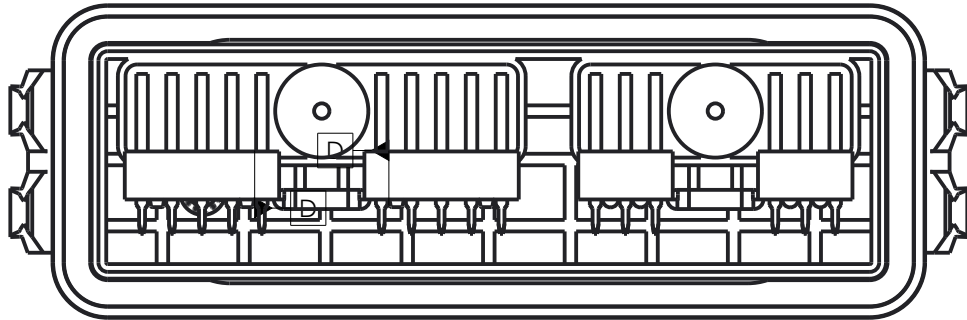
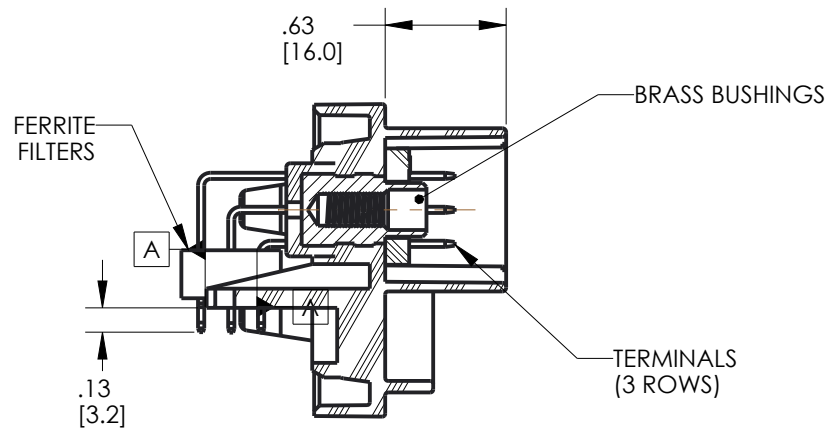
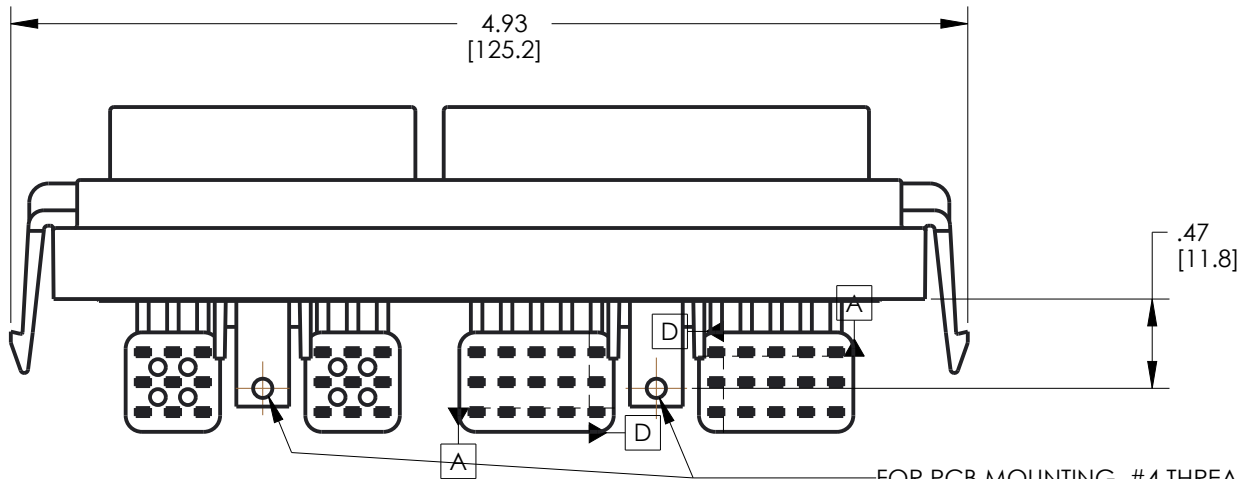
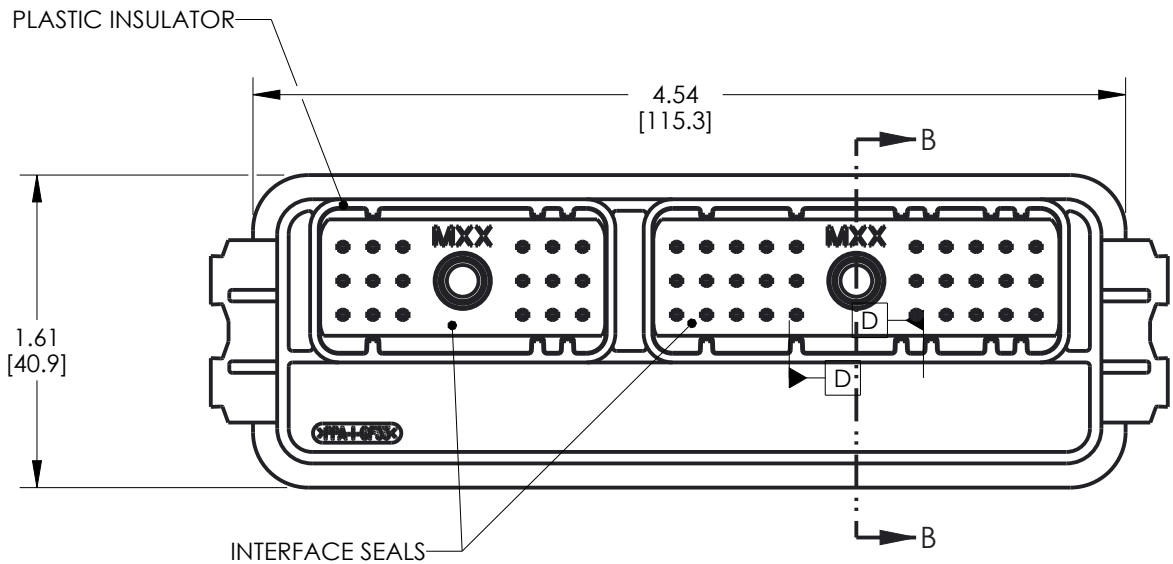
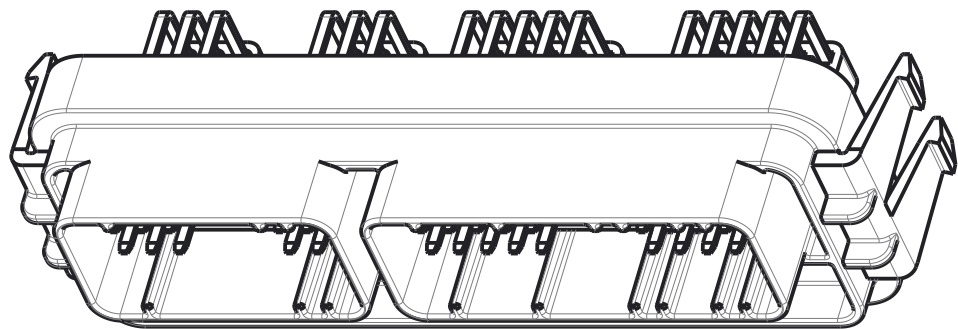


8	7	6	5	4	3	2	1			
CINCH PART NUMBER MATRIX							DRAWING REVISIONS (RELEASE DATE ON FILE)			
							REV	DOCUMENT	APP	APPROVAL DATE
							C	CO 3274	KR	7/18/16
P/N: 5810148009					P/N: 5810148010					
48-WAY HEADER ASSEMBLY WITHOUT FERRITE FILTERS					48-WAY HEADER ASSEMBLY WITH FERRITE FILTERS					
										
										
MATES WITH CINCH HARNESS CONNECTORS P/N: 5810118023 (18-WAY) AND 5810130029 (30-WAY)										
NOTES: 1. ALL DIMENSIONS ARE IN INCHES; DIMENSIONS INSIDE [.XX] ARE IN mm, AS REFERENCE ONLY 2. MATERIALS: INTERFACE SEALS: SILICONE RUBBER, COLOR BLUE INSULATOR: 30% GLASS FILLED POLYMER, COLOR BLACK BUSHINGS: BRASS ALLOY, UNPLATED 10-24 UNC THREAD TERMINAL BLADES: 1.5 mm BRASS WITH TIN OVER NICKEL PLATING FILTERS: FERRITE BLOCKS 3. ALL HEADERS ARE REFLOW OR WAVE SOLDERING PROCESS, ROHS COMPLIANT 4. SUGGESTED PCB THICKNESS: .062 [1.57] 5. IF USING FERRITE FILTER VERSION, TRACES SHOULD BE AVOIDED UNDER THE FERRITE SPACER FEET. SEE "PCB TOP SIDE PIN AREA WITH FERRITES DETAIL" - PAGE 3. 6. MATES WITH CINCH SHS PUSH-TO-SEAT HARNESS CONNECTORS (SEE TABLE ABOVE) 7. TORQUE MATING CONNECTOR SCREW TO 15 - 20 IN*LBS [1.70 - 2.26 N*m]										
<div>UNITS</div> <div>ENGLISH INCHES</div> <div>DO NOT SCALE DRAWING</div> <div>DESIGN ENGINEER</div> <div>A. ECKHART</div> <div>DATE</div> <div>4/3/09</div> <div>CONFIDENTIAL</div> <div>THIS DOCUMENT IS THE PROPERTY OF CINCH. NEITHER THIS DOCUMENT NOR ANY OF THE INFORMATION CONTAINED IN IT MAY BE DUPLICATED OR DISCLOSED WITHOUT PRIOR WRITTEN CONSENT OF CINCH. ©COPYRIGHT 2009 CINCH</div>					<div>PRO/E</div> <div>APPROVALS ON FILE</div>		<div>CINCH</div> <div>48-WAY HEADERS MODICE ME</div> <div>SEE NOTES</div> <div>CAD FILE NUMBER</div> <div>5810148009S</div> <div>CAGE IDENT NO.</div> <div>71785</div> <div>SIZE</div> <div>B</div> <div>DRAWING NUMBER</div> <div>5810148009S</div> <div>SCALE</div> <div>1:1</div> <div>CONTROL SPEC NUMBER</div> <div>A14926</div> <div>PROJECT NUMBER</div> <div>A14926</div> <div>SHEET 1 OF 3</div>			
8	7	6	5	4	3	2	1			



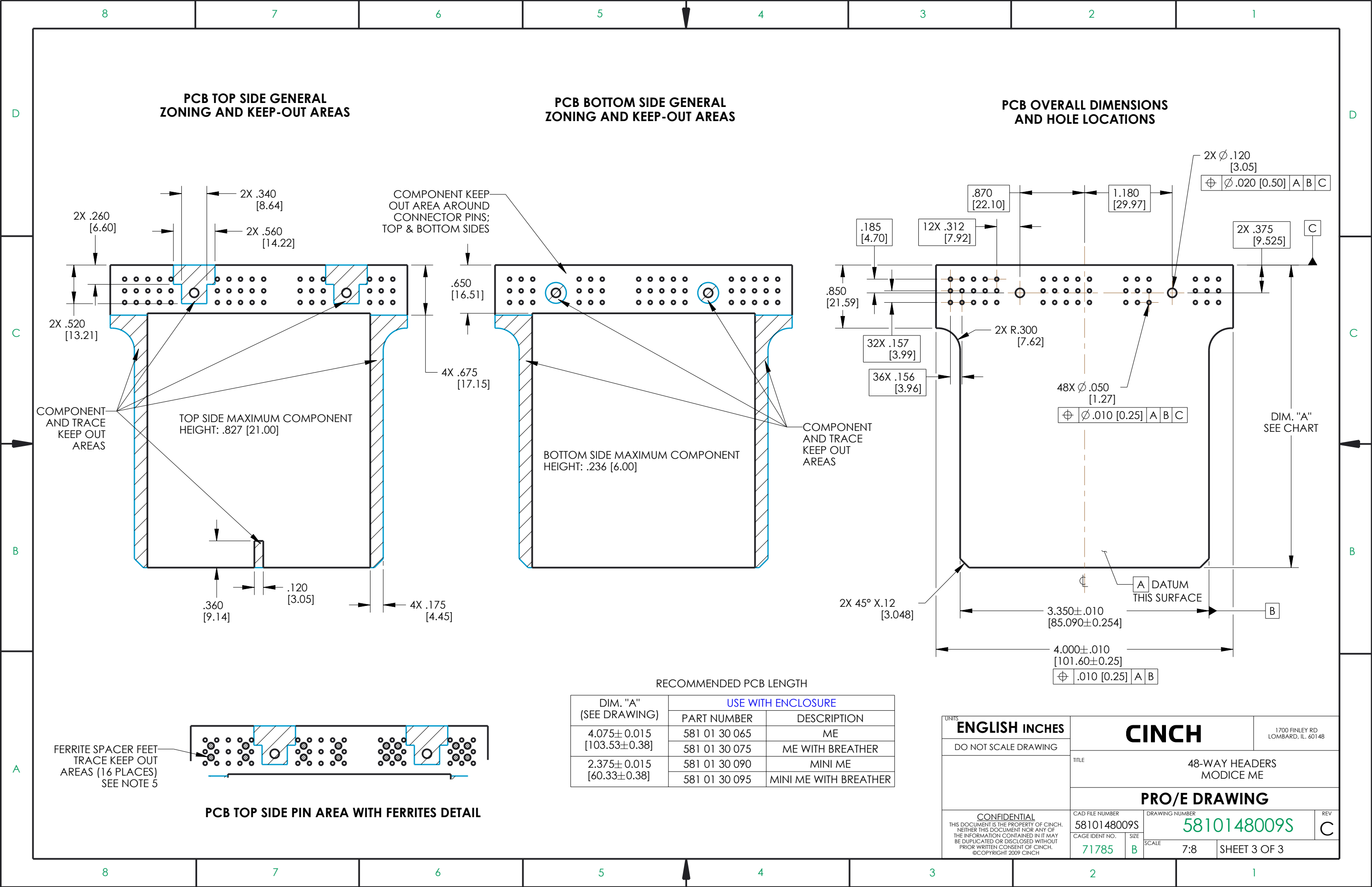
SECTION B-B



CINCH P/N: 5810148010 SHOWN
(HEADER WITH FILTERS)

FOR PCB MOUNTING, #4 THREAD CUTTING
SCREWS (TYPE 23 OR SIMILAR) ARE RECOMMENDED;
TORQUE TO 2-3 IN*LBS [0.23-0.34Nm]

UNITS		CINCH		1700 FINLEY RD LOMBARD, IL. 60148		
ENGLISH INCHES						
DO NOT SCALE DRAWING		TITLE 48-WAY HEADERS MODICE ME				
CONFIDENTIAL THIS DOCUMENT IS THE PROPERTY OF CINCH. NEITHER THIS DOCUMENT NOR ANY OF THE INFORMATION CONTAINED IN IT MAY BE DUPLICATED OR DISCLOSED WITHOUT PRIOR WRITTEN CONSENT OF CINCH. ©COPYRIGHT 2009 CINCH		PRO/E DRAWING				
		CAD FILE NUMBER 5810148009S		DRAWING NUMBER 5810148009S		REV C
		CAGE IDENT NO. 71785	SIZE B	SCALE 1:1	SHEET 2 OF 3	



PCB TOP SIDE GENERAL ZONING AND KEEP-OUT AREAS

PCB BOTTOM SIDE GENERAL ZONING AND KEEP-OUT AREAS

PCB OVERALL DIMENSIONS AND HOLE LOCATIONS

RECOMMENDED PCB LENGTH

DIM. "A" (SEE DRAWING)	USE WITH ENCLOSURE	
	PART NUMBER	DESCRIPTION
4.075±0.015 [103.53±0.38]	581 01 30 065	ME
	581 01 30 075	ME WITH BREATHER
2.375±0.015 [60.33±0.38]	581 01 30 090	MINI ME
	581 01 30 095	MINI ME WITH BREATHER

UNITS							
ENGLISH INCHES		CINCH				1700 FINLEY RD LOMBARD, IL. 60148	
DO NOT SCALE DRAWING		TITLE 48-WAY HEADERS MODICE ME					
CONFIDENTIAL THIS DOCUMENT IS THE PROPERTY OF CINCH. NEITHER THIS DOCUMENT NOR ANY OF THE INFORMATION CONTAINED IN IT MAY BE DUPLICATED OR DISCLOSED WITHOUT PRIOR WRITTEN CONSENT OF CINCH. ©COPYRIGHT 2009 CINCH		PRO/E DRAWING					
		CAD FILE NUMBER 5810148009S		DRAWING NUMBER 5810148009S			REV C
		CAGE IDENT NO. 71785	SIZE B	SCALE 7:8		SHEET 3 OF 3	