

# ENGINEERING DATA SHEET

## SERIES SF402-1F

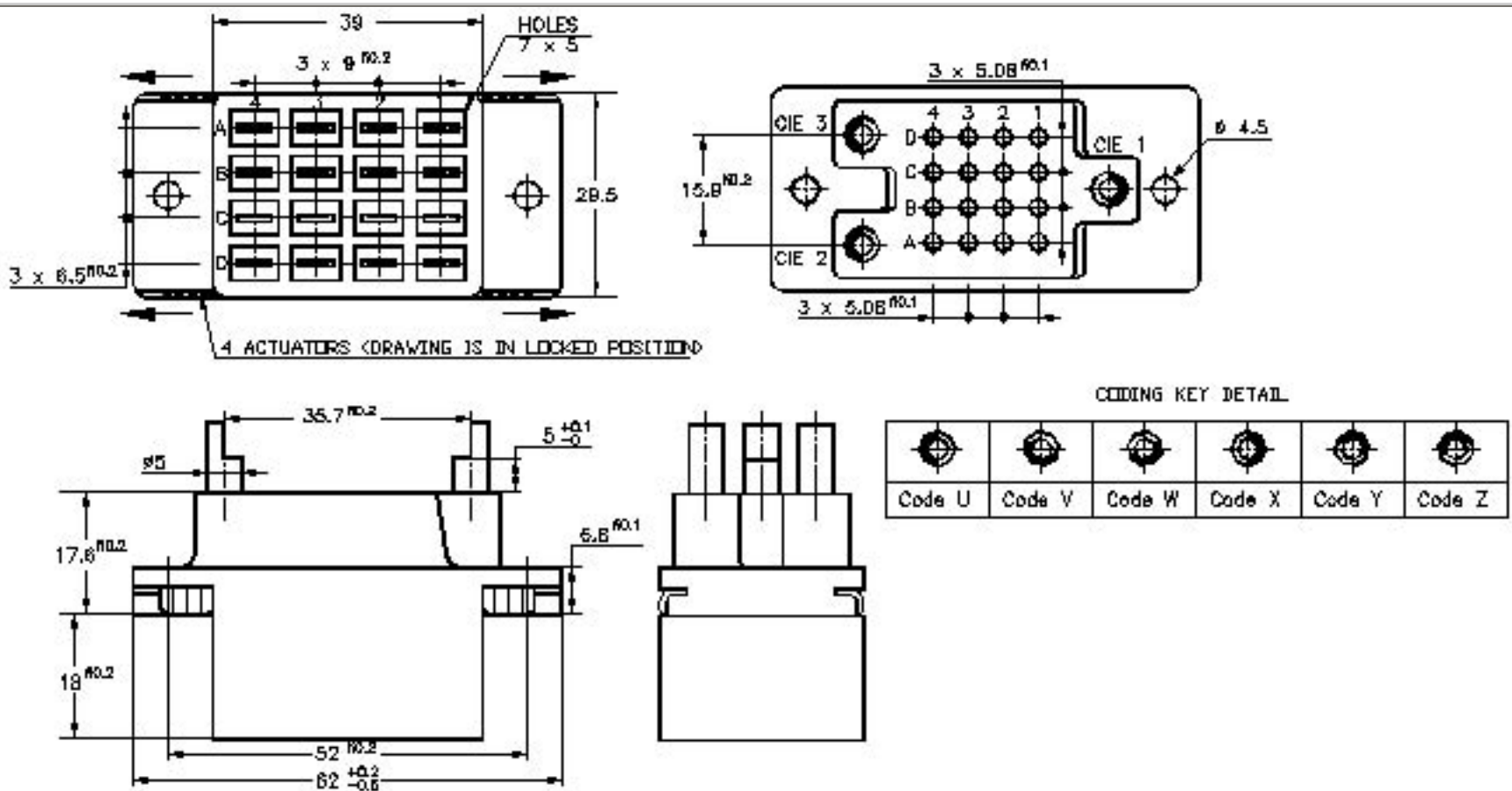
### RAILWAY SOCKET

### BASE - H MOUNTING STYLE



BASIC SOCKET SERIES DESIGNATION FOR:

**Series F472, FD472, THLOR, THLM, THLC, THLAO**



## GENERAL CHARACTERISTICS

Base for F472 relay series with H mounting style. Foolproof mounting of the relay ensured by 3 keys according to NF F 62-002-2 FF n°8	
Connections by 5 mm tabs according to ST363C	
Contact Resistance	<5 mΩ
Maximum Current	15 Amps
Dielectric Strength	2625 Vrms / 50 HZ
Insulation Resistance	> 1000 MΩ at 100 Vdc
Weight	70 grams



Featuring **LEACH®** power and control solutions  
[www.esterline.com](http://www.esterline.com)

**AMERICAS**  
 6900 Orangethorpe Ave.  
 P.O. Box 5032  
 Buena Park, CA 90622

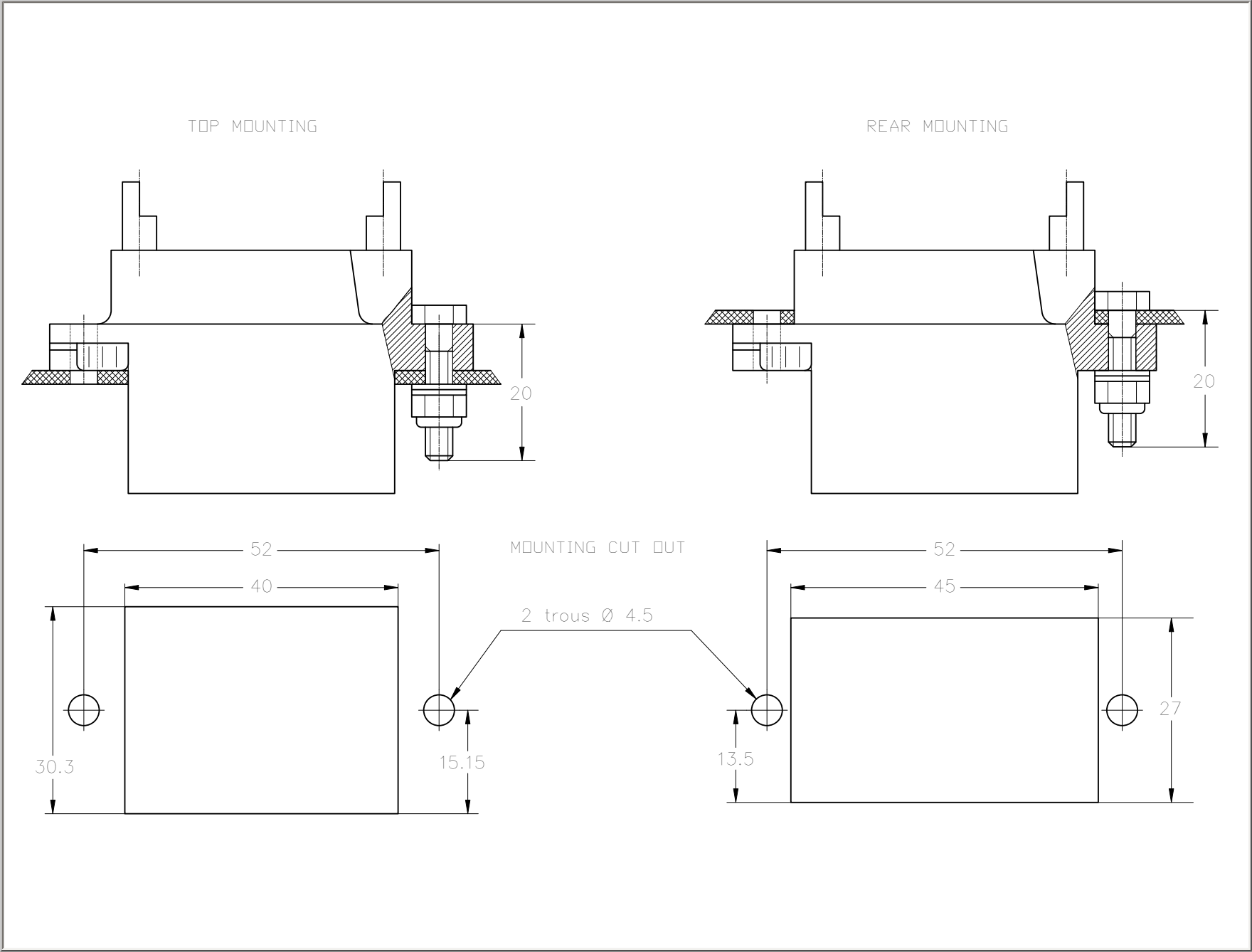
Tel: (01) 714-736-7599  
 Fax: (01) 714-670-1145

**EUROPE**  
 2 Rue Goethe  
 57430 Sarrelbe  
 France

Tel: (33) 3 87 97 31 01  
 Fax: (33) 3 87 97 96 86

**ASIA**  
 Units 602-603 6/F Lakeside 1  
 No.8 Science Park West Avenue  
 Phase Two, Hong Kong Science Park  
 Pak Shek Kok, Tai Po, N.T.  
 Hong Kong  
 Tel: (852) 2 191 3830  
 Fax: (852) 2 389 5803

Data sheets are for initial product selection and comparison. Contact Esterline Power Systems prior to choosing a component.



- Hardware:** (supplied with socket)
- 2 studs M4 - 2 self-locking nuts M4
  - 2 flat washers - 2 crinkle washers.