

4

3

2

1

THIS DRAWING IS UNPUBLISHED.

RELEASED FOR PUBLICATION

© COPYRIGHT

ALL RIGHTS RESERVED.

LOC

DIST


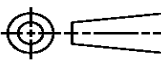
REVISIONS


P	LTR	DESCRIPTION	DATE	DWN	APVD
	F1	ECR-14-002253	20FEB2014	GK	HMR

REPLACED BY OCEAN STYLE APPLICATOR PART
NUMBER 2150323-1

FOR REPLACEMENT PARTS FOR APPLICATOR 1339534
REFER TO ADDITIONAL PAGE(S). SPARE PARTS KIT (IF LISTED)
WILL REMAIN AVAILABLE.

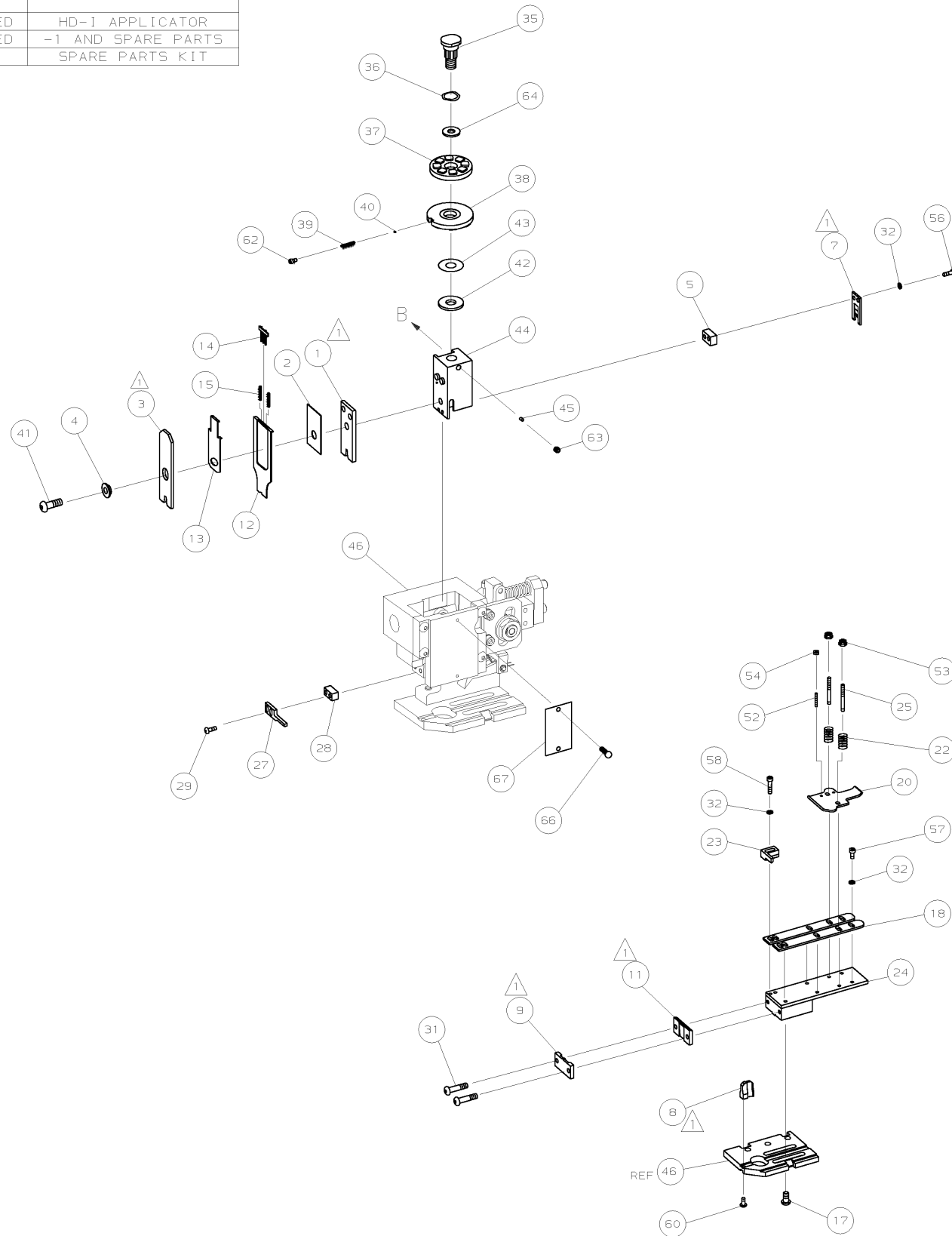
THE REPLACEMENT OCEAN STYLE APPLICATOR HAS THE
SAME TERMINATOR/PRESS INTERFACE AS APPLICATOR
1339534

THIS DRAWING IS A CONTROLLED DOCUMENT.		DWN	GOPALAKRISHNA HV		 TE Connectivity			
DIMENSIONS:		CHK	RAGHAVENDRA					
		TOLERANCES UNLESS OTHERWISE SPECIFIED:		APVD		RAGHAVENDRA		
		0 PLC ±		NAME		END FEED HD-I APPLICATOR		
		1 PLC ±		PRODUCT SPEC				
2 PLC ±		APPLICATION SPEC						
3 PLC ±				SIZE		CAGE CODE	DRAWING NO	RESTRICTED TO
4 PLC ±				A 3			©- 1339534	
ANGLES ±								
FINISH				WEIGHT				
MATERIAL				CUSTOMER DRAWING		SCALE		SHEET 1 OF 2 REV F1

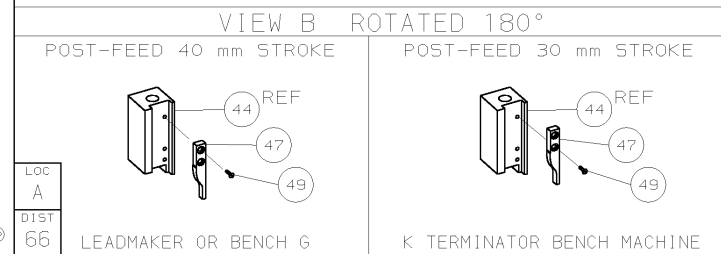
 1. RECOMMENDED SPARE PARTS.

2. GREASE RAM, CAM, CAM FOLLOWER AND FEED ROD LIGHTLY.

3. LUBRICATE DAILY PER THE APPLICATOR INSTRUCTION SHEET SUPPLIED WITH THE APPLICATOR.



					73
-	1	1	1339534	PRINT, APPLICATOR LOG SHEET	72
-	1	1	1338705-2	DOCUMENTATION PACKAGE	71
					70
					69
					68
-	1	1	461264-1	PLATE, IDENTIFICATION	67
-	2	2	21017-2	SCR,DRIVE(2X.19) ID PLATE	66
					65
-	1	1	986950-1	WASHER, FLAT PRECISION	64
-	1	1	3-18031-0	SCR,SKT SET(M6X6)RAM	63
-	1	1	18023-9	SCR,SKT CAP(M4X6)CP D5C	62
					61
-	1	1	18024-7	SCR,BHC(M4X10)ANVIL	60
					59
-	2	2	1-18023-3	SCR,SHC(M4X16)HOLD DOWN	58
-	5	5	1-18023-0	SCR,SHC(M4X8)STRIP GUIDE	57
-	2	2	1-18023-2	SCR,SHC(M4X12)SLUG BLADE	56
					55
-	2	2	18029-1	NUT,HEX(M3)DRAG	54
-	2	2	986965-1	NUT,HEX SL(M4)DRAG STUD	53
-	2	2	2-18032-2	SCR,SKT SET(M3X10)DRAG	52
					51
					50
-	1	1	18024-3	SCR,BHC(M3X10)CAM	49
					48
-	1	1	1338676-1	CAM, POST-FEED 30 & 40 mm ST	47
-	1	1	1338662-2	APPLICATOR, BASIC (SUBASSY)	46
-	1	1	690191-1	PLUG, NYLON	45
-	1	1	1320998-1	RAM	44
-	1	1	690125-1	WASHER, LAMINATED	43
-	1	1	1-690124-0	WASHER, RAM	42
-	1	1	2-18024-6	SCREW,BHC(M8X25)CRIMPER	41
-	1	1	23241-1	BALL, STEEL	40
-	1	1	2-22278-7	SPRING, COMPRESSION	39
-	1	1	1-1320922-1	DISC, INSULATION	38
-	1	1	354777-1	WIRE DISC, PLASTIC	37
-	1	1	22480-5	WASHER, SPRING	36
-	1	1	690212-1	POST, RAM	35
					34
					33
-	9	9	18025-2	WASHER,LOCK(M4)SHEAR BL	32
-	2	2	1-18024-0	SCR,BHC(M4X20)SHEAR PL	31
					30
-	2	2	18024-8	SCR,BHC(M4X12)STRIPPER	29
-	1	1	3-690451-7	SPACER, STRIPPER	28
-	1	1	240639-1	STRIPPER	27
					26
-	2	2	1320906-1	DRAG, STUD	25
-	1	1	1320995-1	STRIP GUIDE	24
-	1	1	240825-2	PLATE, STRIP HOLD DOWN	23
-	2	2	4-22281-1	SPRING, DRAG	22
					21
-	1	1	1338665-1	DRAG, STOCK	20
					19
-	2	2	1338663-6	GUIDE, LOWER STRIP	18
-	4	4	1-18024-8	SCR,BHC(M6X12)STRIP GD PL	17
					16
-	3	3	2-23147-2	SPACER, COMPRESSION	15
-	1	1	1424350-1	HOLDER, PIN, WIRED	14
-	1	1	1490524-2	SPACE WIRE DEP	13
-	1	1	1490525-2	WIRE, DEPRESSOR	12
-	1	1	240644-1	PLATE, REAR SHEAR	11
					10
-	1	1	690482-5	PLATE, FRONT SHEAR	9
1	2	1	1333222-2	ANVIL	8
-	1	1	690474-5	BLADE, SLUG	7
					6
-	1	1	1-240641-8	SPACER, SLUG BLADE	5
-	1	1	238009-1	SPACER, BLOCK CRIMPER	4
1	2	1	6-456134-7	CRIMPER, INSULATION	3
-	1	1	455888-6	SPACER, CRIMPER	2
1	2	1	456411-6	CRIMPER, WIRE	1



						DIMENSIONS: mm (INCHES)	MATL	-	HT TR	-	FIN	-
F	0150-0068-05	BH	JAN05			DO NOT SCALE PRINT.	DR	N.CLIFFORD	OBJANO1 APP	OBJANO1 F.BACKHURST	AMP	
E	ECN 0150-0368-02	TE	3-02			TOLERANCES UNLESS OTHERWISE SPECIFIED:	CHK	-	REL	-	AMP Incorporated Harrisburg, PA 17105-3608	
D	ECN 0150-0970-01	TE	10-01			1 PLC DEC ±-						
C	EC 0150-0647-01	CMR	JUNE01			2 PLC DEC ±-						
E	EC 0150-0146-01	CMR	FEB01			3 PLC DEC ±-						
A	EX EXPRESS 0150A-0148-01	CMR	FEB01			ANGLES SURF. TEXTURE.	NAME	END FEED HD-I APPLICATOR				MACHINE REF
OI	ADDED CRIMP HEIGHT INFO.	MC	JAN01			REMOVE BURRS, BREAK SHARP EDGES RO.38 MAX	SCALE	-	D	DWG NO	1339534	H-D-I APPL
P F	LTR REVISION RECORD	APP	DATE				SHEET	1	OF	1	REV	F
	3					CAGE CODE 00779	CUSTOMER AND ASSEMBLY DRAWING					RESTRICTED TO -