

DO NOT
SCALE FROM
THIS PRINT

**DESIGNED & DIMENSIONED
IN MILLIMETERS[INCHES]**

UEC5-XXX-1-X-D-RA-X-A

NO OF POSITIONS
-019, *-025, *-038, *-050
(PER ROW)

LEAD STYLE
-1:

PLATING SPECIFICATION —
-H: 30μ" GOLD IN CONTACT
AREA, GOLD FLASH ON TAIL
(USE C-409-01-H, C-410-01-H)

ROW SPECIFICATION
-D: DOUBLE ROW

(* = NOT TOOLED)

OPTION
-A: ALIGNMENT PIN

WELD TAB STYLE
-1: THRU HOLE
-2: SURFACE MOUNT

- RIGHT ANGLE
- RA: RIGHT ANGLE

MULTIPLE PATENTS PENDING

THIS IS THE SECOND GENERATION
DESIGN OF THE UEC5 (RUGGEDIZED).
SEE DRAWING No ASP-180864-01 FOR THE
ORIGINAL DESIGN (ONLY AVAILABLE
TO EXISTING CUSTOMERS)

FIG 1

UEC5-019-1-X-D-RA-1-A SHOWN
(SOME CENTER FEATURES REMOVED FOR CLARITY)
(PP NOT SHOWN FOR CLARITY)

TABLE

No. OF POS	"A"
-019	11.25 [0.443]
*-025	14.25 [0.561]
*-038	22.00 [0.866]
*-050	28.00 [1.102]

(* = NOT TOOLED)

TABLE 1

No Of POS	"B"	"C"	"D"	"E"	"F"	"G"	"H"
-019	8.72 [0.343]	9.00 [0.354]	10.00 [0.394]	9.00 [0.354]	9.00 [0.354]	10.45 [0.411]	9.45 [0.372]
*-025	11.72 [0.461]	12.00 [0.472]	13.00 [0.512]	12.00 [0.472]	12.00 [0.472]	13.45 [0.530]	12.45 [0.490]
*-038	8.72 [0.343]	19.75 [0.778]	N/A	19.75 [0.778]	19.75 [0.778]	21.20 [0.835]	20.20 [0.795]
*-050	11.72 [0.461]	25.75 [1.014]	N/A	25.75 [1.014]	25.75 [1.014]	27.20 [1.071]	26.20 [1.031]

(* = NOT TOOLED)

UNLESS OTHERWISE SPECIFIED,
DIMENSIONS ARE IN MILLIMETERS.

TOLERANCES ARE:

DECIMALS

X.X: ± 0.3 [.01]

X.XX: ± 0.13 [.005]

X.XXX: ± 0.051 [.0020]

PROPRIETARY NOT

THIS DOCUMENT CONTAINS CONFIDENTIAL AND PROPRIETARY INFORMATION AND ALL DESIGN, MANUFACTURING, REPRODUCTION, USE, PATENT RIGHTS AND SALES RIGHTS ARE EXPRESSLY RESERVED BY SAMTEC, INC. THIS DOCUMENT SHALL NOT BE DISCLOSED, IN WHOLE OR PART, TO ANY UNAUTHORIZED PERSON OR ENTITY NOR REPRODUCED, TRANSFERRED OR INCORPORATED IN ANY OTHER PROJECT IN ANY MANNER WITHOUT THE EXPRESS WRITTEN CONSENT OF SAMTEC, INC.

MATERIAL: DO NOT SCALE DRAWING
INSULATOR: LCP, COLOR: BLACK
CONTACT: BeCu

SHEET SCALE: 6:1



520 PARK EAST BLVD, NEW ALBANY, IN 47150
PHONE: 812-944-6733 FAX: 812-948-5047
e-Mail info@SAMTEC.com code 55322

DESCRIPTION:


0.5MM EDGE RATE SOCKET ASSEMBLY

DWG. NO.

UEC5-XXX-1-X-D-RA-X-A

BY: KNOWLDEN 9/10/2013 SHEET 1 OF 5

NOTES:

1.  REPRESENTS A CRITICAL DIMENSION.
2. MINIMUM PUSHOUT FORCE: 1.6N[0.36 LB].
3. TAPE & REEL IS STANDARD PACKAGING
4. FOR QUANTITIES UP TO 49 PIECES, NO LEADER, TRAILER OR EIA-481 REEL WILL BE SUPPLIED.
FOR QUANTITIES 50-124, NO LEADER OR TRAILER WILL BE SUPPLIED.
5. USE INSPECTION FIXTURE, SAMTEC P/N AT-2450-800, WHEN INSPECTING SOLDER TAIL CRITICAL DIMENSIONS.
6. K-DOT PROVIDED AS STANDARD.

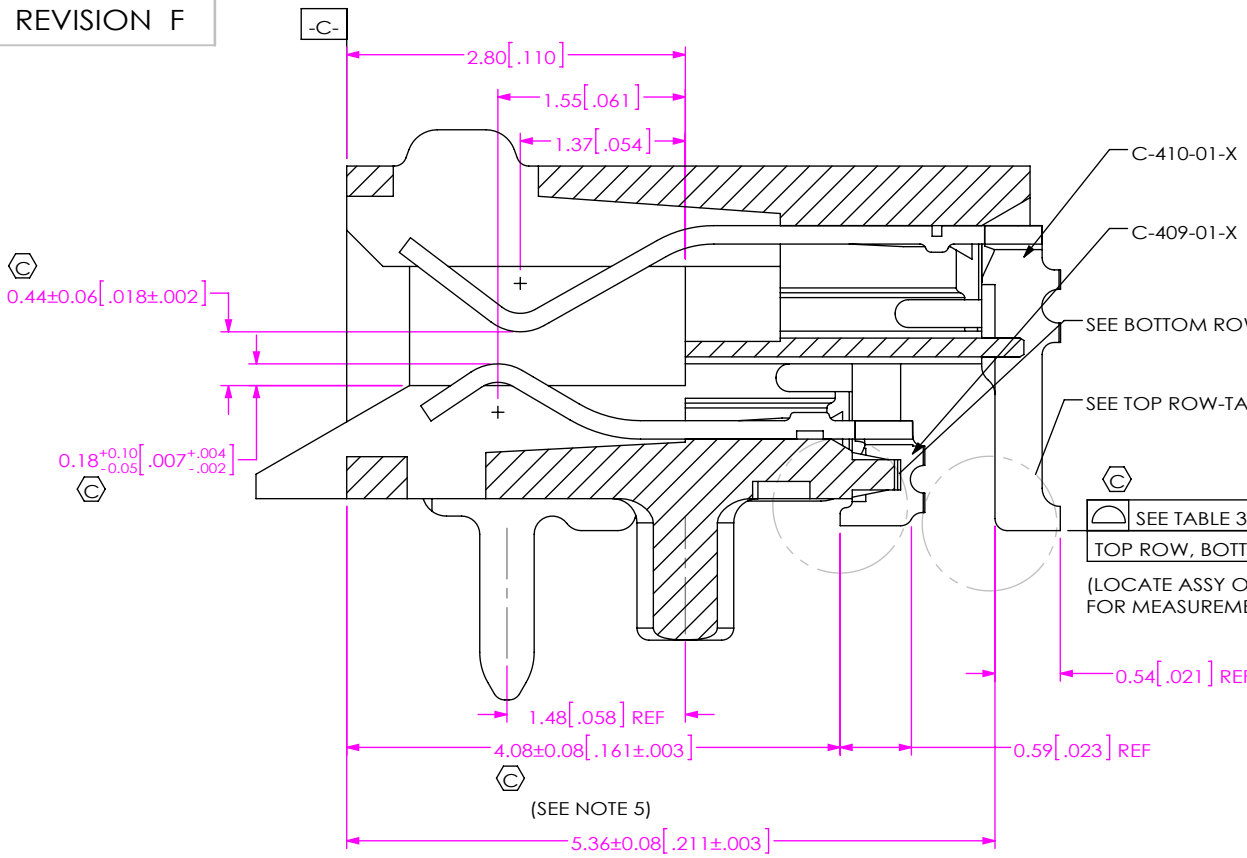
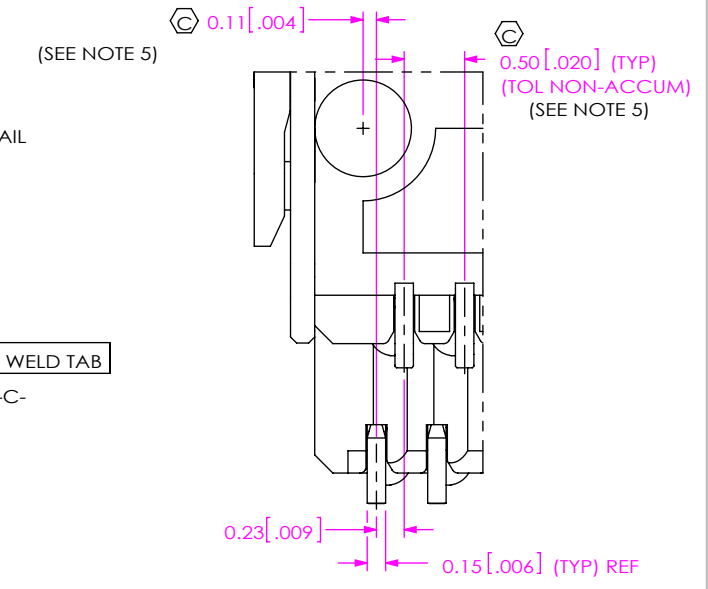
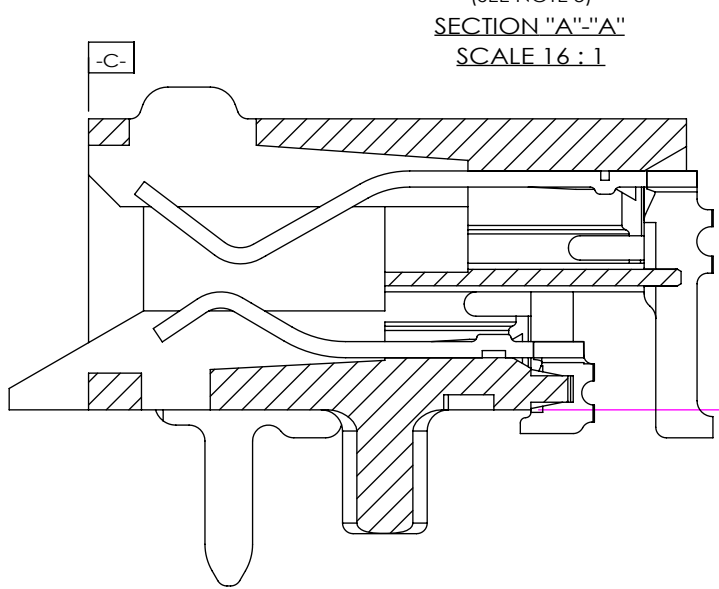


TABLE 3			
No OF POS	BOTTOM ROW STRAIGHTNESS	TOP ROW STRAIGHTNESS	COPLANARITY
-019, *-025	0.10 [0.004]	0.10 [0.004]	0.10 [0.004]
*-038, *-050	0.10 [0.004]	0.10 [0.004]	0.13 [0.005]

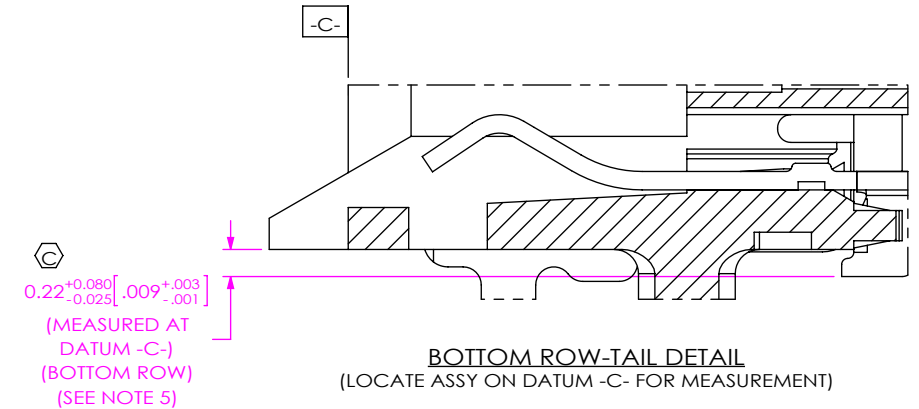
(* = NOT TOOLED)



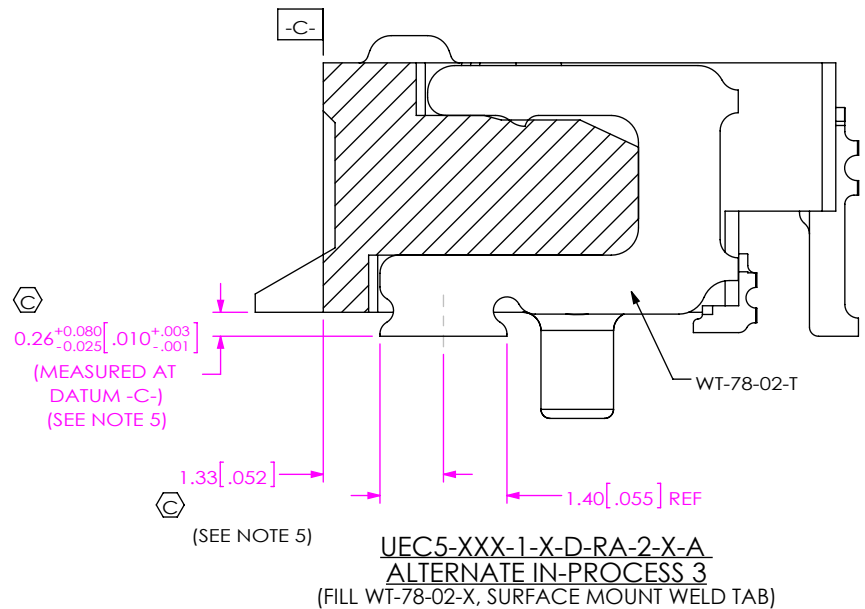
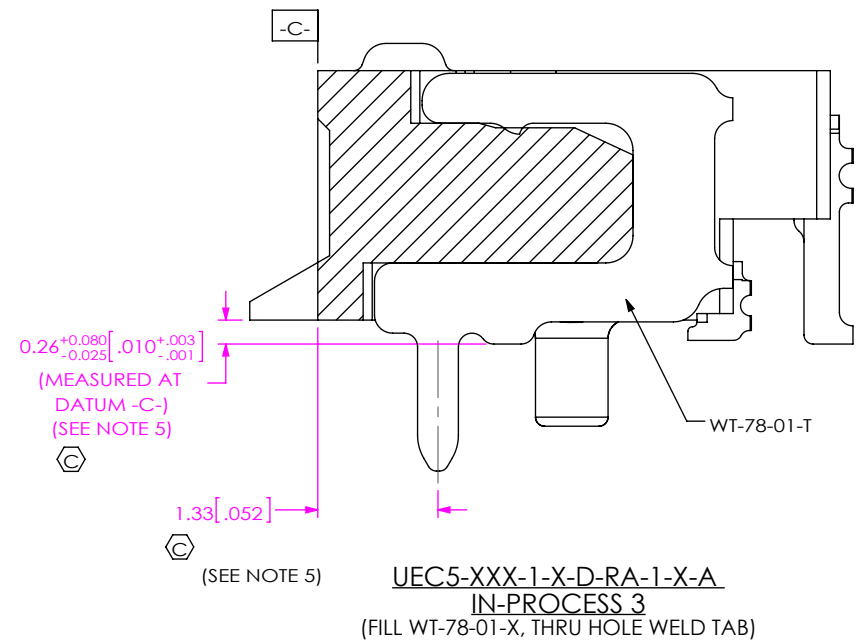
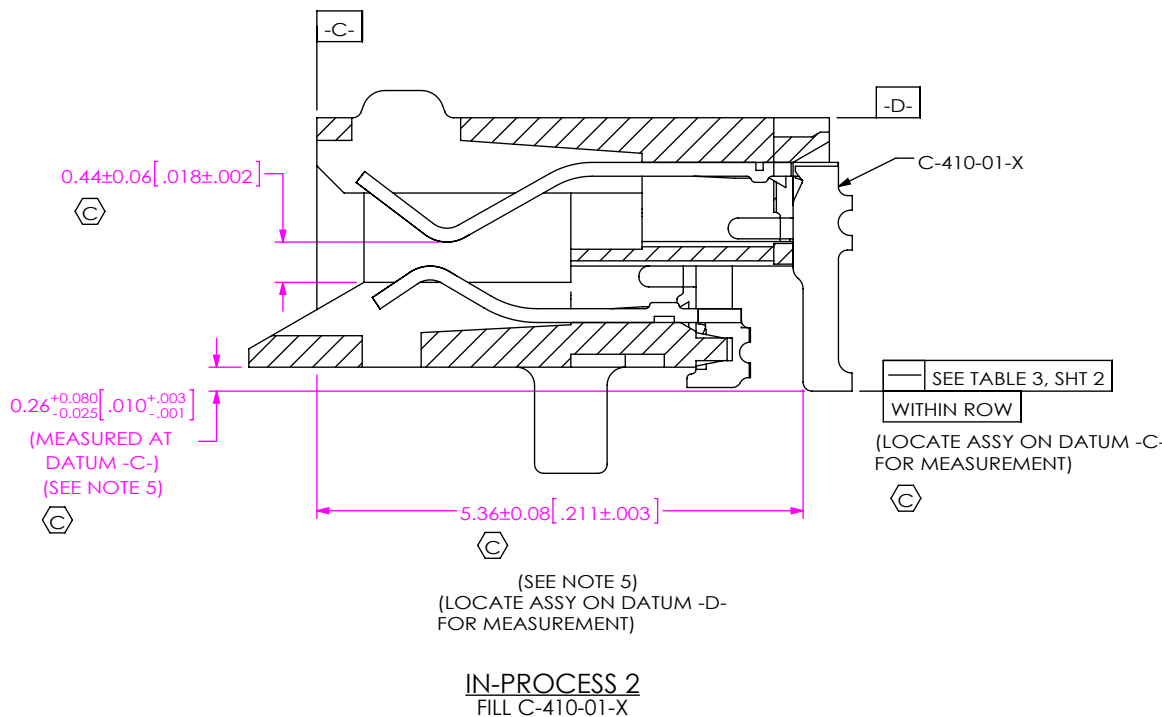
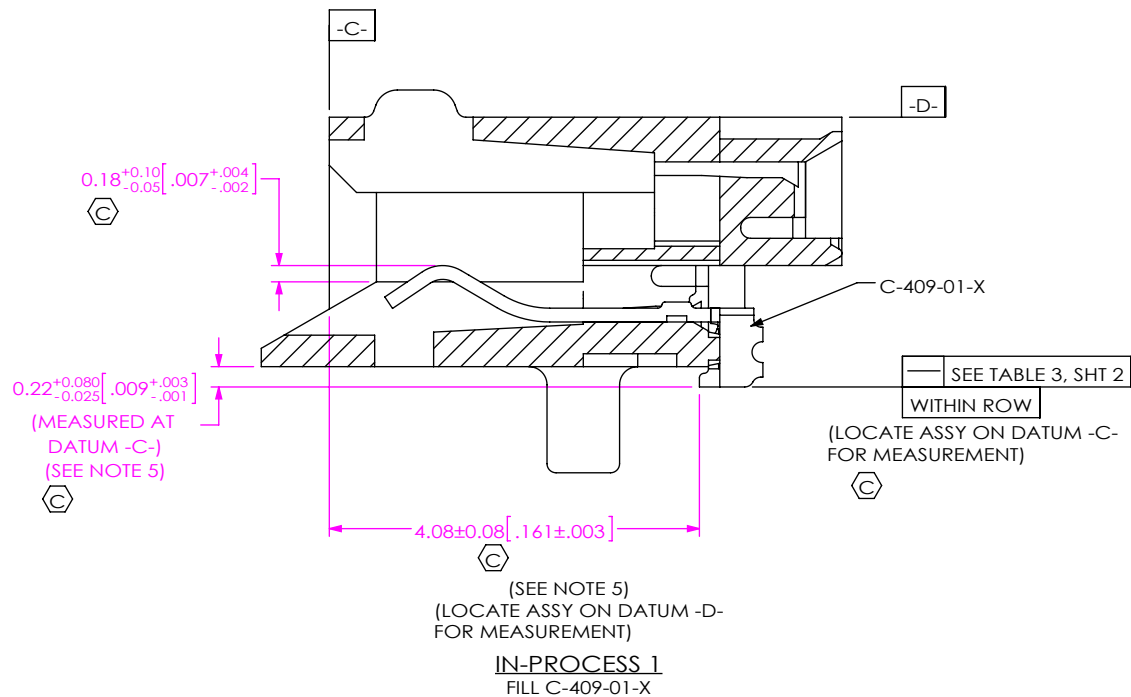
SCALE 16:1



TOP ROW-TAIL DETAIL
(LOCATE ASSY ON DATUM -C- FOR MEASUREMENT)



<p>PROPRIETARY NOTE</p> <p>THIS DOCUMENT CONTAINS CONFIDENTIAL AND PROPRIETARY INFORMATION AND ALL DESIGN, MANUFACTURING, REPRODUCTION, USE, PATENT RIGHTS AND SALES RIGHTS ARE EXPRESSLY RESERVED BY SAMTEC, INC. THIS DOCUMENT SHALL NOT BE DISCLOSED, IN WHOLE OR PART, TO ANY UNAUTHORIZED PERSON OR ENTITY NOR REPRODUCED, TRANSFERRED OR INCORPORATED IN ANY OTHER PRODUCT IN ANY MANNER WITHOUT THE EXPRESS WRITTEN CONSENT OF SAMTEC, INC.</p> <p>DO NOT SCALE DRAWING</p> <p>SHEET SCALE: 16:1</p>		
	<p>520 PARK EAST BLVD, NEW ALBANY, IN 47150 PHONE: 812-944-6733 FAX: 812-948-5047 e-Mail: info@SAMTEC.com code 55322</p>	
	<p>DESCRIPTION: 0.5MM EDGE RATE SOCKET ASSEMBLY</p>	
	<p>DWG. NO. UEC5-XXX-1-X-D-RA-X-A</p>	
<p>BY: KNOWLDEN 9/10/2013 SHEET 2 OF 5</p>		



<p>PROPRIETARY NOTE</p> <p>THIS DOCUMENT CONTAINS CONFIDENTIAL AND PROPRIETARY INFORMATION AND ALL DESIGN, MANUFACTURING, REPRODUCTION, USE, PATENT RIGHTS AND SALES RIGHTS ARE EXPRESSLY RESERVED BY SAMTEC, INC. THIS DOCUMENT SHALL NOT BE DISCLOSED, IN WHOLE OR PART, TO ANY UNAUTHORIZED PERSON OR ENTITY NOR REPRODUCED, TRANSFERRED OR INCORPORATED IN ANY OTHER PROJECT IN ANY MANNER WITHOUT THE EXPRESS WRITTEN CONSENT OF SAMTEC, INC.</p> <p>DO NOT SCALE DRAWING</p> <p>SHEET SCALE: 12:1</p>	<p>samtec</p> <p>520 PARK EAST BLVD, NEW ALBANY, IN 47150 PHONE: 812-944-6733 FAX: 812-948-5047 e-Mail: info@SAMTEC.com code 55322</p>	
	<p>DESCRIPTION: 0.5MM EDGE RATE SOCKET ASSEMBLY</p>	
	<p>DWG. NO. UEC5-XXX-1-X-D-RA-X-A</p>	
	<p>BY: KNOWLDEN 9/10/2013 SHEET 3 OF 5</p>	

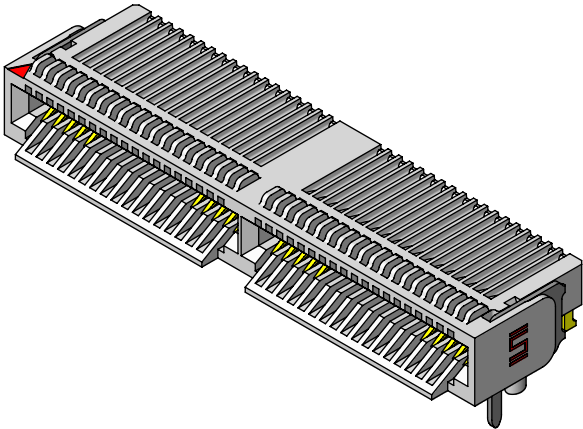
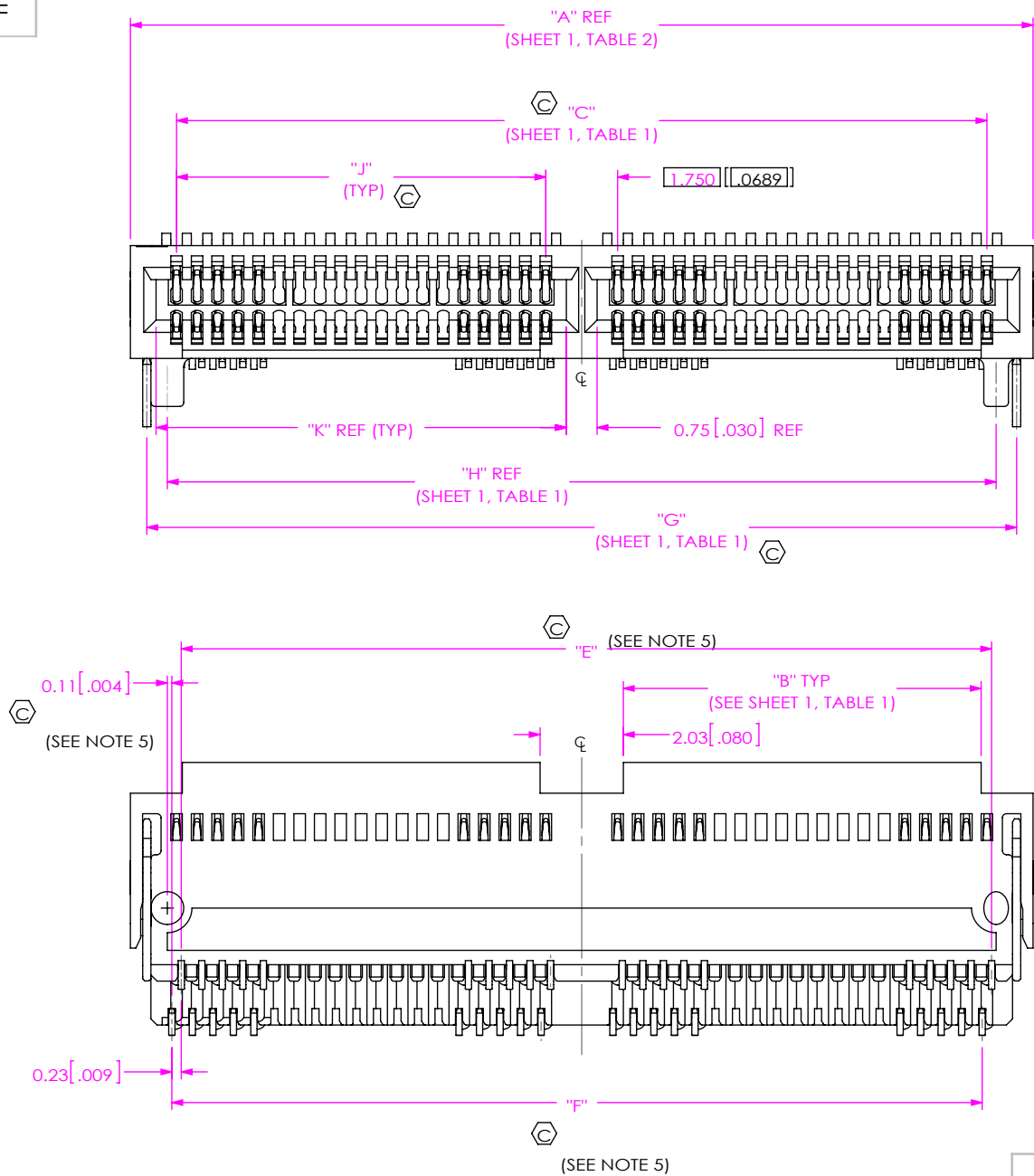


TABLE 4		
No OF POS	"J"	"K"
-019	N/A	N/A
*-025	N/A	N/A
*-038	9.00 [0.354]	10.00 [0.394]
*-050	12.00 [0.472]	13.00 [0.512]

(* = NOT TOOLED)

FIG 2
UEC5-038-1-X-D-RA-1-A SHOWN
(DIFFERENT AS SHOWN, OTHERWISE SAME AS FIG 1)
(SOME CENTER FEATURES REMOVED FOR CLARITY)
(PP NOT SHOWN FOR CLARITY)
(NOT TOOLED)

• PROPRIETARY NOTE •
THIS DOCUMENT CONTAINS CONFIDENTIAL AND PROPRIETARY INFORMATION AND ALL DESIGN, MANUFACTURING, REPRODUCTION, USE, PATENT RIGHTS AND SALES RIGHTS ARE EXPRESSLY RESERVED BY SAMTEC, INC. THIS DOCUMENT SHALL NOT BE DISCLOSED, IN WHOLE OR PART, TO ANY UNAUTHORIZED PERSON OR ENTITY NOR REPRODUCED, TRANSFERRED OR INCORPORATED IN ANY OTHER PROJECT IN ANY MANNER WITHOUT THE EXPRESS WRITTEN CONSENT OF SAMTEC, INC.
DO NOT SCALE DRAWING
SHEET SCALE: 6:1

samtec
520 PARK EAST BLVD, NEW ALBANY, IN 47150
PHONE: 812-944-6733 FAX: 812-948-5047
e-Mail info@SAMTEC.com code 55322

DESCRIPTION:
0.5MM EDGE RATE SOCKET ASSEMBLY

DWG. NO.
UEC5-XXX-1-X-D-RA-X-A

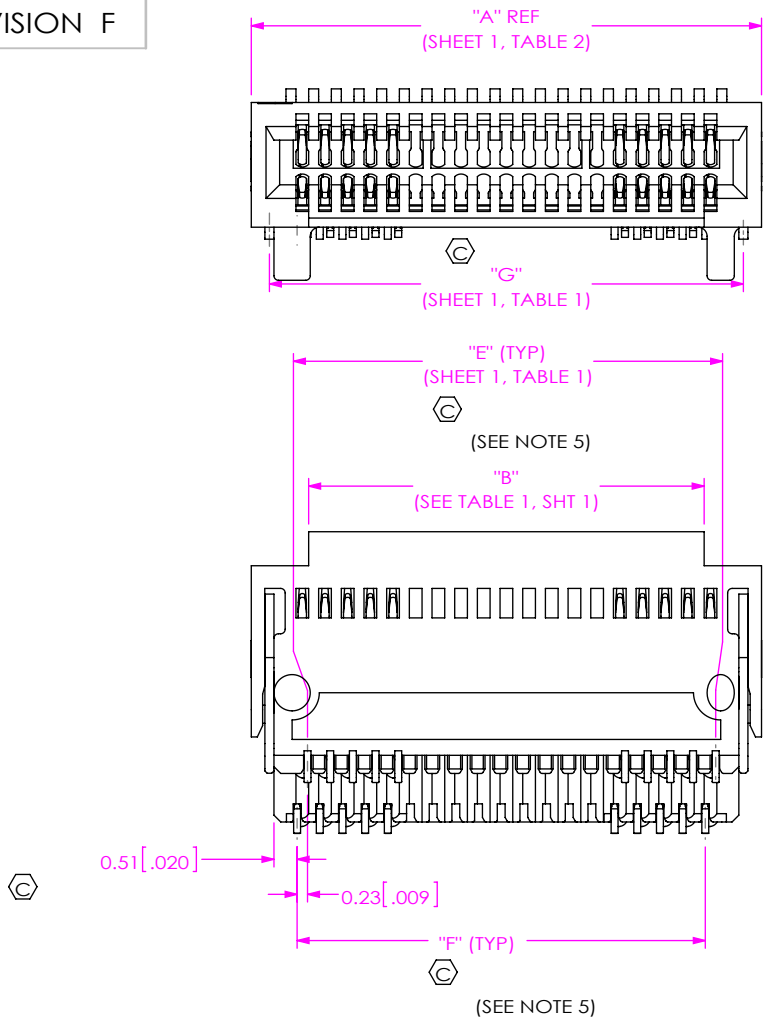


FIG 3
UEC5-025-1-X-D-RA-2 SHOWN
(NO ALIGNMENT PIN OPTION)
(DIFFERENT AS SHOWN, OTHERWISE SAME AS FIG 1)
(SOME CENTER FEATURES REMOVED FOR CLARITY)
(PP NOT SHOWN FOR CLARITY)
(NOT TOOLED)

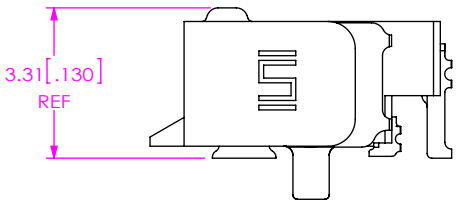


FIG 4
POLYIMIDE PAD
UEC5-019-1-X-D-RA-X-A SHOWN
(USE K-DOT-.157-.250-.005)
(DIFFERENT AS SHOWN, OTHERWISE SAME AS FIG 1)
(SOME CENTER FEATURES REMOVED FOR CLARITY)
(SEE NOTE 6)

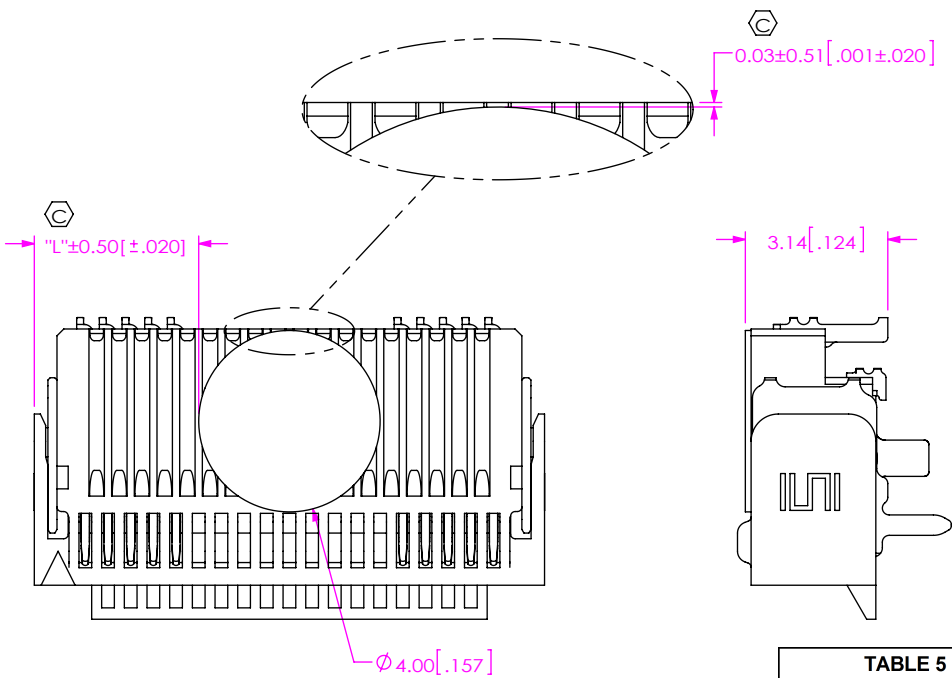


TABLE 5	
No. OF POS	"L"
-019	3.62 [0.143]
*-025	5.12 [0.202]
*-038	9.00 [0.354]
*-050	12.00 [0.472]
(* = NOT TOOLED)	

PROPRIETARY NOTE
THIS DOCUMENT CONTAINS CONFIDENTIAL AND PROPRIETARY INFORMATION AND ALL DESIGN, MANUFACTURING, REPRODUCTION, USE, PATENT RIGHTS AND SALES RIGHTS ARE EXPRESSLY RESERVED BY SAMTEC, INC. THIS DOCUMENT SHALL NOT BE DISCLOSED, IN WHOLE OR PART, TO ANY UNAUTHORIZED PERSON OR ENTITY NOR REPRODUCED, TRANSFERRED OR INCORPORATED IN ANY OTHER PROJECT IN ANY MANNER WITHOUT THE EXPRESS WRITTEN CONSENT OF SAMTEC, INC.

DO NOT SCALE DRAWING
SHEET SCALE: 6:1

samtec

520 PARK EAST BLVD, NEW ALBANY, IN 47150
PHONE: 812-944-6733 FAX: 812-948-5047
e-Mail: info@SAMTEC.com code: 55322

DESCRIPTION:
0.5MM EDGE RATE SOCKET ASSEMBLY

DWG. NO.
UEC5-XXX-1-X-D-RA-X-A

BY: KNOWLDEN 9/10/2013 SHEET 5 OF 5