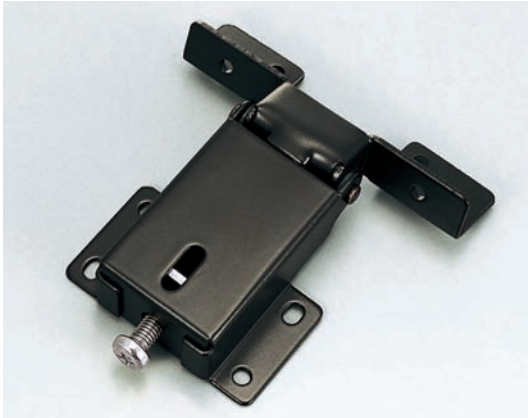


## TH-91 Positioning Spring Hinge



### Characteristic

The lid opens lightly by an action of the coil spring.

### Specification

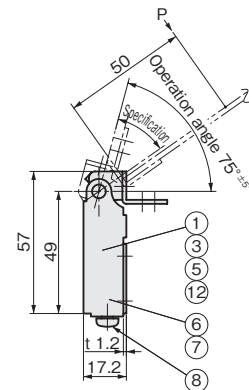
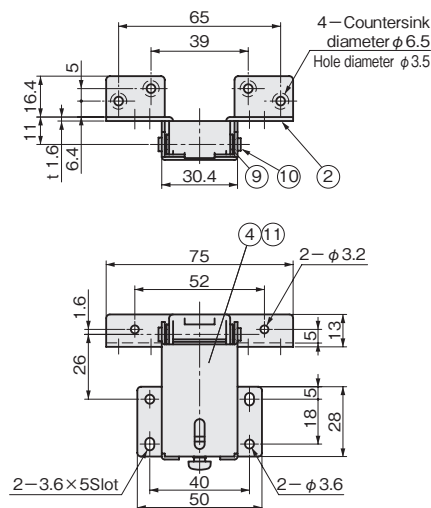
Free stop angle: Approx. 35°~75°  
(By its balance between spring power and weight of the cover)  
Maximum spring load P: Approx.40 N(4.08kgf)

### Application

Office automation appliances / Audio devices

### Note

No.8 is cross recessed head screw which can not fix spring load.  
Please avoid using outdoor, hot and humid place, watery place.  
Use more than 2 hinges by its cover weight.  
Operation angle must be followed as stated.



Model No.	Net Weight(g)	Code No.
TH-91	97.4	2374

### Parts List

No.	Part Name	Material	Finish	Quantity
1·2	Cover (A) · (B)	SPCC	Brown Half-Polished	1 Each
3	Spring	SWP	Uc	1
4	Roller	POM	Brown	2
5	Receiver (A)			1
6	Receiver (B)	SPCC	Uc	1
7	Adjuster Plate			1
8	Cross Recessed Head Screw	S	Ni	1
9	Washer	PA	White	2
10·11	Shaft (A) · (B)	SS400	Br	1 Each
12	Cushion	Sponge Rubber	—	2

## TH-92 Positioning Spring Hinge



### Characteristic

The lid opens lightly by an action of the coil spring.

### Specification

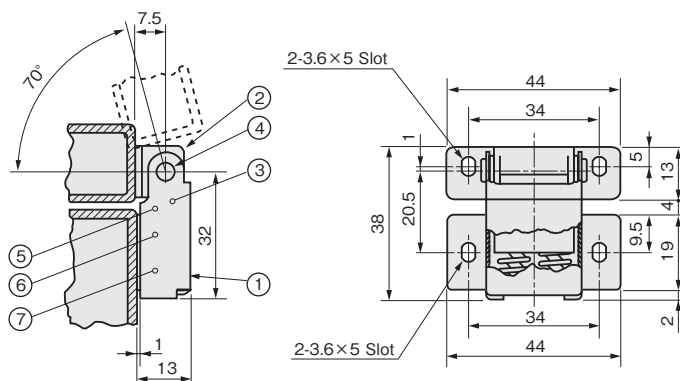
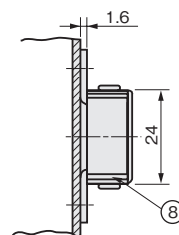
Spring load is approx. 19.6N(2kgf) at 50mm from a hole for installation.

### Application

Office automation appliances / Audio devices

### Note

Be careful for the center shearing of rotational shaft, when using more than 2 hinges.  
Install the shaft at horizontal position.



Model No.	Net Weight (g)	Code No.
TH-92	36.4	2375

### Parts List

No.	Part Name	Material	Finish	Quantity
1	Cover (A)	SPCC	Brown Half-Polished	1
2	Cover (B)			1
3	Shaft (A)	SWRM	Br	1
4	Shaft (B)			1
5	Roller	POM	Brown	1
6	Spring Receiver			1
7	Spring	SWP	Zn	2
8	Washer	PA	White	2