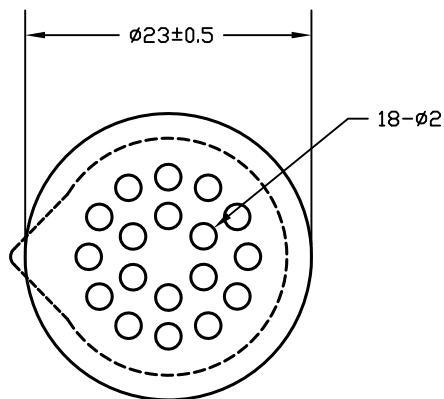
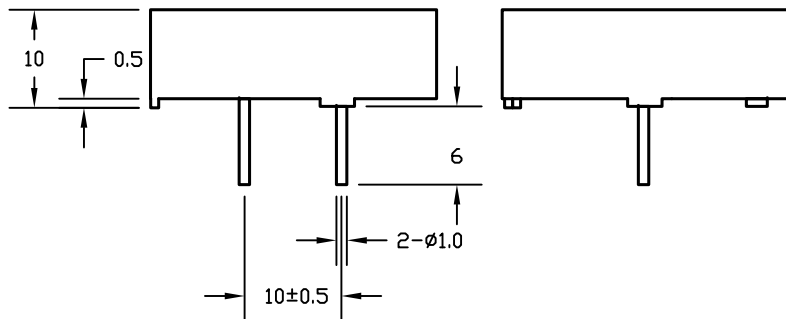


REVISIONS

DDC. NO. SPC-F005 * Effective: 7/8/02 * DCP No: 1398

DCP #	REV	DESCRIPTION	DRAWN	DATE	CHECKD	DATE	APPRVD	DATE
2070	A	Released	JN	09-03-09	JWM	09-03-09	JWM	09-03-09



Specification

1. Rated Noise Power: 0.15 W
2. Max. Input Power: 0.3 W
3. Rated Frequency Range: 700~5000Hz
4. Rated Frequency: 1200±200Hz
5. Rated Impedance: 8Ω
6. Min Sound Pressure Level: 70dB at 1.2KHz
1.1 Vrms Sine Wave/10cm
7. Case Material: ABS
8. Operating Temperature: -20~+60°C
9. Weight: 12g

DISCLAIMER:
ALL STATEMENTS AND TECHNICAL INFORMATION CONTAINED HEREIN ARE BASED UPON INFORMATION AND/OR TESTS WE BELIEVE TO BE ACCURATE AND RELIABLE. SINCE CONDITIONS OF USE ARE BEYOND OUR CONTROL, THE USER SHALL DETERMINE THE SUITABILITY OF THE PRODUCT FOR THE INTENDED USE AND ASSUME ALL RISK AND LIABILITY WHATSOEVER IN CONNECTION THEREWITH.

TOLERANCES:

UNLESS OTHERWISE SPECIFIED, DIMENSIONS ARE FOR REFERENCE PURPOSES ONLY.

DRAWN BY:

Jason Nash

DATE:

09-03-09

CHECKED BY:

Jason Nash

DATE:

09-03-09

APPROVED BY:

Jason Nash

DATE:

09-03-09

DRAWING TITLE:

MECHANICAL BUZZER

SIZE

A

DWG. NO.

MCKPMB-G2300-K3902

ELECTRONIC FILE

25R0737.dwg

REV

A

SCALE:

NTS

U.O.M.: INCHES [mm]

SHEET: 1 OF 1