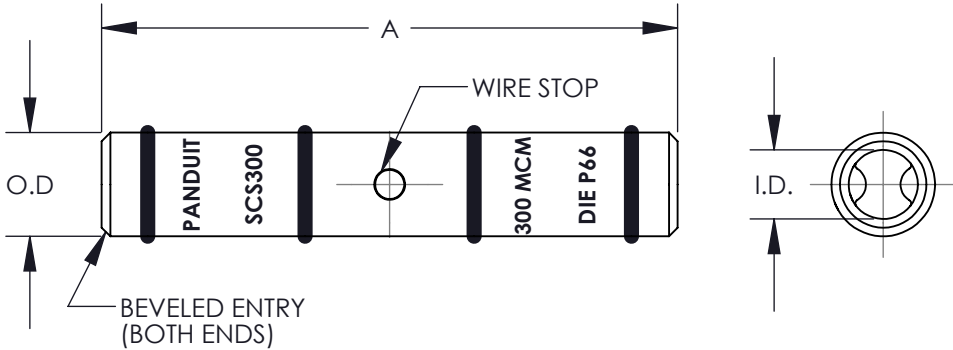


PANDUIT PART NUMBER	COPPER CONDUCTOR SIZE	EXPANDED WIRE RANGE***	BARREL		OVERALL LENGTH "A" +/- .12	WIRE STRIP LENGTH	PANDUIT CRIMP TOOL PART NUMBERS			
			I.D. +/- .01	O.D. +/- .01			CT-720	CT-920, CT-920CH, CT-930, CT-930CH, CT-940CH*, CT-2920, CT-2940*	CT-2001	CT-2950**, CT- 2980, CT-980, CT-980CH
			DIE PART NO./DIE SET COLOR & INDEX NO./NUMBER OF CRIMPS							
SCS300-X	300 kcmil	#2/0 - 300 kcmil	0.65	0.81	2.25	1-1/16	CD-720-4 WHITE P66 2 CRIMPS	CD-920-300 WHITE P66 2 CRIMPS	CD-2001-300 WHITE P66 2 CRIMPS	STD 2 CRIMPS
SCS350-X	350 kcmil	#3/0 - 350 kcmil	0.70	0.87	2.37	1-1/8	CD-720-5 RED P71 2 CRIMPS	CD-920-350 RED P71 2 CRIMPS	CD-2001-350 RED P71 2 CRIMPS	STD 2 CRIMPS
SCS350UP-X										
SCS400-6	400 kcmil	#4/0 - 400 kcmil	0.76	0.95	2.50	1-3/16	CD-720-6 BLUE P76 2 CRIMPS	CD-920-400 BLUE P76 2 CRIMPS	CD-2001-400 BLUE P76 2 CRIMPS	STD 2 CRIMPS
SCS400UP-6										
SCS500-6	500 kcmil	#4/0 - 500 kcmil	0.83	1.05	2.87	1-3/8	CD-720-7 BROWN P87 2 CRIMPS	CD-920-500 BROWN P87 2 CRIMPS	CD-2001-500 BROWN P87 2 CRIMPS	STD 2 CRIMPS
SCS500UP-6										
SCS600-6	600 kcmil	250 - 600 kcmil	0.92	1.18	2.87	1-3/8	---	CD-920-600 GREEN P94 2 CRIMPS	---	STD 2 CRIMPS
SCS600UP-6										
SCS750-6	750 kcmil	500 - 750 kcmil	1.03	1.29	3.37	1-5/8	---	CD-920-750 CD-940-750*** BLACK P106 2 CRIMPS	---	STD 2 CRIMPS
SCS750UP-6										
SCS800-6	800 kcmiL	----	1.05	1.35	3.37	1-7/8	---	CD-940-800*** ORANGE P107 2 CRIMPS	---	----
SCS1000-3	1000 kcmil	----	1.17	1.50	3.87	1-7/8	---	CD-940-1000*** WHITE P125 2 CRIMPS	---	----
SCS1000UP-3										

\* CD-920 DIES CAN BE USED WITH CT-940CH AND CT-2940 TOOL WITH CD-940-DA DIE ADAPTER  
\*\* MAX SIZE 500 MCM  
\*\*\* WITH CT-980, CT-980CH, CT-2950 7 CT-2980



- NOTES:
- 1. MATERIAL: HIGH CONDUCTIVITY SEAMLESS COPPER TUBING
  - 2. ELECTRO TIN PLATED  
**NOTE: SCS350UP, SCS400UP, SCS500UP, SCS600UP, SCS750UP, SCS1000UP ARE NOT PLATED**
  - 3. BARREL COLOR CODED WITH DIE SET INDEX NUMBER  
**NOTE: PLATED PARTS ONLY**
  - 4. UL LISTED WITH CODE COPPER CONDUCTORS FOR APPLICATIONS UP TO 35KV, FILE E52164
  - 5. CONSULT CABLE MANUFACTURER FOR VOLTAGE STREE RELIEF INSTRUCTIONS WITH APPLICATIONS GREATER THAN 2000 VOLTS
  - 6. CSA CERTIFIED FOR APPLICATIONS UP TO 600V, FILE LR31212
  - 7. FOR USE WITH COPPER CABLES ONLY



08	6/13	JHNU	RGB	ADDED SCS800 TO DRAWING	N41135BB-C41135	RGB	RGB	<div>PANDUIT CORP. TINLEY PARK, ILLINOIS</div> <div>SCS STANDARD BARREL #300-#1000 SPLICES</div> <div>CUSTOMER DRAWING</div>		
07	6/12	JHNU	RGB	REMOVED SCS800 FROM DRAWING	N41135BB-C41135	RGB	RGB			
06	2/12	JHNU	RGB	ADDED SCS800 TO DRAWING	N41135BB-C41135	RGB	RGB			
05	8/11	JHNU	RGB	ADDED SCS350UP, SCS400UP, SCS500UP, SCS600UP, SCS750UP, SCS1000UP, CONVERTED DWG TO SOLIDWORKS	N41135BB-C41135	RGB	RGB			
04	10/02	SAC		REMOVED SCS800-6				<div>UNLESS OTHERWISE SPECIFIED</div> <div>DIMENSIONAL TOLERANCES ARE:</div> <div>(.X) ±      (.XXX) ±</div> <div>(.XX) ±     ANGLES ±</div>		
03	6/02	SAB	JAC	ADDED SCS800-6, UPDATED SCS750-6 & SCS1000-3 TOOL INFO ALL kcmils WERE MCM	10252	JAC	LM			
02	4/01	BDK	SKB	ADDED LETTER "P" TO DIE INDEX NUMBER, ADDED CT-2980, CT-980, & CT-980CH, EXPANDED WIRE RANGE	09383	JAC	RM	<div>DRAWN BY PWS</div> <div>DATE 3/93</div> <div>CHK'D GRM</div>		
01	2/94	PWS	JCJ	FILESPEC WAS C41105, DWG WAS C41105	02060	LA	RM			
00	3/93	PWS	GRM	DRAWING RELEASED	01415		KRS	<div>SCALE NONE</div> <div>DRAWING NO / CAD FILE C41135_08</div> <div>DWG B SIZE</div>		
REV	DATE	BY	CHK	DESCRIPTION	ECN	-R	SUP			