



# SAW Components

Data Sheet B7775

Data Sheet

A large, stylized, 3D-rendered graphic of the word "EPCOS" in a light gray, sans-serif font. The letters are tilted and appear to be floating or emerging from a dark, textured background that resembles a globe or a complex circuit board. The overall effect is a sense of depth and modernity.



## SAW Components

B7775

### Low-Loss Filter

1575,42 MHz

#### Data Sheet

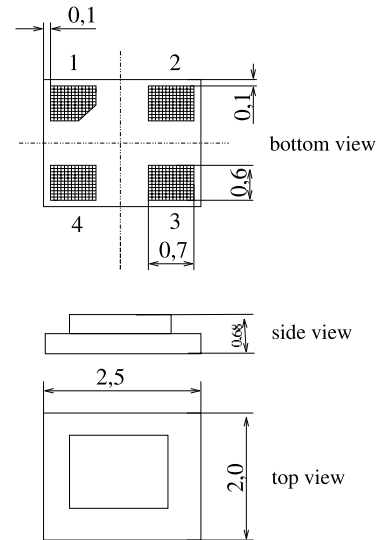
##### Features

- Low loss RF filter for GPS receivers
- Low amplitude ripple
- Low insertion attenuation
- Usable passband 2 MHz
- No matching network required for operation at 50  $\Omega$
- Unbalanced to unbalanced operation
- Package for **Surface Mounted Technology (SMT)**

##### Terminals

- Ni, gold-plated

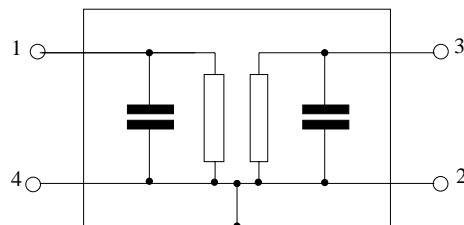
#### Chip Sized SAW Package DCS4E



Dimensions in mm, approx. weight 0,012g

##### Pin configuration

- |     |        |
|-----|--------|
| 1   | Input  |
| 3   | Output |
| 2,4 | Ground |



Type	Ordering code	Marking and Package according to	Packing according to
B7775	B39162-B7775-E510	C61157-A7-A121	F61074-V8153-Z000

Electrostatic Sensitive Device (ESD)

##### Maximum ratings

Operable temperature range	$T$	- 40/+ 85	$^{\circ}\text{C}$	source and load impedance 50 $\Omega$ continuous wave signal
Storage temperature range	$T_{\text{stg}}$	- 40/+ 85	$^{\circ}\text{C}$	
DC voltage	$V_{\text{DC}}$	3	V	
Input power max.				
1573,42 ... 1577,42 MHz	$P_{\text{IN}}$	3	dBm	
50,0...1460 and 1710 ... 4000 MHz	$P_{\text{IN}}$	13	dBm	



# SAW Components

B7775

## Low-Loss Filter

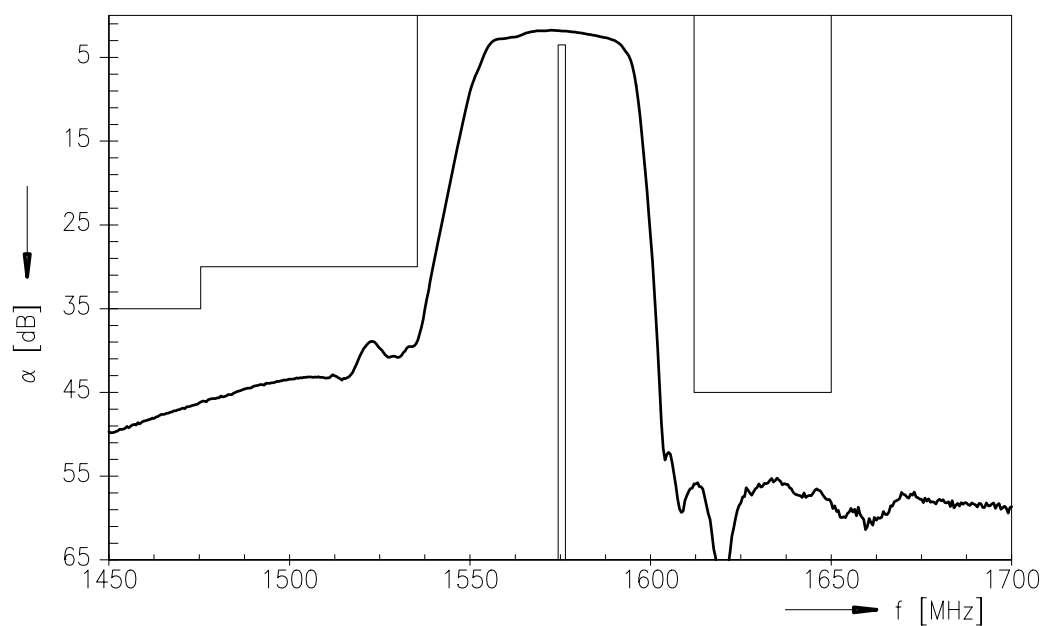
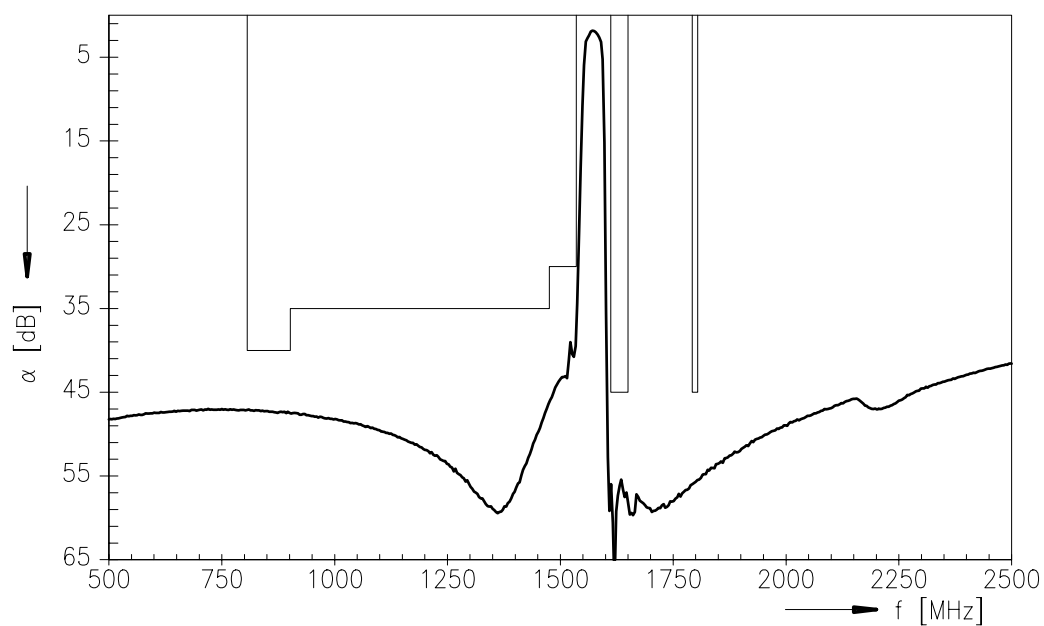
1575,42 MHz

### Data Sheet

#### Characteristics

Operating temperature range:  $T_A = -40 \dots +85 \text{ }^\circ\text{C}$   
Terminating source impedance:  $Z_S = 50 \text{ }\Omega$   
Terminating load impedance:  $Z_L = 50 \text{ }\Omega$

		min.	typ.	max.	
<b>Nominal frequency</b>	$f_N$	—	1575,42	—	MHz
<b>Maximum insertion attenuation</b>	$\alpha_{\max}$				
1574,42 ... 1576,42 MHz		—	2,0	3,0	dB
<b>Amplitude ripple in passband (p-p)</b>	$\Delta\alpha$				
1574,42 ... 1576,42 MHz		—	0,1	1,0	dB
<b>Return loss (Input and Output)</b>					
1574,42 ... 1576,42 MHz		12	17	—	dB
<b>Attenuation</b>	$\alpha$				
806,00 ... 902,00 MHz		40	47	—	dB
902,00 ... 1475,42 MHz		35	45	—	dB
1475,42 ... 1535,42 MHz		30	37	—	dB
1612,00 ... 1650,00 MHz		45	53	—	dB
1792,00 ... 1804,00 MHz		45	53	—	dB
<b>Temperature coefficient of frequency</b>	$TC_f$	—	- 36	—	ppm/K

**SAW Components****B7775****Low-Loss Filter****1575,42 MHz****Data Sheet****Transfer function (pass band):****Transfer function:**



**SAW Components**

**B7775**

**Low-Loss Filter**

**1575,42 MHz**

**Data Sheet**

**Published by EPCOS AG**

**SAW MC WT, P.O. Box 80 17 09, 81617 Munich, GERMANY**

**TEL ++49 89 636 09, FAX ++49 89 636 2 26 89**

© EPCOS AG 2004. Reproduction, publication and dissemination of this brochure and the information contained therein without EPCOS' prior express consent is prohibited.

Purchase orders are subject to the General Conditions for the Supply of Products and Services of the Electrical and Electronics Industry recommended by the ZVEI (German Electrical and Electronic Manufacturers' Association), unless otherwise agreed.

This brochure replaces the previous edition.

For questions on technology, prices and delivery please contact the Sales Offices of EPCOS AG or the international Representatives.

Due to technical requirements components may contain dangerous substances. For information on the type in question please also contact one of our Sales Offices.