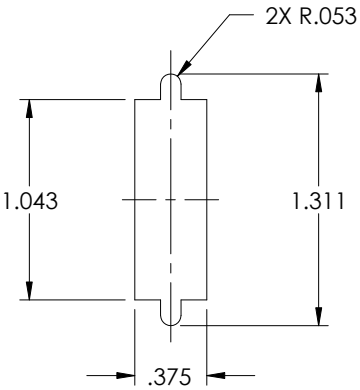
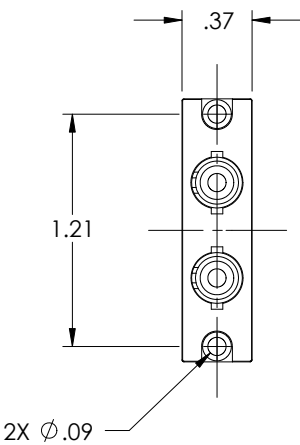
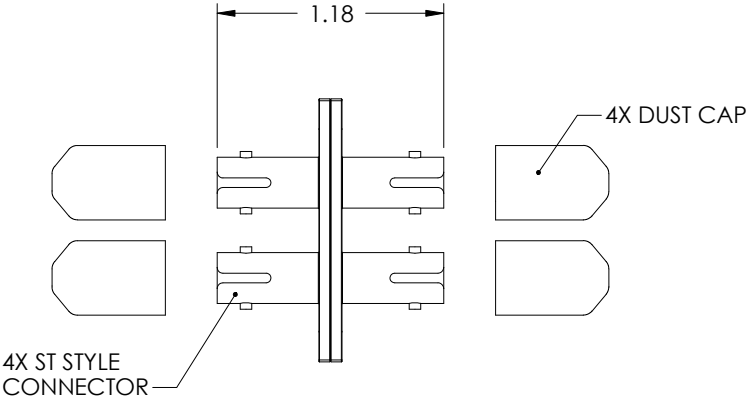
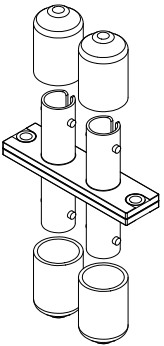


THE INFORMATION CONTAINED IN THIS DRAWING IS THE SOLE PROPERTY OF L-COM, INC. ANY REPRODUCTION IN PART OR WHOLE WITHOUT THE WRITTEN PERMISSION OF L-COM, INC. IS PROHIBITED.

REVISIONS			
REV	DESCRIPTION	DATE	APPROVED
A	RELEASED FOR PRODUCTION	12/20/00	MCCORMICK
B	ECN#1605 ADDED COMPONENT SPECIFICATION TABLE	12/04/03	MCCORMICK
.	.	.	.
.	.	.	.



RECOMMENDED
PANEL HOLE



Component Specifications	
Material	
Sleeve	Ceramic
Body	Zinc Alloy
Dust cap	PVC
Rivet	Copper
Finish	
Body	Nickel
Rivet	Tin

CS-119

UNLESS OTHERWISE SPECIFIED,
DIMENSIONS ARE IN INCHES
TOLERANCES ARE:
.X ±.1
.XX ±.05
.XXX ±.005
CABLE LENGTH TOLERANCE
<300" ±5% >300" ±2%

APPROVALS	DATE
DRAWN BY C.McCORMICK	12/20/00
CHECKED BY DFP	01/12/01
APPROVED BY R.CARRICK	01/12/01

CONFIGURATION DETAILS OF
UNDIMENSIONED FEATURES
MAY VARY

L-com CONNECTIVITY PRODUCTS		45 BEECHWOOD DRIVE NORTH ANDOVER, MA 01845	
PRODUCT DESCRIPTION			
ST TO ST DUPLEX ADAPTOR			
DRAWING TITLE			
OUTLINE DRAWING			
SIZE A	FSCM NO. 43321	DWG. NO. FOA-401A-OD1	REV. B
SCALE: NONE	CAD FILE: FOA-401A-OD1.SLDDRW		SHEET 1 OF 1