

A quick reliable solution for ground, neutral or low voltage distribution applications. The Busbar System consists of a busbar, busbar supports, and screw clamp terminals for terminating wires

NEB 10 (10 x 3 mm) and NEB 6 (6 x 6 mm), tin plated copper busbars are available in one meter lengths. Both have a 140A current carrying capacity.

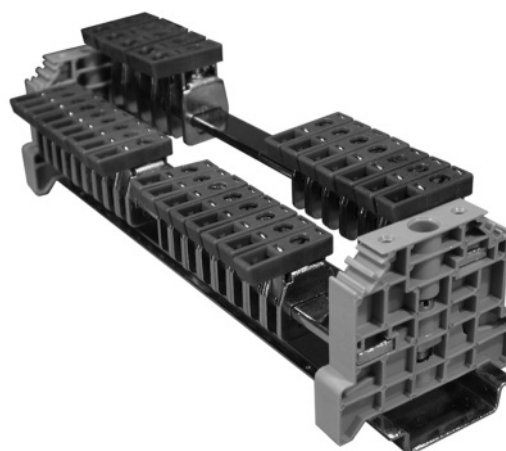
NES plastic support with fixing screws for holding 10 x 3 & 6 x 6 busbar makes placing of busbar an easy task. Busbars up to 200 mm length should be supported at ends by two busbar supports. For busbars exceeding 200 mm length, it is recommended to provide intermediate busbar support. Easy to operate CENC clamp secures wire to the busbar.



	CENC4			CENC16			CENC35		
Terminal Width	7.5 mm			9.8 mm			14.5 mm		
Height x Length	30 x 23.3 mm			36 x 23.3 mm			45 x 27.3 mm		
Stripping Length	12 mm			16 mm			16 mm		
Insulation Material	Polyamide 6.6			Polyamide 6.6			Polyamide 6.6		
Type of Connection	1 screw clamp connection			1 screw clamp connection			1 screw clamp connection		
Approvals									
Wire Range	22-10 AWG 0.5-6 sq.mm 22-12 AWG			10-4 AWG 6-16 sq.mm 10-6 AWG			8-2 AWG 10-35 sq.mm 8-2 AWG		
Current Rating*	35 A 41 A			80 A 76 A			125 A 125 A		
Torque	14 lb-in 0.8 Nm 14 lb-in			14 lb-in 2.0 Nm 17.5 lb-in			25 lb-in 2.5 Nm 25 lb-in		
Other Approvals									

Terminal Block**

	Cat. No.	Std. Pk.	Cat. No.	Std. Pk.	Cat. No.	Std. Pk.
CENC4		50	CENC16	50	CENC35	50
Busbar (10 x 3 mm)	NEB10	1 m	NEB10	1 m	NEB10	1 m
Busbar (6 x 6 mm)	NEB6	1 m	NEB6	1 m	NEB6	1 m
Plastic Support with Fixing Screw	NES	50	NES	50	NES	50
End Clamp/Bus bar support for rail mounting	CA202	50	CA202	50	CA202	50
Marking Tags (MT Type)	MT5	100	MT6	100	MT6	100



* 140A current carrying capacity of busbar should be taken into account while connecting loads.

** Consult for other available colors.

Mouser Electronics

Authorized Distributor

Click to View Pricing, Inventory, Delivery & Lifecycle Information:

[Altech:](#)

[NEB10](#) [NEB6](#)