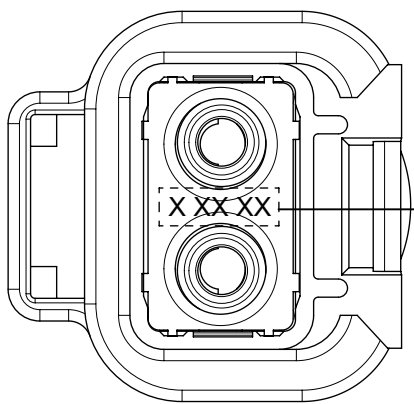
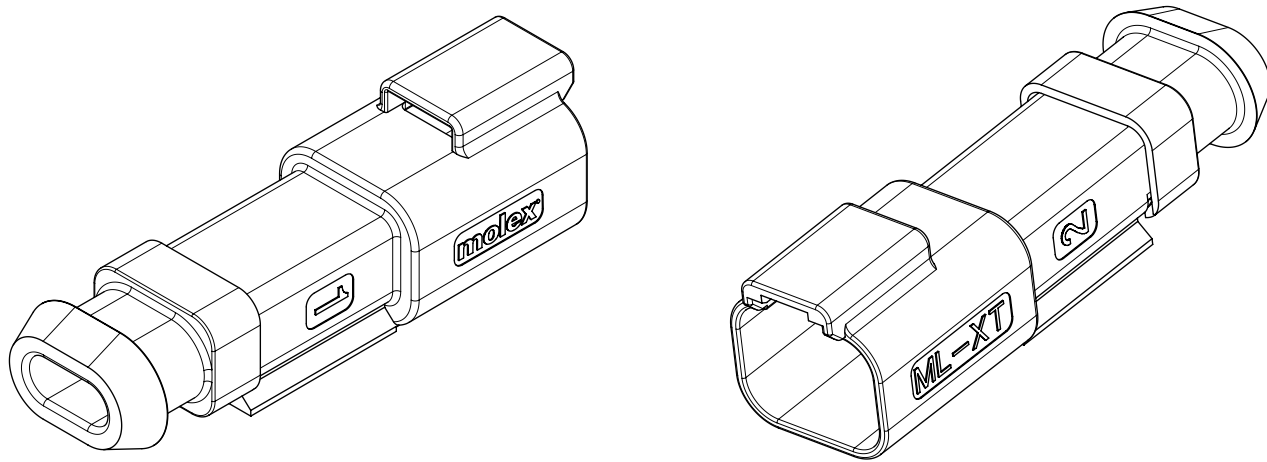
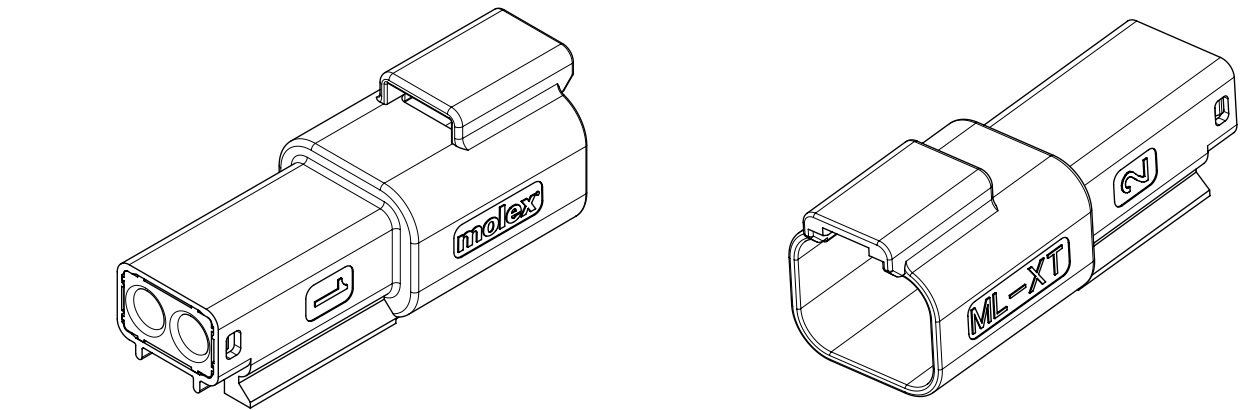


NOTES  
1. SEE SHEETS 2 TO 7 FOR UNSPECIFIED  
NOTES, DIMENSIONS AND PART NUMBERS

THIS DRAWING CONTAINS INFORMATION THAT IS PROPRIETARY TO MOLEX INCORPORATED AND SHOULD NOT BE USED WITHOUT WRITTEN PERMISSION											
SUPERSEDING SD-93443-0010 EC NO: 110489 DRWN: JFLETCHER CHK'D: FDUGGAN APPR: JDWALLACE	2016/11/16 2016/12/16 2017/01/03	QUALITY SYMBOLS		GENERAL TOLERANCES (UNLESS SPECIFIED)		DIMENSION UNITS	SCALE	<b>molex</b>			
		= 0		ANGULAR TOL ± 2.0 °		MM	2:1				
		= 0		4 PLACES ±		DRWN BY	DATE	2CCT ML-XT CV CONNECTOR			
		= 0		3 PLACES ±		KREILLY	2015/06/12				
		= 0		2 PLACES ± 0.1		CHK'D BY	DATE	PRODUCT CUSTOMER DRAWING			
		= 0		1 PLACE ± 0.2		FDUGGAN	2015/09/14				
A3	REV	= 0		0 PLACES ±		APPR BY	DATE	SERIES	MATERIAL NUMBER	CUSTOMER	
		= 0		DRAFT WHERE APPLICABLE MUST REMAIN WITHIN DIMENSIONS		JDWALLACE	2015/09/15	93443	SEE NOTES	GENERAL MARKET	
		= 0				DRAWING SIZE	THIRD ANGLE PROJECTION	DOCUMENT NUMBER		DOC TYPE	DOC PART
						A3		934430010		PSD	000
								SHEET NUMBER		1 OF 9	

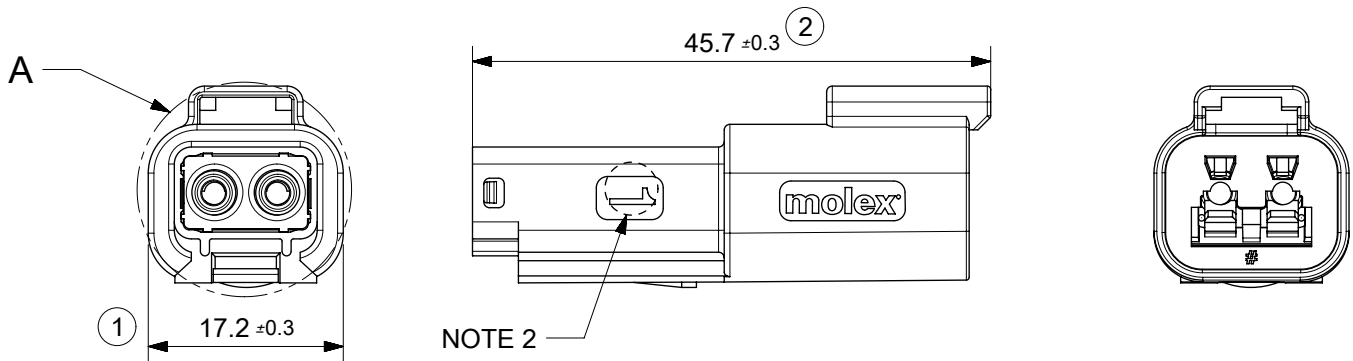
2CCT RECEPTACLE CONNECTOR

2CCT RECEPTACLE CONNECTOR WITH  
HEATSHRINK HOUSING ULTRASONICALLY  
WELDED IN PLACE



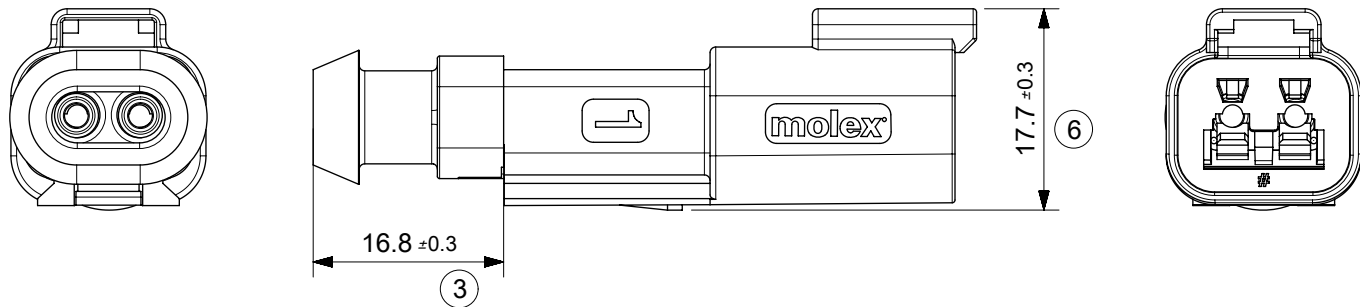
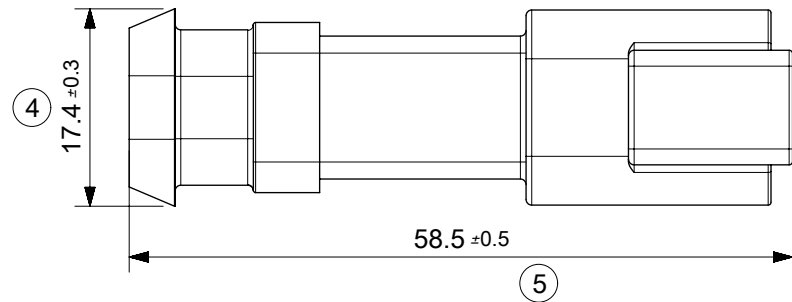
DATE CODE: X XX XX  
X — DAY: 1- 7  
  
X — WEEK: 01 - 52  
X — YEAR: 00 - 99  
X — MACHINE NO. 1  
  
EXAMPLE: 11315 = DAY 1, WEEK 13, YEAR 15  
i.e. 23rd OF MARCH 2015

(ROTATED 90°)  
DETAIL A  
SCALE 3:1



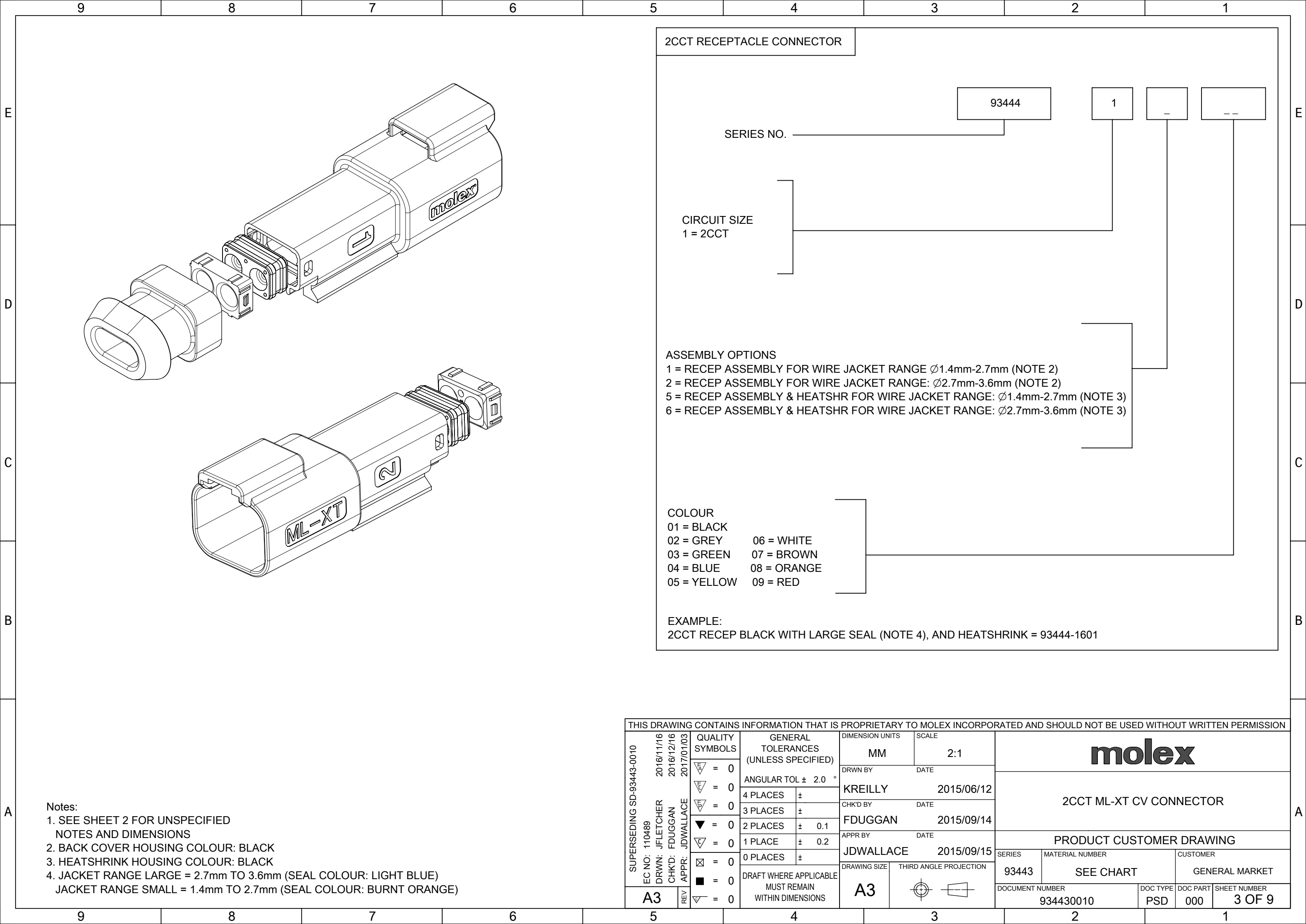
NOTE 2

- NOTES:
- MATERIAL  
HOUSING: NYLON 30%GF  
BACK SEAL: HIGH CONSISTENCY RUBBER
  - CIRCUIT IDENTIFICATION
  - JACKET RANGE LARGE = 2.7mm TO 3.6mm (SEAL COLOUR: LIGHT BLUE)  
JACKET RANGE SMALL = 1.4mm TO 2.7mm (SEAL COLOUR: BURNT ORANGE)
  - SEE SHEET 3 FOR FINAL PART NUMBER DESIGNATION
  - SEE 934430010 PS P FOR PRODUCT SPECIFICATION
  - SEE 934430002 PS K OR 934430010 PS K FOR PACKAGING SPECIFICATION
- LAST INSPECTION NUMBER: 6  
INSPECTION NUMBERS 1-50 RESERVED FOR SHEET 2



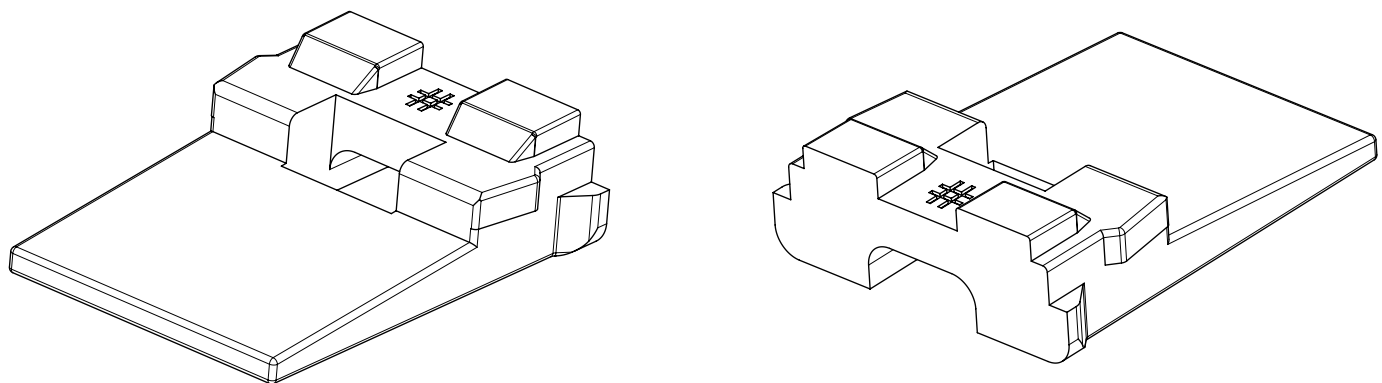
THIS DRAWING CONTAINS INFORMATION THAT IS PROPRIETARY TO MOLEX INCORPORATED AND SHOULD NOT BE USED WITHOUT WRITTEN PERMISSION

SUPERSEDING SD-93443-0010		EC NO: 110489		DRWN: JFLETCHER		2016/11/16		2016/12/16		2017/01/03		QUALITY SYMBOLS		GENERAL TOLERANCES (UNLESS SPECIFIED)		DIMENSION UNITS		SCALE		<div>molex</div> <div>2CCT ML-XT CV CONNECTOR</div> <div>PRODUCT CUSTOMER DRAWING</div> <table><tr><td colspan="2">SERIES</td><td colspan="2">MATERIAL NUMBER</td><td colspan="2">CUSTOMER</td></tr><tr><td colspan="2">93443</td><td colspan="2">SEE SHEET 3</td><td colspan="2">GENERAL MARKET</td></tr><tr><td colspan="4">DOCUMENT NUMBER</td><td colspan="1">DOC TYPE</td><td colspan="1">DOC PART</td><td colspan="1">SHEET NUMBER</td></tr><tr><td colspan="4">934430010</td><td colspan="1">PSD</td><td colspan="1">000</td><td colspan="1">2 OF 9</td></tr></table>						SERIES		MATERIAL NUMBER		CUSTOMER		93443		SEE SHEET 3		GENERAL MARKET		DOCUMENT NUMBER				DOC TYPE	DOC PART	SHEET NUMBER	934430010				PSD	000	2 OF 9
																SERIES		MATERIAL NUMBER								CUSTOMER																									
																93443		SEE SHEET 3								GENERAL MARKET																									
																DOCUMENT NUMBER										DOC TYPE	DOC PART	SHEET NUMBER																							
934430010				PSD	000	2 OF 9																																													
MM		1.5:1																																																	
DRWN BY				DATE																																															
KREILLY				2015/06/12																																															
CHK'D BY				DATE																																															
FDUGGAN				2015/09/14																																															
APPR BY				DATE																																															
JDWALLACE				2015/09/15																																															
DRAWING SIZE		THIRD ANGLE PROJECTION																																																	
A3																																																			

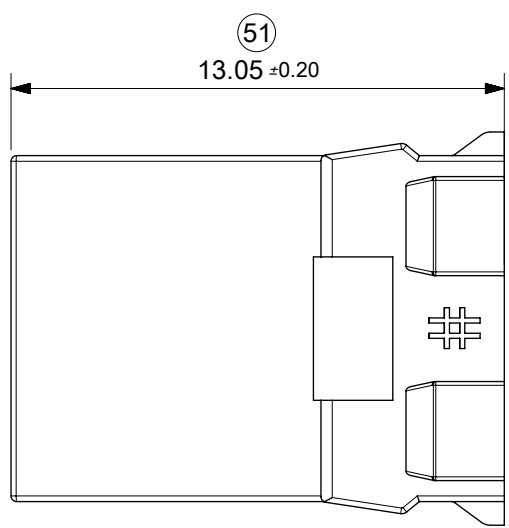


987654321

E

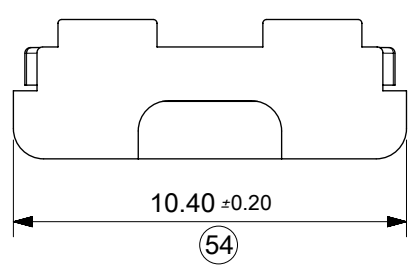
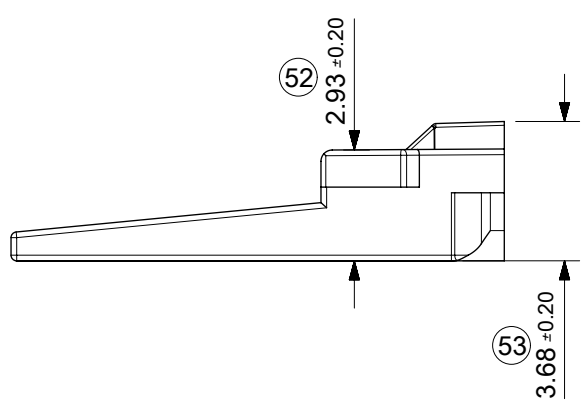


D



C

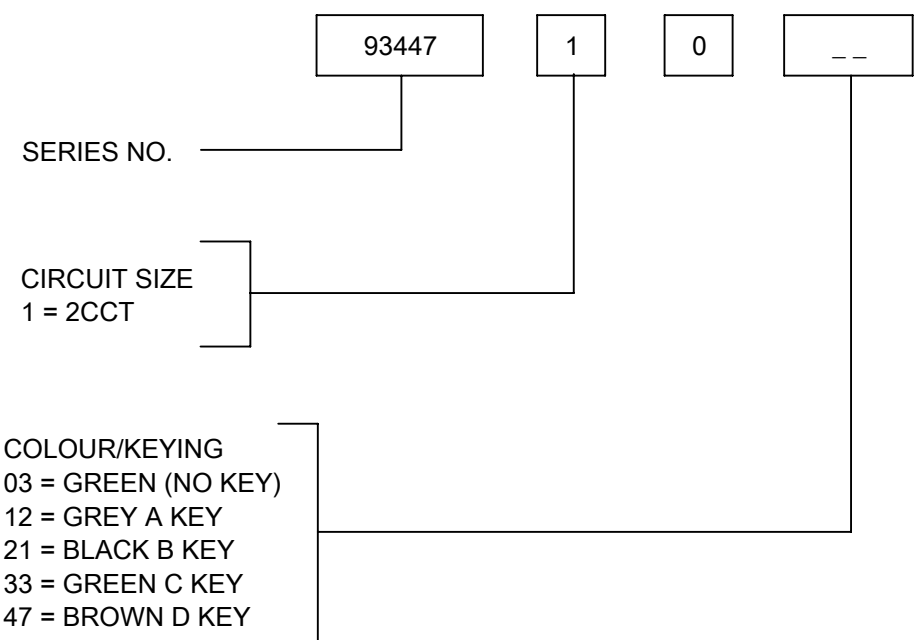
B






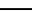


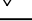
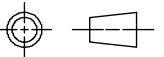


A

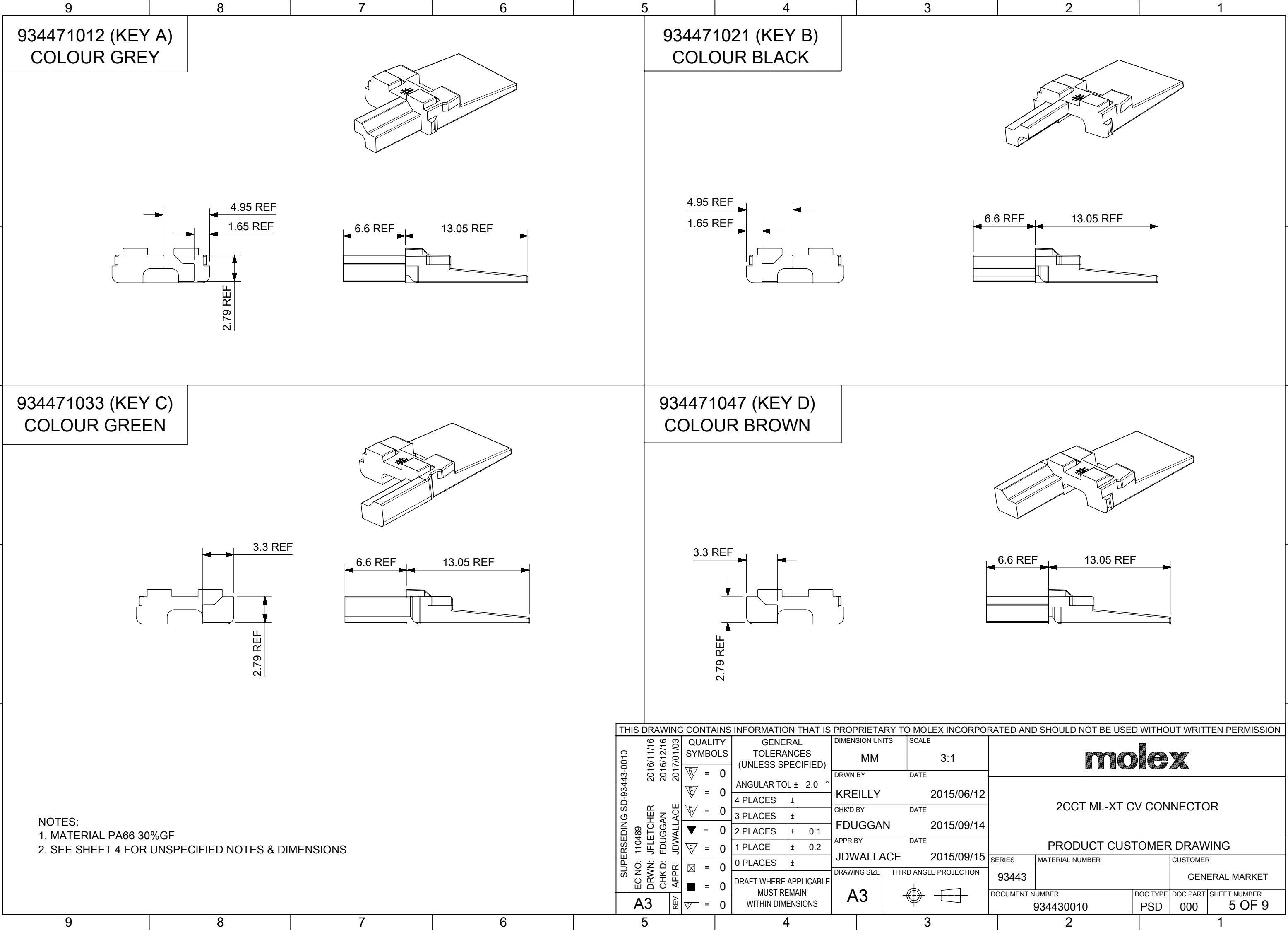
NOTES  
1. MATERIAL  
HOUSING: NYLON 30%GF  
2. INSPECTION NUMBERS 51-100  
RESERVED FOR SHEET 4  
3. PART NUMBER 934471003 SHOWN  
LAST INSPECTION NUMBER 54

2CCT RECEP. WEDGELOCK



THIS DRAWING CONTAINS INFORMATION THAT IS PROPRIETARY TO MOLEX INCORPORATED AND SHOULD NOT BE USED WITHOUT WRITTEN PERMISSION																		
SUPERSEDING SD-93443-0010  EC NO: 110489 DRWN: JFLETCHER CHK'D: FDUGGAN APPR: JDWALLACE	2016/11/16	2016/12/16	2017/01/03	QUALITY SYMBOLS	GENERAL TOLERANCES (UNLESS SPECIFIED)  ANGULAR TOL ± 2.0 °		DIMENSION UNITS		SCALE		<div>molex</div>							
	 = 0	MM		5:1														
	 = 0	DRWN BY					DATE		2CCT ML-XT CV CONNECTOR									
	 = 0	KREILLY					2015/06/12											
	 = 0	CHK'D BY					DATE											
	 = 0	4 PLACES		±		FDUGGAN				2015/09/14		PRODUCT CUSTOMER DRAWING						
	 = 0	3 PLACES		±		APPR BY				DATE								
	 = 0	2 PLACES		± 0.1		JDWALLACE				2015/09/15		SERIES		MATERIAL NUMBER		CUSTOMER		
	 = 0	1 PLACE		± 0.2		DRAWING SIZE				THIRD ANGLE PROJECTION		93443		SEE CHART		GENERAL MARKET		
	 = 0	0 PLACES		±		A3						DOCUMENT NUMBER		DOC TYPE		DOC PART		SHEET NUMBER
A3		REV			DRAFT WHERE APPLICABLE MUST REMAIN WITHIN DIMENSIONS						934430010		PSD		000		4 OF 9	

987654321



934471012 (KEY A)  
COLOUR GREY

934471021 (KEY B)  
COLOUR BLACK

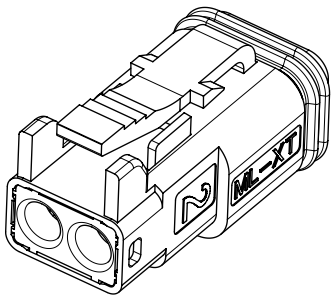
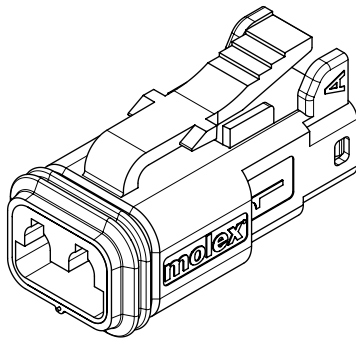
934471033 (KEY C)  
COLOUR GREEN

934471047 (KEY D)  
COLOUR BROWN

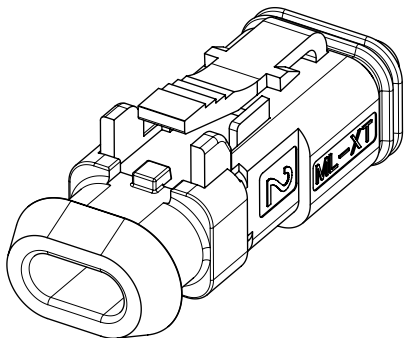
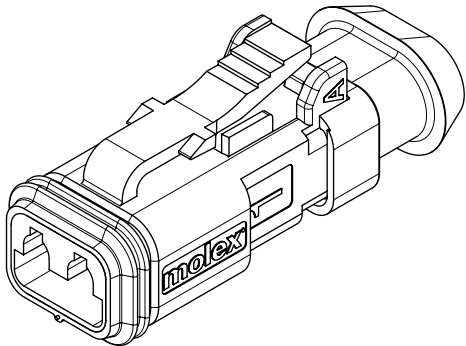
NOTES:  
1. MATERIAL PA66 30%GF  
2. SEE SHEET 4 FOR UNSPECIFIED NOTES & DIMENSIONS

THIS DRAWING CONTAINS INFORMATION THAT IS PROPRIETARY TO MOLEX INCORPORATED AND SHOULD NOT BE USED WITHOUT WRITTEN PERMISSION																			
SUPERSEDING SD-93443-0010 EC NO: 110489 DRWN: JFLETCHER CHK'D: FDUGGAN APPR: JDWALLACE		REV	QUALITY SYMBOLS	GENERAL TOLERANCES (UNLESS SPECIFIED)		DIMENSION UNITS		SCALE		<div>molex</div>									
						MM		3:1											
						ANGULAR TOL ± 2.0 °				DRWN BY		DATE		2CCT ML-XT CV CONNECTOR					
										KREILLY		2015/06/12							
						4 PLACES ±				CHK'D BY		DATE		PRODUCT CUSTOMER DRAWING					
										FDUGGAN		2015/09/14							
						3 PLACES ±				APPR BY		DATE		GENERAL MARKET					
										JDWALLACE		2015/09/15							
A3		REV	QUALITY SYMBOLS	DRAFT WHERE APPLICABLE MUST REMAIN WITHIN DIMENSIONS		DRAWING SIZE		THIRD ANGLE PROJECTION		SERIES		MATERIAL NUMBER		CUSTOMER					
						A3				93443		934430010		GENERAL MARKET					
										DOCUMENT NUMBER		DOC TYPE		DOC PART		SHEET NUMBER			
										934430010		PSD		000		5 OF 9			

2CCT PLUG CONNECTOR



2CCT PLUG CONNECTOR WITH  
HEATSHRINK HOUSING ULTRA  
SONICALLY WELDED IN PLACE



DATE CODE: X XX XX

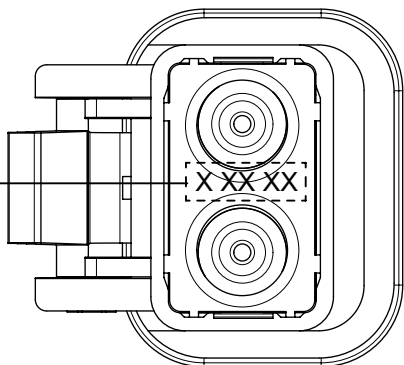
X — DAY: 1 - 7

X — WEEK: 01 - 52

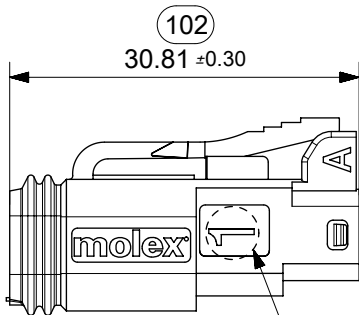
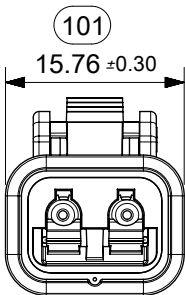
X — YEAR: 00 - 99

# — MACHINE NO. 1

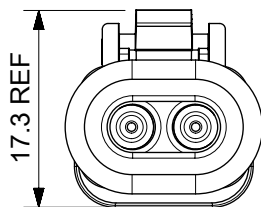
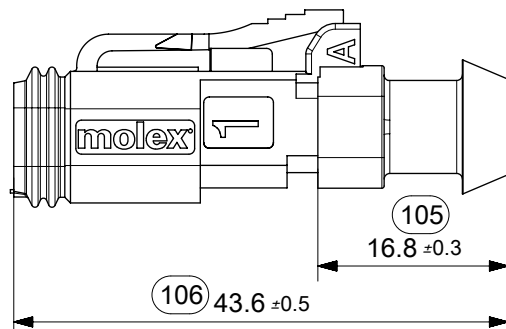
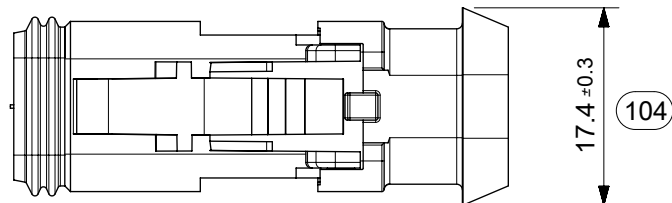
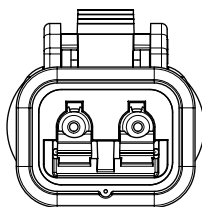
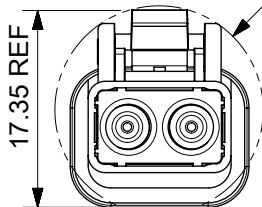
EXAMPLE: 11315 = DAY 1, WEEK 13, YEAR 15  
i.e. 23RD OF MARCH 2015



(ROTATED 90°)  
DETAIL B  
SCALE 3:1



NOTE 2

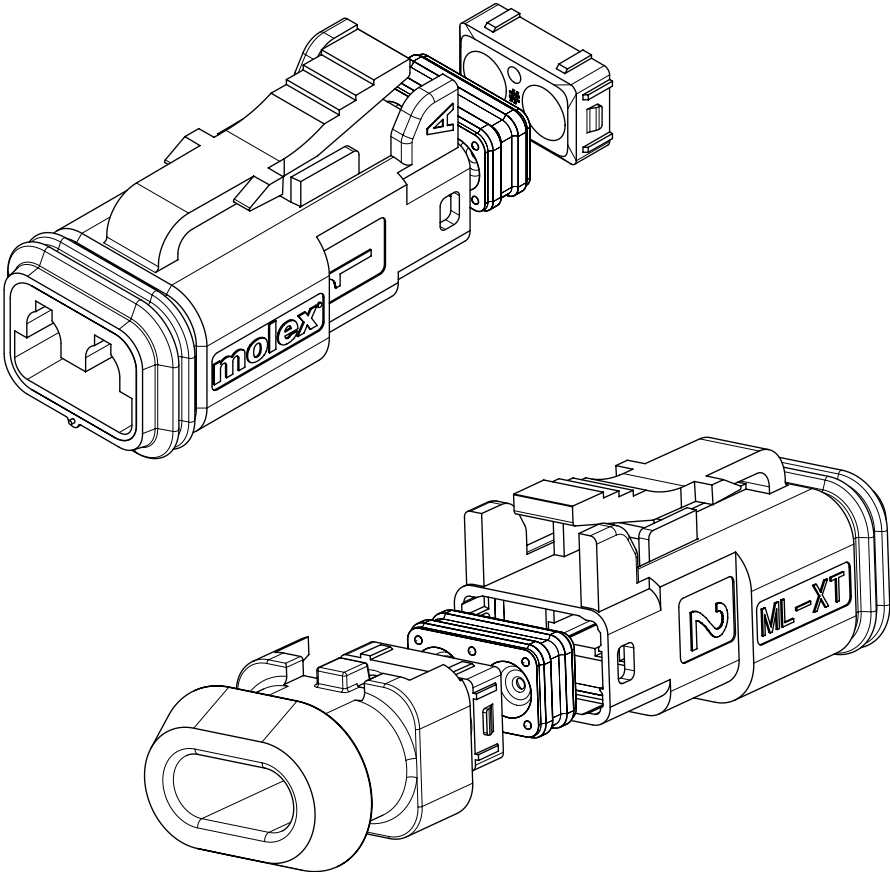


NOTES

- MATERIAL  
HOUSING: NYLON 30%GF  
PLUG SEAL: SILICONE RUBBER  
BACK SEAL: HIGH CONSISTENCY RUBBER
- CIRCUIT IDENTIFICATION
- JACKET RANGE LARGE = 2.7mm TO 3.6mm (SEAL COLOUR: LIGHT BLUE)  
JACKET RANGE SMALL = 1.4mm TO 2.7mm (SEAL COLOUR: BURNT ORANGE)
- SEE SHEET 7 FOR FINAL PART NUMBER DESIGNATION
- INSPECTION NUMBERS 101-150 RESERVED FOR SHEET 6  
LAST INSPECTION NUMBER 106.  
INSPECTION NUMBERS 103 & 107 DELETED.

THIS DRAWING CONTAINS INFORMATION THAT IS PROPRIETARY TO MOLEX INCORPORATED AND SHOULD NOT BE USED WITHOUT WRITTEN PERMISSION

SUPERSEDING SD-93443-0010		EC NO: 110489	DRWN: JFLETCHER	2016/11/16	CHK'D: FDUGGAN	2016/12/16	APPR: JDWALLACE	2017/01/03	QUALITY SYMBOLS	GENERAL TOLERANCES (UNLESS SPECIFIED)		DIMENSION UNITS		SCALE		<div>molex</div>					
									<div><div>▽</div> = 0</div>	ANGULAR TOL ± 2.0 °		MM		1.5:1							
									<div><div>▽</div> = 0</div>	4 PLACES ±		DRWN BY		DATE		2CCT ML-XT CV CONNECTOR					
									<div><div>▽</div> = 0</div>	3 PLACES ±		KREILLY		2015/06/12							
									<div><div>▼</div> = 0</div>	2 PLACES ± 0.1		CHK'D BY		DATE							
<div><div>▽</div> = 0</div>	1 PLACE ± 0.2		FDUGGAN		2015/09/14		PRODUCT CUSTOMER DRAWING														
<div><div>☒</div> = 0</div>	0 PLACES ±		APPR BY		DATE																
<div><div>■</div> = 0</div>	DRAFT WHERE APPLICABLE		JDWALLACE		2015/09/15		SERIES		MATERIAL NUMBER		CUSTOMER										
<div><div>▽</div> = 0</div>	MUST REMAIN WITHIN DIMENSIONS		DRAWING SIZE		THIRD ANGLE PROJECTION		93443		SEE SHEET 7		GENERAL MARKET										
A3		A3		<div><div><div></div></div><div><div></div></div></div>		DOCUMENT NUMBER		DOC TYPE		DOC PART		SHEET NUMBER									
						934430010		PSD		000		6 OF 9									



2CCT PLUG CONNECTOR

SERIES NO.

93445

1

-

--

CIRCUIT SIZE  
1 = 2CCT

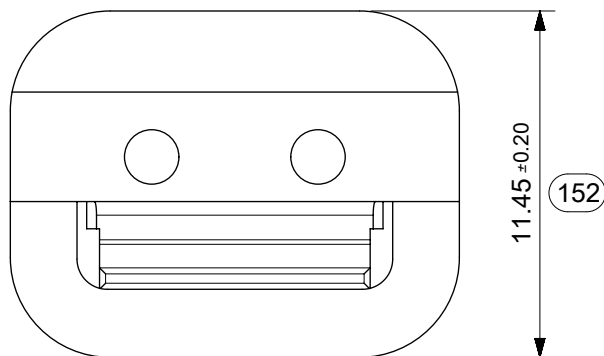
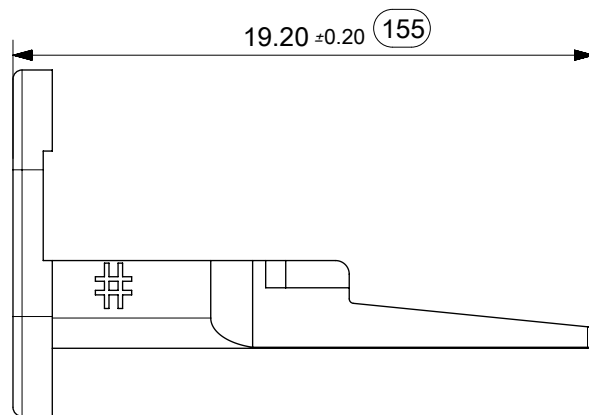
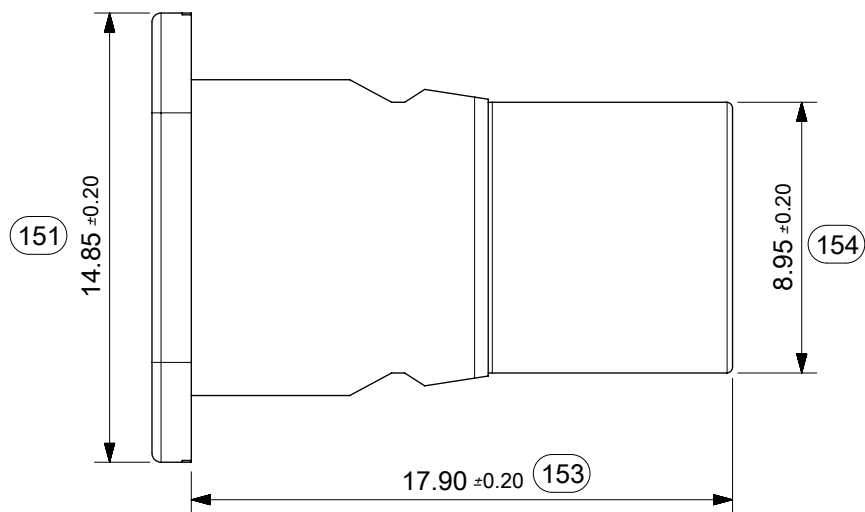
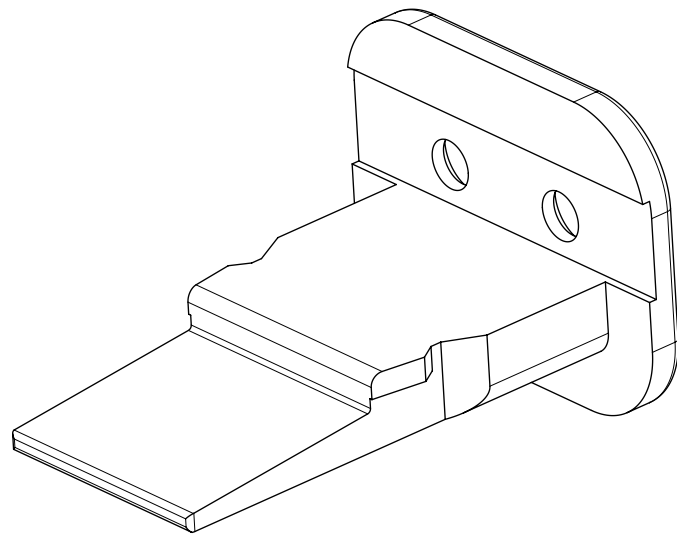
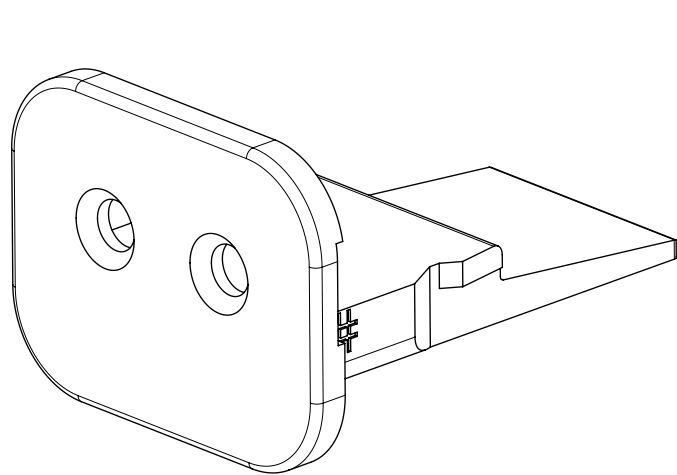
- KEYING/ASSY OPTIONS
- 1 = PLUG ASSEMBLY FOR WIRE JACKET RANGE Ø1.4mm-2.7mm (NOTE 2)
  - 2 = PLUG ASSEMBLY FOR WIRE JACKET RANGE: Ø2.7mm-3.6mm (NOTE 2)
  - 5 = PLUG ASSEMBLY & HEATSHR FOR WIRE JACKET RANGE: Ø1.4mm-2.7mm (NOTE 3)
  - 6 = PLUG ASSEMBLY & HEATSHR FOR WIRE JACKET RANGE: Ø2.7mm-3.6mm (NOTE 3)

- COLOUR
- |            |             |
|------------|-------------|
| 01 = BLACK | 06 = WHITE  |
| 02 = GREY  | 07 = BROWN  |
| 03 = GREEN | 08 = ORANGE |
| 04 = BLUE  | 09 = RED    |

EXAMPLE:  
2CCT PLUG BLACK WITH LARGE SEAL (NOTE 4), AND HEATSHRINK = 93445-1601

- Notes:
- 1. SEE SHEET 2 FOR UNSPECIFIED NOTES AND DIMENSIONS
  - 2. BACK COVER HOUSING COLOUR: BLACK
  - 3. HEATSHRINK HOUSING COLOUR: BLACK
  - 4. JACKET RANGE LARGE = 2.7mm TO 3.6mm (SEAL COLOUR: LIGHT BLUE)  
JACKET RANGE SMALL = 1.4mm TO 2.7mm (SEAL COLOUR: BURNT ORANGE)

THIS DRAWING CONTAINS INFORMATION THAT IS PROPRIETARY TO MOLEX INCORPORATED AND SHOULD NOT BE USED WITHOUT WRITTEN PERMISSION																
SUPERSEDING SD-93443-0010		EC NO: 110489	DRWN: JFLETCHER	2016/11/16	CHK'D: FDUGGAN	2016/12/16	APPR: JDWALLACE	2017/01/03	QUALITY SYMBOLS	GENERAL TOLERANCES (UNLESS SPECIFIED)		DIMENSION UNITS	SCALE	<div>molex</div>		
									<div><div></div></div> = 0	ANGULAR TOL ± 2.0 °	4 PLACES	±	MM			
									<div><div></div></div> = 0							
									<div><div></div></div> = 0					3 PLACES	±	
									<div><div></div></div> = 0							
<div><div></div></div> = 0	2 PLACES	±	0.1													
<div><div></div></div> = 0				1 PLACE	±	0.2										
<div><div></div></div> = 0							0 PLACES	±								
<div><div></div></div> = 0																
<div><div></div></div> = 0	DRAFT WHERE APPLICABLE MUST REMAIN WITHIN DIMENSIONS		A3						<div><div></div><div></div></div>	PRODUCT CUSTOMER DRAWING						
<div><div></div></div> = 0	SERIES	MATERIAL NUMBER		CUSTOMER												
<div><div></div></div> = 0	93443	SEE CHART		GENERAL MARKET												
<div><div></div></div> = 0	DOCUMENT NUMBER	DOC TYPE		DOC PART	SHEET NUMBER											
<div><div></div></div> = 0	934430010	PSD		000	7 OF 9											



# 2CCT PLUG WEDGELOCK

SERIES NO.

93448

CIRCUIT SIZE  
1 = 2CCT

1

0

--

COLOUR/KEYING  
03 = GREEN (NO KEY)  
12 = GREY A KEY  
21 = BLACK B KEY  
33 = GREEN C KEY  
47 = BROWN D KEY

NOTES  
1. MATERIAL  
HOUSING: NYLON 30%GF  
2. INSPECTION NUMBERS 151-200 RESERVED FOR SHEET 8  
3. PART NUMBER 934481003 SHOWN  
LAST INSPECTION NUMBER 155

THIS DRAWING CONTAINS INFORMATION THAT IS PROPRIETARY TO MOLEX INCORPORATED AND SHOULD NOT BE USED WITHOUT WRITTEN PERMISSION																		
SUPERSEDING SD-93443-0010 EC NO: 110489 DRWN: JFLETCHER CHK'D: FDUGGAN APPR: JDWALLACE		2016/11/16 2016/12/16 2017/01/03	QUALITY SYMBOLS	GENERAL TOLERANCES (UNLESS SPECIFIED)		DIMENSION UNITS		SCALE		<div>molex</div>								
						MM		4:1										
						ANGULAR TOL ± 2.0 °				DRWN BY		DATE		2CCT ML-XT CV CONNECTOR				
										KREILLY		2015/06/12						
						4 PLACES ±				CHK'D BY		DATE		PRODUCT CUSTOMER DRAWING				
FDUGGAN		2015/09/14																
A3		REV	QUALITY SYMBOLS	GENERAL TOLERANCES (UNLESS SPECIFIED)		APPR BY		DATE		SERIES								
						JDWALLACE		2015/09/15							MATERIAL NUMBER			
						DRAFT WHERE APPLICABLE MUST REMAIN WITHIN DIMENSIONS		DRAWING SIZE		THIRD ANGLE PROJECTION								
								A3							GENERAL MARKET			
								DRAFT WHERE APPLICABLE MUST REMAIN WITHIN DIMENSIONS				DOCUMENT NUMBER						
934430010																		
					PSD													
										000								
8 OF 9																		



