



SAW Components

Data Sheet B9024

Data Sheet

A large, stylized, and somewhat abstract graphic of the EPCOS logo. The word "EPCOS" is rendered in a bold, sans-serif font, with the letters appearing to be part of a larger, curved structure that resembles a stylized globe or a series of overlapping planes. The graphic is in grayscale and has a high-contrast, almost glowing appearance.



SAW Components

B9024

Low-Loss Filter for Mobile Communication

942,5 MHz

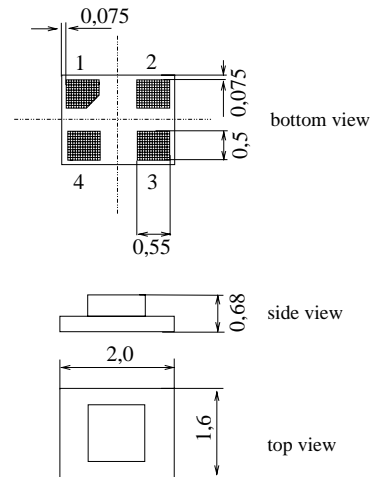
Data Sheet



Features

- Low-loss RF filter for mobile telephone EGSM system, receive path
- Usable passband 35 MHz
- Unbalanced operation
- Impedance 50 Ω input and output
- Ceramic Package for **Surface Mounted Technology (SMT)**

Chip sized SAW package DCS4F



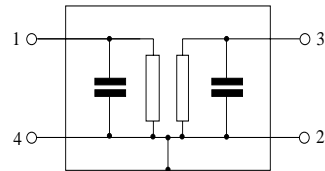
Terminals

- Ni, gold-plated

Dimensions in mm, approx. weight 6 mg

Pin configuration

- 1 Input, unbalanced
- 3 Output, unbalanced
- 2,4 Case ground



Type	Ordering code	Marking and Package according to	Packing according to
B9024	B39941-B9024-E610	C61157-A7-A113	F61074-V8152-Z000

Electrostatic Sensitive Device (ESD)

Maximum ratings

Operable temperature range	T	- 30 / + 85	$^{\circ}\text{C}$	machine model, 10 pulses peak power of GSM signal, duty cycle 4:8
Storage temperature range	T_{stg}	- 40 / + 85	$^{\circ}\text{C}$	
DC voltage	V_{DC}	3	V	
ESD voltage	V_{ESD}^*	100*	V	
Input power at GSM850, GSM900 GSM1800 and GSM1900 Tx bands	P_{IN}	15	dBm	

* acc. to JESD22-A115A (Machine Model), 10 negative & 10 positive pulses



SAW Components

B9024

Low-Loss Filter for Mobile Communication

942,5 MHz

Data Sheet



Characteristics

Operating temperature: $T = -25 \dots +75 \text{ }^{\circ}\text{C}$

Terminating source impedance: $Z_S = 50 \text{ } \Omega$

Terminating load impedance: $Z_L = 50 \text{ } \Omega$

		min.	typ. (25 °C)	max.	
Center frequency	f_C	—	942,5	—	MHz
Maximum insertion attenuation	α_{\max}				
925,0 ... 960,0 MHz		—	1,9	2,5	dB
Amplitude ripple (p-p)	$\Delta\alpha$				
925,0 ... 960,0 MHz		—	0,9	1,5	dB
Input VSWR					
925,0 ... 960,0 MHz		—	2,1	2,4	
Output VSWR					
925,0 ... 960,0 MHz		—	2,2	2,4	
Attenuation	α				
0,0 ... 890,0 MHz		33	38	—	dB
890,0 ... 905,0 MHz		25	31	—	dB
905,0 ... 915,0 MHz		19	26	—	dB
980,0 ... 1015,0 MHz		23	25	—	dB
1015,0 ... 1025,0 MHz		25	32	—	dB
1025,0 ... 2500,0 MHz		30	35	—	dB
2500,0 ... 6000,0 MHz		30	42	—	dB



SAW Components

B9024

Low-Loss Filter for Mobile Communication

942,5 MHz

Data Sheet



Characteristics

Operating temperature: $T = -30 \dots +85 \text{ }^{\circ}\text{C}$

Terminating source impedance: $Z_S = 50 \text{ } \Omega$

Terminating load impedance: $Z_L = 50 \text{ } \Omega$

			min.	typ. (25 °C)	max.	
Center frequency	f_C		—	942,5	—	MHz
Maximum insertion attenuation	α_{\max}					
	925,0 ... 960,0 MHz		—	1,9	2,8	dB
Amplitude ripple (p-p)	$\Delta\alpha$					
	925,0 ... 960,0 MHz		—	0,9	1,8	dB
Input VSWR						
	925,0 ... 960,0 MHz		—	2,1	2,4	
Output VSWR						
	925,0 ... 960,0 MHz		—	2,2	2,4	
Attenuation	α					
	0,0 ... 890,0 MHz		33	38	—	dB
	890,0 ... 905,0 MHz		25	31	—	dB
	905,0 ... 915,0 MHz		19	26	—	dB
	980,0 ... 1015,0 MHz		23	25	—	dB
	1015,0 ... 1025,0 MHz		25	32	—	dB
	1025,0 ... 2500,0 MHz		30	35	—	dB
	2500,0 ... 6000,0 MHz		30	42	—	dB



SAW Components

B9024

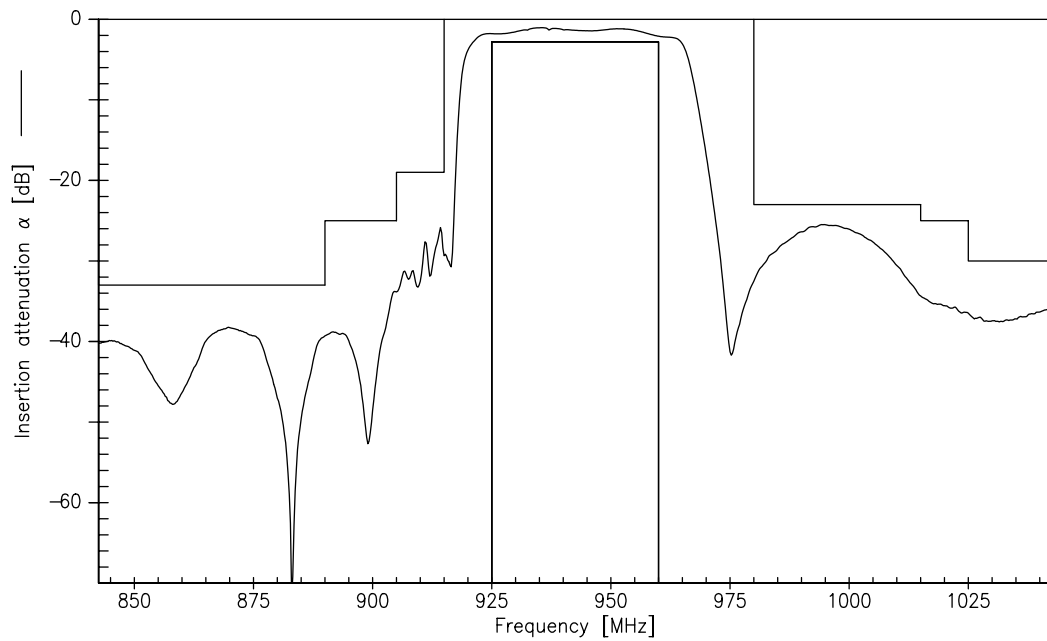
Low-Loss Filter for Mobile Communication

942,5 MHz

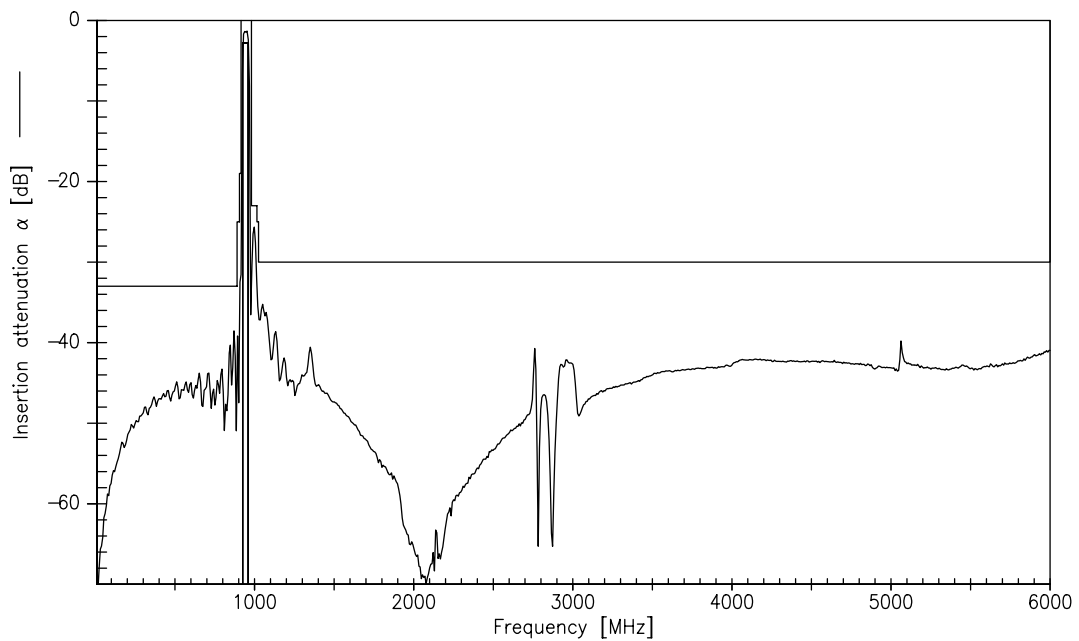
Data Sheet



Transfer function (measurement)



Transfer function (wideband measurement)





SAW Components	B9024
Low-Loss Filter for Mobile Communication	942,5 MHz
Data Sheet	SMD

Published by EPCOS AG

Surface Acoustic Wave Components Division, SAW MC WT

P.O. Box 80 17 09, D-81617 München

© EPCOS AG 2005. Reproduction, publication and dissemination of this brochure and the information contained therein without EPCOS' prior express consent is prohibited.

Purchase orders are subject to the General Conditions for the Supply of Products and Services of the Electrical and Electronics Industry recommended by the ZVEI (German Electrical and Electronic Manufacturers' Association), unless otherwise agreed.

This brochure replaces the previous edition.

For questions on technology, prices and delivery please contact the Sales Offices of EPCOS AG or the international Representatives.

Due to technical requirements components may contain dangerous substances. For information on the type in question please also contact one of our Sales Offices.