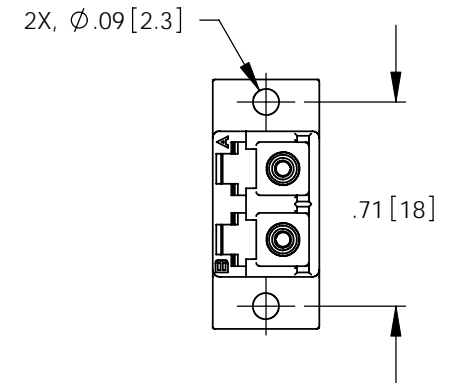
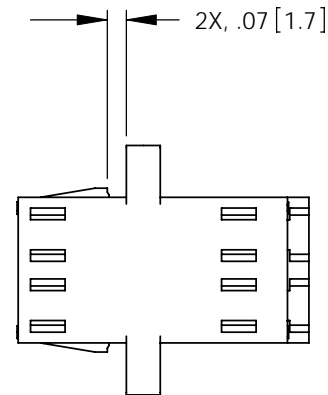
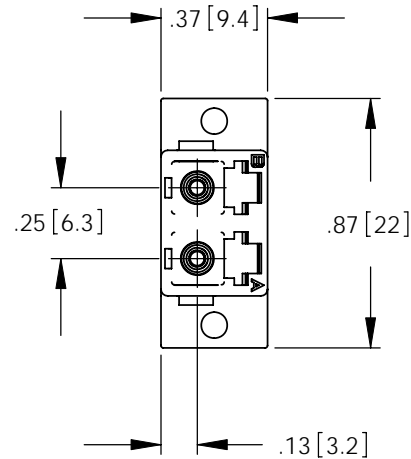
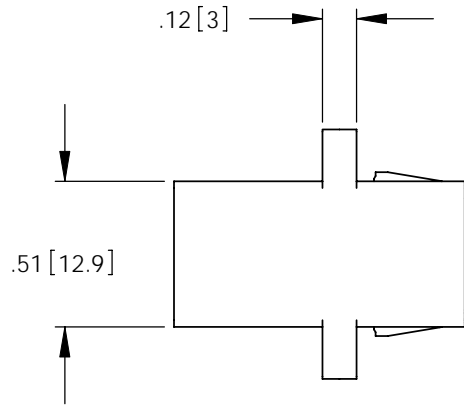
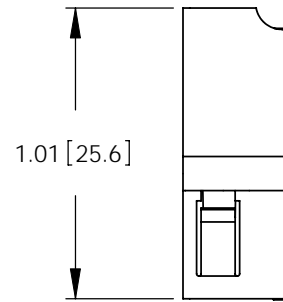


THE INFORMATION CONTAINED IN THIS DRAWING IS THE SOLE
PROPERTY OF L-COM, INC.. ANY REPRODUCTION IN PART OR WHOLE
WITHOUT THE WRITTEN PERMISSION OF L-COM, INC. IS PROHIBITED.

REVISIONS			
REV	DESCRIPTION	DATE	APPROVED
A	INITIAL RELEASE	7/30/07	D.FRISIELLO

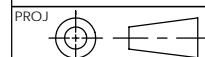


NOTES:

MATERIALS:
HOUSING MATERIAL: PVC, UL94V-0.
HOUSING COLOR: BLACK.
SLEEVE: CERAMIC.

MISCELLANEOUS:
RoHS COMPLIANT.
SHIPPED WITH DUST CAPS INSTALLED (NOT SHOWN).
OPERATING TEMPERATURE: -40 °C TO +85 °C.

DIMENSIONS ARE IN INCHES [mm]
UNLESS OTHERWISE SPECIFIED,
TOLERANCES TO BE:
.X ± .1 [2.5] ANGLES ± 2°
.XX ± .01 [.25]
.XXX ± .005 [.13]
OVERALL CABLE LENGTH TOL:
≤ 60 [1524] +3 [76.2] / - 0
> 60 [1524] +5% / -0%



APPROVALS	DATE
DRAWN BY D.FRISIELLO	7/30/07
CHECKED BY P.McNEIL	7/30/07
APPROVED BY P.McNEIL	7/30/07

CONFIGURATION DETAILS OF
UNDIMENSIONED FEATURES
MAY VARY

L-com CONNECTIVITY PRODUCTS		45 BEECHWOOD DRIVE NORTH ANDOVER, MA 01845	
CATEGORY		FIBER OPTIC	
PRODUCT DESCRIPTION		LC COUPLER, DUPLEX SINGLE MODE	
SIZE A	FSCM NO. 43321	DWG. NO. FOA-801	REV. A
SCALE: 2/1		CAD FILE: FOA-801.SLDDRW	SHEET 1 OF 1