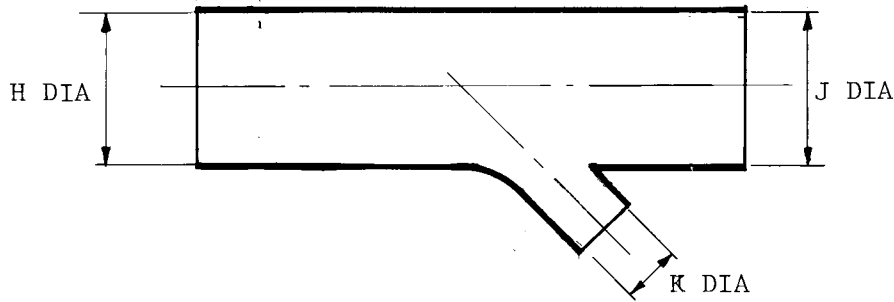
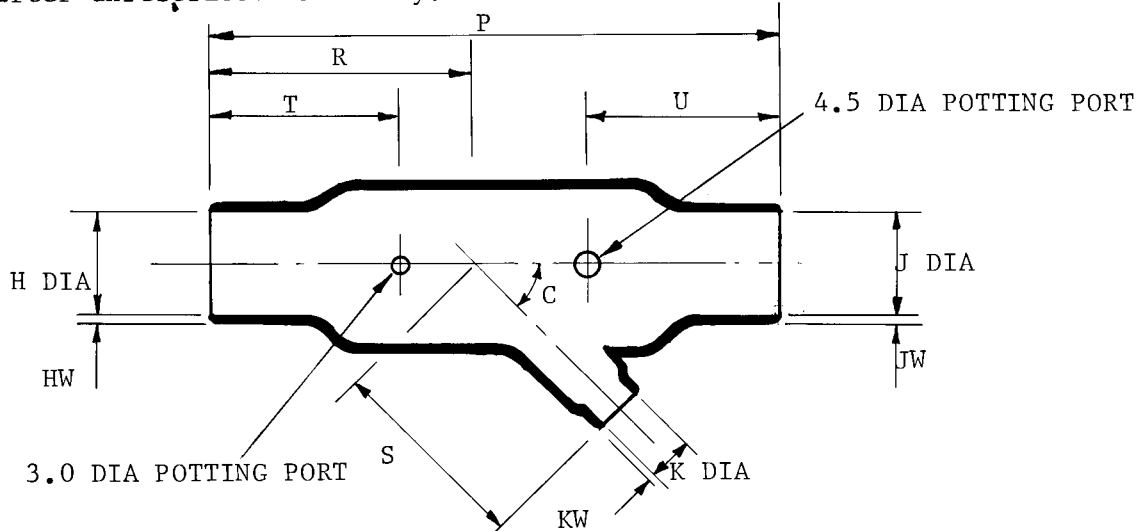


342A034 - 100

a) Part as supplied.



b) Part after unrestricted recovery.



Dimensions in millimetres

PART NO	H		J		K		P	R	S	T	U	HW/JW	KW	C
	MIN	MAX	MIN	MAX	MIN	MAX	$\frac{+10\%}{b}$	$\frac{+10\%}{b}$	$\frac{+10\%}{b}$	$\frac{+10\%}{b}$	$\frac{+10\%}{b}$	$\frac{+20\%}{b}$	$\frac{+20\%}{b}$	$\frac{+5\%}{b}$
342A034 -100	27	13.7	27	13.7	13	7.4	145	70	54	51	51	2.5	1.5	4.5

**Copyright(!)
Urheberrechte**

The copyright in this drawing is the property of Raychem Ltd. The drawing is issued on condition that it is not copied, reproduced, or disclosed to a third party, either in whole or in part without the prior written consent of Raychem Ltd.

Drawn M.HERMAN

Checked

Issue 1

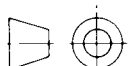
Date February '86

Conforms to ISO Recommendations
3rd Angle Projection
Not to scale

Approval
Design

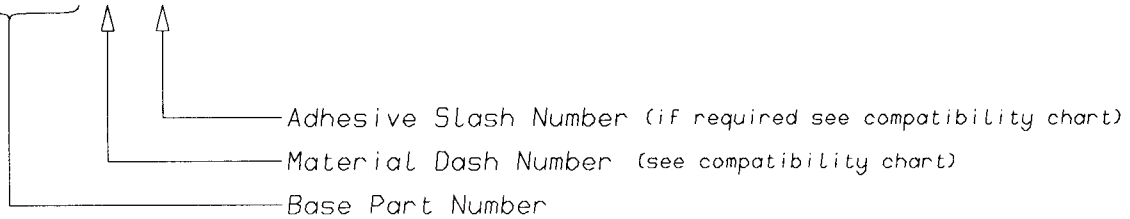
MKTG

Q.C.



Ordering Information

202A163-*/*-0



COMPATIBILITY CHART

MATERIAL DASH NUMBER	MATERIAL DESCRIPTION	COATING SLASH NUMBER
-12	VITON	N/A
-100	ZERO HALOGEN	/86,/180

AS SUPPLIED DIMENSIONS ARE FOR UNCOATED PARTS,
WHEN COATING IS ADDED, ENTRY DIAMETERS WILL REDUCE BY 1.5mm MAX.

POTTING PORTS ARE OPTIONAL
WHEN SPECIFIED BY SUFFIX "-00"
THEY WILL BE LOCATED AS SHOWN