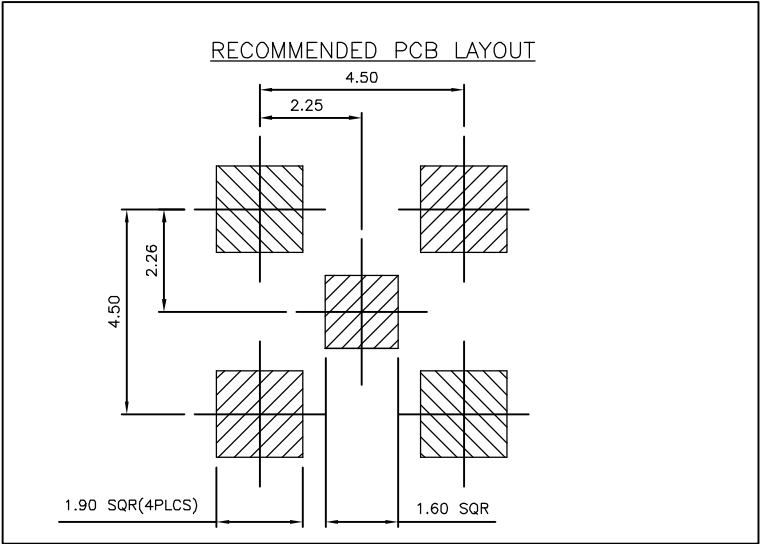
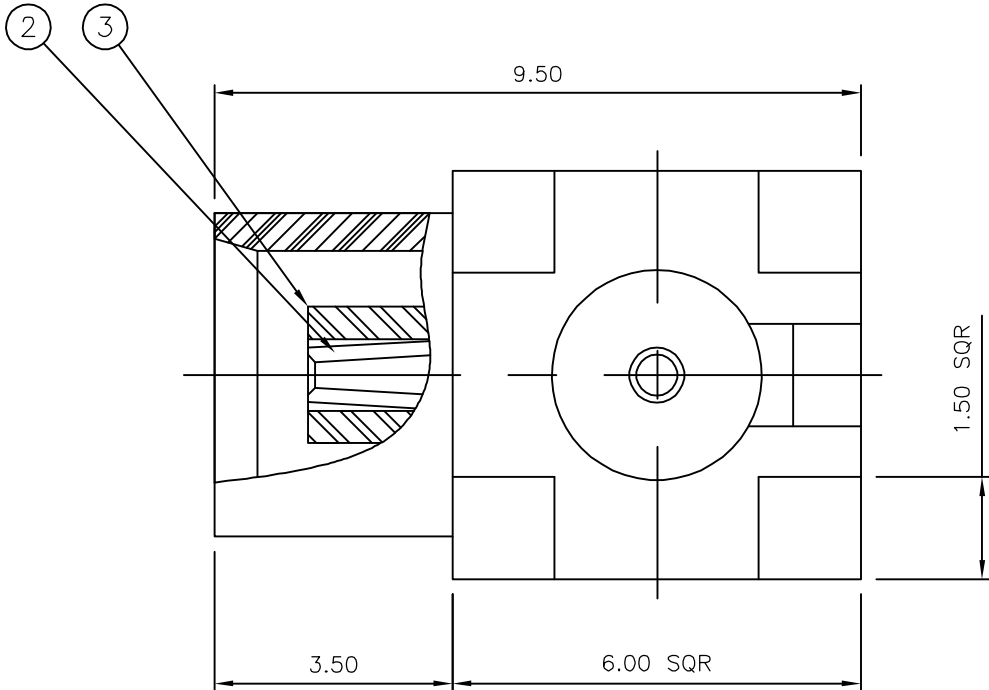
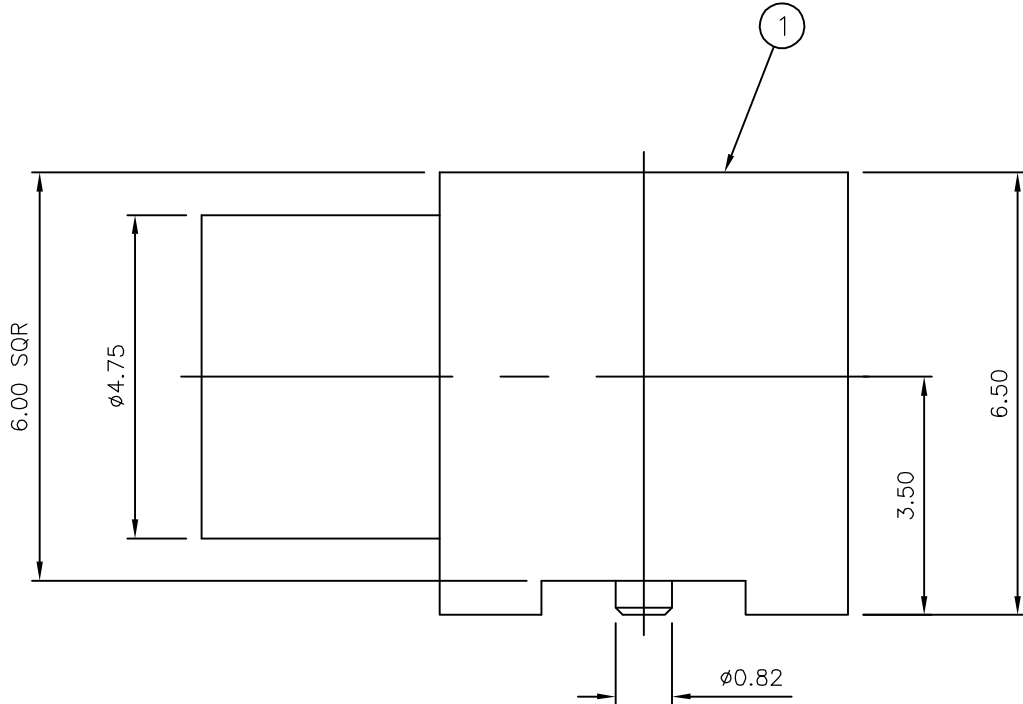


LOC E	DIST B	REVISIONS					
		P	LTR	DESCRIPTION	DATE	DWN	APVD
			D	ECR-06-024709	19OCT06	JMS	FWK

NOTES:

- 1 PACK IN ACCORDANCE WITH AMP SPEC 107-3275
- 2 TAPE AND REEL PACKAGING OPTION AS PER NOTES 11 AND 14
- 3 Au PLATING
- 4 ELECTRICAL CHARACTERISTICS
FREQUENCY RANGE: DC — 6 GHz
NOMINAL IMPEDANCE: 50 Ohm
INSULATION RESISTANCE: 1000 MOhm
WORKING VOLTAGE: 335 Volts RMS at Sea Level
DIELECTRIC WITHSTAND VOLTAGE: 1000 Volts RMS Max
CONTACT RESISTANCE: 5.00 mOhm Max
CENTRE CONTACT: 1.00 mOhm Max
VSWR @ 4GHz: N/A
INSERTION LOSS dB @ x 1.0 GHz: 0.10 Max
- 5 MECHANICAL CHARACTERISTICS
COUPLING NUT RETENTION FORCE: N/A
DURABILITY: 500 Cycles Min
- 6 ENVIRONMENTAL CHARACTERISTICS
OPERATING TEMPERATURE: -65 to +165 DegC
7. FOR TECHNICAL DATA REFER TO YOUR LOCAL TYCO ELECTRONICS SALES OFFICE
8. ALL DIMENSIONS ARE NOMINAL FOR REFERENCE ONLY UNLESS OTHERWISE STATED



		1	1	PTFE	INSULATION	3
		1	1	BERYLLIUM COPPER	CONTACT	2
		1	1	BRASS	BODY	1
		6--0	1--0	MATERIAL	DESCRIPTION	ITEM
QUANTITY PER ASSY				PARTS LIST		

THIS DRAWING IS A CONTROLLED DOCUMENT.		DWN	J.SANDWELL	02FEB06	tyco Tyco Electronics Corporation	
		CHK	S.PARLOW	02FEB06		
		APVD	F.WHEELER-KING	02FEB06	NAME	
		PRODUCT SPEC			MCX SURFACE MOUNT ELBOW PCB SOCKET 50 OHM	
		APPLICATION SPEC			-	
		WEIGHT			-	
		CUSTOMER DRAWING			SCALE	
					NTS	
					SHEET	
					1 OF 2	
					REV	
					D	

LOC	DIST	REVISIONS				
E	B	P	LTR	DESCRIPTION	DATE	APVD
			—	SEE SHEET 1	—	—

NOTES (CONT):

- 7

LAST RUNNING ACCORDING TO IEC 60286-3
- 8

BLISTER BELT FILLED WITH PARTS
- 9

400mm EMPTY BLISTER BELT, SEALED WITH COVER TAPE
- 10

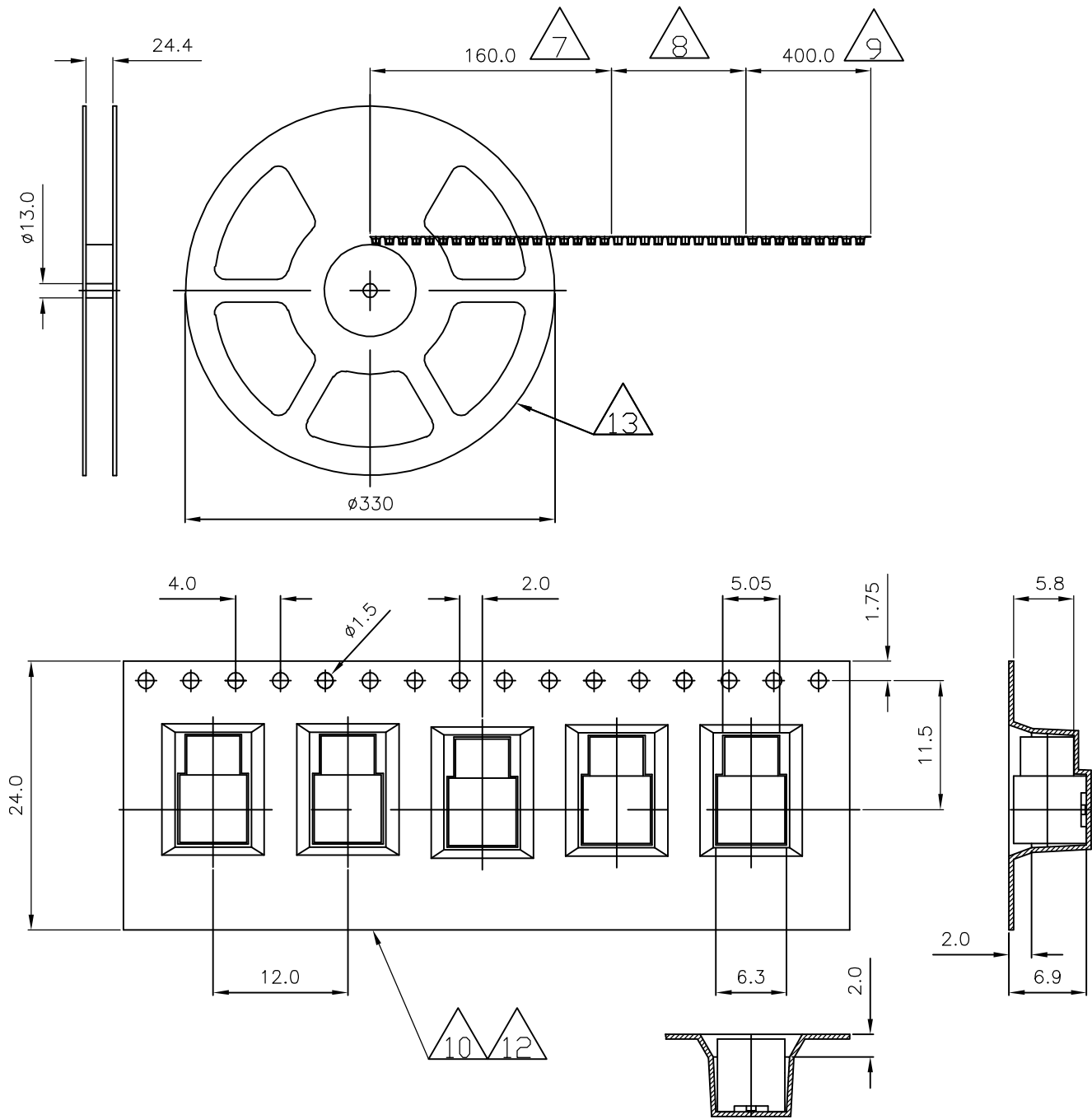
BLISTER BELT ACCORDING TO IEC 60286-3
- 11

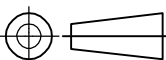
UNIT PER REEL: 750 PIECES
- 12

VOLUME-CONDUCTIVE MATERIAL
- 13

MADE FROM POLYSTYRENE
- 14

SMD-STRIP-PACKAGING ACCORDING TO IEC 60286-2



THIS DRAWING IS A CONTROLLED DOCUMENT.		DWN J.SANDWELL 02FEB06		<div>tyco</div> <div>Electronics</div>		Tyco Electronics Corporation									
		CHK S.PARLOW 02FEB06				Bideford EX39 4HE									
DIMENSIONS: mm		TOLERANCES UNLESS OTHERWISE SPECIFIED: 0 PLC ± - 1 PLC ± - 2 PLC ± - 3 PLC ± - 4 PLC ± - ANGLES ± -		NAME											
				MCX SURFACE MOUNT ELBOW PCB SOCKET 50 OHM											
				—											
				—											
				PRODUCT SPEC											
MATERIAL SEE TABLE		FINISH —		APPLICATION SPEC		SIZE		CAGE CODE	DRAWING NO	RESTRICTED TO					
				—		—		—		—					
				WEIGHT		—		A3		00779	C-1337583	—			
CUSTOMER DRAWING						SCALE		NTS		SHEET	2	OF	2	REV	D