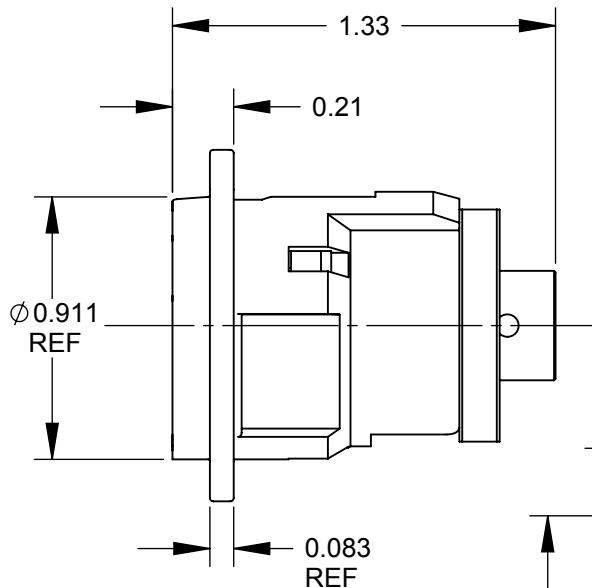


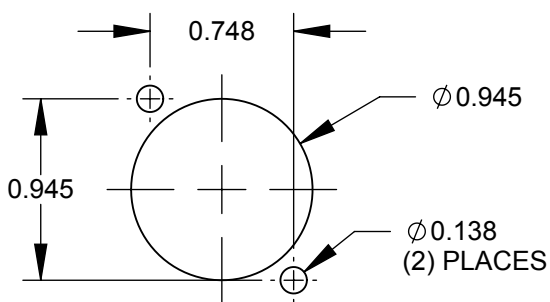
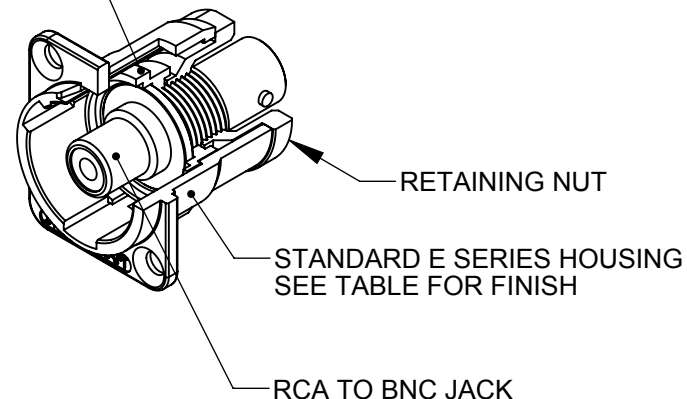
✓ $\varnothing 0.138$ THRU
 $\varnothing 0.230 \times 82^\circ$
(2) PLACES REF

NOTES:

1. MATERIALS:
HOUSING - ZINC ALLOY
HOUSING INSERT - THERMOPLASTIC, BLACK
RETAINING NUT - THERMOPLASTIC, BLACK
RCA TO BNC JACK - COPPER ALLOY, NICKEL PLATED
2. THIS PRODUCT IS RoHS COMPLIANT.



HOUSING INSERT



RECOMMENDED
PANEL CUT-OUT

PART NUMBER	HOUSING FINISH
EHRCABNCX	NICKEL
EHRCABNCBX	BLACK CHROME

CUSTOMER DRAWING

					<div>UNLESS OTHERWISE SPECIFIED</div> <div>1. ALL DIMENSIONS IN INCHES</div> <div>- TWO PLACE DECIMALS ±0.02</div> <div>- THREE PLACE DECIMALS ±0.005</div>	THIS DRAWING DESCRIBES A DESIGN CONSIDERED PROPRIETARY IN NATURE, DEVELOPED AND MANUFACTURED BY SWITCHCRAFT INC. AND IS RELEASED ON A CONFIDENTIAL BASIS FOR IDENTIFICATION PURPOSES ONLY.															
						SIZE	WIDTH		MULT		LBS/M		TEMPER								
						FINISH						MATERIAL									
						SPEC No.						SPEC No.									
						FIRST USED ON				SCALE 1.5:1				<div>Switchcraft®</div>							
B	26415	7/17/09	RS	TJK		DATE DRAWN	BY	CHKD		APVD											
A	26104	9/28/06	RF	TJK	8/31/06	RF	8/31/06		8/31/06		SHEET 1 OF 1										
REV	ECO NUMBER	DATE	BY	APVD	NAME						PART No.				REV						
REVISIONS					DO NOT SCALE DRAWING					E SERIES RCA TO BNC, RoHS						EHRCABNC_X SERIES				B	

SolidWorks CAD File

