



# SAW Components

Data Sheet K 2955 M

Data Sheet

A large, stylized, 3D-rendered graphic of the word "EPCOS" in a light gray, sans-serif font. The letters are tilted and appear to be floating or emerging from a dark, textured background that resembles a globe or a complex circuit board. The overall effect is a sense of depth and modernity.



## SAW Components

K 2955 M

## IF Filter for Intercarrier Applications

38,90 MHz

### Data Sheet

#### Standard

- B/G
- D/K

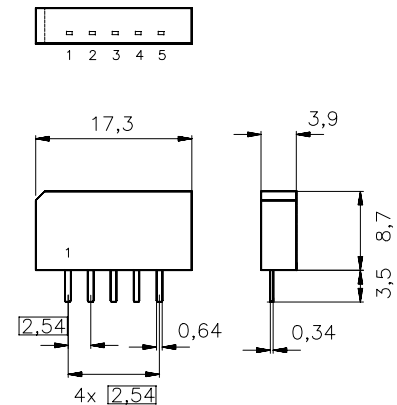
Plastic package **SIP5K**

#### Features

- TV IF filter with Nyquist slope and sound shelf
- Broad sound shelf for sound carriers at 32,40 MHz and 33,40 MHz
- Group delay predistortion

#### Terminals

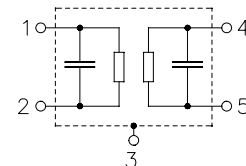
- Tinned CuFe alloy



Dimensions in mm, approx. weight 1,0 g

#### Pin configuration

- |   |                       |
|---|-----------------------|
| 1 | Input                 |
| 2 | Input - ground        |
| 3 | Chip carrier - ground |
| 4 | Output                |
| 5 | Output                |



Type	Ordering code	Marking and package according to	Packing according to
K 2955 M	B39389-K2955-M100	C61157-A1-A15	F61074-V8067-Z000

#### Maximum ratings

Operable temperature range	$T_A$	-25/+65	°C	
Storage temperature range	$T_{stg}$	-40/+85	°C	
DC voltage	$V_{DC}$	12	V	between any terminals
AC voltage	$V_{pp}$	10	V	between any terminals



<b>SAW Components</b>	<b>K 2955 M</b>
<b>IF Filter for Inter-carrier Applications</b>	<b>38,90 MHz</b>

## Data Sheet

### Characteristics

Reference temperature:	$T_A = 25\text{ °C}$
Terminating source impedance:	$Z_S = 50\text{ }\Omega$
Terminating load impedance:	$Z_L = 2\text{ k}\Omega \parallel 3\text{ pF}$

		min.	typ.	max.	
<b>Insertion attenuation</b>	$\alpha$				
Reference level for the following data	37,40 MHz	15,7	17,2	18,7	dB
<b>Relative attenuation</b>	$\alpha_{rel}$				
Picture carrier	38,90 MHz	4,7	5,7	6,7	dB
Color carrier	34,47 MHz	2,6	3,6	4,6	dB
Sound carrier	32,40 MHz	18,5	20,0	21,5	dB
	33,40 MHz	19,4	20,4	—	dB
Adjacent picture carrier	30,90 MHz	48,0	66,0	—	dB
Adjacent sound carrier	40,40 MHz	43,0	58,0	—	dB
	41,40 MHz	42,0	53,0	—	dB
Lower sidelobe	25,00 ... 30,90 MHz	43,0	52,0	—	dB
Upper sidelobe	40,40 ... 45,00 MHz	38,0	44,0	—	dB
<b>Reflected wave signal suppression</b>					
1,2 $\mu$ s ... 6,0 $\mu$ s after main pulse (test pulse 250 ns, carrier frequency 37,40 MHz)		42,0	54,0	—	dB
<b>Feedthrough signal suppression</b>					
1,2 $\mu$ s ... 1,1 $\mu$ s before main pulse (test pulse 250 ns, carrier frequency 37,40 MHz)		50,0	56,0	—	dB
<b>Group delay predistortion</b>	$\Delta\tau$				
(reference frequency 38,90 MHz)					
	36,50 MHz	—	-65	—	ns
	34,47 MHz	—	0	—	ns
<b>Impedance</b> at 37,40 MHz					
Input: $Z_{IN} = R_{IN} \parallel C_{IN}$		—	2,2 $\parallel$ 10,7	—	k $\Omega$ $\parallel$ pF
Output: $Z_{OUT} = R_{OUT} \parallel C_{OUT}$		—	3,1 $\parallel$ 2,8	—	k $\Omega$ $\parallel$ pF
<b>Temperature coefficient of frequency</b>	$TC_f$	—	-72	—	ppm/K



SAW Components

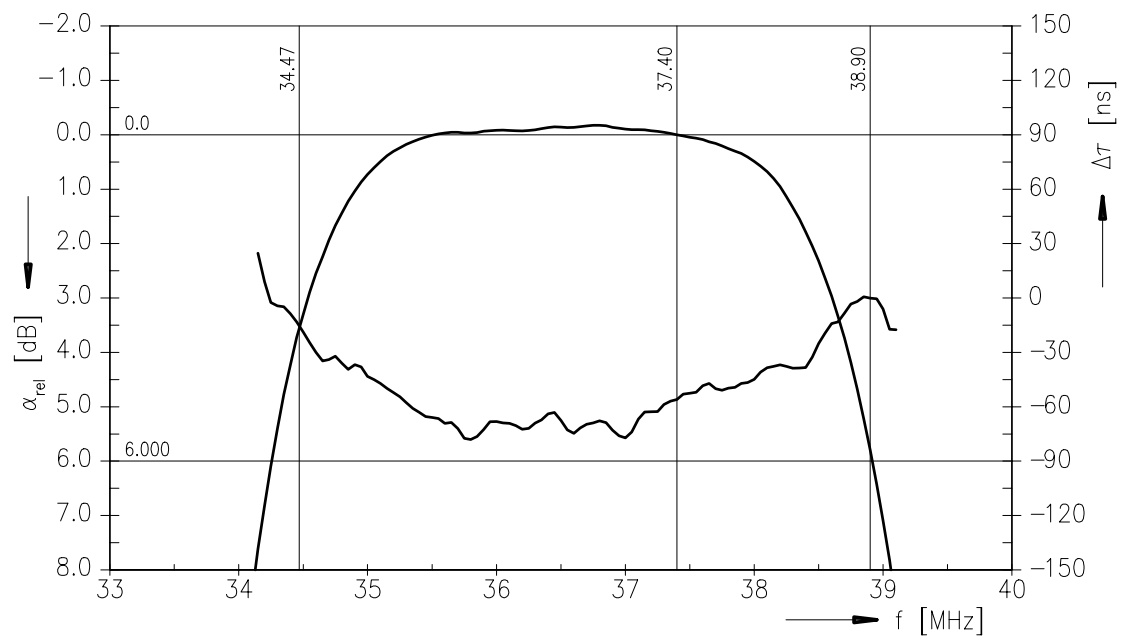
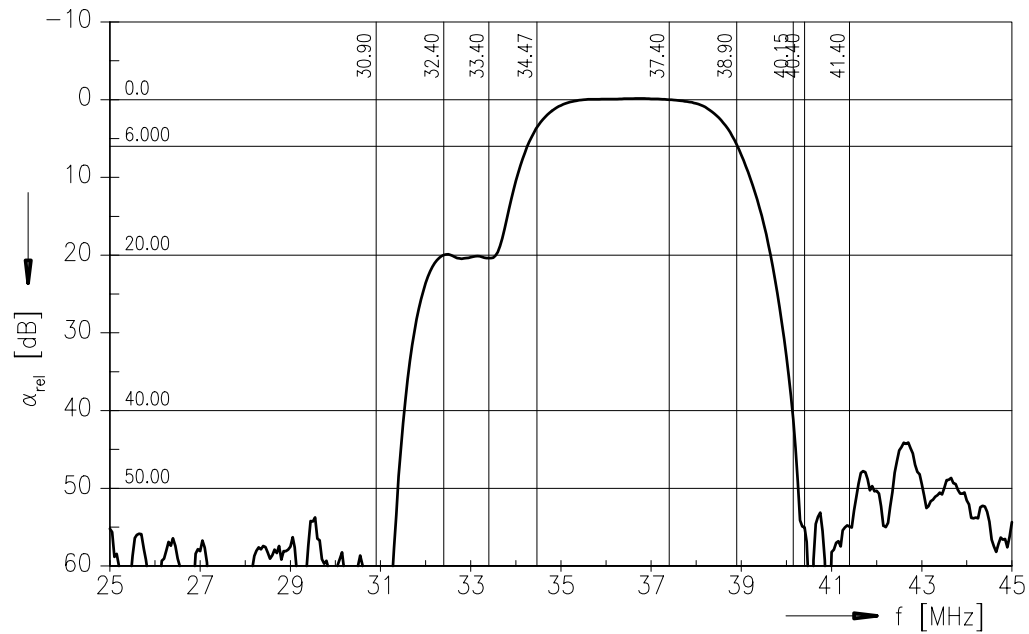
K 2955 M

IF Filter for Intercarrier Applications

38,90 MHz

Data Sheet

Frequency response





SAW Components

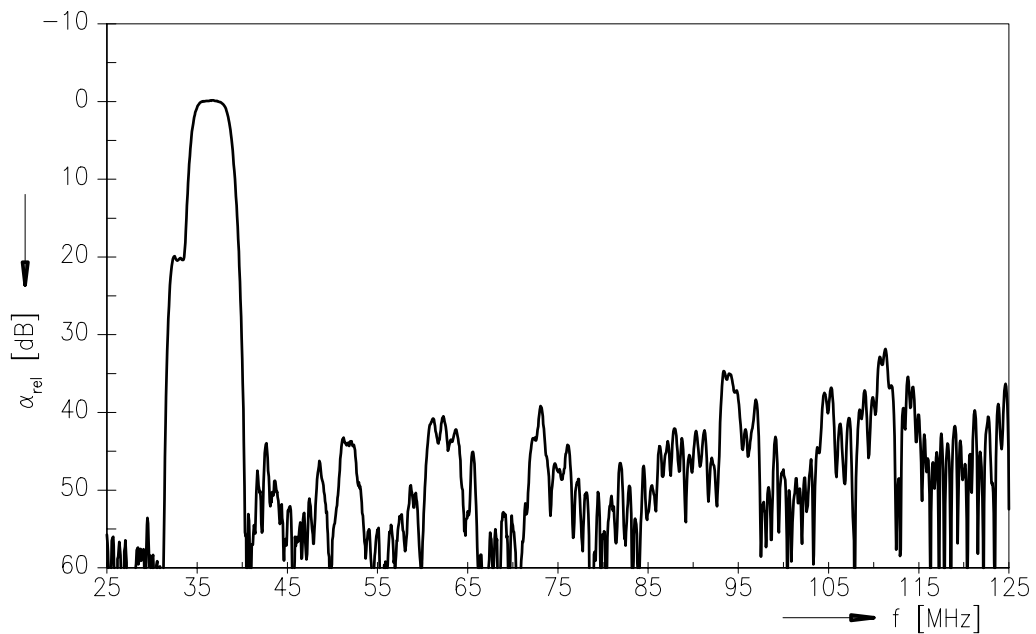
K 2955 M

IF Filter for Intercarrier Applications

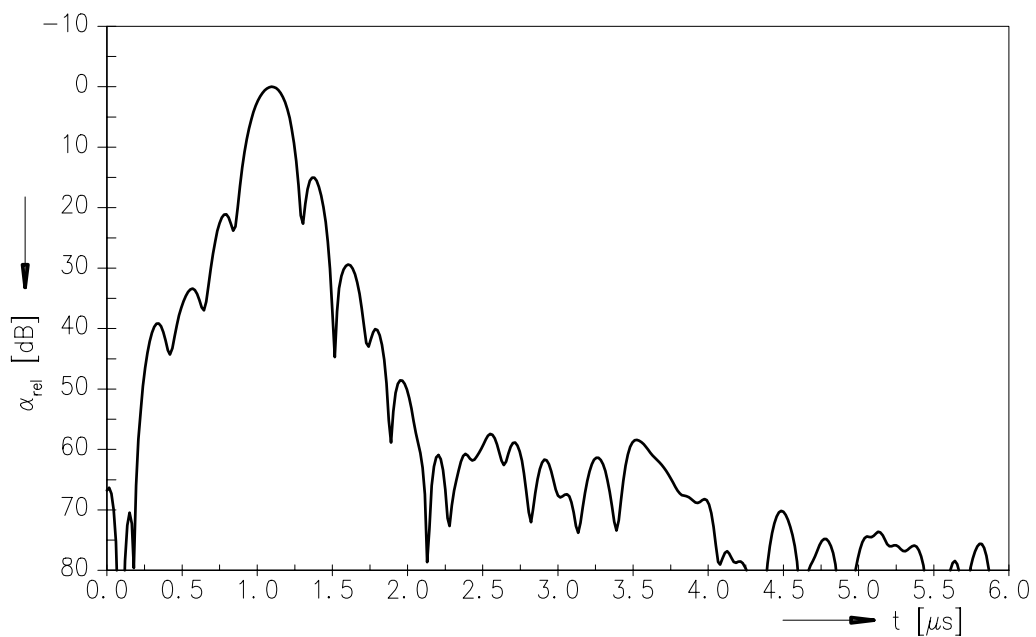
38,90 MHz

## Data Sheet

### Frequency response



### Time domain response





<b>SAW Components</b>	<b>K 2955 M</b>
<b>IF Filter for Intercarrier Applications</b>	<b>38,90 MHz</b>

## Data Sheet

### **Published by EPCOS AG**

**Surface Acoustic Wave Components Division, SAW CE MM PD**

**P.O. Box 80 17 09, D-81617 München**

© EPCOS AG 2001. All Rights Reserved.

As far as patents or other rights of third parties are concerned, liability is only assumed for components per se, not for applications, processes and circuits implemented within components or assemblies.

The information describes the type of component and shall not be considered as assured characteristics.

Terms of delivery and rights to change design reserved.

For questions on technology, prices and delivery please contact the sales offices of EPCOS AG or the international representatives.

Due to technical requirements components may contain dangerous substances. For information on the type in question please also contact one of our sales offices.