

**SERIES**

**SP1210R**  
**SP1210**



**Shielded Surface Mount Power Inductors**

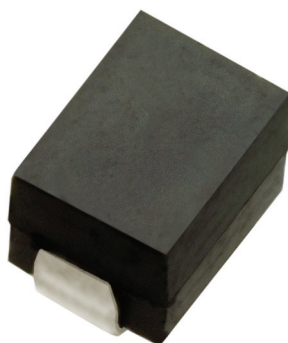
DASH NUMBER\*

INDUCTANCE (μH)  
±10% @100 kHz

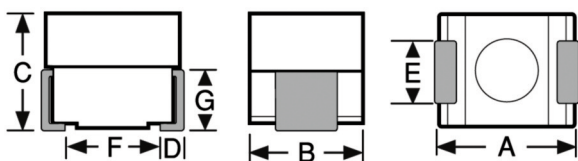
DC RESISTANCE  
MAXIMUM (OHMS)

CURRENT RATING  
MAXIMUM (mA DC)

INCREMENTAL  
CURRENT (mA DC)



Actual Size



**Physical Parameters**

	Inches	Millimeters
A	0.118 to 0.138	3.00 to 3.51
B	0.085 to 0.105	2.16 to 2.66
C	0.081 to 0.101	2.06 to 2.57
D	0.016 Min.	0.41 Min.
E	0.041 to 0.061	1.04 to 1.55
F	0.070 (Ref. Only)	1.78 (Ref. Only)
G	0.054 (Ref. Only)	1.37 (Ref. Only)

Dimensions "A" and "C" are over terminals.

**Operating Temperature Range** -55°C to +125°C

**Current Rating at 90°C Ambient** 35°C Rise

**Maximum Power Dissipation at 90°C** 0.287 W

**Inductance** Measured at 1V with no DC current

**Incremental Current** The current at which the inductance will be decreased by a maximum of 5% from its initial DC value

**Marking** Delevan, dash number followed by an SP, date code/lot (YYWWL). Note: An R before the date code/lot symbol indicates a RoHS component.

Example: SP1210R-102J

DELEVAN  
102 SP  
R1742A

**Packaging** Tape & reel (12mm): 7" reel, 650 pieces max.; 13" reel, 2500 pieces max.

**Coupling** 5% Typical (Ref. M83446, 1mm spacing)

**Made In the U.S.A.**

SERIES SP1210 FERRITE CORE				
-471K	0.470	0.100	1440	1870
-561K	0.560	0.109	1380	1720
-681K	0.680	0.119	1320	1580
-821K	0.820	0.133	1250	1420
-102K	1.00	0.147	1190	1290
-122K	1.20	0.160	1140	1180
-152K	1.5	0.175	1080	1060
-182K	1.80	0.195	1030	965
-222K	2.20	0.211	992	892
-272K	2.70	0.305	826	784
-332K	3.30	0.440	692	718
-392K	3.90	0.470	665	665
-472K	4.70	0.520	633	601
-562K	5.60	0.570	606	550
-682K	6.80	0.630	576	497
-822K	8.20	0.880	487	454
-103K	10.0	0.960	464	410
-123K	12.0	1.3	400	375
-153K	15.0	1.8	338	336
-183K	18.0	2.0	322	304
-223K	22.0	2.2	306	275
-273K	27.0	2.5	291	249
-333K	33.0	3.5	243	225
-393K	39.0	4.6	212	207
-473K	47.0	5.0	203	189
-563K	56.0	5.5	194	174
-683K	68.0	6.1	185	157
-823K	82.0	7.9	162	143
-104K	100	8.7	154	129
-124K	120	9.6	147	118
-154K	150	13.5	124	106
-184K	180	14.7	119	96
-224K	220	20.7	100	87
-274K	270	23.0	95	79
-334K	330	26.8	88	71
-394K	390	32.4	80	65

Optional Tolerances: J = 5% H = 3% G = 2%

\*Complete part # must include series # PLUS the dash #

For surface finish information, refer to [www.delevanfinishes.com](http://www.delevanfinishes.com)