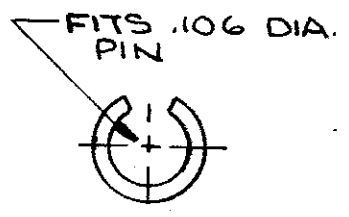
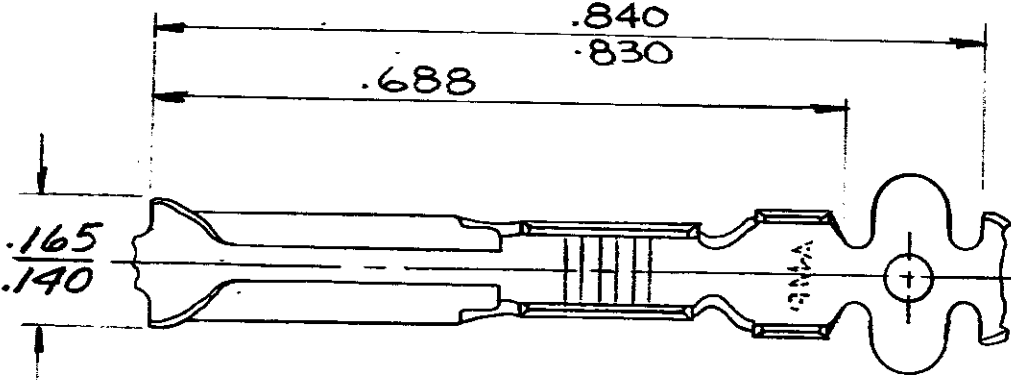
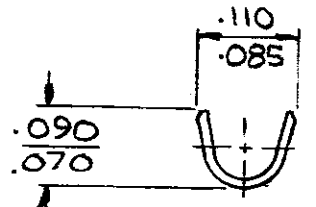
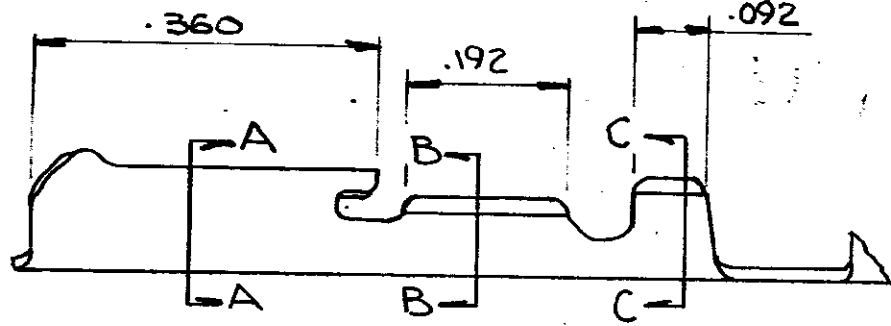


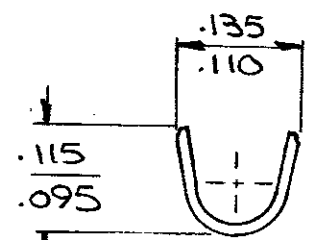
NUMBER
60908



SECT A-A



SECT B-B



SECT C-C

CONTINUOUS STRIP, ON REELS

WIRE SIZE AWG	INSULATION RANGE	PIN DIA. ±.002	MATERIAL AND FINISH	TERMINAL NUMBER
24-20	.075-.100	.106	.012 BRASS-PRE-TIN	60908-1

DIMENSIONS IN INCHES. DO NOT SCALE PRINT.

G	ADDED SEER. A 208L	NA	Key	Pat
F	CHANGED DIST. A-47	LE	Key	9-20-71
E	.165/.140 WAS 5.810	JRK	AET	11/8/69
D	.155 ^{±.010} WAS .165/.145	JRK	HET	10/1/68
C	ADDED 165/145	EXP	WJ	9/1/68
B	RELEASED	CM	SH	12-1-66
A	REVISED A 645	CNI	Rb	12/1/65
	WAS P-28634			

©1965 BY AMP INCORPORATED. ALL RIGHTS RESERVED. AMP PRODUCTS COVERED BY PATENTS AND/OR PATENTS PENDING.

CUSTOMER COPY REFERENCE ONLY

MATERIAL AND FINISH



AMP INCORPORATED
HARRISBURG, PENNA.

WIRE — RANGE — INSULATION

CLASS ————
TYPE ————

LTR	REVISION RECORD	DR	CHK	DATE
	11-1-65	DE		11/2/65
	C. MEYERS			
	PC SWENDEL			

TOLERANCE EXCEPT AS NOTED ± .013	SCALE ± 1° 5-1	LOC AF	NO A	REV G
----------------------------------	----------------	--------	------	-------

NAME .106 DIA. PIN RECEPTACLE