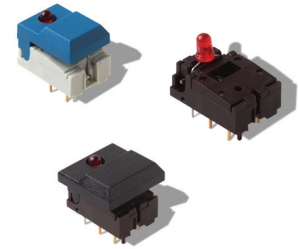


# DIGITAST

## Typical Applications

- **Medical**
- **Instrumentation**
- **Industrial electronics**
- **Audio electronics**



## Electrical

SWITCHING POWER MAX.: 240 mW DC  
SWITCHING VOLTAGE MAX.: 24 V DC  
SWITCHING CURRENT MAX.: 10 mA DC  
CARRYING CURRENT AT 20°C (push-push version): 100 mA  
DIELECTRIC STRENGTH (50 Hz, 1 min): 500 V  
OPERATING LIFE with or without max. switching power  
    Momentary:  $\geq 5 \times 10^5$  operations  
    Push-push:  $\geq 5 \times 10^5$  operations  
CONTACT RESISTANCE: Initial  $\leq 50 \text{ m}\Omega$   
    After  $5 \times 10^6$  operations:  $\leq 100 \text{ m}\Omega$   
INSULATION RESISTANCE:  $\geq 10^{10} \Omega$   
CAPACITANCE at  $f = 10 \text{ kHz}$ :  $\leq 0.8 \text{ pF}$   
BOUNCE TIME:  $\leq 2.5 \text{ ms}$   
    Operating speed 400 mm/s (15.75/s)

## Environmental

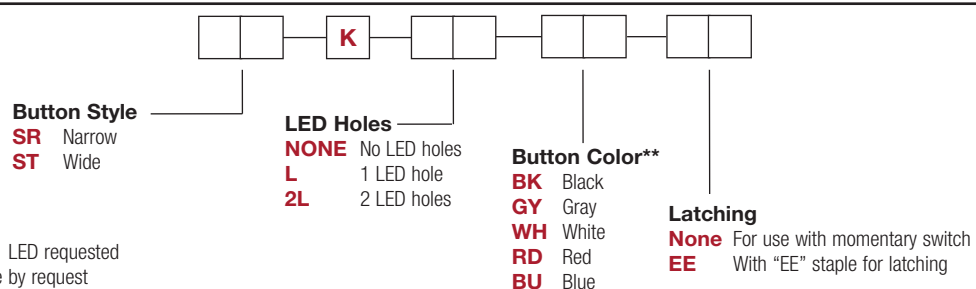
OPERATING TEMPERATURE: -25°C to 85°C.

**SOLDERABILITY:**  
Wave soldering, compatible with lead free soldering profile  
Hand soldering, 350°C for 3 seconds

## Environmental

Our easy build-a-switch concept allows you to mix and match options to create the switch you need. To order, select desired option from each category and place it in the appropriate box. **Some of the configurations may not be available or could require some development.**

OPERATING TEMPERATURE: -25°C to 85°C.

Reference  
SRK BK

\*\* Additional button colors available by request.

**None** For use with momentary switch  
**EE** With "EE" staple for latching

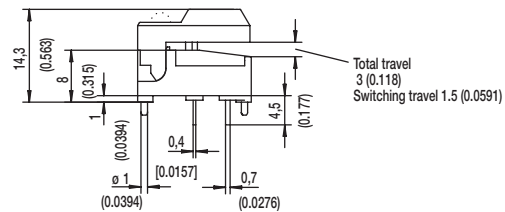
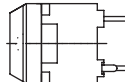
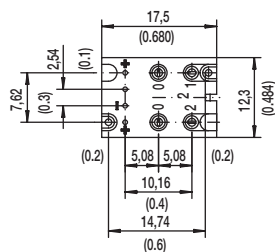
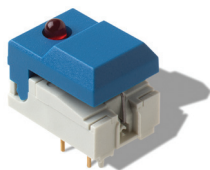
# DIGITAST

## Microminiature SPDT, Key Switches

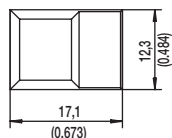
### DESIGNATION



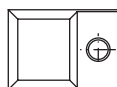
#### SER NARROW BUTTON



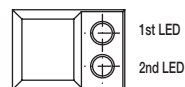
SER



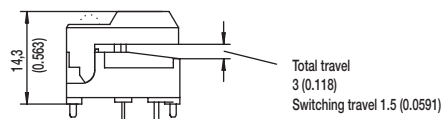
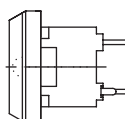
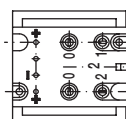
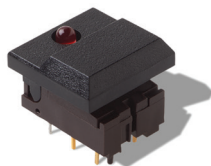
SERL



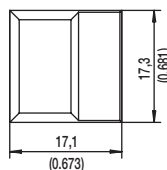
SER2L



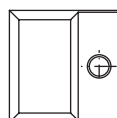
#### SET WIDE BUTTON



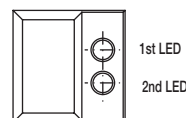
SET



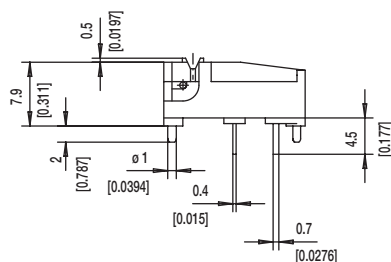
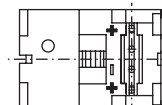
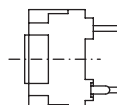
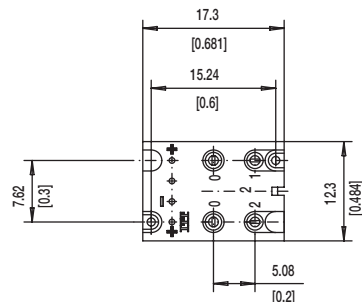
SETL



SET2L



#### SERU NO BUTTON



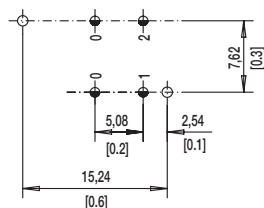
D

Key Switches

# DIGITAST Microminiature SPDT, Key Switches

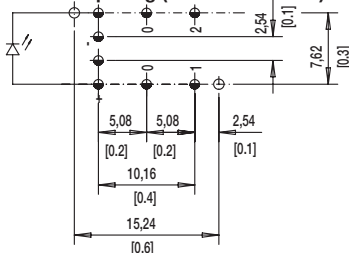
## LED

### NONE NO LED

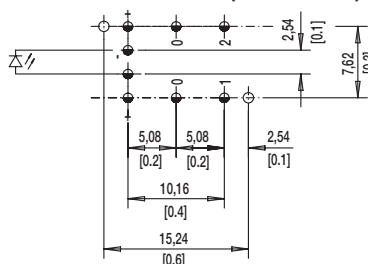


### L 1 LEDS

#### 7.62 mm Spacing (TYP No. America)

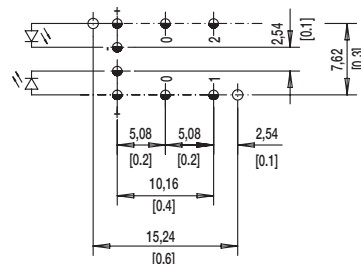


#### NARROW SPACING (TYP EUROPE)



TOP VIEW OF PCB

### 2L 2 LEDS



⌀ 1.0±0.1 (0.0394±0.00349)

⌀ 1.1±0.05 (0.0433±0.00197)

## BUTTON COLOR

**BK** BLACK

**GY** GRAY

Other button colors available by request [red (RD), green (GN), white (WH), yellow (YE), blue (BU), orange (OG)].

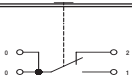
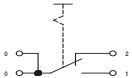
## LED COLOR

OPTION CODE	COLOR
<b>NONE</b>	Models without LED
<b>RD</b>	Red
<b>GN</b>	Green
<b>YE</b>	Yellow

## CONTACT MATERIAL

OPTION CODE	MATERIAL
<b>AU</b>	Gold

## FUNCTION

OPTION CODE	COLOR	SCHEMATIC
<b>OA</b>	Momentary	
<b>EE</b>	Push-Push	



First Angle  
Projection

# Mouser Electronics

Authorized Distributor

Click to View Pricing, Inventory, Delivery & Lifecycle Information:

[C&K Switches:](#)

[SRKL BK](#) [STK2LGY](#) [SRK2LBK](#) [SRK2LGY](#)