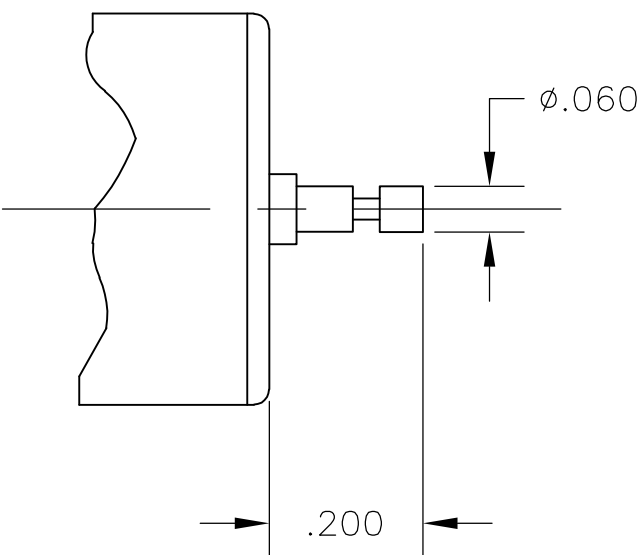



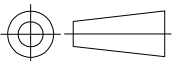
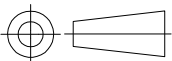
LUG TERMINAL



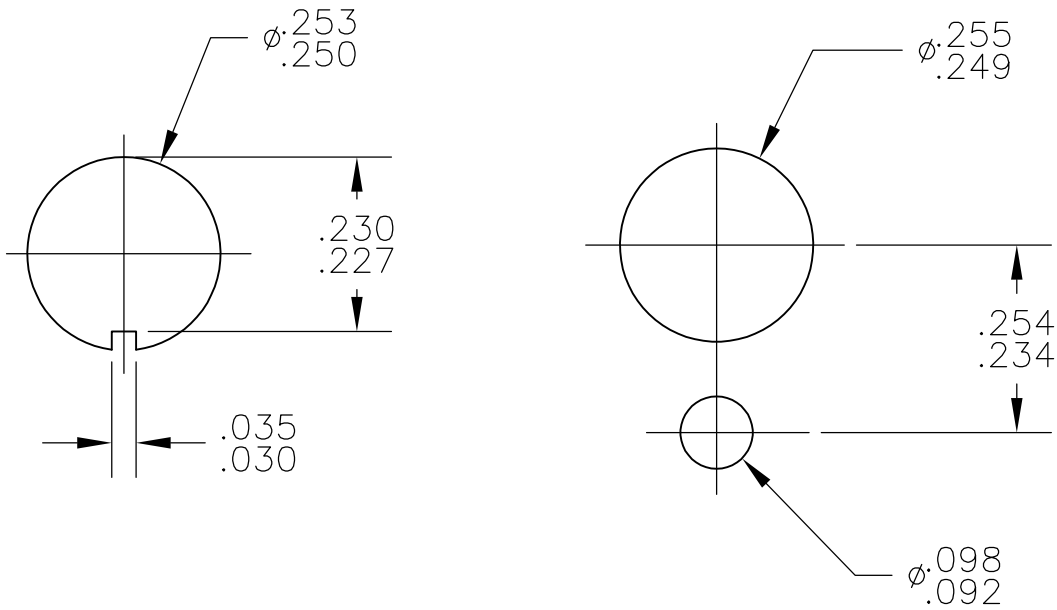
PIN TERMINAL OPTION

- NOTES:
1. TERMINAL NUMBERS ARE FOR REFERENCE ONLY AND DO NOT APPEAR ON SWITCHES.
 2. EACH SWITCH SUPPLIED WITH THE FOLLOWING MOUNTING HARDWARE:
 - (1) DECORATIVE NUT
 - (1) HEX NUT
 - (1) INTERNAL TOOTH LOCKWASHER
 - (1) LOCATING RING
 3. ALL MATERIALS AND FINISHES SHALL COMPLY WITH EU DIRECTIVE 2002/95/EC OF 27JAN2003 (ROHS).
 4. LUG TERMINALS ACCEPT STANDARD .110 QUICK CONNECT RECEPTACLES. PIN TERMINALS USEABLE FOR PCB APPLICATIONS.

LUG	RED	NORMALLY OPEN	1	1	MSPM101CS104	1825539-4
PIN	RED	NORMALLY OPEN	1	1	MSPM101CS04	1825539-3
LUG	BLACK	NORMALLY CLOSED	1	1	MSPM101BS104	1825539-2
PIN	BLACK	NORMALLY CLOSED	1	1	MSPM101BS04	1825539-1
TERMINAL STYLE	CAP COLOR	ACTION	THROWS	POLES	ALCO P/N	P/N

THIS DRAWING IS A CONTROLLED DOCUMENT.		DWN M.M.	14OCT92	 TE Connectivity					
DIMENSIONS: INCHES		CHK RAY.D	15OCT92						
		TOLERANCES UNLESS OTHERWISE SPECIFIED:		NAME					
		0 PLC ± -		APVD J.JORDAN					
		1 PLC ± -		PRODUCT SPEC					
		2 PLC ± -		APPLICATION SPEC					
		3 PLC ± .010		SIZE					
		4 PLC ± -		CAGE CODE					
MATERIAL SEE SPECIFICATIONS		FINISH SEE SPECIFICATIONS		WEIGHT -		A2	00779	DRAWING NO C-1825539	RESTRICTED TO -
CUSTOMER DRAWING				SCALE 4:1	SHEET 1 OF 2	REV A2			

LOC	DIST	REVISIONS					
AD	00	P	LTR	DESCRIPTION	DATE	DWN	APVD
			—	SEE SHEET 1	—	—	—



RECOMMENDED HOLE LAYOUT
TO PREVENT ROTATION

MATERIALS		
COMPONENT NAME	BASE MATERIAL	FINISH
CASE	STEEL	
ACTUATOR BUTTON	POLYAMIDE, SEE CHART FOR COLOR	
MOVING CONTACT	COPPER ALLOY	GOLD OVER NICKEL
FIXED CONTACT	COPPER ALLOY	GOLD OVER NICKEL
TERMINALS	COPPER ALLOY	TIN OVER NICKEL

SPECIFICATIONS	
RATING	1.0VA OPTIMUM (100mA MAX., 50 VDC MAX.)
INITIAL CONTACT RESISTANCE	100 MILLIOHMS
INSULATION RESISTANCE	1000 MEGOHMS MIN.
DIELECTRIC WITHSTANDING VOLTAGE	1000 VRMS AT SEA LEVEL
DURABILITY	5000000 CYCLES AT .1VA
	50000 CYCLES AT 5VA
OPERATING FORCE	TACTILE KEYBOARD FEEL 4 TO 7 OZ. BREAKAWAY REDUCING IMMEDIATELY TO 1.5 OZ. FOLLOW-THROUGH
TRAVEL	.079 +/- .008
OPERATING TEMPERATURE	-10C TO +80C
STORAGE TEMPERATURE	-10C TO +80C

THIS DRAWING IS A CONTROLLED DOCUMENT.

DWN

M.M.

14OCT92

CHK

RAY.D

15OCT92

APVD

J.JORDAN

19OCT92

DIMENSIONS:

INCHES

TOLERANCES UNLESS OTHERWISE SPECIFIED:

0 PLC ± -

1 PLC ± -

2 PLC ± -

3 PLC ± .010

4 PLC ± -

ANGLES ± 1°

MATERIAL

SEE SPECIFICATIONS

FINISH

SEE SPECIFICATIONS

PRODUCT SPEC

APPLICATION SPEC

WEIGHT

-

SIZE

A2

CAGE CODE

00779

DRAWING NO

C=1825539

RESTRICTED TO

-

TE Connectivity

PUSH BUTTON SWITCH, MAGNETIC REED, HERMETICALLY SEALED, AUDIBLE DETENT

SCALE

4:1

SHEET

2 of 2

REV

A2

Mouser Electronics

Authorized Distributor

Click to View Pricing, Inventory, Delivery & Lifecycle Information:

[TE Connectivity:](#)

[1825539-4](#) [1825539-1](#)