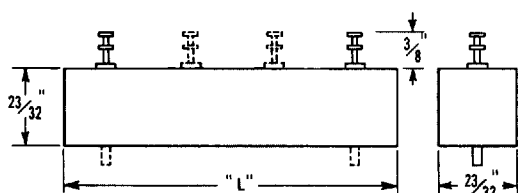
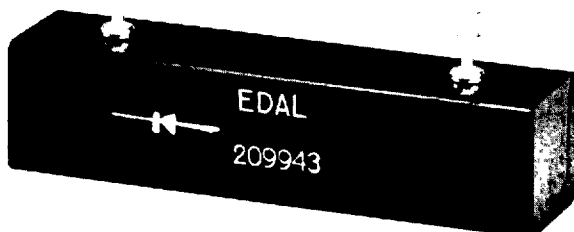




# HIGH VOLTAGE MULTIPLE CIRCUIT SILICON PACKAGES

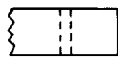


"L" is equal to 1/8 inch per KV plus 1 1/2" for half wave circuit.

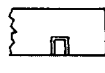
## MOUNTING OPTIONS



6 32  
1/2 STUD



CLEARANCE  
FOR #6 SCREW



6 32 1/4  
THREADED INSERT

## ELECTRICAL RATINGS

**Maximum Allowable DC Output Current:**  
 at 25°C ambient temperature, 6.0 amps  
 at 100°C ambient temperature, 3.0 amps  
 at 150°C ambient temperature, 1.0 amps

**Maximum Allowable One Cycle Surge Current:**  
 (60 cps single phase non-recurrent,  
 at rated PRV and no load) 250 amps

**Maximum Full Load Forward Voltage Drop**  
 (150°C full cycle average  
 per KV per leg) .6 volt

**Maximum Reverse Current**  
 (150°C full cycle average) 5 mA

**Maximum Storage and Operating Temperature** 175°C

■ Edal's multi-unit package offers many optional configurations in one standard modular design. A sharp reduction in space requirements, simplified purchasing, reduced inventory, fewer lead connections and faster assembly by eliminating the need of soldering many diodes to achieve equivalent circuitry are substantial advantages. Each modular package consists of matched, pre-tested, pre-selected, double diffused bulk avalanche rectifiers offering self-protection against voltage transients. Low unit cost and increased reliability are proven results of Edal multiple circuits, now available in full wave, half wave, doubler, center tap, open bridge and three phase types.

Ratings highlighted below point out the high temperature resistance, low leakage current and low forward voltage drop. The cold case design and a thorough quality control program result in high unit reliability. Standard types in voltage ratings from 1500 to 30,000 volts PIV. Currents range from 20 mA to 6 amps. Also available in fast recovery.

CURRENT (TENS OF mA)	DESIGNA- TION	PIV (HUNDREDS OF VOLTS)	CODE	CIRCUIT	CODE	MOUNTING
20 mA to 6 amps	N	1500 to 30,000 volts	B	single phase bridge	S	stud
			C	single phase center tap, positive	H	holes
			D	doubler	I	threaded inserts
			H	single phase half wave		
			J	3 phase, half wave, positive		
			K	3 phase, half wave, negative		
			L	3 phase, bridge		
			M	3 phase, center tap		
			N	single phase, center tap, negative		
			U	open bridge, positive		

## 25 N 15 B S

First number represents current in tens of milliamps, second is series designation, third PIV in hundreds of volts, fourth code designation for circuit, fifth code for mounting desired. 25 N 15 B S, for example, signifies 250 mA, Series N, 1500 volts PIV, single phase bridge circuit, stud mounting.

**EDAL INDUSTRIES, INC.**  
**4 SHORT BEACH ROAD • EAST HAVEN, CONN. 06512**

Phone: (203) 467-2591. FAX: (203) 469-5928.