



FTH
Snap In Cable Tie Mounts

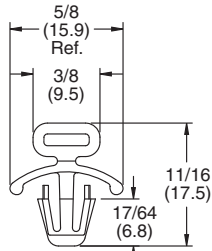
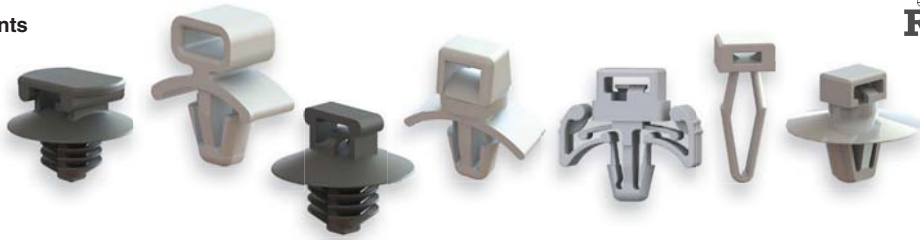


Figure 1

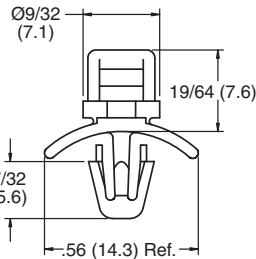


Figure 2

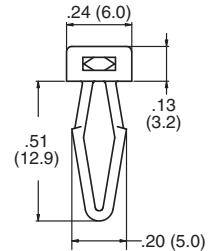


Figure 3

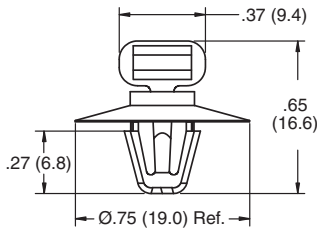


Figure 4

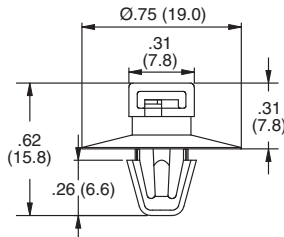


Figure 5

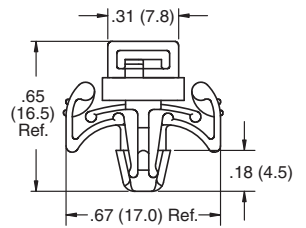


Figure 6

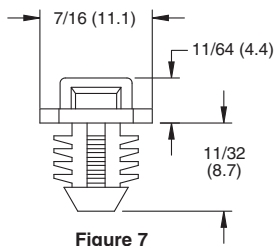


Figure 7

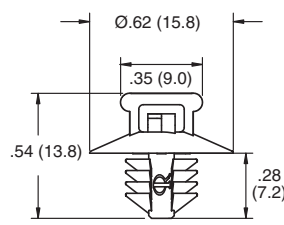


Figure 8

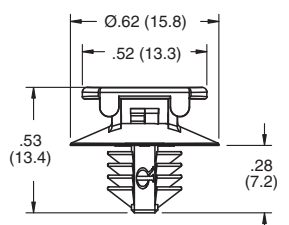


Figure 9

Specifications:

- Material: UL94 V-2 Nylon 6/6
- Color: See Table

Features:

- Requires no adhesive or other mounting hardware
- Can be used in applications where back of panel is not accessible
- Figures 5,6,8, and 9 have pressure-hold feature that holds cable tie inside the tie holder
- Figures 4,5,8, and 9 have a cupped base that provides stability and also covers the mounting hole

Item No.		Mounting Hole Ø			Panel Thickness			Used with Cable Ties	Bulk Pack Qty.
Natural	Black	Approval	Figure	In	mm	In	mm		
FTH-6-01-M	—	RU	1	0.250	6.4	0.047 - 0.109	1.2 - 2.8	18 - 50 lbs	1000
FTH-6-01-C	—	RU	1	0.250	6.4	0.047 - 0.109	1.2 - 2.8	18 - 50 lbs	100
FTH-3-01-M	—	RU	2	0.187	4.8	0.031 - 0.078	0.8 - 2.0	18 - 50 lbs	1000
FTH-3-01-C	—	RU	2	0.187	4.8	0.031 - 0.078	0.8 - 2.0	18 - 50 lbs	100
FTH-39-1-01	—	—	3	0.126	3.2	0.039 - 0.177	1.0 - 4.5	18 lbs	1000
FTH-29-01	—	—	4	0.250	6.4	0.062	1.6	18 - 50 lbs	1000
FTH-33-01	—	—	5	0.250	6.4	0.062	1.6	40 - 50 lbs	1000
FTH-41-01	—	—	6	0.187	4.8	0.020 - 0.090	0.5 - 2.3	18 - 50 lbs	1000
FTH-15-01-M	—	—	7	0.312	7.8	0.250	6.4	18 - 40 lbs	1000
FTH-15-01-C	—	RU	7	0.312	7.8	0.250	6.4	18 - 40 lbs	100
—	FTH-36-01BK	—	8	0.260 - 0.280	6.5 - 7.0	0.030 - 0.120	0.8 - 3.0	40 - 50 lbs	1000
—	FTH-37-01BK	—	9	0.260 - 0.280	6.5 - 7.0	0.030 - 0.120	0.8 - 3.0	40 - 50 lbs	1000

FTH-22
Rivet Mount Cable Tie Mount

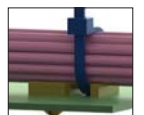
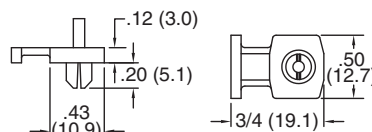


Specifications:

- Material: UL94 V-2 Nylon 6/6
- Color: Yellow

Features:

- Rivet designed into part expands to lock the tie holder in place
- Low profile design for where space is limited



Item No.	Mounting Hole Ø		Panel Thickness		Used with Cable Ties	Bulk Pack Qty.
	In	mm	In	mm		
FTH-22-01	0.196	5.0	0.030 - 0.125	0.8 - 3.2	18 - 50 lbs	1000