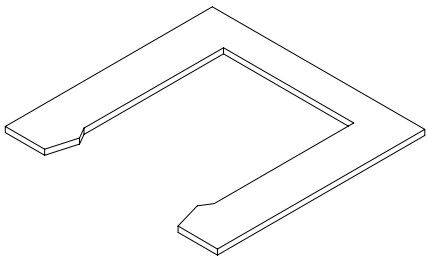
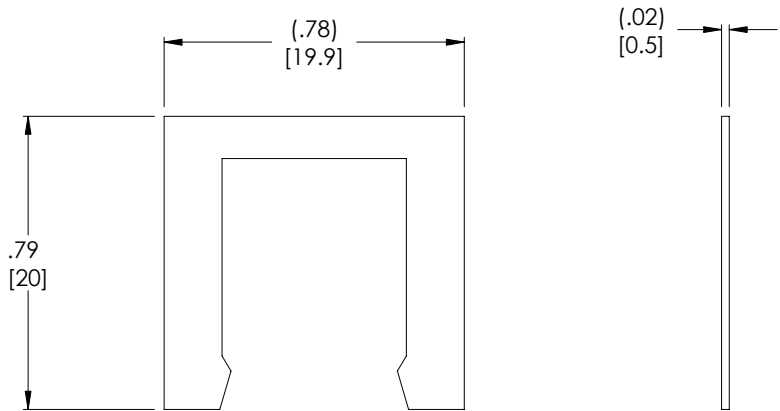


THE INFORMATION CONTAINED IN THIS DRAWING IS THE SOLE PROPERTY OF L-COM, INC. ANY REPRODUCTION IN PART OR WHOLE WITHOUT THE WRITTEN PERMISSION OF L-COM, INC. IS PROHIBITED.

REVISIONS			
REV	DESCRIPTION	DATE	APPROVED
A	RELEASED FOR PRODUCTION	10/12/01	TJC
.	.	.	.
.	.	.	.
.	.	.	.



NOTES:

1. RETAINER RECOMMENDED FOR PANEL MOUNTING L-COM MODULAR COUPLERS TDG1026A-4C AND TDG1026A-6C.
2. MATERIAL: MILD STEEL
FINISH: NICKEL PLATED

UNLESS OTHERWISE SPECIFIED,
DIMENSIONS ARE IN INCHES
TOLERANCES ARE:
.X ±.1
.XX ±.05
.XXX ±.005
CABLE LENGTH TOLERANCE
<300' ±5% >300' ±2%

APPROVALS	DATE
DRAWN	
TJC	10/12/01
CHECKED	
DFF.	10/12/01
APPROVED BY	
CM	10/12/01

CONFIGURATION DETAILS OF
UNDIMENSIONED FEATURES
MAY VARY

L-com CONNECTIVITY PRODUCTS		45 BEECHWOOD DRIVE NORTH ANDOVER, MA 01845	
PRODUCT DESCRIPTION		MODULAR COUPLER RETAINER	
DRAWING TITLE		OUTLINE DRAWING	
SIZE	FSCM NO.	DWG. NO.	REV.
A	43321	TDG1026A-6CBK-OD1	A
SCALE	CAD FILE:	SHEET 1 OF 1	
1:1	TDG1026A-6CBK-OD1.SLDDRW		